

OREGON CORNER RESTORATION FORM

23039

SECTION 2

TOWNSHIP 35 S.

RANGE 3 W

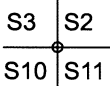
COUNTY JACKSON

DATE 2/19/2020

TRACT SARDINE CREEK

CORNER DESIGNATION:

T35S R3W



POINT IDENTIFIER 500600

- CONDITION REPORT ONLY
- NOT FOUND
- RENEWED
- UNRECORDED
- SURVEYED IN
- REFERENCED OUT

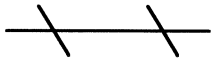
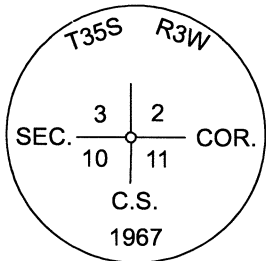
PREVIOUS RENEWALS/SURVEYS, ETC.:

SET IN 1967 IN FIRST-REESTABLISHMENT GCDB 500600 FILED IN JACKSON COUNTY SURVEYORS OFFICE.

ACCESSORIES FOUND: (CONDITION AND SOURCE)

22" PINE IS DOWN AND UPROOTED RECORD N41°W 10.6 DID NOT MEASURE BT TAG ON TREE
 16" BLACK OAK 10 FT. TALL ROTTING STUB WITH ONE LIVE STEM BEARS N73 1/2°E 57.2 FT. TO FACE OF UPPER BLAZE FIND BT TAG ON GROUND AND REATTACH TO LIVE STEM
 RECORD 16" BLACK OAK IS DOWN AND UPROOTED RECORD S73 3/4°E 61.3 FT. DID NOT MEASURE
 RECORD 28" OAK ROTTEN REMAINS BEARS S83°W 40.0 FT. AS PER RECORD
 26" PINE STUMP BEARS N47 1/2°E 70.9 FT TO MID STUMP (RECORD N47 1/2°E 70.1 FT. TO FACE OF UPPER BLAZE) BT TAG NAILED TO TOP OF STUMP AND METAL FENCE POST ON SOUTH SIDE OF STUMP.

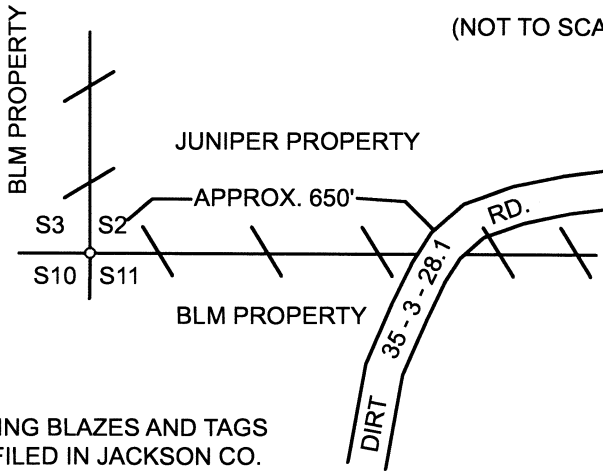
MONUMENT DETAIL:



PROPERTY LINES REBLAZED FROM EXISTING BLAZES AND TAGS BY McMAHAN PLS 1913, 1997 MAP #15466 FILED IN JACKSON CO. SURVEYORS OFFICE.

SKETCH:

(NOT TO SCALE)



MONUMENT:

FOUND 1967 COUNTY CAP PER GCDB 500600 FIRST RE-ESTABLISHMENT FILED JACKSON COUNTY SURVEYORS OFFICE.

NEW ACCESSORIES:

10" DOUG FIR BEARS N5°W 45.55 FT. WE SCRIBED S3 BT AND TAG TREE
 7" DOUG FIR BEARS S42°E 20.1 FT. WE SCRIBE S11 BT AND TAG TREE
 8" DOUG FIR BEARS S77°W 27.8 FT. WE SCRIBE S10 BT AND TAG TREE

LOCATION & COMMENTS:

MONUMENT IS APPROX. 0.9 FT, ABOVE GROUND LEVEL ON SOUTHEAST FACING SLOPE. NEWLY REBLAZE PROPERTY LINES RUN EAST AND NORTH OF CORNER. PUT METAL U-POST APPROX. 1.0 FT. NORTH OF CORNER. MONUMENT.

BEARING BASIS: MAGNETIC COMPASS

BEARING (16° DECLINATION)

FIRM/AGENCY: LONE ROCK TIMBER MANAGEMENT CO.

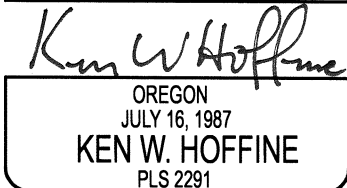
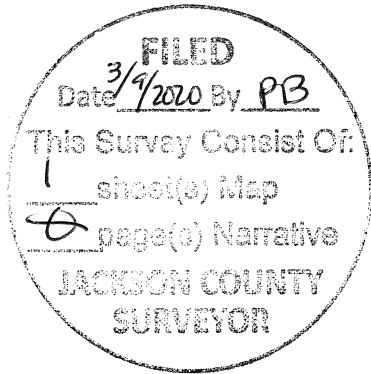
ADDRESS: P.O. BOX 1127

ROSEBURG, OR 97470

PARTY CHIEF: KEN W. HOFFINE

NOTES: GARY ANGIOLET

WITNESS: IGNACIO ROMAN



EXPIRES 6-30-21