

# OREGON CORNER RESTORATION FORM

23038

SECTION 2

TOWNSHIP 35 S.

RANGE 3 W.

COUNTY JACKSON

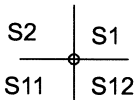
DATE 2/19/2020

TRACT SARDINE CREEK

POINT IDENTIFIER 600600

### CORNER DESIGNATION:

T35S R3W



- CONDITION REPORT ONLY
- NOT FOUND
- RENEWED
- UNRECORDED
- SURVEYED IN
- REFERENCED OUT

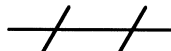
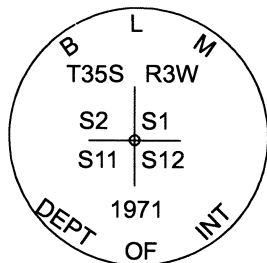
### PREVIOUS RENEWALS/SURVEYS, ETC:

BLM FIELD NOTES PAGES 273 AND 274

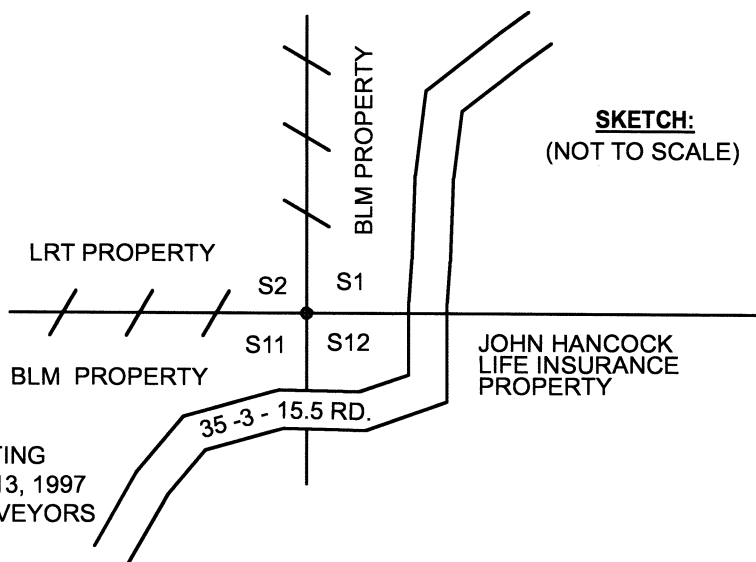
### ACCESSORIES FOUND: (CONDITION AND SOURCE)

16" BLACK OAK WITH ROTTEN TOP BEARS N47°E 11.9 FT. AS PER BLM RECORD BT TAG AND VERY WELL HEALED FACE  
37" FIR SNAG BEARS N41°E 54.1 FT. AS PER BLM RECORD HEALED FACE WE TAG TREE  
RECORD 5" BLACK OAK 7' TALL STUB BEARS S70°E 44.2 FT. AS PER BLM RECORD EXISTING BT TAG  
11" BLACK OAK BEARS S2°W 39.9 FT. AS PER BLM RECORD HEALED FACE AND EXISTING BT TAG  
RECORD 24" ROTTEN PINE STUB BEARS N64°W 56.1 FT. AS PER BLM RECORD NO MARKS OR TAG.

### MONUMENT DETAIL:



PROPERTY LINE REBLAZED FROM EXISTING  
 BLAZES AND TAGS BY McMAHAN PLS 1913, 1997  
 MAP #15466 FILED IN JACKSON CO. SURVEYORS  
 OFFICE.



### MONUMENT:

FOUND 1971 BLM BCIP PER BLM FIELD NOTES FILED IN JACKSON COUNTY SURVEYORS OFFICE

### NEW ACCESSORIES:

9" DOUG FIR BEARS S83°E 23.2 FT. WE SCRIBE S12 BT AND TAG TREE  
7" DOUG FIR BEARS N61°W 19.2 FT. WE SCRIBE S2 BT AND TAG TREE

### LOCATION & COMMENTS:

FOUND BLM BCIP IN MOUND OF STONES APPROX. 1.5'  
X 1.5', AND IS APPROX. 125' WEST OF GRAVEL ROAD  
35-3-15.5. PUT METAL U-POST APPROX. 1.5' WEST OF  
CORNER MONUMENT.

BEARING BASIS: MAGNETIC COMPASS

BEARING (16° DECLINATION)

FIRM/AGENCY: LONE ROCK TIMBER MANAGEMENT CO.

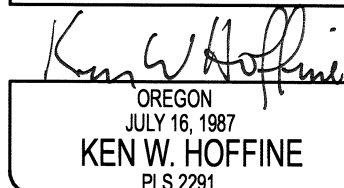
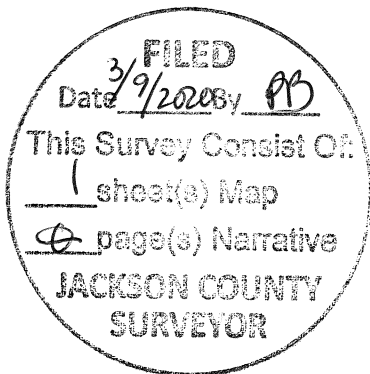
ADDRESS: P.O. BOX 1127

ROSEBURG, OR 97470

PARTY CHIEF: KEN W. HOFFINE

NOTES: GARY ANGIOLET

WITNESS: IGNACIO ROMAN



EXPIRES 6-30-21