

MAP OF SURVEY

In Lots 29-31, CLEARVIEW OF TALENT, PHASE XI
In the S.E. 1/4 of Sec. 23, T38S., R.1W., W.M. and in the
City of Talent Jackson County, Oregon

SURVEY FOR:

Clearview Residential
Development, LLC
100 East Main St., Suite C
MEDFORD, OR 97501

SURVEY BY:

L.J. Friar & Associates, P.C.
Consulting Land Surveyors
P.O. Box 1947
Phoenix, Oregon 97535
Phone: (541) 772-2782
ljfriarandassociates@charter.net

DATE:

September 24, 2019

LEGEND:

- = FD. 5/8" IRON PIN & PLASTIC CAP MKD. L.J. FRIAR & ASSOC. PER CT11/12.
- ⦿ = FD. 5/8" IRON PIN & PLASTIC CAP MKD. KAMPMANN PLS2883 PER CT1 OR CT2.
- ⊗ = FD. MAG NAIL & BRASS TAG MKD. PLS2883 IN CONCRETE PER CT1 OR CT2.
- ⊗ = SET MAG NAIL & BRASS TAG MKD. FRIAR & ASSOC. IN CONCRETE.

- FS = FILED SURVEY #.
- L1/C1 = SEE COURSE DATA TABLE.
- CT1 = CLEARVIEW OF TALENT, PHASE I (FS20601).
- CT11/12 = CLEARVIEW OF TALENT, PHASES XI & XII (FS21975).
- CP () = COMMON PROPERTY PER CT1.
- CT2 = CLEARVIEW OF TALENT, PHASE II (FS21039).

BASIS OF BEARINGS:

CLEARVIEW OF TALENT, PHASES XI & XII OFFICIAL PLAT AS SHOWN HEREON.

UNIT OF MEASUREMENT = FEET SCALE: 1" = 30'

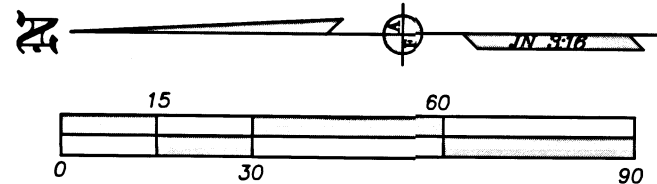
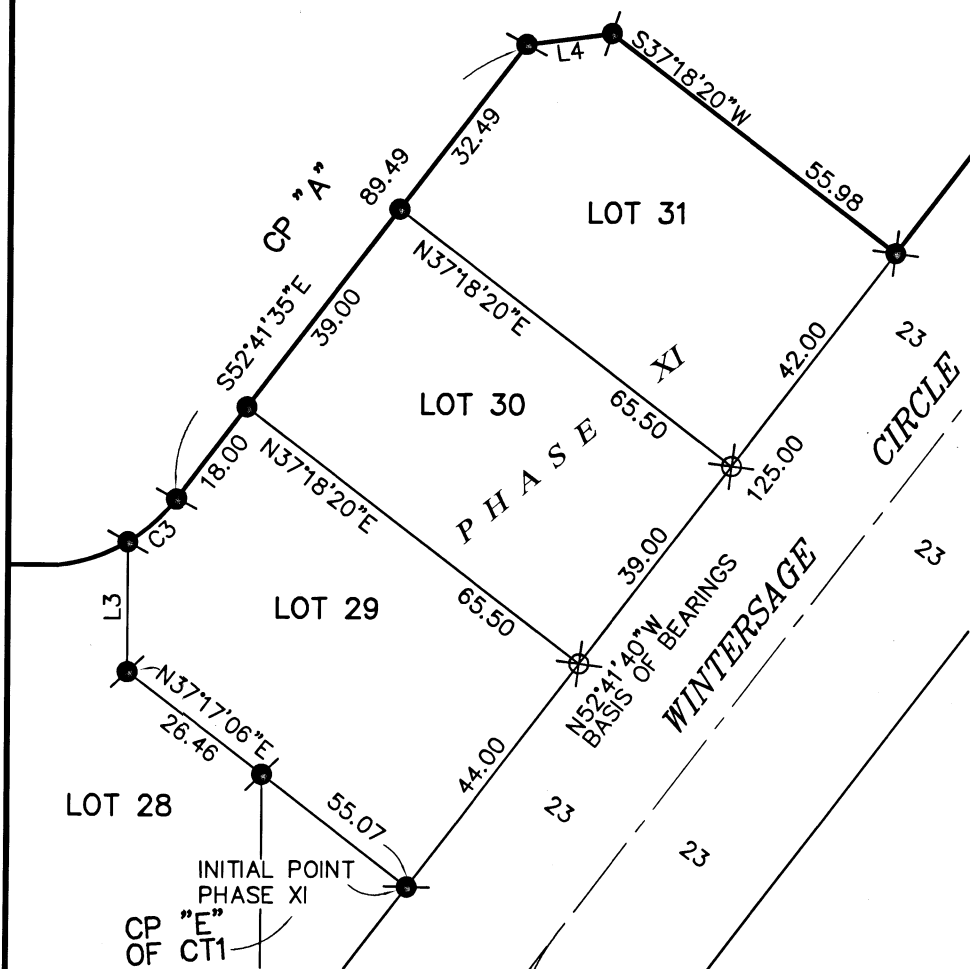
SURVEY NARRATIVE TO COMPLY WITH O.R.S. 209.250

PURPOSE: To set lot corner monuments destroyed by recent residential construction in Lots 29-31 of CLEARVIEW OF TALENT, PHASE XI.

PROCEDURE: The destroyed monuments were initially set by this office during PHASE XI. I reset the destroyed monuments at plat record position as shown hereon using Trimble R8 G.P.S receivers.

COURSE DATA TABLE

NUM	DELTA	ARC	RADIUS	CHORD
C3	21°31'48"	10.14	26.99	S41°55'41"E 10.08
NUM	BEARING	DISTANCE		
L3	N89°55'53"E	20.28		
L4	S07°41'40"E	13.45		



REGISTERED PROFESSIONAL LAND SURVEYOR

J. Friar
OREGON
JULY 17, 1986
JAMES E. HIBBS
2234

RENEWAL DATE 6-30-21

FILED
Date 12/4/19 By SS
This Survey Consists Of:
1 sheet(s) Map
0 page(s) Narrative
JACKSON COUNTY SURVEYOR

381W23DB TL'S 4000, 4007 & 4008

THIS PLAT WAS PREPARED USING AN EPSON SC-T5200 WITH EPSON T6925 INK ON CONTINENTAL JPC4M2 POLYESTER FILM.