

ROYAL HEIGHTS EXTENSION NO. 3

A RE-SUBDIVISION OF PART OF LOT 8 AMY'S COTTAGE ADDITION.
TO CENTRAL POINT, JACKSON COUNTY, OREGON.

DEDICATION

KNOW ALL MEN BY THESE PRESENTS, that we N.A. MEAD and Rachel M. Mead, are the owners in fee simple of the lands hereon described and that we have subdivided the same into lots, blocks, and streets as shown hereon, and the number and size of the lots and the lengths of all lines are plainly set forth, and that this plat is a correct representation of the said subdivision, and we do hereby dedicate to the public for public use all streets as shown hereon and we do hereby designate said subdivision as ROYAL HEIGHTS EXTENSION NO. 3

IN WITNESS WHEREOF we have set our hands and seals this 6th day of Aug 1963

N.A. Mead
STATE OF OREGON)
County of Jackson) S.S.
Rachel M. Mead

A.D. 1963

Personally appeared the above named N.A. Mead and Rachel M. Mead and acknowledged the foregoing instrument to be their voluntary act and deed. Before me.

Betty L. Ladd
Notary Public for Oregon

My commission expires the 28th day of February 1964

Examined and approved by the City of Central Point Planning Commission in regular session this the 16th day of May, 1963

ATTEST: *Robert C. Jantzer* Secretary
Harry P. Jarm Resident

Examined and approved by the Rogue River Valley Irrigation District in regular session this the 6 day of August 1963

ATTEST: *Herold W. Weston* Secretary
Otto Bohmert President

Examined and approved this 16th day of August, 1963

Thad W. Hatten
County Assessor

All taxes paid in full to date this the 16 day of Aug, 1963

De Leonard High
County Sheriff

Examined and recommended for approval of the County Court this the 22nd day of August, 1963

Mark E. Boyden
County Surveyor

For order of the County Court approving this plat see Volume Page, of County Commissioners' Journal of Proceedings.

Emy Radel
County Clerk

578581

Filed for record this 13 day of September, 1963, at 2:25 o'clock P.M. and recorded in 9 Volume of Plats at Page 31 of records of Jackson County, Oregon.

by Deputy
Emy Radel
County Recorder

by Deputy

SURVEYOR'S CERTIFICATE

STATE OF OREGON)
County of Jackson) S.S.

I, L.N. Dow a duly registered Surveyor of the State of Oregon, being first duly sworn, do hereby certify that I have correctly surveyed and marked with proper monuments as provided by law the tract of land hereon shown and the said plat is a correct representation of the same, and the following is an accurate description of the boundary lines.

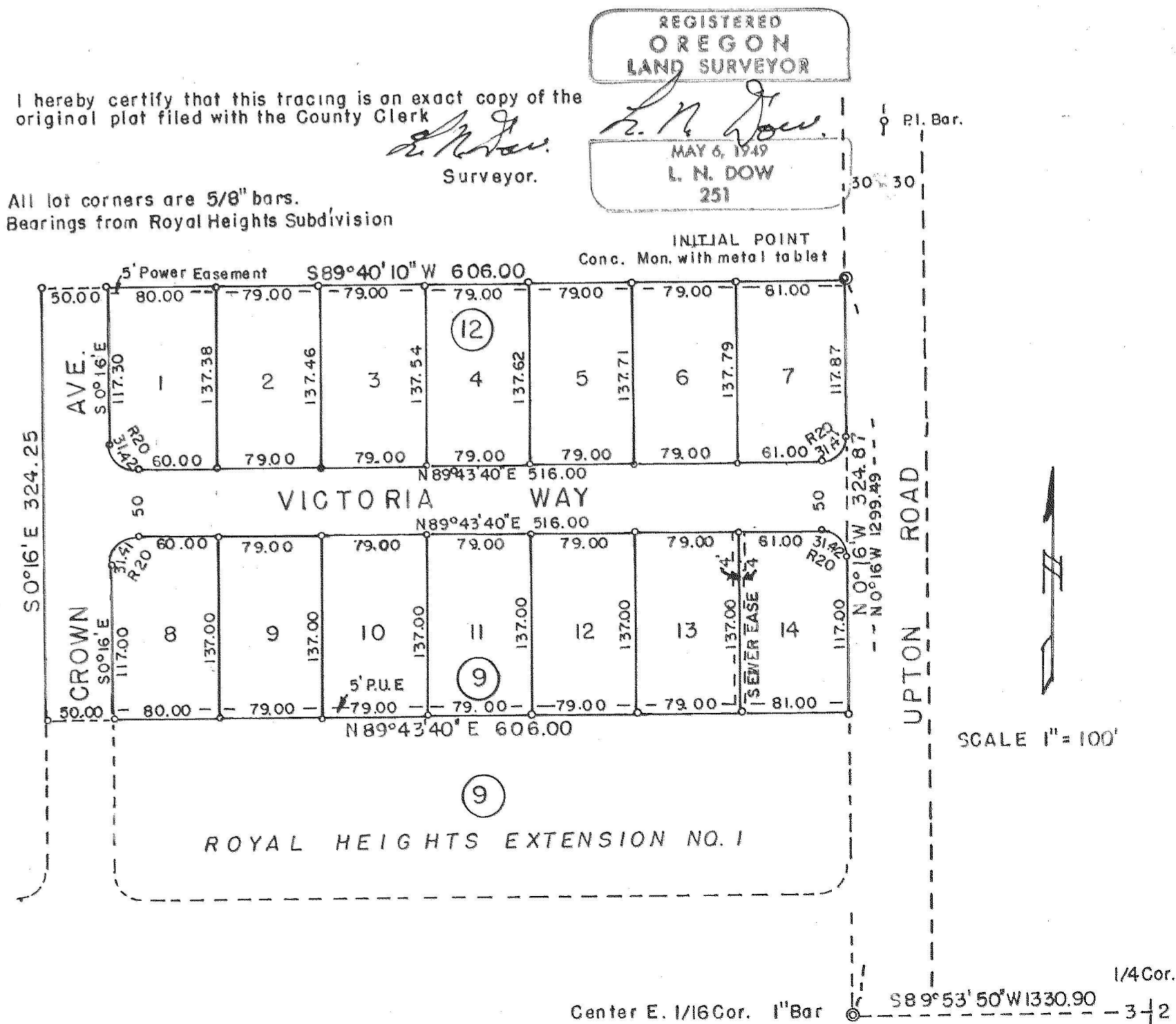
Beginning at a concrete monument with metal tablet set six inches below the surface of the ground, on the west line of Upton Road, said monument being S89°53'50"W 1330.90 feet and N0°16'W 1299.49 feet from the 1/4 Section corner on the east line of Section 3, Township 37 South, Range 2 West, Willamette Meridian, Jackson County, Oregon; from this beginning point thence S89°40'10"W a distance of 606.00 feet, thence S0°16'E a distance of 324.25 feet to a 5/8" bar at the northeast corner of Lot 7, Block 10, Royal Heights Extension No. 1, thence along the north line of said Extension No. 1, N89°43'40"E a distance of 606.00 feet to the west line of Upton Road at the northeast corner of Lot 7 Block 9 Royal Heights Extension No. 1, thence along the west line of Upton Road, N0°16'W 324.87 feet to the point of beginning.

L. N. Dow
Surveyor

Subscribed and sworn to before me this 6th day of August, 1963

Lorraine A. Beard
Notary Public for Oregon.

My commission Expires the 17th day of May, 1967



Written narrative to accompany Subdivision Plat of
Royal Heights Extension No. 3

Survey completed August 8, 1963.

Located in Amy's Cottage Addition, Section 3 T. 37 S. R 2 W.
Willamette Meridian, Central Point, Jackson County, Oregon.

Meridian from Royal Heights Subdivision, done previously.

Procedure: All lot corner pins intact and in good shape
along the north line of Royal Heights Extension No. 1, giving
control for the south line of this one.

MAVINC → (Havomh) the west line of Upton Road tied down from the 1/16 cor
previously used for Royal Heights and the P.I. Bar on Upton Road
to the north of all these units.

Computed control was then used for the north line, this control
computed from a previously filed survey showing proportioned
distances for the entire area.

The owner was then contacted on the north line and an agreement
line was processed by the attorney to fix the line as staked.

The west line of this plat is an extension of the west line of
Crown avenue from previous stakes to the south.

With the above controls 5/8 bars was then set at all lot corners
as shown on the subdivision plat.

A concrete monument with metal tablet was set at the northeast
corner, on the west line of Upton Road for the initial point.

REGISTERED
OREGON
LAND SURVEYOR

L. N. Dow

MAY 6, 1949
L. N. DOW
251

