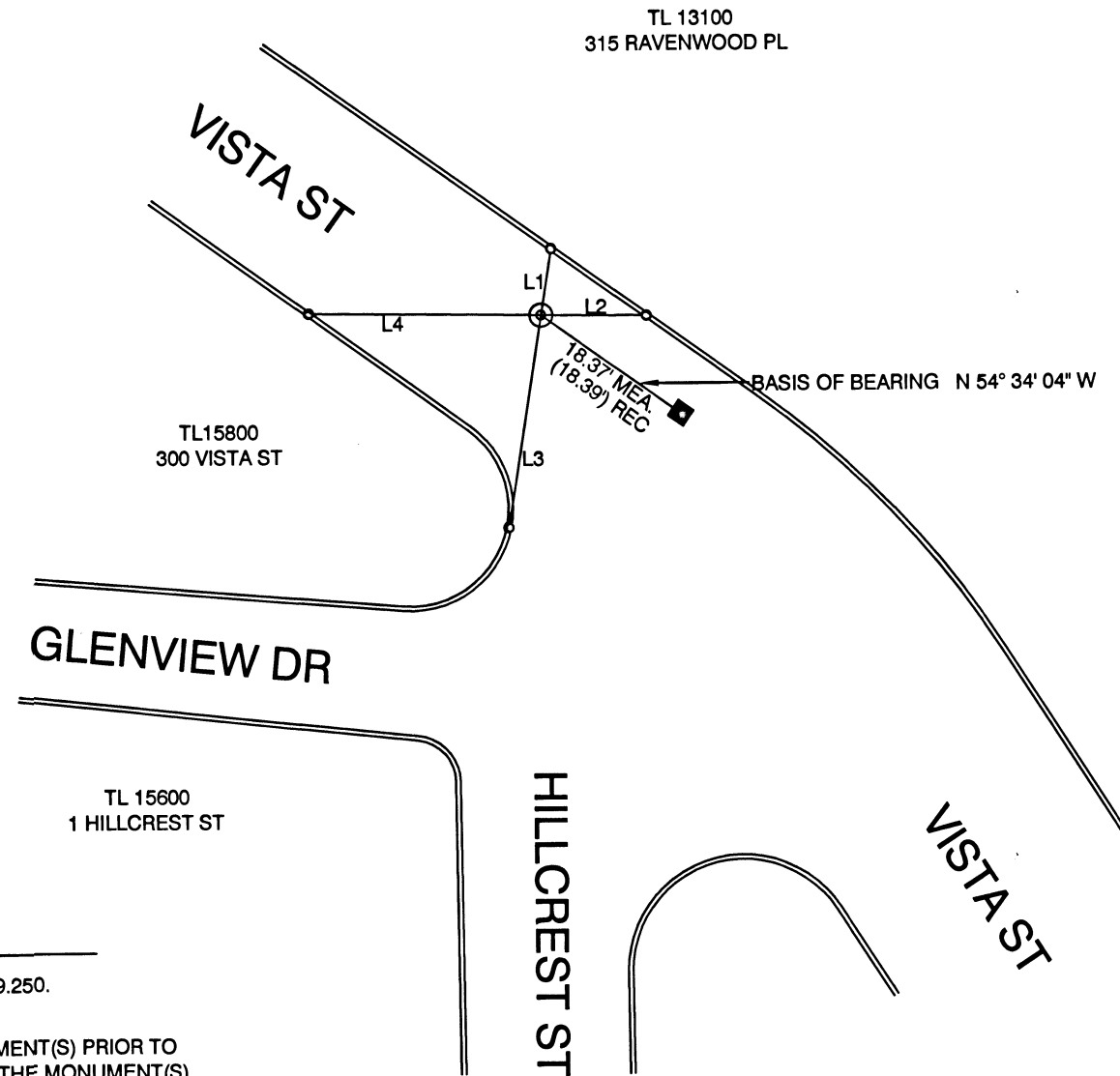
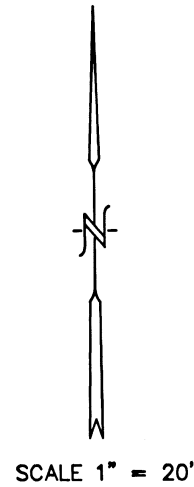


LINE TABLE

LINE	BEARING - RP TO MON.	DISTANCE
L1	S 08° 59' 29" W	7.23'
L2	N 89° 18' 15" W	11.36'
L3	N 08° 59' 29" E	23.15'
L4	S 89° 18' 15" E	25.04'



MAP OF SURVEY

FOR
 CITY OF ASHLAND, ENGINEERING DIVISION
 20 EAST MAIN STREET, ASHLAND, OREGON 97520

LOCATED IN
 THE NW 1/4 OF SECTION 9
 TOWNSHIP 39 SOUTH, RANGE 1 EAST, WILLAMETTE MERIDIAN,
 CITY OF ASHLAND, JACKSON COUNTY, OREGON

LEGEND

- REFERENCE POINT (RP) ; SET LEAD PLUG IN 1/4" DRILL HOLE WITH TACK AND BRASS TAG MARKED "CITY OF ASHLAND" IN TOP OF CURB.
- ⊙ FOUND 3" BRASS DISK STAMPED " CITY OF ASHLAND SURVEY MONUMENT" IN SURVEY MONUMENT CASE PER S/N 19313, REPLACED WITH 5/8" X 12" REBAR W/2" DIAMETER BRONZE CAP WITH PUNCH MARK STAMPED " CITY OF ASHLAND SURVEY MARKER, " 1/4" BELOW SURFACE. SHORTENED REBAR DUE TO WATERLINE DIRECTLY BENEATH.
- ◆ FOUND 1" IRON BOLT IN SURVEY MONUMENT CASE PER S/N 19313.

NOTES

1. ALL SET MONUMENTS ARE AT THE INTERSECTION OF REFERENCE POINTS.

REGISTERED
 PROFESSIONAL
 LAND SURVEYOR

Bradley F Barber

OREGON
 MARCH 18, 1997
 BRADLEY F. BARBER
 02806PLS

EXPIRES 12-31-2019

SURVEY NARRATIVE

TO COMPLY WITH PARAGRAPH ORS 209.150, AND ORS 209.250.

PURPOSE: TO REFERENCE EXISTING CENTERLINE MONUMENT(S) PRIOR TO CONSTRUCTION ACTIVITIES AND TO REPLACE THE MONUMENT(S) AFTER CONSTRUCTION ACTIVITIES ARE COMPLETED.

BASIS OF BEARING: CENTERLINE OF VISTA STREET PER S/N 19313

PROCEDURE: SET LEAD PLUG AND TACK WITH TAG IN 1/4" DRILL HOLE IN TOPS OF CURB MARKED "CITY OF ASHLAND" ON TWO QUADRANTS OF INTERSECTION. OCCUPIED EACH LEAD AND TACK AND SET OPPOSING LEAD AND TACK BY EXTENDING LINE FROM MONUMENT TO TOP OF CURB. REFERENCE POINTS WERE ESTABLISHED SO THAT STRAIGHT LINES FROM OPPOSING REFERENCE MARKS ARE THE MONUMENT LOCATION. THE INTERSECTION MONUMENT WAS REPLACED DUE TO DISTURBANCE DURING CONSTRUCTION BY OCCUPYING RP'S SET PRIOR TO CONSTRUCTION AND INTERSECTING THE LINES PRODUCED FROM THE RP'S, AUGUST 7, 2019. INSTRUMENT NIKON DTM-322 TOTAL STATION.

DATE: 08-7-2019

•• RECEIVED ••
 DATE 9/3/19 BY PB
 This survey consists of:
1 sheet(s) Map
0 pages(s) Narrative
 JACKSON COUNTY
 SURVEYOR

FILE H:\Hillcrest Vista Int.DWG

CITY OF ASHLAND
 20 E. MAIN STREET
 ASHLAND, OREGON

DRAWN BY <u>BFB</u>	DATE <u>08-7-2019</u>	PREPARER'S JOB NO.
REVIEWED BY <u>SF</u>	DATE <u>08-7-2019</u>	
REVIEWED BY <u>KJ</u>	DATE <u>08-7-2019</u>	AGENCY JOB NO.
REVIEWED BY	DATE	

PUBLIC WORKS ENGINEERING
 www.ashland.or.us 541-488-5587 fax 488-6006

DRAWING NO. 1 OF 1