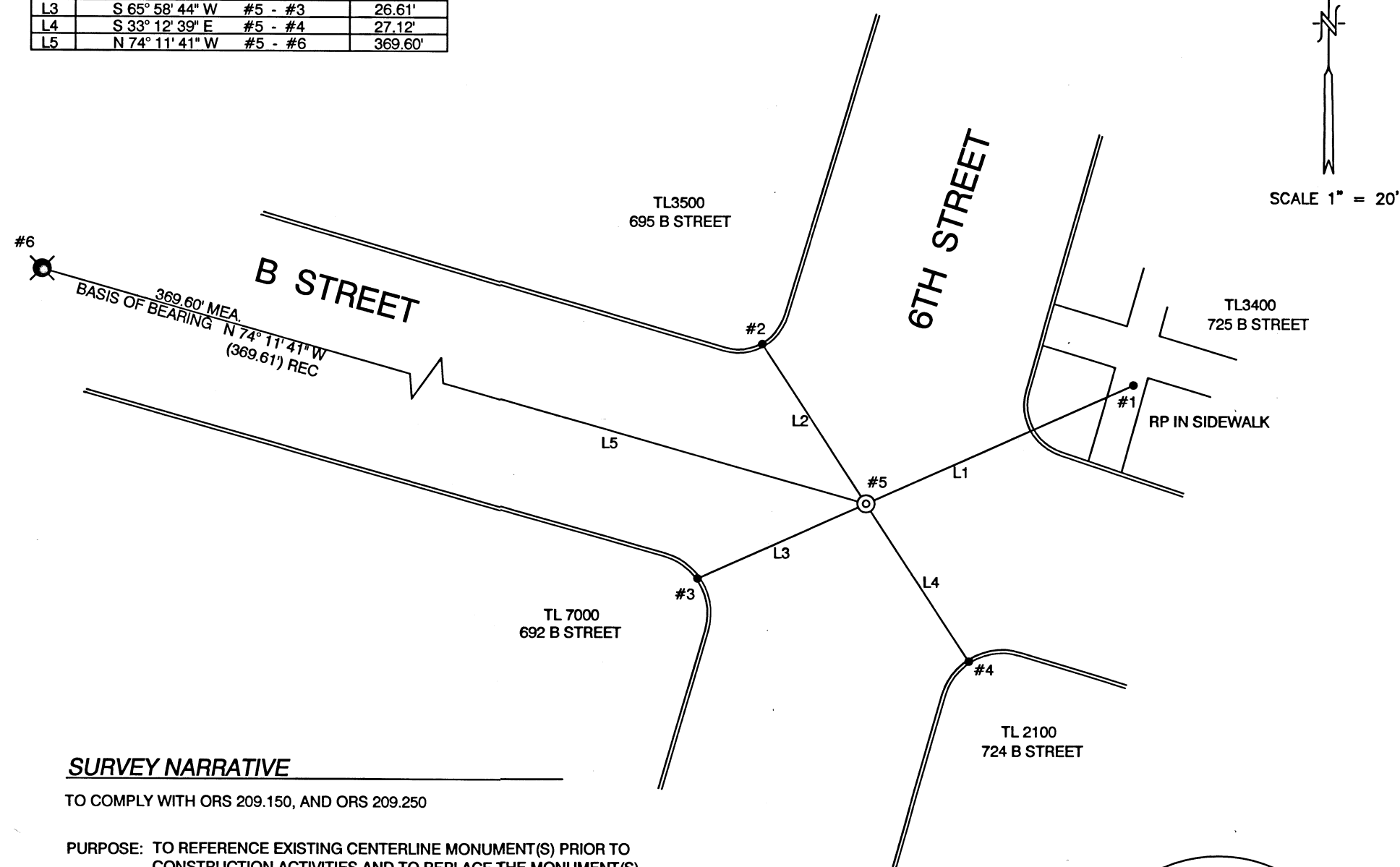


**LINE TABLE**

LINE	BEARING - PIPE # TO RP #	DISTANCE
L1	N 65° 58' 44" E #5 - #1	42.14'
L2	N 33° 12' 39" W #5 - #2	27.42'
L3	S 65° 58' 44" W #5 - #3	26.61'
L4	S 33° 12' 39" E #5 - #4	27.12'
L5	N 74° 11' 41" W #5 - #6	369.60'



**MAP OF SURVEY**  
 FOR  
 CITY OF ASHLAND, ENGINEERING DIVISION  
 20 EAST MAIN STREET, ASHLAND, OREGON 97520

LOCATED IN  
 THE NE 1/4 OF SECTION 9  
 TOWNSHIP 39 SOUTH, RANGE 1 EAST, WILLAMETTE MERIDIAN,  
 CITY OF ASHLAND, JACKSON COUNTY, OREGON

**LEGEND**

- REFERENCE POINT (RP) ; SET LEAD PLUG IN 1/4" DRILL HOLE WITH TACK AND BRASS TAG MARKED "CITY OF ASHLAND" IN TOP OF CURB. UNLESS OTHERWISE MARKED.
- ⊙ FOUND 3/4" IRON PIPE PER S/N 16699, REPLACED WITH 5/8" X 30" REBAR W/ 2" DIAMETER BRONZE CAP WITH PUNCH MARK STAMPED "CITY OF ASHLAND SURVEY MARKER" 1/4" BELOW SURFACE.
- ⊗ FOUND 3/4" IRON PIPE , IN MONUMENT CASE PER S/N 16699

**NOTES**

1. ALL SET MONUMENTS ARE AT THE INTERSECTION OF REFERENCE POINTS.

REGISTERED  
 PROFESSIONAL  
 LAND SURVEYOR

*Bradley F Barber*

OREGON  
 MARCH 18, 1997  
 BRADLEY F. BARBER  
 02806PLS  
 EXPIRES 12-31-2019

**SURVEY NARRATIVE**

TO COMPLY WITH ORS 209.150, AND ORS 209.250

PURPOSE: TO REFERENCE EXISTING CENTERLINE MONUMENT(S) PRIOR TO CONSTRUCTION ACTIVITIES AND TO REPLACE THE MONUMENT(S) AFTER CONSTRUCTION ACTIVITIES ARE COMPLETED.

BASIS OF BEARING: RECORD MONUMENTS IN 'B' STREET PER S/N 16699

PROCEDURE: SET LEAD PLUG AND TACK WITH TAG IN 1/4" DRILL HOLE IN TOP OF CURB/SIDEWALK MARKED "CITY OF ASHLAND" ON TWO QUADRANTS OF INTERSECTION. OCCUPIED EACH LEAD AND TACK AND SET OPPOSING LEAD AND TACK BY EXTENDING LINE FROM MONUMENT TO RP. REFERENCE POINTS WERE ESTABLISHED SO THAT INTERSECTING STRAIGHT LINES FROM OPPOSING REFERENCE MARKS ARE THE MONUMENT LOCATION. THE 3/4" IRON PIPE WAS REPLACED FOR POINT #5 DUE TO DISTURBANCE DURING CONSTRUCTION BY OCCUPYING RPS SET PRIOR TO CONSTRUCTION AND INTERSECTING THE LINES PRODUCED FROM THE RPS, AUGUST 7, 2019. INSTRUMENT NIKON DTM-322 TOTAL STATION.

DATE: 08-7-2019

39-1E-09A

•• RECEIVED ••  
 DATE 9/3/19 BY PB  
 This survey consists of:  
 1 sheet(s) Map  
 0 pages(s) Narrative  
 JACKSON COUNTY  
 SURVEYOR

FILE H:\B ST SV MAP.DWG

CITY OF ASHLAND 20 E. MAIN STREET ASHLAND, OREGON			
DRAWN BY	DATE	PREPARER'S JOB NO.	
BFB	08-7-2019		DRAWING NO. 1 OF 1
REVIEWED BY	DATE	AGENCY JOB NO.	
SF	08-7-2019		
REVIEWED BY	DATE		
KJ	08-7-2019		
REVIEWED BY	DATE		
<b>PUBLIC WORKS ENGINEERING</b>			
www.ashland.or.us 541-488-5587 fax 488-6006			