

SE 1/4 SECTION 2 T37S R2W WM

CONTROL INFORMATION

SURVEY DATUM- OREGON COORDINATE REFERENCE SYSTEM (OCRS):
GRANTS PASS - ASHLAND ZONE,
NAD83(2011) EPOCH 2010 (INTERNATIONAL FEET)

EQUIPMENT- THE CONTROL NETWORK FOR THIS SURVEY WAS PERFORMED ON MAY 30 & 31, 2017, AND JULY 19, 2017. 2 LEICA GS14 GNSS RECEIVERS, AND 1 LEICA 1200 GPS RECEIVER WAS UTILIZED FOR THE STATIC NETWORK. FOUND MONUMENTS SHOWN HEREON WERE RECOVERED FROM JULY OF 2017 THROUGH AUGUST OF 2017 AND TIED UTILIZING A LEICA GS14 GNSS RECEIVER CONNECTED TO THE ORGN, OR TIED WHILE OCCUPYING CONTROL SHOWN HEREON UTILIZING A LEICA MS-60 MULTI STATION IN ACCORDANCE WITH ODOT'S SURVEY POLICY AND PROCEDURE'S MANUAL.

SHEET INDEX:

- 1 CONTROL NETWORK AND NARRATIVES.
- 2 SURVEY SHEET

SURVEY NARRATIVE

THIS SURVEY WAS MADE AS A RESULT OF THE OREGON DEPARTMENT OF TRANSPORTATION'S I-5: EXIT 33 OFF RAMP IMPROVEMENTS PROJECT. THE PURPOSE OF THIS SURVEY IS TO REPLACE MONUMENTS DESTROYED BY CONSTRUCTION IN CONFORMANCE WITH ORS CHAPTER 209, SECTION 150. PRIOR TO CONSTRUCTION, A CONTROL NETWORK WAS ESTABLISHED AND AN INVENTORY OF MONUMENTS IN THE CONSTRUCTION WORK AREA WAS PERFORMED. ALL MONUMENTS SUBJECT TO DISTURBANCE BY CONSTRUCTION ACTIVITY WERE TIED TO THE CONTROL NETWORK. MAP OF SURVEY 20656, PERFORMED BY 'OBEC', FOR THE OREGON DEPARTMENT OF TRANSPORTATION, WAS UTILIZED IN ORDER TO DETERMINE THE RIGHT OF WAY FOR SAID CONSTRUCTION PROJECT. THIS MAP UTILIZED A LOCAL DATUM PLANE WHICH WAS COMMON FOR ODOT PROJECTS AT THE TIME, WHILE THE NEW PROJECT SHOWN HEREON UTILIZED OCRS COORDINATES (SEE CONTROL NARRATIVE). ALL NETWORK POINTS ON SAID MAP 20656 WERE UTILIZED IN THE NEW NETWORK, WITH THE EXCEPTION OF NETWORK POINT 3 WHICH WAS DESTROYED AND NO LONGER EXISTS. SAID MAP OF SURVEY 20656 WAS TRANSLATED TO THE NEWLY ESTABLISHED POINT 1978905-05 AND ROTATED TO POINT 19789-01. ALL FOUND MONUMENTS SHOWN HEREON WERE ALSO SHOWN ON SAID MAP OF SURVEY 20656. A CHECK OF THE TRANSLATED AND ROTATED COORDINATE VALUES, AGAINST THE NEW COORDINATE VALUES, SHOWED THAT ALL DELTA VALUES WERE LESS THAN 0.04' WITH ONLY TWO POINTS VARYING BY 0.06' AND 0.08'. REPORTED VALUES SHOWN HEREON ARE THE NEWLY MEASURED VALUES AND NOT THE TRANSLATED VALUES WITH THE EXCEPTION OF POINT 1020. POINT 1020 WAS DESTROYED BY AN UNKNOWN CAUSE PRIOR TO STARTING THIS PROJECT. SINCE NO TIE TO 1020 WAS MADE BY THIS OFFICE, THE VALUE CREATED BY TRANSLATING AND ROTATING MAP OF SURVEY 20656 WAS HELD AS THE BEST AVAILABLE EVIDENCE IN ORDER TO PERPETUATE ITS POSITION FOR FUTURE SURVEYS.

POINT 1013 WAS TIED DURING THE ENGINEERING PHASE OF THIS PROJECT BUT DESTROYED BY CONSTRUCTION. THE NEW MEASUREMENT VS TRANSLATED VALUE DISAGREED BY 0.04'. THE NEW VALUE WAS HELD AS THE BEST AVAILABLE EVIDENCE TO REPLACE THE MONUMENT IN ITS POSITION PRIOR TO CONSTRUCTION.

POINT 1019 WAS TIED DURING THE ENGINEERING PHASE OF THIS PROJECT BUT DESTROYED BY CONSTRUCTION. THE NEW MEASUREMENT VS TRANSLATED VALUE DISAGREED BY 0.03'. THE NEW VALUE WAS HELD AS THE BEST AVAILABLE EVIDENCE TO REPLACE THE MONUMENT IN ITS POSITION PRIOR TO CONSTRUCTION.

POINT 1020 WAS DESTROYED BY AN UNKNOWN CAUSE PRIOR TO INITIATING THIS PROJECT. DUE TO THE FACT NO TIE WAS MADE BY THIS OFFICE, THE TRANSLATED VALUE WAS HELD AS THE BEST AVAILABLE EVIDENCE IN ORDER TO RE-ESTABLISH ITS POSITION.

CONTROL NARRATIVE

A STATIC GPS NETWORK USING REDUNDANT 2 HOUR OCCUPATIONS WAS PERFORMED TO DERIVE COORDINATES ON POINT 1978901, 1978902, AND 1978905. THIS NETWORK WAS PROCESSED AND ADJUSTED UTILIZING A 3D LEAST SQUARES ADJUSTMENT, HOLDING FIXED OREGON REAL TIME GEODETIC NETWORK (ORGN) STATIONS, 'CTPT', AND 'ASHL'. ADDITIONAL REDUNDANT 20 MINUTE OCCUPATIONS WERE PERFORMED ON POINTS 1978704, 1978906, 1978907, 1978908, 1978909, AND 1978910, WHILE OCCUPYING POINTS 1978901 AND UTILIZING ORGN STATION DATA FROM 'CTPT'. THIS NETWORK WAS PROCESSED AND ADJUSTED UTILIZING A 3D LEAST SQUARES ADJUSTMENT, HOLDING FIXED (ORGN) STATIONS, 'CTPT' AND PREVIOUSLY ADJUSTED POINT 1978901.

CONTROL POINTS FOR THIS SURVEY WERE NOT SET ON AND DO NOT REPRESENT PROPERTY OR RIGHT OF WAY LINES AND ARE INTENDED FOR THE USE BY ODOT IN SUPPORT OF THIS AND FUTURE PROJECTS. IT IS NOT THE INTENT OF ODOT TO PERPETUATE THESE CONTROL POINTS AS MONUMENTS.

CONTROL POINT COORDINATE TABLE

RPC=RED PLASTIC CAP
AC= ALUMINUM CAP IR=IRON REBAR FD=FOUND

PT. NO.	OCRS NORTHING	OCRS EASTING	DATE	DESCRIPTION
1978901	234401.61	276523.91	6/1/2017	FD RPC "OBEC CONTROL"
1978902	229342.87	283899.67	6/1/2017	FD 1" COPPER PLUG "OBEC"
1978904	229563.14	280637.44	7/19/2017	FD RPC "OBEC CONTROL"
1978905	229473.68	281197.34	6/1/2017	FD 1" COPPER PLUG "OBEC"
1978906	229383.36	281294.01	7/19/2017	FD 1" COPPER PLUG "OBEC"
1978907	229466.53	281852.21	7/19/2017	FD 3" BRASS DISK "1980 RESET"
1978908	227922.96	281452.46	7/19/2017	SET 5/8" x 30" IR w/ AC "ODOT CONTROL POINT 19789-8"
1978909	228772.39	280661.33	7/19/2017	SET 5/8" x 30" IR w/ AC "ODOT CONTROL POINT 19789-9"
1978910	229278.38	280595.05	7/19/2017	SET 5/8" x 30" IR w/ AC "ODOT CONTROL POINT 19789-10"
CTPT	228693.68	282775.32	EPOCH 2010.00	ORGN STATION/RECEIVER "CTPT"

CONTROL NETWORK LEGEND


- ☆ FOUND GPS POINT/STATION
- ✱ DESTROYED GPS POINT
- ★ SET GPS POINT
- ⊙ ORGN STATION
- ☆-☆ LINES OF OBSERVATION (STATIC)

LINE LEGEND

- GOVERNMENT SECTION LINE
- GOVERNMENT 1/4 SECTION LINE
- PROPERTY/RIGHT OF WAY
- GOVERNMENT DLC LINE

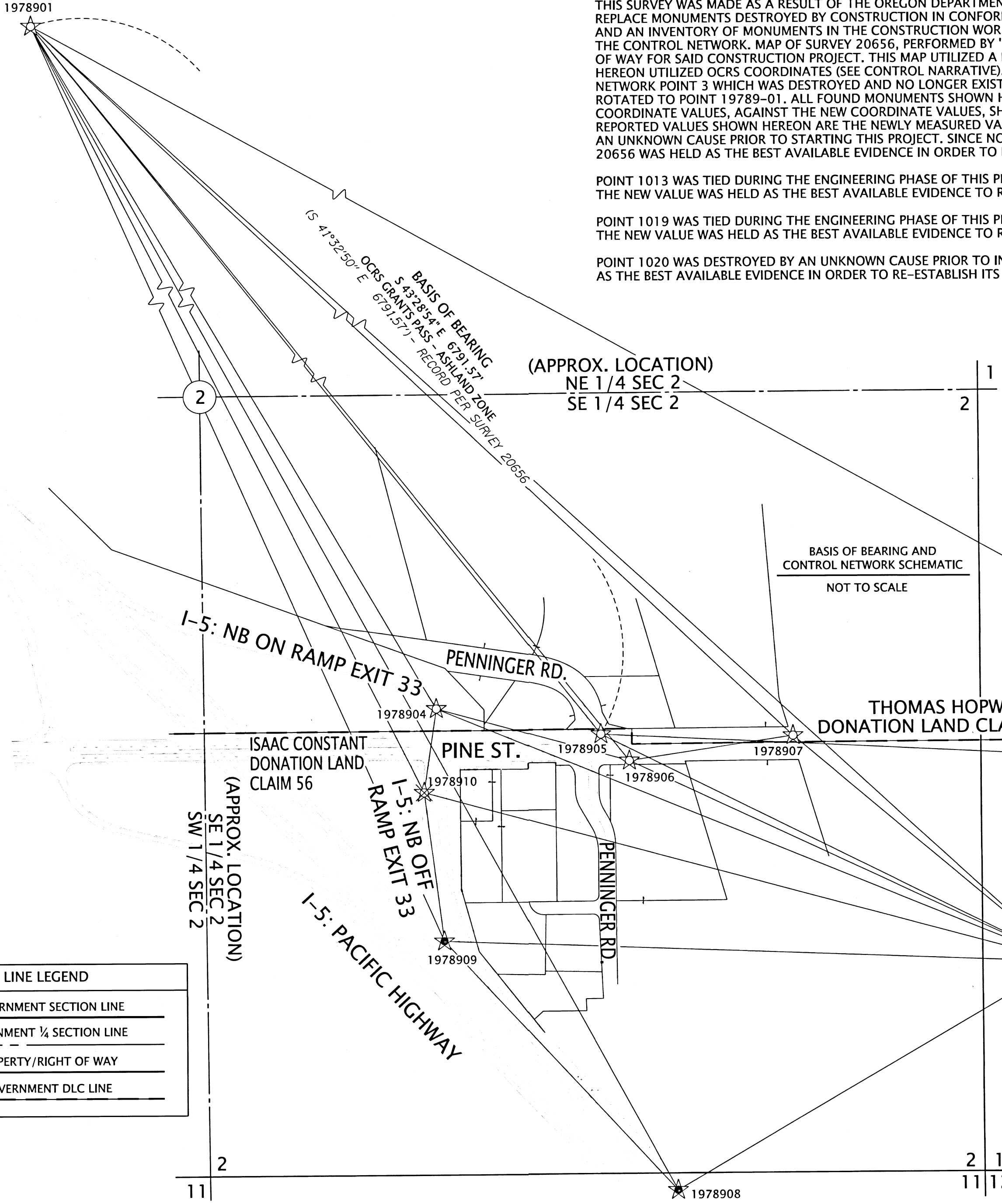
REGISTERED PROFESSIONAL LAND SURVEYOR
J. Weisz
OREGON
MARCH 14, 2017
JASON ROBERT WEISZ
91618
RENEWS: 6-30-2020

OREGON DEPARTMENT OF TRANSPORTATION
RIGHT-OF-WAY BOUNDARY MONUMENTATION MAP
I-5: EXIT 33 OFF RAMP IMPROVEMENTS PROJECT
PACIFIC HIGHWAY
JACKSON COUNTY



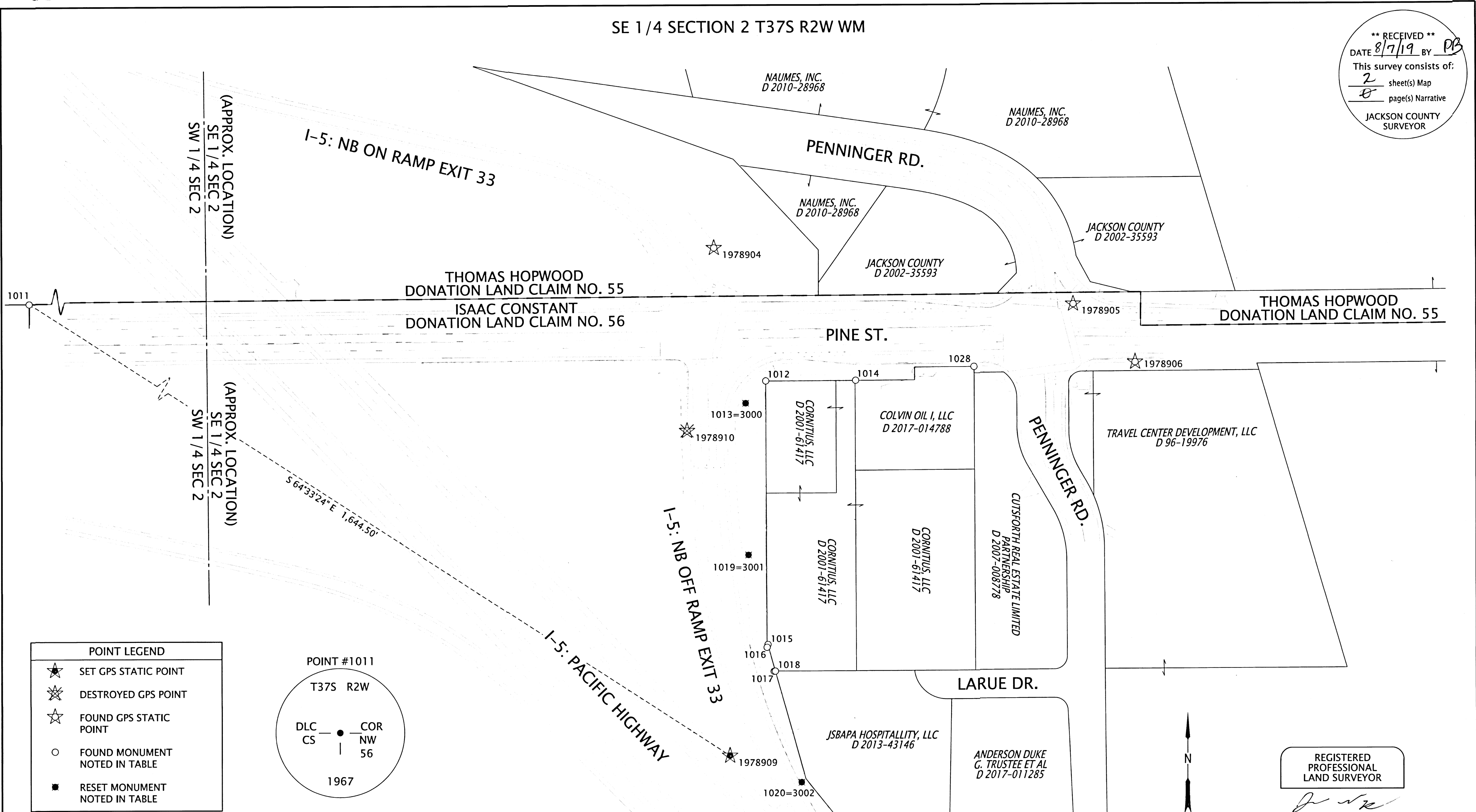
ODOT REGION 3 TECH CENTER
100 ANTELOPE RD.
WHITE CITY, OR 97503 KEY NO. 19789

JUNE 22, 2019
SCALE: NTS
SHEET 1 OF 2



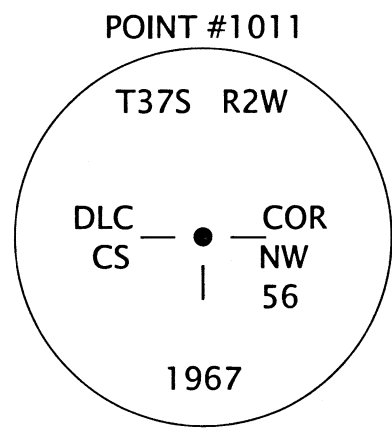
SE 1/4 SECTION 2 T37S R2W WM

**** RECEIVED ****
 DATE 8/7/19 BY PB
 This survey consists of:
 2 sheet(s) Map
 0 page(s) Narrative
 JACKSON COUNTY SURVEYOR



POINT LEGEND

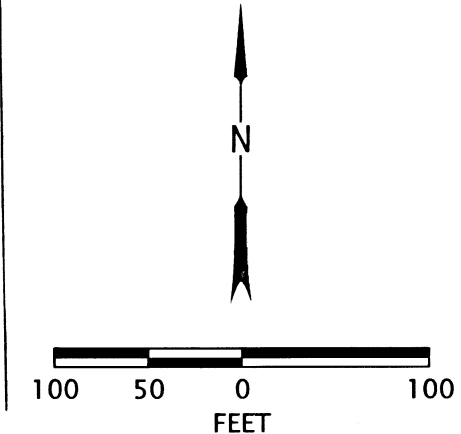
- ★ SET GPS STATIC POINT
- ✱ DESTROYED GPS POINT
- ☆ FOUND GPS STATIC POINT
- FOUND MONUMENT NOTED IN TABLE
- RESET MONUMENT NOTED IN TABLE



JCS=JACKSON COUNTY SURVEYOR
 *=DESTROYED AND NOTED IN NARRATIVE
 CS=COUNTY SURVEY IR=IRON REBAR FD=FOUND
 AC=ALUMINUM CAP RPC/YPC=RED/YELLOW PLASTIC CAP

RECOVERED & SET MONUMENT TABLE

PT. NO.	OCRS NORTHING	OCRS EASTING	DATE	DESCRIPTION	REFERENCE DOCUMENT
1011	229478.89	279176.33	8/15/2017	FD 2-1/2" BRASS CAP "T37S R2W, DLC COR, NW 56, CS 1967"	JCS 3RD RE-ESTAB
1012	229355.95	280717.77	8/15/2017	FD CONCRETE NAIL w/ 3/4" BRASS TAG "LS 2234"	CS 14044
1013 *	229321.12	280686.43	8/15/2017	FD 1-1/2" AC "OREGON DEPT OF TRANS"	CS 13985
3000	229321.12	280686.43	7/22/2019	SET 5/8" X 30" IR w/AC "ODOT RESET"	-
1014	229356.80	280858.00	8/15/2017	FD YPC "L.J. FRIAR & ASSOC."	CS 14044
1015	228945.43	280720.83	8/15/2017	FD 1-1/2" AC "OREGON DEPT OF TRANS"	CS 13985
1016	228941.09	280719.45	8/15/2017	FD YPC "L.J. FRIAR & ASSOC."	CS 14044
1017	228903.57	280730.50	8/15/2017	FD YPC "L.J. FRIAR & ASSOC."	CS 14044
1018	228903.86	280732.39	8/15/2017	FD RPC "D. MINNECI LS 2349"	CS 13836
1019 *	229084.84	280690.89	8/15/2017	FD 1-1/2" AC "OREGON DEPT OF TRANS"	CS 13985
3001	229084.84	280690.89	7/22/2019	SET 5/8" X 30" IR w/AC "ODOT RESET"	-
1020 *	228731.18	280773.27	3/10/2010	PER CS 20656 - 5/8" IR w/AC "OREG STATE HWY DIV"	CS 13985
3002	228731.18	280773.27	7/22/2019	SET 5/8" X 30" IR w/AC "ODOT RESET"	-
1021	228539.61	280911.51	8/15/2017	FD 1-1/2" AC "OREGON DEPT OF TRANS"	CS 13985
1022	228365.90	281048.14	8/15/2017	FD 1-1/2" AC, ILLEGIBLE	CS 13985
1028	229377.88	281042.62	8/15/2017	FD YPC "FARBER LS 2189"	CS 13559



REGISTERED PROFESSIONAL LAND SURVEYOR

 OREGON
 MARCH 14, 2017
 JASON ROBERT WEISZ
 91618
 RENEWS: 6-30-2020

OREGON DEPARTMENT OF TRANSPORTATION

RIGHT-OF-WAY BOUNDARY MONUMENTATION MAP
 I-5: EXIT 33 OFF RAMP IMPROVEMENTS PROJECT
 PACIFIC HIGHWAY
 JACKSON COUNTY

ODOT REGION 3 TECH CENTER
 100 ANTELOPE RD.
 WHITE CITY, OR 97503 KEY NO. 19789

JUNE 22, 2019
 SCALE: 1"=100'
 SHEET 2 OF 2