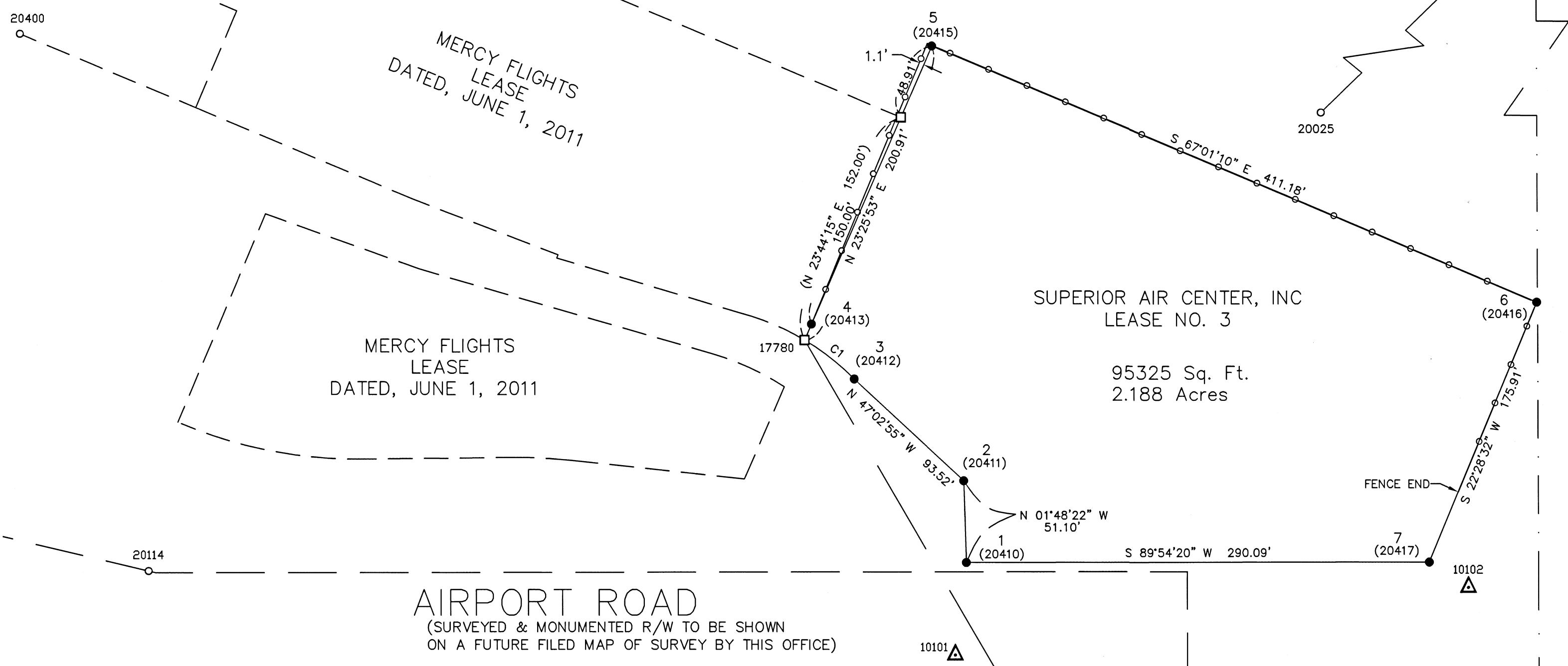


AIRPORT LEASE 01-18

NE 1/4 of Section 12, T37S, R2W, W.M.
Jackson County, Oregon

10005
PLSS CORNER POSITION
SECTION CORNER 1 | 6
12 | 7
SECTIONS 6&7, T37S,R1W
SECTIONS 1&12 T37S,R2W
SEE JCS 4TH RE-ESTABLISHMENT NOTES
RE: RM1= #20025
RM2= #20026



CURVE	DELTA ANGLE	RADIUS	ARC LENGTH	CHORD BEARING	CHORD LENGTH
C1	14°36'49"	155.27'	39.60'	N 51°48'12" W	39.495'

SURVEY NARRATIVE IN COMPLIANCE WITH ORS 209.250

SURVEY FOR: JACKSON COUNTY AIRPORT AUTHORITY
1000 TERMINAL LOOP PKWAY STE. 201
MEDFORD, OR 97504

SURVEY BY: JACKSON COUNTY SURVEYOR

EQUIPMENT: TRIMBLE S7 ROBOTIC TOTAL STATION, TRIMBLE R8 GPS, AND TRIMBLE TSC3 DATA COLLECTOR

PURPOSE: TO SURVEY, MONUMENT, AND RE-DESCRIBE THE SUBJECT LEASE AREA AS REQUESTED BY THE JACKSON COUNTY AIRPORT AUTHORITY AND THEIR LEASEES.

PROCEDURE: UTILIZING THE AFOREMENTIONED EQUIPMENT, DETERMINED A GEODETIC POSITION OF THE 1/4 CORNER COMMON TO SECTIONS 7 AND 12, T37S, R1 & 2W FROM THE FOUND REFERENCE MONUMENTS SHOWN HEREON. THIS LEASED AREA WAS PREVIOUSLY DESCRIBED BUT THE PURPOSE OF THE SURVEY WAS TO REDESCRIBE THE LEASED AREA RELATIVE TO THE MERCY FLIGHTS LEASE AND EXISTING FENCE LINES ALONG THE NORTHERN AND EASTERN BOUNDARIES OF SAID LEASE AREA AS SHOWN HEREON.

IT SHALL BE NOTED THAT THE AIRPORT HAS BEEN ADVISED TO RECORD UPDATED LEASE DESCRIPTIONS WHICH REFLECT THE RESULTS OF THIS SURVEY. SAID DESCRIPTIONS HAVE BEEN PROVIDED TO THE AIRPORT AUTHORITY.

LEGEND

- PLSS CORNER POSITION
- FOUND MONUMENT AS NOTED
- SET MONUMENT AS DESCRIBED
- JCS JACKSON COUNTY SURVEYOR
- RM REFERENCE MONUMENT
- WM WITNESS MONUMENT
- CP CONTROL POINT
- FS FILED SURVEY
- CHAIN LINK FENCE
- △ CONTROL POINT
- CALCULATED POSITION



Scale: 1"=60'

Basis of Bearings

Geodetic North
Per NAD 83 (2011)(2010.00)
Projected onto
Oregon Coordinate Reference System (OCRS)
Grants Pass Ashland Zone NAD83 (2011) Datum
Zone Definition
Transverse Mercator Projection NAD 83
Latitude of Grid Origin: 41°45'00"N
Central Meridian: 122°20'00"W
False Northing: 0.000 m
False Easting: 50,000 m
Central Meridian Scale: 1.000043 (exact)
Per OAR 734-005-0015 (3)(K)

10012
PLSS CORNER POSITION
1/4 CORNER 7&12, T37S, R1&2W
SEE JCS 6TH RE-ESTABLISHMENT NOTES
RE: RM1= #20027
RM2= #20028

T37S R2W SECTION 12
N 00°10'06" W 2649.43' (FS 6357=N 01°45'38" E)
T37S R1W SECTION 7

FILED
Date 3/26/19 By PB
This survey consists of:
1 sheet(s) Map
1 page(s) Narrative
JACKSON COUNTY SURVEYOR

REGISTERED
PROFESSIONAL
LAND SURVEYOR
Scott D. Fein
OREGON
NOVEMBER 10, 2010
SCOTT D. FEIN
83181
Renews 12/31/2019

NAD 83 (2011) OCRS GRANTS PASS - ASHLAND ZONE PROJECTED VALUES

POINT	NORTHING	EASTING	DESCRIPTION
10005	228020.355	287776.535	SECTION COR POSITION BASED ON REF MON TIES PER 2014 FOURTH RE-ESTAB NOTES
10012	225370.936	287784.322	1/4 SEC COR POSITION 12 & 7 BASED ON REF MON TIES PER 2007 SIXTH RE-ESTAB NOTES
10101	226298.935	287415.939	CP, 1" BC W/ PUNCH IN SE CORNER STORM DRAIN INLET SE'LY CURB RETURN OF INTX AIRPORT RD AND MILLIGAN WAY
10102	226341.588	287737.467	CP, 1" BC W/ PUNCH IN N'LY EDGE OF SIDEWALK ABOUT 75' W'LY OF AIRPORT TOWER
17780	226496.060	287321.826	POB SUPERIOR AIR LEASE = SE COR MERCY FLIGHTS LEASE (NO MONUMENT SET)
20025	227692.505	287439.560	RM 1 PER 2014 FOURTH RE-ESTAB NOTE FOR SECTION CORNER POSITION #10005
20026	228186.356	287439.736	RM 2 PER 2014 FOURTH RE-ESTAB NOTE FOR SECTION CORNER POSITION #10005
20027	225368.721	287750.133	RM 1 PER 2007 SIXTH RE-ESTAB NOTE FOR 1/4 CORNER POSITION #10012
20028	225539.163	287711.377	RM 2 PER 2007 SIXTH RE-ESTAB NOTE FOR 1/4 CORNER POSITION #10012
20114	226351.243	286910.781	FND 5/8 PIN FLUSH PER FS 7434
20400	226687.858	286830.652	FND YPC STAMPED "JACKSON C.S.", 6" DEEP, PER FS 12080
20410	226356.840	287422.925	LEASE CORNER #1, SET 5/8" BY 24" REBAR W/ 2" DIAM. ALUM. CAP STAMPED "JCS-1"
20411	226407.915	287421.315	LEASE CORNER #2, SET 5/8" BY 24" REBAR W/ 2" DIAM. ALUM. CAP STAMPED "JCS-2"
20412	226471.638	287352.864	LEASE CORNER #3, SET 1" DIAM. BRASS CAP IN SIDEWALK STAMPED "JCS-3"
20413	226497.893	287322.620	LEASE CORNER #4, SET 1" DIAM. BRASS CAP WITNESS CORNER IN SIDEWALK STAMPED "WC-4" (2.00' WC)
20415	226680.403	287401.718	LEASE CORNER #5, SET 1/2" BY 10" SPIKE W/ 3" SQ. WASHER FLUSH WITH ASPHAL SURFACE STAMPED "5"
20416	226519.871	287780.266	LEASE CORNER #6, SET 1/2" BY 10" SPIKE W/ 3" SQ. WASHER FLUSH WITH ASPHAL SURFACE STAMPED "6"
20417	226357.319	287713.016	LEASE CORNER #7, SET 5/8" BY 24" REBAR W/ 2" DIAM. ALUM. CAP STAMPED "JCS-7"

Jackson County Surveyor
Scott Fein, PLS, CWRE

10 S. Oakdale Ave., Medford, OR 97501 (541) 774-6191

Field work, computations and drafting were performed between: 2018 and 2019
Reviewed By: RLB 2/26/2018
SDF 3/25/2019

Field Crew: SDF, JMH, JMH, BP
CS Job File: 18-02

Drawn By: JMH 02/26/18 Approved: SDF 3/26/2019

Superior Air Plat.dwg