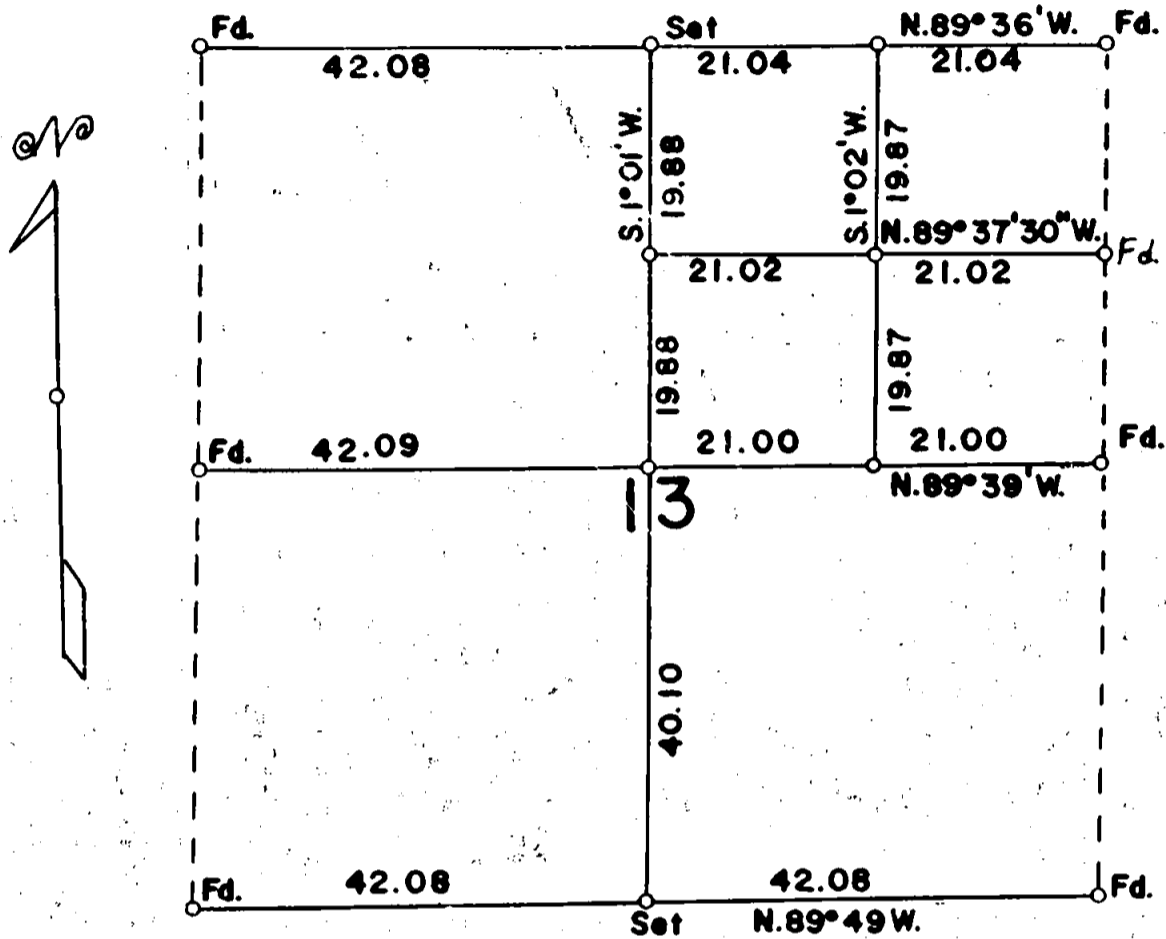


T. 40S., R. 2E. JACKSON COUNTY OREGON

DEPENDENT RESURVEY AND SUBDIVISION OF SECTION 13



Scale 1 inch = 20 chains = 1320 feet

Mean Magnetic Declination $19^{\circ}30' E.$

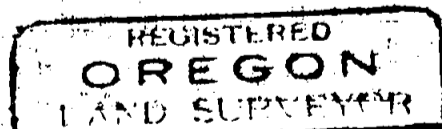
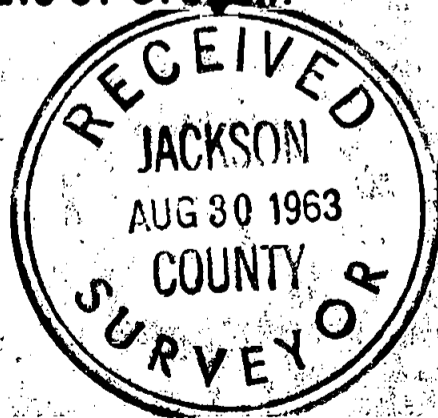
The bearings of all lines are referred to the true
meridian determined by solar observations

o = Corner Occupied and Monumented

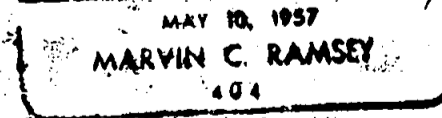
— Lines Surveyed — — — Lines Not Retraced

Survey executed July 3-22, 1963 for J.H. Baxter
& Co. of Grants Pass, Oregon.

I hereby certify that the survey represented by this plat
is executed in conformity with the laws of the
State of Oregon.



Marvin C. Ramsey



2275

4
T. 40 S., R. 2 E.

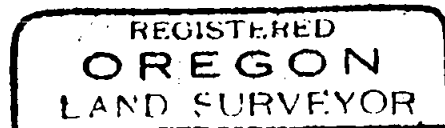
Chains

A Douglas fir 12 ins. in diam., bears N. 82° E., 13 lks.
dist., mkd. NE 1/16 S13 R5404 BT

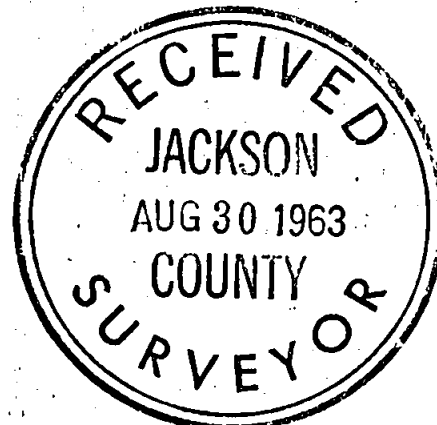
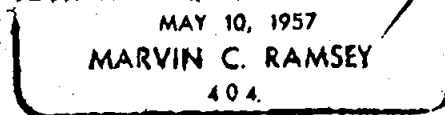
A Douglas fir 14 ins. in diam., bears S. 27° E., 17 lks.
dist., mkd. NE 1/16 S13 R5404 BT

42.04 To the center North 1/16 sec. cor.

I hereby certify that the bearings of all lines recorded
in this survey were determined by solar observations
and that the survey described in the foregoing field
notes was executed in conformity with the laws of the
State of Oregon.



Marvin C. Ramsey



T. 40 S., R. 2 E.

Chains

42.00 Point for the center $\frac{1}{4}$ sec. cor. at the intersection of the North and South center line.

Set an iron pipe 3 ft. long $1\frac{1}{2}$ ins. in diam., 28 ins. in the ground, mkd. RSL04, from which

A Douglas fir 10 ins. in diam., bears N. 26° E., 19 lks. dist., mkd. C $\frac{1}{4}$ S13 RSL04 BT

A Douglas fir 14 ins. in diam., bears S. 49° E., 46 lks. dist., mkd. C $\frac{1}{4}$ S13 RSL04 BT

A Douglas fir 12 ins. in diam., bears S. 53° W., 20 lks. dist., mkd. C $\frac{1}{4}$ S13 RSL04 BT

A Douglas fir 8 ins. in diam., bears N. 26° W., 40 lks. dist., mkd. C $\frac{1}{4}$ S13 RSL04 BT

84.09 To the $\frac{1}{4}$ sec. cor. of secs. of secs. 13 and 14, determined from the original bearing trees.

A yellow pine sawed stump 36 ins. in diam., bears S. 88° E., 39 lks. dist., with scribe mks. gone to the mill.

A yellow pine sawed stump 36 ins. in diam., bears N. 10° W., 37 lks. dist., with mks. BT exposed.

Set an iron pipe 3 ft. long $1\frac{1}{2}$ ins. in diam., 28 ins. in the ground, mkd. RSL04, from which new bearing trees

A black oak 8 ins. in diam., bears S. 11° E., $19\frac{1}{2}$ lks. dist., mkd. $\frac{1}{4}$ S13 RSL04 BT

A Douglas fir 18 ins. in diam., bears S. 21° W., 54 lks. mkd. $\frac{1}{4}$ S14 RSL04 BT.

S. $1^{\circ} 01'$ W., from the $\frac{1}{4}$ sec. cor. of secs. 12 and 13

19.88 Point for the center North $1/16$ sec. cor.

Set an iron pipe 3 ft. long 1 in. in diam., 28 ins. in the ground mkd. RSL04, from which

A Douglas fir 12 ins. in diam., bears N. 37° E., 7 lks. dist., mkd. CN $1/16$ S13 RSL04 BT

A cedar 14 ins. in diam., bears N. 52° W., 19 lks. dist., mkd. CN $1/16$ S13 RSL04 BT

39.76 To the center $\frac{1}{4}$ sec. cor. at the intersection of the East and West center line.

79.86 To the $\frac{1}{4}$ sec. cor. of secs. 13 and 24.

The North $1/16$ sec. cor. of secs. 13 and 18 is monumented and witnessed as described by the County record.

N. $89^{\circ} 37\frac{1}{2}'$ W., on the East and West center line of the NE $\frac{1}{4}$.

21.02 Point for the Northeast $1/16$ sec. cor. at the intersection of the North and South center line of the NE $\frac{1}{4}$

Set an iron pipe 3 ft. long 1 in. in diam., 28 ins. in the ground, mkd. RSL04, from which

Chains

The sec. cor. of secs. 13, 18, 19 and 24 is monumented and witnessed as described by the County record.

N. 89° 49' W., on true line bet. secs. 13 and 24.

42.08 Point for the $\frac{1}{4}$ sec. cor. at proportionate distance, fail to find any evidence of the original corner

Set an iron pipe 3 ft. long $1\frac{1}{2}$ ins. in diam., 15 ins. in the ground to bedrock with mnd. of stone to top, mkd. RS404 from which

A Douglas fir 20 ins. in diam., bears N. 1° W., 22 lks. dist., mkd. $\frac{1}{4}$ S13 RS404 BT

A Douglas fir 22 ins. in diam., bears S. 48° E., 24 lks. dist., mkd. $\frac{1}{4}$ S24 RS404 BT

84.16 To the sec. cor. to secs. 13, 14, 23 and 24. Find a mound of stone from which the original bearing trees

A black oak 18 ins. in diam., bears N. 51° E., 41 lks. dist., I open and find partial scribe mks.

A black oak 16 ins. in diam., bears S. 37° E., 38 lks. dist., I open and find axe mks., scribe mks. decayed.

A black oak 24 ins. in diam., bears S. 60° W., 84 lks. dist., chopped and decayed.

A black oak 20 ins. in diam., bears N. 30° W., 104 lks. dist., down and decayed.

Set an iron pipe 3 ft. long 2 ins. in diam., 28 ins. in the ground, mkd. RS404, from which new bearing trees

A yellow pine 10 ins. in diam., bears N. 40° E., 45 lks. dist., mkd. T40S R2E S13 RS404 BT

A Douglas fir 14 ins. in diam., bears S. 66° E., 67 lks. dist., mkd. T40S R2E S24 RS404 BT

A Douglas fir 10 ins. in diam., bears S. 53° W., 22 lks. dist., mkd. T40S R2E S23 RS404 BT

A white oak 14 ins. in diam., bears N. 33° W., 75 lks. dist., mkd. T40S R2E S14 RS404 BT

The $\frac{1}{4}$ sec. cor. of secs. 13 and 18 is monumented and witnessed as described by the County record, except the bearing tree in sec. 18 has been mutilated by a logging operation; therefore I take a new bearing tree

A black oak 8 ins. in diam., bears N. 11° E., 26 lks. dist., mkd. $\frac{1}{4}$ S18 RS404 BT

N. 89° 39' W., on the East and West center line.

21.00 Point for the center East $\frac{1}{16}$ sec. cor.

Set an iron pipe 3 ft. long 1 in. in diam., 28 ins. in the ground, mkd. RS404, from which

A Douglas fir 8 ins. in diam., bears N. 66° E., $3\frac{1}{2}$ lks. dist., mkd. CE 1/16 S13 RS404 BT

A yellow pine 10 ins. in diam., bears N. 4° W., 10 lks. dist., mkd. CE 1/16 S13 RS404 BT

Chains

The sec. cor. of secs. 7, 12, 13 and 18 is monumented and witnessed as described by the County record.

The geographic position of this corner is latitude $42^{\circ} 5' 56''$ N., and longitude $122^{\circ} 31' 6''$ W. The observed magnetic declination is $19^{\circ} 45'$ East.

July 3, 1963: at this sec. cor. at 9:15 a.m., P.S.T., I set off $42^{\circ} 6'$ N. on the lat. arc; $22^{\circ} 59\frac{1}{2}'$ N., on the decl. arc; of my Gurley solar compass and determine a meridian.

Thence

N. $89^{\circ} 36'$ W., on true line bet. secs. 12 and 13.

21.04 Point for the East $\frac{1}{16}$ sec. cor. at proportionate distance

Set an iron pipe 3 ft. long 1 in. in diam., 28 ins. in the ground, mkd. RShO4, from which

A Douglas fir 8 ins. in diam., bears S. 27° W., 42 lks. dist., mkd. E $\frac{1}{16}$ S. 13 RShO4 BT

A Douglas fir 8 ins. in diam., bears N. 73° W., 2 lks. dist., mkd. E $\frac{1}{16}$ S12 RShO4 BT

42.08 Point for the $\frac{1}{4}$ sec. cor. at proportionate distance, fail to find any evidence of the original corner.

Set an iron pipe 3 ft. long $1\frac{1}{2}$ ins. in diam., 28 ins. in the ground, mkd. RShO4, from which

A Douglas fir 14 ins. in diam., bears N. 58° E., 14 lks. dist., mkd. $\frac{1}{4}$ S12 RShO4 BT

A yellow pine 10 ins. in diam., bears S. 43° W., 25 lks. dist., mkd. $\frac{1}{4}$ S 13 RShO4 BT

84.16 To the sec. cor. of secs. 11, 12, 13 and 14 determined from the three extant original bearing trees

A black oak 20 ins. in diam., bears S. 22° E., 286 lks. dist., healed.

A white oak 12 ins. in diam., bears S. 5° W., 34 lks. dist., with top blaze decayed and bottom blaze healed.

A yellow pine 24 ins. in diam., bears N. 20° W., 16 lks. dist., down with chaining notch and mkd. BT, other mks. decayed.

Set an iron pipe 3 ft. long 2 ins. in diam., 28 ins. in the ground, mkd. RShO4, from which new bearing trees

A yellow pine 10 ins. in diam., bears N. 80° E., 38 lks. dist., mkd. T4OS R2E S12 RShO4 BT

A Douglas fir 10 ins. in diam., bears S. $62\frac{1}{2}^{\circ}$ E., 36 lks. dist., mkd. T4OS R2E S13 RShO4 BT

A yellow pine 8 ins. in diam., bears S. $30\frac{1}{2}^{\circ}$ W., 46 lks. dist., mkd. T4OS R2E S14 RShO4 BT

A Douglas fir 10 ins. in diam., bears N. 31° W., 34 lks. dist., mkd. T4OS R2E S11 RShO4 BT

2275

TOWNSHIP 40 SOUTH, RANGE 2 EAST, WILLAMETTE MERIDIAN, OREGON

DEPENDENT RESURVEY

AND

SUBDIVISION

OF

SECTION 13

EXECUTED AT THE REQUEST OF J. H. BAXTER & CO.

OF

GRANTS PASS, OREGON

BY

Marvin C. Ramsey, Registered Professional Land Surveyor

Assistants

Paul E. Jonas
Floyd H. Brock

Survey commenced July 3, 1963

Survey completed July 22, 1963

