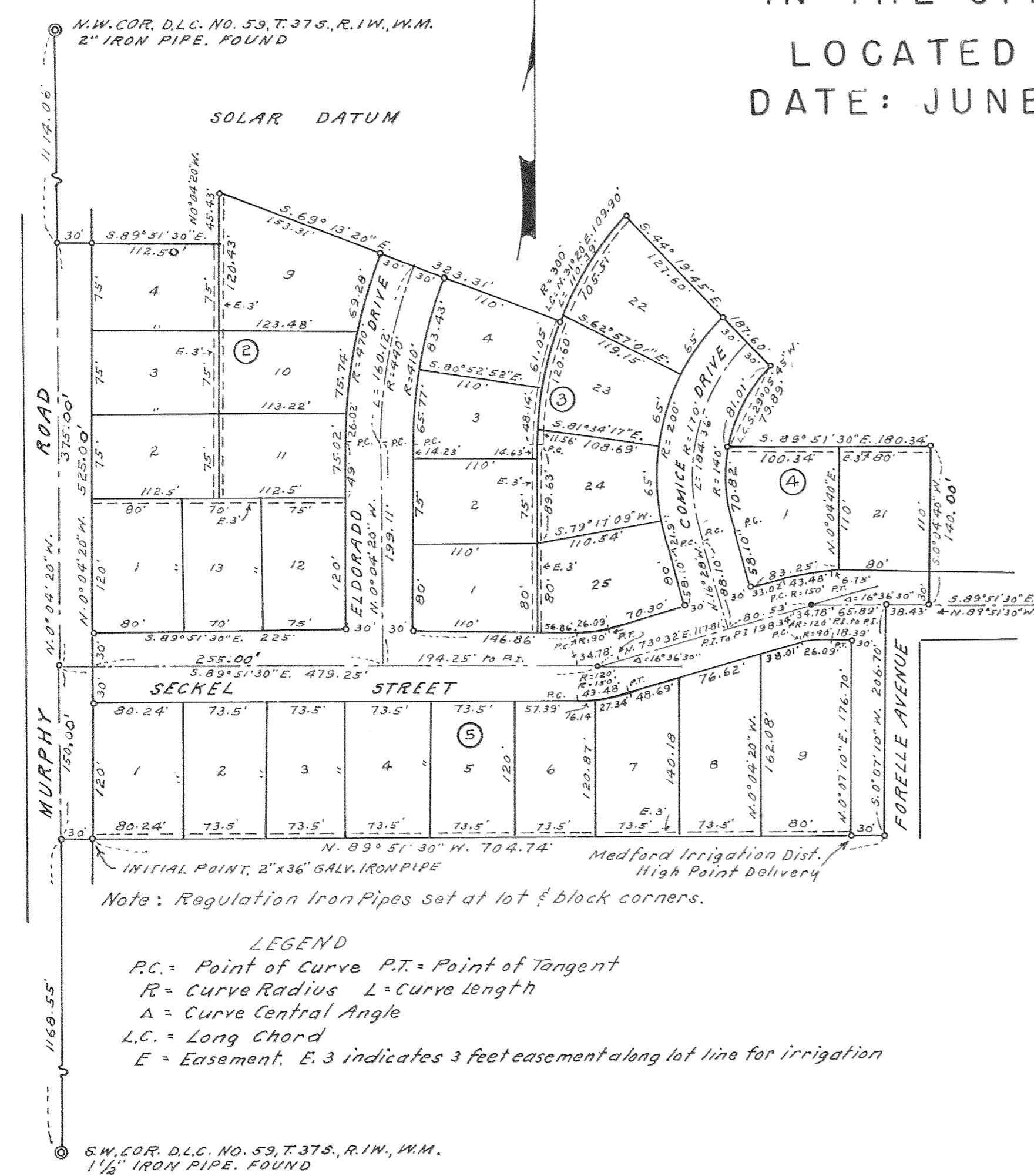


**SISKIYOU VILLAGE UNIT NO. 2**  
 IN THE CITY OF MEDFORD, JACKSON COUNTY, OREGON.  
 LOCATED IN D.L.C. NO. 59, T. 37 S., R. 1 W., W.M., OREGON.  
 DATE: JUNE 24, 1963 SCALE: 1" = 100'



Examined and approved by the City of Medford Planning Commission in regular session this 11<sup>th</sup> day of July 1963  
Ned M. Langford Secretary  
Donald B. Hedberg President

Examined and approved for the City of Medford this 2<sup>nd</sup> day of August 1963  
James Shupe City Engineer

Examined and approved by the Medford Irrigation District in regular session this 2<sup>nd</sup> day of July 1963  
J. A. Hoffmann Secretary  
Albert Hueneke President

Examined and approved this 7<sup>th</sup> day of August 1963  
Thad W. Hatten County Assessor

**DEDICATION**

KNOW ALL MEN BY THESE PRESENTS that we, William H. Leever, Margaret Ann Leever, Donald B. Whalin and Lois H. Whalin are the owners in fee simple of the lands hereon described and that we have subdivided the same into lots, blocks and streets as shown hereon, and the number and size of the lots and the length of all lines are plainly set forth, and that this plat is a correct representation of the said subdivision and we do hereby dedicate to the public for public use all streets and easements as shown hereon and we do hereby designate said subdivision as SISKIYOU VILLAGE UNIT NO. 2.

IN WITNESS WHEREOF we have set our hands and seals this 25<sup>th</sup> day of June 1963

Donald B. Whalin  
Lois H. Whalin  
William H. Leever  
Margaret Ann Leever

STATE OF OREGON }  
 County of Jackson }  
JUN 26 AD 1963

Personally appeared the above named William H. Leever, Margaret Ann Leever, Donald B. Whalin and Lois H. Whalin and acknowledged the foregoing instrument to be their voluntary act and deed. Before me

W. K. Macintosh  
 Notary Public for Oregon  
 My Commission expires the 22 day of AUGUST 1964

**SURVEYOR'S CERTIFICATE**

STATE OF OREGON }  
 County of Jackson }<sup>55</sup>

I, L.E. Ager, a duly registered Surveyor of the State of Oregon, being first duly sworn, do hereby certify that I have correctly surveyed and marked with the proper monuments as provided by law the tract of land hereon shown and the said plat is a correct representation of the same, and the following is an accurate description of the boundary lines:

Commencing at a point on the West line of Donation Land Claim No. 59, T. 37 S., R. 1 W. W.M., Jackson County, Oregon, which point bears N. 0° 04' 20" W. 1168.55 feet from the Southwest corner of said Claim; thence S. 89° 51' 30" E. 30.0 feet to a two inch iron pipe, the initial point of beginning; thence N. 0° 04' 20" W. parallel with the West line of said Claim, 525.0 feet; thence S. 89° 51' 30" E. 112.5 feet; thence N. 0° 04' 20" W. 45.43 feet; thence S. 69° 13' 20" E. 323.31 feet; thence on the arc of a 300 feet radius curve to the right, (the long chord of which bears N. 31° 20' E. 109.90 feet), a distance of 110.39 feet; thence S. 44° 19' 45" E. 187.60 feet; thence along the arc of an invert curve to the right, (the long chord of which bears S. 29° 05' 45" W. 79.89 feet) a distance of 81.01 feet, said curve having a radius of 140.0 feet; thence S. 89° 51' 30" E. 180.34 feet; thence S. 0° 04' 40" W. 140.0 feet; thence N. 89° 51' 30" W. 38.43 feet; thence S. 0° 07' 10" W. 206.70 feet; thence N. 89° 51' 30" W. 704.74 feet to the initial point of beginning.

L. E. Ager  
 Surveyor

All taxes paid in full to date this the 1 day of Aug. 1963

Donald Leight  
 County Sheriff

For Order of the County Court approving this plat see Volume \_\_\_\_\_ page \_\_\_\_\_ of the County Commissioner's Journal of Proceedings.

Emm J. Aedel  
 County Clerk

B4 Deputy

Subscribed and sworn to before me this 25<sup>th</sup> day of June 1963

Lorraine A. Osborn  
 Notary Public for Oregon  
 My Commission expires the 5<sup>th</sup> day of January 1964

I hereby certify that this tracing is an exact copy of the original plat filed with the County Clerk

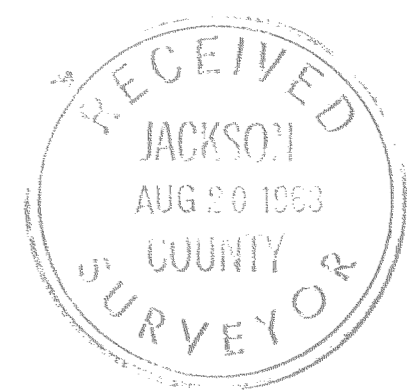
L. E. Ager  
 Surveyor

575558

Filed for record this the 9<sup>th</sup> day of August 1963 at 2:01 o'clock P.M. and recorded in Volume 9 of Plats at page 29 of Records of Jackson County

Emm J. Aedel  
 County Clerk

B4 Deputy



Survey narrative to comply with ONS 209.250

For: Wm. Leever and Donald Whalin, Medford, Oregon

Purpose: Subdivision: Siskiyou Village Unit No. 2

Procedure: Units No's 1 and 2 had been combined as Unit Unit 1 and later divided into 2 units excepting therefrom 4 lots between the present Units 1 and 2 adjacent to a creek dividing these units.

This subdivision being a portion of Lots 9 and 10 of Crestbrook Orchard Tracts.

The boundaries of the said lots 9 and 10 or fraction thereof owned by Leever and Whalin had been previously marked with 5/8" iron rods by previous surveys excepting the points along the Southerly line, which points I established by this survey, and I have subdivided Unit No. 2 according to the bearings and distances appearing on the subdivision map.

