

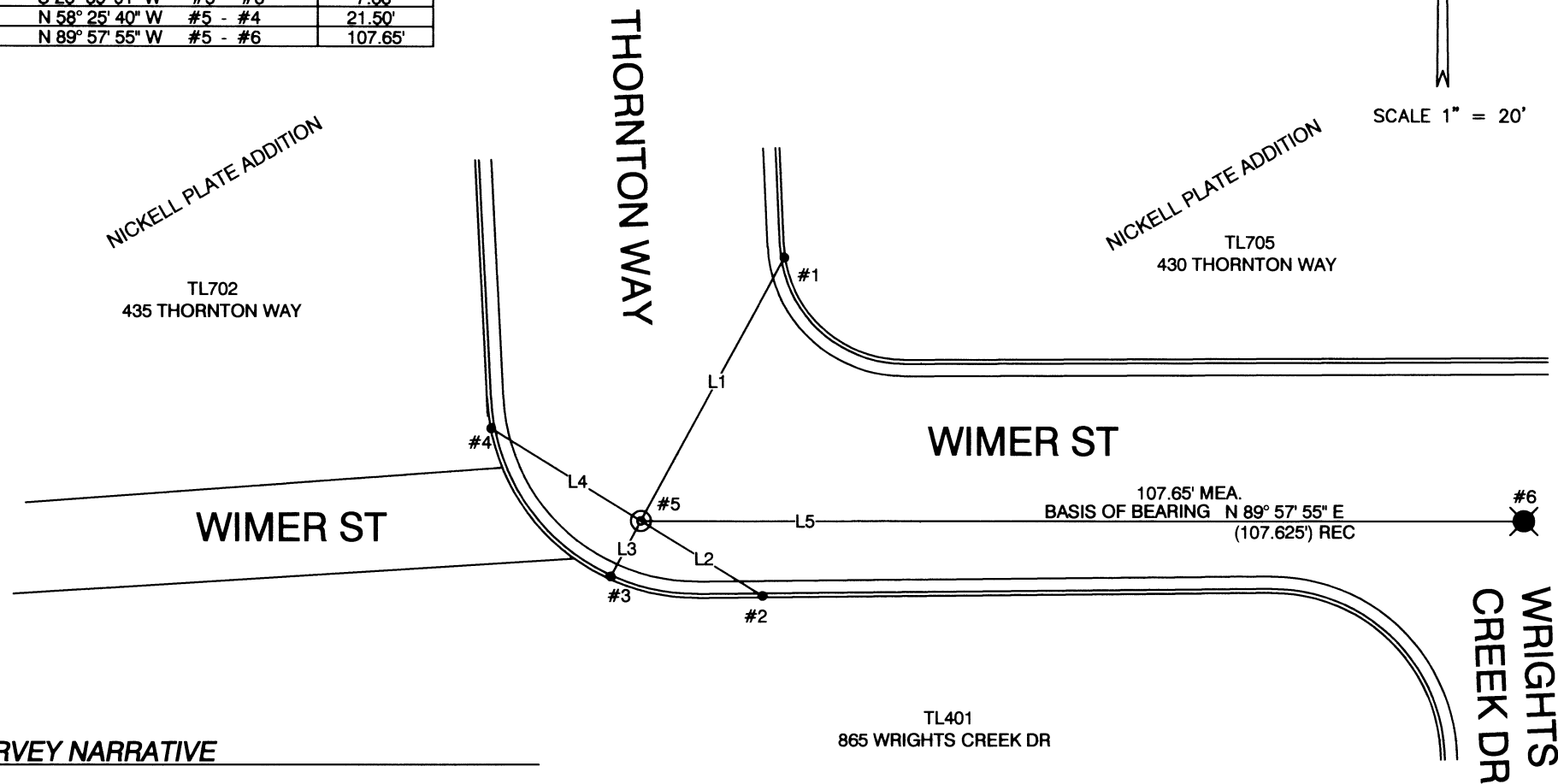
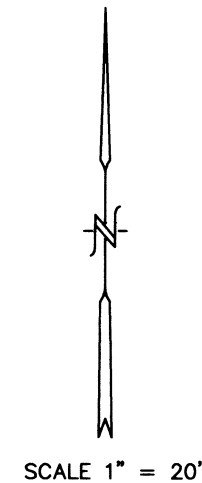
MAP OF SURVEY

FOR
 CITY OF ASHLAND, ENGINEERING DIVISION
 20 EAST MAIN STREET, ASHLAND, OREGON 97520

LOCATED IN
 THE SW 1/4 OF SECTION 5
 TOWNSHIP 39 SOUTH, RANGE 1 EAST, WILLAMETTE MERIDIAN,
 CITY OF ASHLAND, JACKSON COUNTY, OREGON

LINE TABLE

LINE	BEARING - MON. # TO RP #	DISTANCE
L1	N 28° 39' 01" E #5 - #1	36.52'
L2	S 58° 25' 40" E #5 - #2	17.40'
L3	S 28° 39' 01" W #5 - #3	7.68'
L4	N 58° 25' 40" W #5 - #4	21.50'
L5	N 89° 57' 55" W #5 - #6	107.65'



LEGEND

- REFERENCE POINT (RP) ; SET LEAD PLUG IN 1/4" DRILL HOLE WITH TACK AND BRASS TAG MARKED "CITY OF ASHLAND" IN TOP OF CURB.
- ⊙ FOUND ALUMINUM CAP FLUSH PER S/N 10634, REPLACED WITH 5/8" X 30" REBAR W/ 2" DIAMETER BRONZE CAP WITH PUNCH MARK STAMPED " CITY OF ASHLAND SURVEY MARKER" 1/4" BELOW SURFACE.
- ⊙ FOUND 3" BRASS CAP WITH DRILL HOLE STAMPED "CITY OF ASHLAND, GPS 525, 1997, SURVEY MARKER" IN MONUMENT CASE PER S/N 15476

NOTES

1. ALL SET MONUMENTS ARE AT THE INTERSECTION OF REFERENCE POINTS.

SURVEY NARRATIVE

TO COMPLY WITH ORS 209.140, AND ORS 209.250

PURPOSE: TO REFERENCE EXISTING CENTERLINE MONUMENT(S) PRIOR TO CONSTRUCTION ACTIVITIES AND TO REPLACE THE MONUMENT(S) AFTER CONSTRUCTION ACTIVITIES ARE COMPLETED.

BASIS OF BEARING: CENTERLINE OF WIMER STREET PER S/N 10634

PROCEDURE: SET LEAD PLUG AND TACK WITH TAG IN 1/4" DRILL HOLE IN TOPS OF CURB MARKED "CITY OF ASHLAND" ON TWO QUADRANTS OF INTERSECTION. OCCUPIED EACH LEAD AND TACK AND SET OPPOSING LEAD AND TACK BY EXTENDING LINE FROM MONUMENT TO TOP OF CURB. REFERENCE POINTS WERE ESTABLISHED SO THAT STRAIGHT LINES FROM OPPOSING REFERENCE MARKS ARE THE MONUMENT LOCATION. THE ALUMINUM CAP WAS REPLACED FOR POINT #5 DUE TO DISTURBANCE DURING CONSTRUCTION BY OCCUPYING RP'S SET PRIOR TO CONSTRUCTION AND INTERSECTING THE LINES PRODUCED FROM THE RP'S, JUNE 2, 2017. INSTRUMENT NIKON DTM-322 TOTAL STATION.

DATE: 06-12-2018

39-1E-05C

REGISTERED
 PROFESSIONAL
 LAND SURVEYOR

Bradley F. Barber

OREGON
 MARCH 18, 1997
 BRADLEY F. BARBER
 02806PLS

EXPIRES 12-31-2017

RECEIVED
 DATE 6/12/18 BY PB
 This survey consists of:
 1 sheet(s) Map
 0 pages(s) Narrative
 JACKSON COUNTY
 SURVEYOR

FILE H:\WIMER SV MAP.DWG

CITY OF ASHLAND 20 E. MAIN STREET ASHLAND, OREGON			
DRAWN BY <i>BFB</i>	DATE <i>06-12-2018</i>	PREPARER'S JOB NO.	
REVIEWED BY <i>SF</i>	DATE <i>06-12-2018</i>	AGENCY JOB NO.	
REVIEWED BY <i>KJ</i>	DATE <i>06-12-2018</i>	DRAWING NO.	
PUBLIC WORKS ENGINEERING www.ashland.or.us 541-488-5587 fax 488-6006			1 OF 1