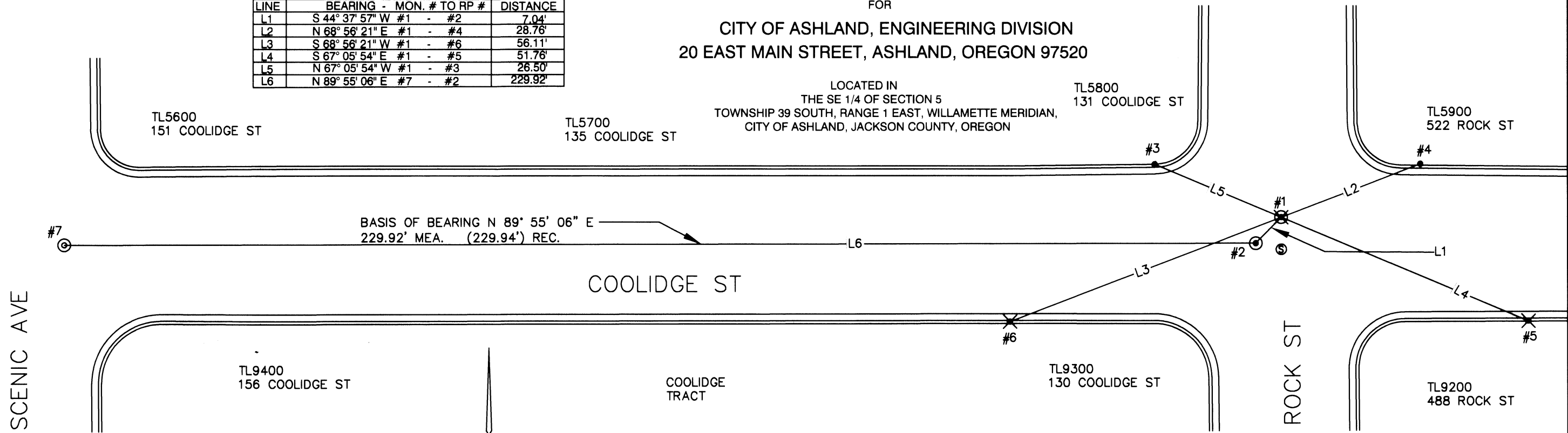


MAP OF SURVEY

FOR
 CITY OF ASHLAND, ENGINEERING DIVISION
 20 EAST MAIN STREET, ASHLAND, OREGON 97520

LOCATED IN
 THE SE 1/4 OF SECTION 5
 TOWNSHIP 39 SOUTH, RANGE 1 EAST, WILLAMETTE MERIDIAN,
 CITY OF ASHLAND, JACKSON COUNTY, OREGON

LINE	BEARING - MON. # TO RP #	DISTANCE
L1	S 44° 37' 57" W #1 - #2	7.04'
L2	N 68° 56' 21" E #1 - #4	28.76'
L3	S 68° 56' 21" W #1 - #6	56.11'
L4	S 67° 05' 54" E #1 - #5	51.76'
L5	N 67° 05' 54" W #1 - #3	26.50'
L6	N 89° 55' 06" E #7 - #2	229.92'



BASIS OF BEARING N 89° 55' 06" E
 229.92' MEA. (229.94') REC.

SURVEY NARRATIVE

TO COMPLY WITH ORS 209.140, AND ORS 209.250

PURPOSE: TO REFERENCE EXISTING CENTERLINE MONUMENT(S) PRIOR TO CONSTRUCTION ACTIVITIES AND TO REPLACE THE MONUMENT(S) AFTER CONSTRUCTION ACTIVITIES ARE COMPLETED.

BASIS OF BEARING: CENTERLINE OF COOLIDGE STREET PER S/N 21113

PROCEDURE: FOUND LEAD PLUG AND TACK WITH BRASS TAG IN TOP OF CURB ON TWO QUADRANTS OF INTERSECTION. SET LEAD PLUG AND TACK WITH BRASS TAG IN TOP OF CURB ON TWO QUADRANTS OF INTERSECTION. OCCUPIED ONE LEAD AND TACK AND TIED ALL REFERENCE POINTS AND MONUMENTS. REFERENCE POINTS WERE PREVIOUSLY ESTABLISHED SO THAT STRAIGHT LINES FROM OPPOSING REFERENCE MARKS ARE THE MONUMENT LOCATION WERE VERIFIED. THE BRASS CAP WAS REPLACED FOR POINT #1 DUE TO DISTURBANCE DURING CONSTRUCTION BY OCCUPYING RP'S SET PRIOR TO CONSTRUCTION AND INTERSECTING THE LINES PRODUCED FROM THE RP'S, FEBRUARY 12, 2018. INSTRUMENT NIKON DTM-322 TOTAL STATION.

DATE: 06-12-2018

SCALE 1" = 20'

LEGEND

- REFERENCE POINT (RP) ; FOUND LEAD PLUG IN 3/16" DRILL HOLE WITH TACK IN TOP OF CURB PER S/N 20995.
- ✕ REFERENCE POINT (RP) ; SET LEAD PLUG IN 1/4" DRILL HOLE WITH TACK AND BRASS TAG MARKED "CITY OF ASHLAND" IN TOP OF CURB
- ⊙ FOUND 3" BRASS DISC STAMPED "PLS 2653" PER S/N 21113
- ⊙ FOUND 3" BRASS DISC STAMPED "PLS 2464" PER S/N 21113.
- ⊙ FOUND 3" BRASS DISC STAMPED "PLS 2464" PER S/N 21113. REPLACED #1 WITH 5/8" X 30" REBAR AND 2" BRONZE CAP STAMPED "CITY OF ASHLAND SURVEY MARKER" 1/4" BELOW SURFACE
- ⊙ SEWER MANHOLE

NOTES

1. ALL SET MONUMENTS ARE AT THE INTERSECTION OF REFERENCE POINTS.

* * RECEIVED * *
 DATE 6/12/18 BY PB
 This survey consists of:
1 sheet(s) Map
8 pages(s) Narrative
 JACKSON COUNTY
 SURVEYOR

REGISTERED
 PROFESSIONAL
 LAND SURVEYOR

Bradley F. Barber

OREGON
 MARCH 18, 1997
 BRADLEY F. BARBER
 02806PLS
 EXPIRES 12-31-2019

FILE C:\LIBRARIES\DOCUMENTS\AUTODESK\COOLROCK.DWG

CITY OF ASHLAND 20 E. MAIN STREET ASHLAND, OREGON		
DRAWN BY <i>KG</i>	DATE <i>06-12-2018</i>	PREPARER'S JOB NO.
REVIEWED BY <i>BFB</i>	DATE <i>06-12-2018</i>	
REVIEWED BY <i>KJ</i>	DATE <i>06-12-2018</i>	AGENCY JOB NO.
REVIEWED BY <i>SF</i>	DATE <i>06-12-2018</i>	
PUBLIC WORKS ENGINEERING www.ashland.or.us 541-488-5587 fax 488-6006		DRAWING NO. 1 OF 1