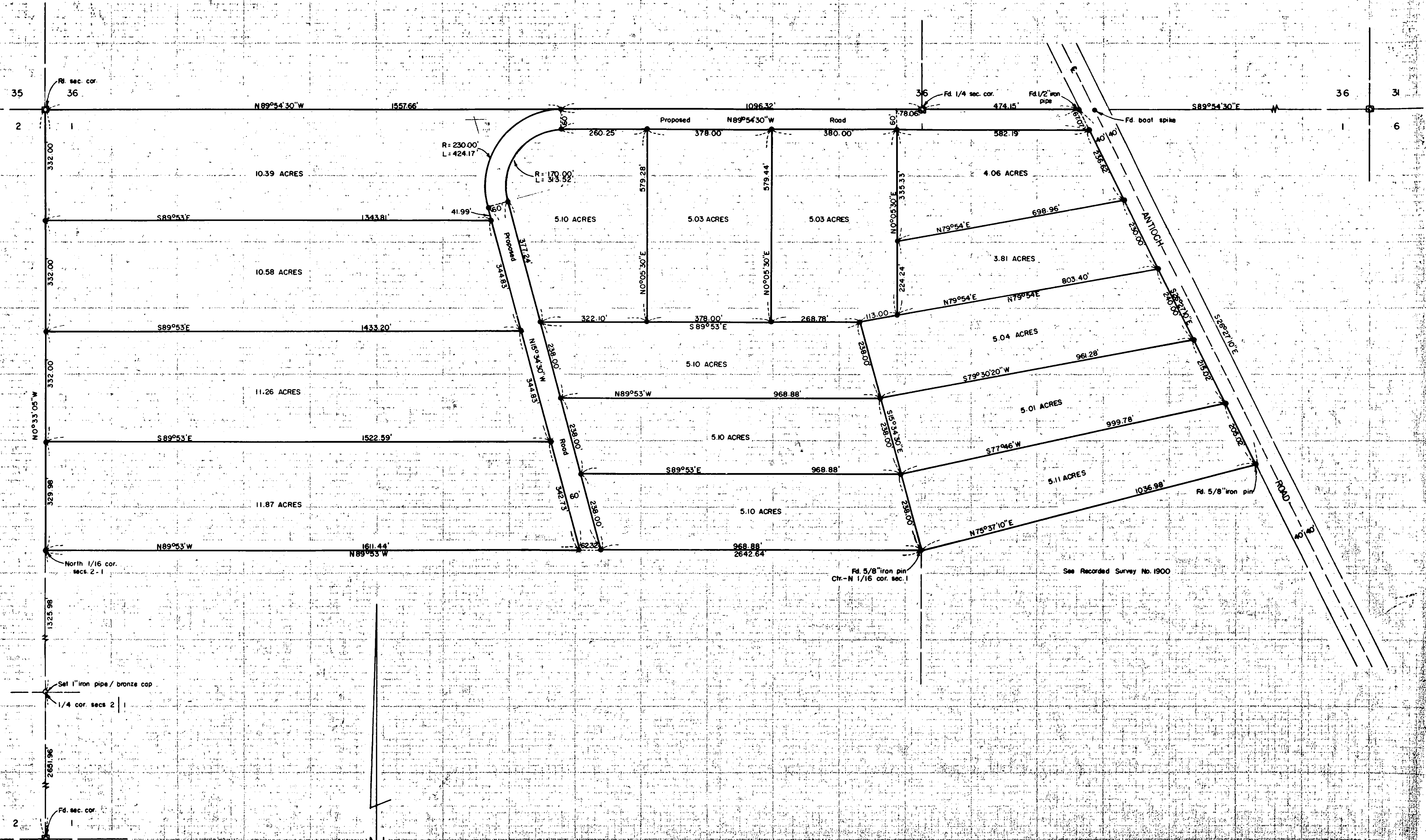


Survey For:
 FAYDREX, INC.
 Located in Sec. 1, T.36S, R.2W, W.M.
 By: Mark E. Boyden
 April, 1963.

2248



Rt. sec. cor.
36

35

2

1

1

1

1

1

1

1

1

1

1

1

1

1

1

11

12

1

1

1

1

1

1

1

1

1

1

1

1

1

1

1

1

1

1

1

1

1

1

1

1

1

1

1

1

1

1

1

1

1

1

1

1

1

1

1

1

1

1

1

1

1

1

1

1

1

1

1

1

1

1

1

1

1

1

1

1

1

1

1

1

1

1

1

1

1

1

1

1

1

1

1

1

1

1

1

1

1

1

1

1

1

1

1

1

1

1

1

1

1

1

1

1

1

1

1

1

1

1

1

1

1

1

1

1

1

1

1

1

1

1

1

1

1

1

1

1

1

1

1

1

1

1

1

1

1

1

1

1

1

1

1

1

1

1

1

1

1

1

1

1

1

1

1

1

1

1

1

1

1

1

1

1

1

1

1

1

1

1

1

1

1

1

1

1

1

1

1

1

1

1

1

1

1

1

1

1

1

1

1

1

1

1

1

1

1

1

1

1

1

1

1

1

1

1

1

1

1

1

1

1

1

1

1

1

1

1

1

1

1

1

1

1

1

1

1

1

1

1

1

1

1

1

1

1

1

1

1

1

1

1

1

1

1

1

1

1

1

1

1

1

1

1

1

1

1

1

1

1

1

1

1

1

1

1

1

1

1

1

1

1

1

1

1

1

1

1

1

1

1

1

1

1

1

1

1

1

1

1

1

1

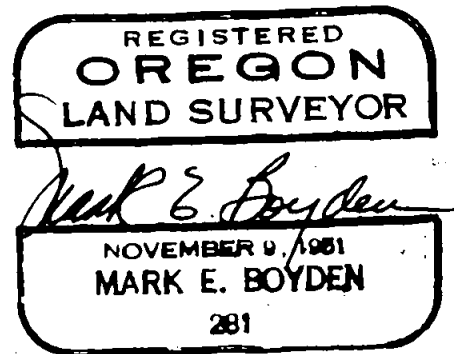
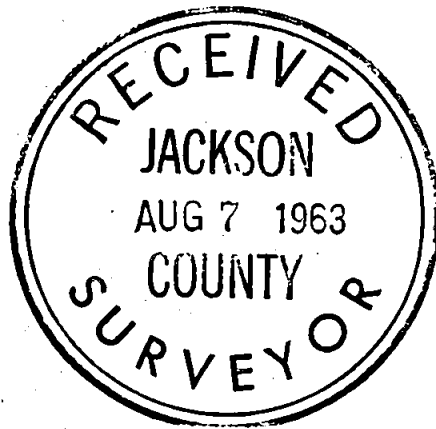
1

one-sixteenth Section Corner of Section 1 as set on
Recorded Survey No. 1900, was considered inconsequential.

From said basic data, monumented the tracts as shown.

It will be noted, that proportional chainage
differences were encountered with this survey, when
comparing same with Recorded Survey No. 1900.

May 1963



SURVEY NARRATIVE TO COMPLY WITH O.R.S. 209.250

FOR: Faydrex, Inc.
843 E. Main St.
Medford, Oregon

LOCATION: North-half of the North-half of Section 1,
Township 36 South, Range 2 West, Willamette
Meridian.

PURPOSE: To monument and describe 15 lots and a new
roadway within the North-half of the North-half
of said Section 1, lying Southwesterly from
Antioch Road, excepting that tract described
in Volume 530, Page 18 of the Deed Records
of Jackson County, Oregon.

PROCEDURE:

Enclosed the outside boundaries of said tract by
transit-chain random traverse.

A tie to the first renewal monument set for the
1/4 corner common to Sections 1 and 2 indicated a gross
error with the previous protraction survey of Section 1.
Therefore, the random traverse was continued Southerly
to the concrete monument found for the Southwest
corner of said Section 1.

According to the original intent of the first
renewal of the quarter corner common to Sections 1 and 2,
a new corner location was established (see correction
renewal for this corner filed in the Government corner
re-establishment volume on file in the office of the County
Surveyor).

Concrete monuments found for the Northwest and
Southwest corners of Section 1 agreed favorably with the
corner references as established by the Deputy County
Surveyor in 1942.

In that the measurement between the Northwest and
Southwest corners of Section 1 was nearly identical
with the protraction survey of Section 1 in 1942,
the minor difference developed at the Center-North