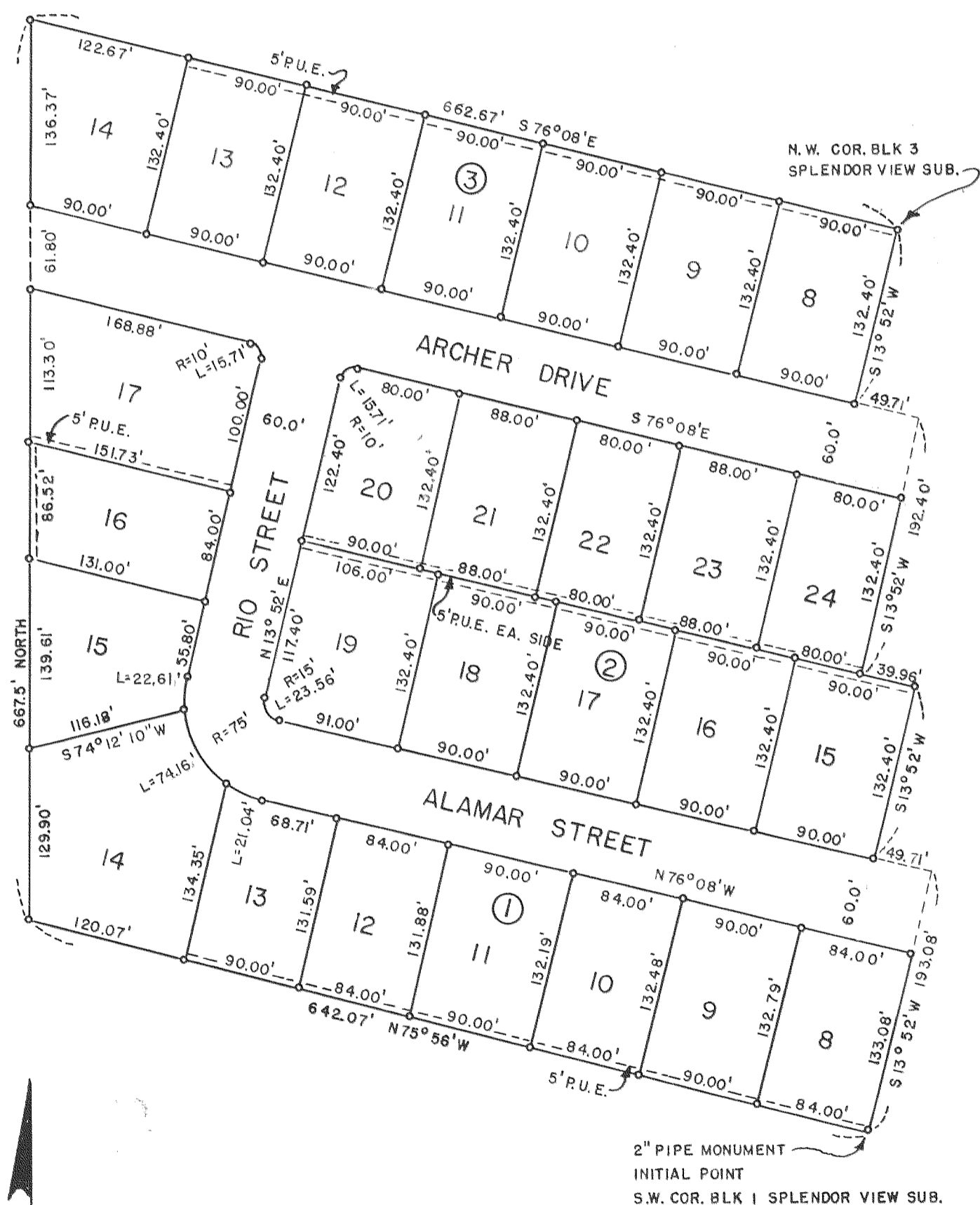


# SPLENDOR VIEW SUBDIVISION EXTENSION NO 1

LOCATED IN SECTION 2, T.38S.,R.2 W.W.M.

JACKSON COUNTY, OREGON

SCALE: 1"=100'



## DEDICATION

KNOW ALL MEN BY THESE PRESENT THAT we Ross Adams, Lois Adams, Dee P Hord and Elma Hord, are the owners in fee simple of the lands hereon described, that we have subdivided the same into lots, blocks and streets as shown hereon, and the number and size of the lots and lengths of all lines are plainly set forth, and that this plat is a correct representation of the said subdivision, and we do hereby dedicate to the public for public use all streets and easements for public utilities, shown hereon, and we do hereby designate said subdivision as: SPLENDOR VIEW SUBDIVISION EXTENSION NO 1.

IN WITNESS WHERE OF, we have hereunto set our hands and seals this 2 day of May, 1963

Ross Adams  
Lois Adams

Dee P Hord  
Elma Hord

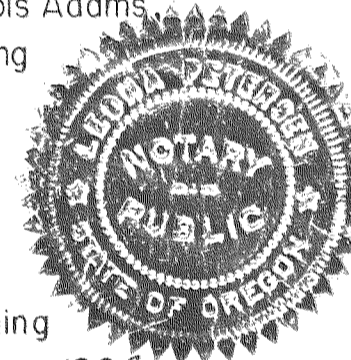
STATE OF OREGON } s.s.  
County of Jackson

May 2 A.D. 1963

Personally appeared the above named, Ross Adams, Lois Adams, Dee P Hord and Elma Hord and acknowledged the foregoing instrument to be their voluntary act and deed before me:

Leona Peterson  
Notary Public for Oregon

My commission expires the 3 day of June, 1963



Examined and approved by the Jackson County Planning Commission in regular session this the 10 day of July, 1963

Donald T. Latham  
Secretary

C. J. Johnson  
President

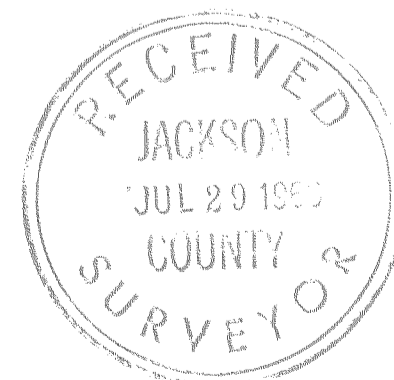
Examined and recommended for approval of the County Court this the 21<sup>st</sup> day of June, 1963.

Mark E. Boyler  
County Surveyor

Note: 5/8" steel pins at all block corners and 1/2" steel pins at all lot corners.

I hereby certify that this tracing is an exact copy of the original plat filed with the County Clerk

Hugh C. Ingle  
Engineer



## ENGINEERS CERTIFICATE

STATE OF OREGON } s.s.  
County of Jackson

I, Hugh C. Ingle, a duly registered engineer of the State of Oregon, being first duly sworn, do hereby certify that I have correctly surveyed and marked with proper monuments as provided by law the tract of land hereon shown, and the said plat is a correct representation of the same, and the following is an accurate description of the boundary lines: Beginning at a 2" diameter pipe marking the initial point and being the Southwest corner of Block 1 of Splendor View, a subdivision now of record in Jackson County, Oregon, said point being 2,357.38 feet North and 665.15 feet West of the Southeast corner of Donation Land Claim No 40 in Township 38 South, Range 2 West of Willamette Meridian, in said Jackson County; running thence N 75° 56' W 642.07' feet; thence North 667.50 feet; thence S 76° 08' E 662.67' feet to the Northwest corner of Block 3 of said Splendor View Subdivision; thence S 13° 52' W 132.40' feet; thence S 76° 08' E 49.71' feet; thence S 13° 52' W 192.40' feet; thence S 76° 08' E 39.96' feet; thence S 13° 52' W 132.40' feet; thence S 76° 08' E 49.71' feet; thence S 13° 52' W 193.08' feet to the Initial Point.

Hugh C. Ingle  
Engineer

Subscribed and sworn to before me this 23 day of April, 1963.

Stewart Dow  
Notary Public for Oregon

My commission expires the 7<sup>th</sup> day of October, 1963

Examined and approved this 14 day of May, 1963.

Shad W. Hatten  
County Assessor

All taxes paid in full to this date this the 4 day of May, 1963

W. Edward Wright  
County Sheriff

573257

Filed for record this 15<sup>th</sup> day of July, 1963, at 12:44 o'clock P.M. and recorded in 9 Volume of plats at Page 27 of records of Jackson County, Oregon.

Emm Rael  
County Clerk

For order of the County Court approving this plat see Volume     , Page      of County Commissioners' Journal of Proceedings.

Emm Rael  
County Clerk

2242

April 22, 1963

SURVEY NARRATIVE TO COMPLY WITH PARAGRAPH 289.350  
OREGON REVISED STATUTES

FOR: Mr. Ross Adams

PURPOSE:

To establish boundaries and Block and Lot corners of a sub-division of land to be known as Splendor View Subdivision, Extension No.1. and furnish necessary plats for record.

PROCEDURE:

The northerly and southerly side lines of Subdivision named and recorded as Splendor View were projected Westward to the West line of the Ross Adams property of record, and proper corners established. Corresponding bearings were used.

Ties to the Initial Point from the Southeast corner of D.L.C. # 40 T. 38 S. R. 2 W. of W.M., as used in the Splendor View Subdivision, were extended on the south line and description made in accordance.

