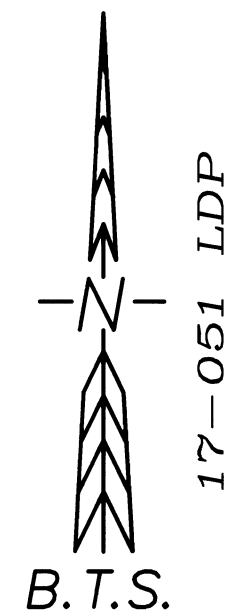
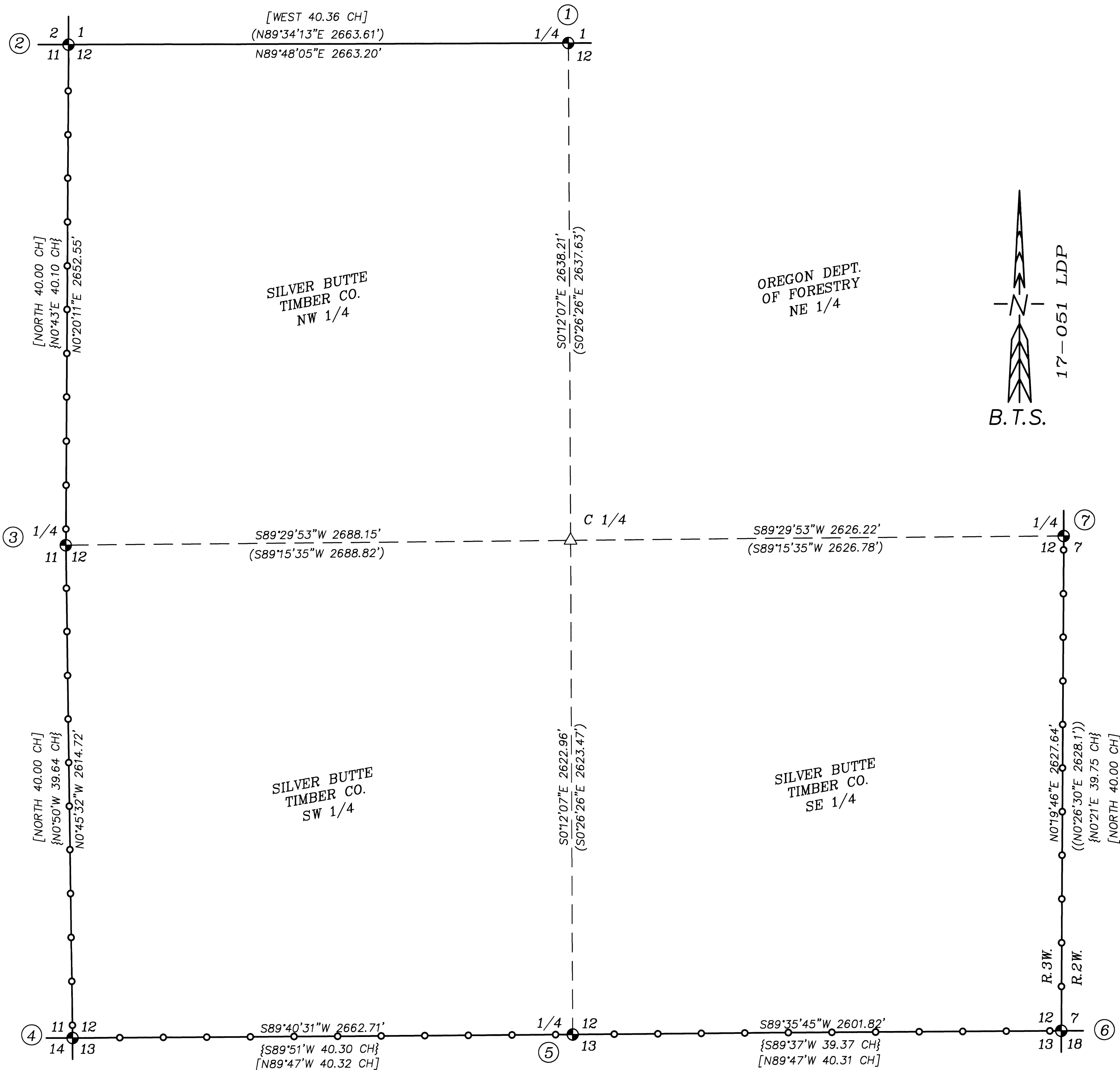
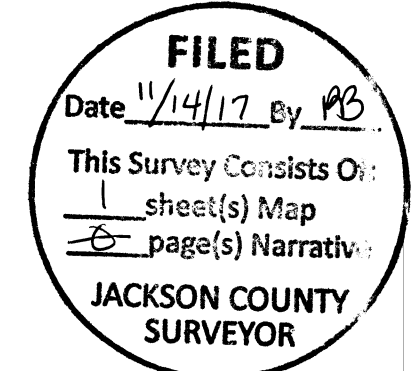


MAP OF SURVEY

LOCATED IN
SECTION 12, T.33S., R.3W., W.M.
JACKSON COUNTY, OREGON



NARRATIVE:

THE PURPOSE OF THIS SURVEY IS TO POST AND BLAZE THE WEST, SOUTH, AND THE SOUTH 1/2 OF THE EAST LINE OF SECTION 12, T.33S., R.3W., W.M.

THE NW SECTION CORNER OF SECTION 12, THE 1/4 CORNER OF SECTIONS 11 & 12, AND THE 1/4 CORNER OF SECTIONS 12 & 13 ARE FOUND AS REMONUMENTED IN THEIR ORIGINAL POSITIONS, AND THE SE & SW SECTION CORNERS OF SECTION 12 AS MONUMENTED IN THEIR PROPORTIONED POSITIONS BY THE USBLM UNDER THE 1958 DEPENDENT RESURVEY BY HANS THIELSEN. THE 1/4 CORNER OF SECTIONS 1 & 12 IS FOUND IN ITS PROPORTIONATE POSITION AS MONUMENTED BY LLOYD SMITH IN 1982 PER SURVEY NO. 9442. THE 1/4 CORNER OF SECTIONS 12 & 7 IS FOUND A REMONUMENTED IN ITS PROPORTIONED POSITION BY JACKSON COUNTY SURVEYOR'S OFFICE IN 2009.

THE 1981 USBLM ADMINISTRATIVE SURVEY NO. 42 BY G.L. CASTER SURVEYED AND MARKED THE EAST BOUNDARY OF SECTION 12. I FOUND 4 USBLM CARSONITE POSTS BETWEEN 0.4 FEET WEST AND 0.8 FEET EAST OF THE SECTION LINE.

I ACCEPT ALL CORNERS IN THEIR MONUMENTED POSITIONS, AND POST THE BOUNDARY LINE WITH 5 1/2" STEEL POSTS, SET INTERVISIBLE AT NO MORE THAN 2250 INTERVALS. THE TRUE BOUNDARY LINE IS BRUSHED, AND TREES ARE BLAZED ON BOTH SIDES OF THE LINE WITHIN 3-5 FEET OF LINE. THE BLAZED ARE PAINTED RED.

THIS SURVEY WAS PERFORMED BY ADAM DEGROOT, ALEX HOLLAND, RYLAND PARAZOO, & DANNY KOBERSTEIN USING LEICA SYSTEM 1200 GPS RECEIVERS AND A LEICA TCPR 1203 TOTAL STATION WITH COMPUTATIONS AND DRAFTING BY ADAM DEGROOT.

SURVEY PROCEDURE:

A STATIC GPS SURVEY WAS PERFORMED TO PROJECT CONTROL POINTS HOLDING THE PUBLISHED POSITIONS OF ODOT ORGN STATIONS GPTS & PSP.T. THE PROCESSED AND ADJUSTED PROJECT CONTROL POINTS WERE THEN PROJECTED ONTO A LOCAL TRANSVERSE MERCATOR PROJECTION AS FOLLOWS.

REFERENCE DATUM:	NAD 83 (2011)(EPOCH 2010.00)
PROJECTION:	TRANSVERSE MERCATOR (TM)
NAME:	17-051 LDP
LATITUDE OF ORIGIN:	42°41'00"N
CENTRAL MERIDIAN:	123°00'00"W
ZONE WIDTH:	2°00'00"
ORIGIN SCALE FACTOR:	1.000191
FALSE NORTHING:	100,000.00 ft
FALSE EASTING:	250,000.00 ft

CONVENTIONAL TRAVERSE LOOPS WERE RUN ALONG ALL LINES POSTED, AND ADJUSTED IN LEICA GEO OFFICE BY THE METHOD OF LEAST SQUARES.

GEODETIC COORDINATES:

GCDB NO.	LATITUDE	LONGITUDE
600500	42°42'32.89069"N	123°00'51.63779"W
600540	42°42'58.71068"N	123°00'52.10752"W
600600	42°43'24.90623"N	123°00'51.90504"W
640500	42°42'33.04261"N	123°00'15.98147"W
640600	42°43'25.00036"N	123°00'16.23349"W
700500	42°42'33.22375"N	122°59'41.14065"W
700540	42°42'59.17326"N	122°59'40.93604"W

CORNER DESCRIPTIONS:

ALL NEW BEARING TREES HAVE DOUBLE BLAZED FACES WITH A 1" BRASS WASHER STAMPED "DEGROOT PLS89398" NAILED INTO THE LOWER BLAZE. BEARINGS ARE TAKEN TO THE CENTER OF THE TREE AT THE ROOT CROWN AND DISTANCES ARE MEASURED TO A NAIL IN THE ROOT CROWN AT THE SIDE AND CENTER OF THE TREE WITH A TOTAL STATION. ALL BEARING TREES HAVE A 6" RED BAND PAINTED AROUND THE TREE AND THE BLAZED FACE PAINTED RED AND BEARING TREE SIGNS NAILED TO THE TREE.

1. 1/4 S1/S12 GCDB 640600 PROPORTIONED CORNER
FOUND A 1 1/2" ALUM. POST BY LLOYD SMITH IN 1982 PER SURVEY NO. 9442, FIRMLY SET AND BURIED 24" BY OLD CAT ROAD, WITH AN OREGON DEPT. OF FORESTRY 3 3/4" ALUM. CAP MKD.

T33S R3W
S1
1/4 S12
1982
RS1101

FROM WHICH THE REMAINS OF THE 1982 ODF BEARING TREES:
A 22" ROTTED FIR STUMP BEARS RECORD N.55°E., 44.3 FT, W/SCRIBE MKS. "S1 BT" ON DETACHED FACE
A 16" FIR HIGH STUMP BEARS RECORD S.45°E., 44.1 FT, W/SCRIBE MKS. "1/4 S12 BT" ON PARTIALLY HEALED BLAZE

I EXCAVATE THE MONUMENT AND FLATTEN A PAD AROUND THE CORNER, TOP NOW PROJECTS 2" ABOVE GROUND. I RESET THE 4"x 4" WHITE CEDAR POST NEAR CORNER.

2. S1/S2/S11/S12 GCDB 600600 ORIGINAL CORNER
FOUND A 2 1/2" USBLM IRON POST BY H.THIELSEN IN 1958, FIRMLY SET & PROJECTING 6" ABOVE GROUND, WITH A PROPERLY MKD. 3 1/4" BRASS CAP PER THE RECORD, AND ACCESSORIES PER THE 2010 JCSO CORNER RENEWAL.

3. 1/4 S11/S12 GCDB 600540 ORIGINAL CORNER
FOUND A 2 1/2" USBLM IRON POST BY H.THIELSEN IN 1958, FIRMLY SET & PROJECTING 8" ABOVE GROUND, WITH A PROPERLY MKD. 3 1/4" BRASS CAP PER THE RECORD.

FROM WHICH THE 1958 BLM BEARING TREES:
A 42" D.FIR STUMP BEARS N.72°37'E., 54.73 FT W/ SCRIBE MKS. "1/4 S12 BT" VISIBLE ON OPEN ROTTING BLAZE. I SET MAG-HUB & BRASS WASHER IN CTR OF STUMP. {N.73°30'E., 86 LKS}
A 59" CEDAR BEARS S.9°30'W., 65.6 FT W/ HEALED SINGLE BLAZE {S.9°30'W., 100 LKS}
AND NEW BEARING TREES:
A 11" D.FIR BEARS S.88°45'E., 18.7 FT SCRIBED "1/4 S12 BT" ON DBL BLAZE
A 5/8" X 30" IRON ROD W/PC "BTS ENG-SURV" BEARS N.6°50'55"E., 26.46 FT
A 5/8" X 30" IRON ROD W/PC "BTS ENG-SURV" BEARS N.88°44'16"W., 22.59 FT

4. S11/S12/S13/S14 GCDB 600500 PROPORTIONED CORNER
FOUND A 2 1/2" USBLM IRON POST BY H.THIELSEN IN 1958, FIRMLY SET & PROJECTING 6" ABOVE GROUND, WITH A PROPERLY MKD. 3 1/4" BRASS CAP PER THE RECORD.

FROM WHICH THE 1958 BEARING TREES:
A 26" D.FIR BEARS N.26°E., 41.3 FT W/ HEALED BLAZE {N.26°E., 62 LKS}
A 39" x 4" TALL FIR STUMP BEARS S.75°E., 17.0 FT W/HEALED BLAZE & TIN CAP {S.77°E., 27 LKS}
A 18" P.PINE STUMP BEARS S.49°21'W., 68.84 FT - NO MKS VISIBLE - SET MAGHUB & BRASS WASHER IN CTR OF STUMP {S.49°W., 109 LKS}
A 14" HEMLOCK BEARS N.37°W., 29.8 FT W/ HEALED BLAZE {N.37°W., 45 LKS}
AND NEW BEARING TREES:
A 15" CEDAR BEARS S.6°45'E., 19.6 FT SCRIBED "T33S R3W S13 BT" ON DBL BLAZE
A 12" D.FIR BEARS S.62°15'W., 32.2 FT SCRIBED "T33S R3W S14 BT" ON DBL BLAZE

5. 1/4 S12/S13 GCDB 640500 ORIGINAL CORNER
FOUND A 2 1/2" USBLM IRON POST BY H.THIELSEN IN 1958, FIRMLY SET & PROJECTING 6" ABOVE GROUND IN A 12" STONE COLLAR, WITH A PROPERLY MKD. 3 1/4" BRASS CAP PER THE RECORD.

FROM WHICH THE 1958 BEARING TREES:
A 12" ROTTED HEMLOCK STUMP BEARS RECORD N.32°W., 104 LKS W/ NO MKS VISIBLE
A 41" D.FIR BEARS S.36°15'W., 22.9 FT W/ HEALED BLAZE {S.35°W., 35 LKS}
AND AN UN-RECORDED BEARING TREE:
A 48" D.FIR STUMP BEARS N.38°24'E., 25.33 FT W/ HEALED BLAZE & K-TAG - SET ALUM NAIL & BRASS WASHER IN CTR OF STUMP
AND NEW BEARING TREES:
A 15" CHINQUAPIN BEARS S.62°45'E., 10.0 FT SCRIBED "1/4 S13 BT" ON DBL BLAZE
A 15" D.FIR BEARS N.87°15'W., 38.7 FT SCRIBED "1/4 S12 BT" ON DBL BLAZE

6. S7/S12/S13/S18 GCDB 700500 PROPORTIONED CORNER
FOUND A 2 1/2" USBLM IRON POST BY H.THIELSEN IN 1958, FIRMLY SET & PROJECTING 4" ABOVE GROUND, LEANING SLIGHTLY SOUTHEASTERLY, WITH A PROPERLY MKD. 3 1/4" BRASS CAP PER THE RECORD, WHICH IS ORIENTED EAST.

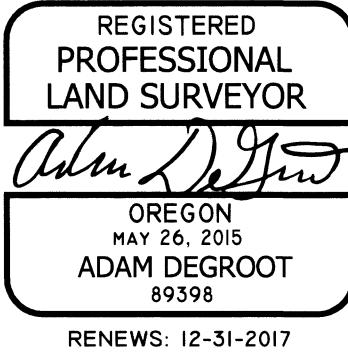
FROM WHICH THE 1958 BEARING TREES:
A 32" W.FIR BEARS S.68°30'E., 112.8 FT W/ HEALED SINGLE BLAZE {S.67°30'E., 170 LKS}
A 31" W.FIR BEARS S.47°45'W., 97.4 FT W/ HEALED SINGLE BLAZE {S.46°W., 148 LKS}
A 32" TRIPLE TRUNK MADRONE BEARS N.33°W., 48.5 FT - SET NAIL & BRASS WASHER IN FACE AND BARK SCRIBE "T33S R3W S12 BT" {N.34°W., 73 LKS}
AND A NEW BEARING TREE:
A 24" D.FIR BEARS N.39°E., 37.8 FT SCRIBED "T33S R2W S7 BT" ON DBL BLAZE

CORNER FALLS ON EAST EDGE OF N-S CAT ROAD, AT THE BASE OF A 24" D.FIR, WHICH BEARS EAST 2.0 FT

7. 1/4 S12/S7 GCDB 700540 PROPORTIONED CORNER
FOUND A 1 1/4" IRON POST BY JCSO IN 2009 PER THE FIRST RE-ESTABLISHMENT, FIRMLY SET AND PROJECTING 6" ABOVE GROUND WITH A 18" DIAM MOUND OF STONE TO TOP, WITH A PROPERLY MKD. 2 1/2" BRASS CAP PER THE RECORD, AND ACCESSORIES PER THE 2009 JCSO RECORD.

LEGEND:

- = FOUND PLSS MONUMENT AS NOTED
- △ = COMPUTED POINT - NOT TIED OR SET
- [] = RECORD PER ORIGINAL GLO - RUFUS MOORE - 1884
- { } = RECORD PER USBLM PLAT NO. 408 - HANS THIELSEN - 1958
- () = RECORD PER SURVEY NO. 9442 - LLOYD SMITH - 1982
- (()) = RECORD PER USBLM ADMINISTRATIVE SURVEY NO. 42 - G.L. CASTER - 1981
- = PROPERTY LINES BLAZED, PAINTED & POSTED WITH 5 1/2" STEEL POSTS.



BTS SURVEYING, INC.
348 SE JACKSON ST., ROSEBURG, OR 97470
(541) 673-0966 adam@btssurveying.com

SCALE: 1" = 400'	FOR: SILVER BUTTE TIMBER CO.	JOB #: 17-051
DATE: NOVEMBER 3, 2017	PO BOX 4 RIDDLE, OR 97469	FILE: ROCK-SALT12_PLAT1.DWG
		SHEET 1 OF 1