

MAP OF SURVEY For TAMMY COURSON

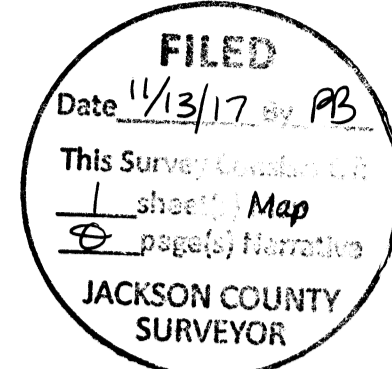
305 N. OREGON
JACKSONVILLE, OREGON

Located in:

Lots 1, 2, 3, & 4, Block 20, in the Town of
Jacksonville, in the N.E. 1/4 of SECTION 32, and
the S.E. 1/4 of SECTION 29, T.37S., R.2W.,
Willamette Meridian, Jackson County Oregon

HOFFBUHR & ASSOCIATES, INC.
880 GOLF VIEW DRIVE, SUITE 201
MEDFORD, OREGON 97504
(541)779-4641

BY: DARRELL L. HUCK PLS No. 2023
SCALE: 1 inch = 50 feet November 09, 2017
BASIS OF BEARING: SURVEY NUMBER 18043



FOUND RAILROAD SPIKE
DOWN 0.3' IN ASPHALT.
ORIGIN UNKNOWN
SEE SURVEYS 7389,
14883, & 16358

PURPOSE: THE PURPOSE OF THIS SURVEY IS TO MONUMENT THAT PARCEL
AS DESCRIBED IN DEED DOCUMENT NUMBER 1998-029165 O.R.

PROCEDURE: MY CLIENTS DEED DESCRIPTION DESCRIBES LOT 1 THROUGH 4 OF
BLOCK 20 IN THE "MAP OF JACKSONVILLE" RECORDED IN
SUBDIVISION BOOK 04, PAGE 249.

MONUMENTS WERE SEARCHED FOR AND FOUND ALONG THE
CONTROLLING STREET CENTERLINES OF OREGON ST., FIRST ST., "D"
ST., AND "E" ST.

OREGON STREET WAS ESTABLISHED BY HOLDING THE FOUND
MONUMENT AT THE INTERSECTION OF "C" ST. AND A FOUND
MONUMENT REPORTED AS THE ANGLE POINT OF OREGON ST. AN
ADDITIONAL MONUMENT WAS FOUND AT THE INTERSECTION OF "F"
ST. AND WAS USED TO PROPORTION THE INTERSECTIONS OF "E" ST.
AND "D". THERE IS NO RECORD OF THE ORIGIN OF THE FOUND
RAILROAD SPIKES ALONG THE CENTERLINE OF OREGON ST.
HOWEVER, MULTIPLE SURVEYS HAVE HELD THE RAILROAD SPIKES AS
SHOWN.

"E" ST. WAS ESTABLISHED FROM THE CALCULATED INTERSECTION
WITH OREGON ST. AND FOUND MONUMENT AT THE INTERSECTION OF
3RD ST. ADDITIONAL MONUMENTS WERE FOUND ALONG THE
RIGHT-OF-WAY, AND WERE FOUND TO FIT WELL.

"D" ST. WAS ESTABLISHED FROM THE CALCULATED INTERSECTION
WITH OREGON ST. AND FOUND MONUMENT AT THE INTERSECTION OF
FIRST ST. ADDITIONAL MONUMENTS WERE FOUND ALONG THE
RIGHT-OF-WAY, AND WERE FOUND TO FIT WELL.

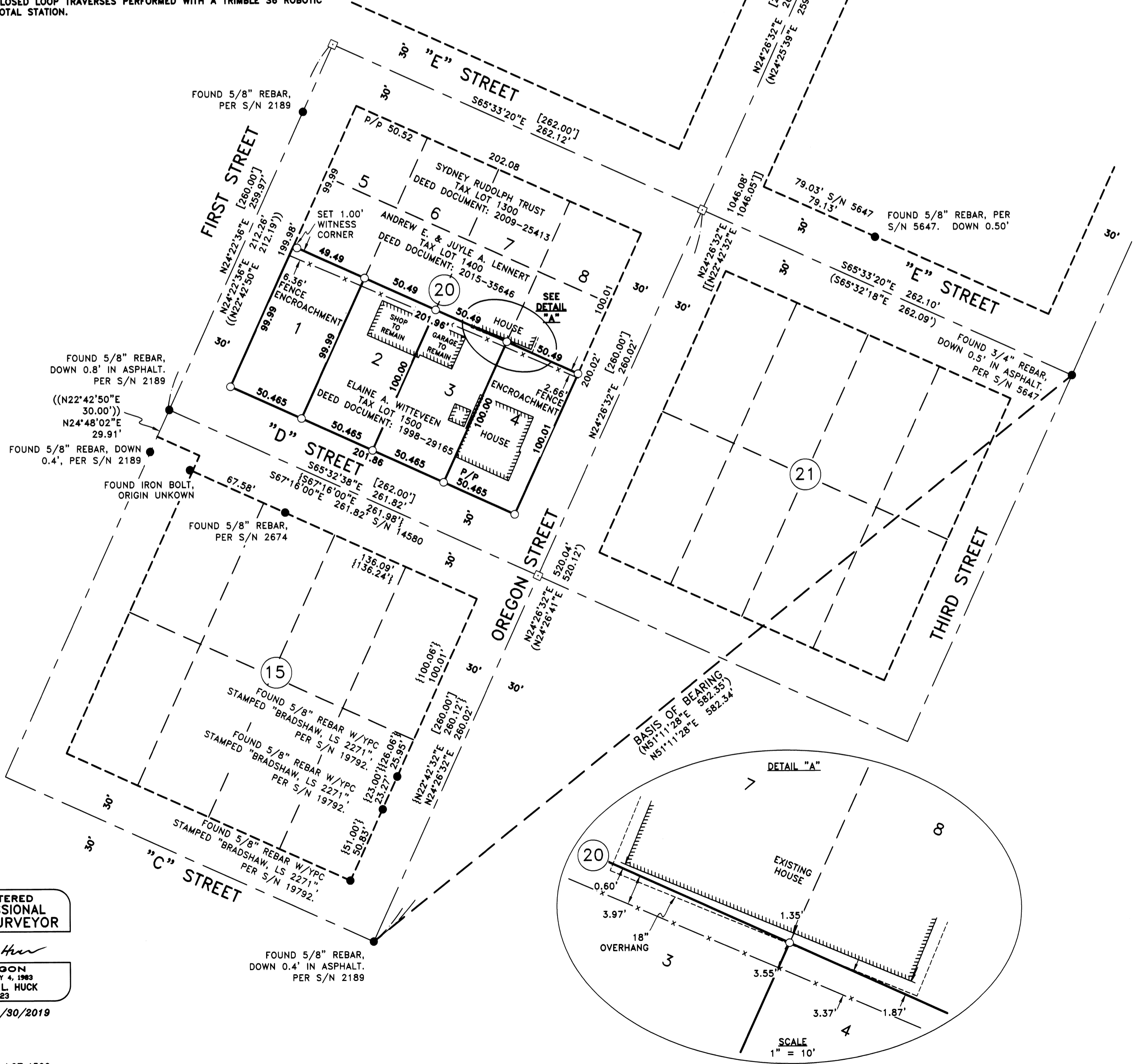
FIRST ST. WAS ESTABLISHED FROM THE FOUND MONUMENT AT THE
INTERSECTION WITH "D" ST. AND A MONUMENT FURTHER NORTH
ALONG THE CENTERLINE AS SHOWN.

AFTER PERTINENT STREETS WERE ESTABLISHED, FULL RIGHT-OF-WAY
WIDTHS WERE HELD, AND EQUAL PROPORTIONAL INTERIOR LINES
WERE CALCULATED. THE CALCULATED DISTANCES FIT VERY WELL
WITH RECORD DISTANCES.

ALL MONUMENT TIES AND MEASUREMENTS WERE CALCULATED FROM
CLOSED LOOP TRAVERSES PERFORMED WITH A TRIMBLE S6 ROBOTIC
TOTAL STATION.

LEGEND

- = FOUND MONUMENT AS NOTED
- = FOUND RAILROAD SPIKE, ORIGIN UNKNOWN
- = SET 5/8" X 24" IRON PIN WITH PLASTIC CAP
STAMPED "HOFFBUHR & ASSOC"
- = CALCULATED POSITION
- S/N = SURVEY NUMBER
- [] = RECORD PER "MAP OF JACKSONVILLE"
SUBDIVISION FILED AS BOOK 04, PAGE 249
- (()) = RECORD PER S/N 2189
- () = RECORD PER S/N 18043
- [[]] = RECORD PER S/N 15266
- { } = RECORD PER S/N 19792
- W/YPC = WITH YELLOW PLASTIC CAP



REGISTERED
PROFESSIONAL
LAND SURVEYOR

Darrell L. Huck
OREGON
FEBRUARY 4, 1983
DARRELL L. HUCK
2023

Expires 6/30/2019

37 2W 32BA, TAX LOT 1500
(17090 MOS.DWG)