

PROPERTY LINE ADJUSTMENT ACCORDING TO CITY OF MEDFORD MUNICIPAL CODE CHAPTER 10.297 (PLANNING FILE NO. PLA-17-108)

EXAMINED AND APPROVED THIS 31ST DAY OF OCTOBER, 2017

CITY OF MEDFORD PLANNING DIRECTOR

EXAMINED AND APPROVED THIS 27 DAY OF OCT., 2017

CITY OF MEDFORD SURVEYOR

TAX LOT 309 ADJUSTED PER DOC. NO. 2017-037550, O.R.J.C.O. 25,318 SF

TAX LOT 311 ADJUSTED PER DOC. NO. 2017-037551, O.R.J.C.O. 25,303 SF

CURVE TABLE

CURVE	DELTA	RADIUS	LENGTH	CHORD	BEARING
1	90°00'00"	25.00'	39.27'	35.36'	S44°07'42"W
2	90°00'00"	25.00'	39.27'	35.36'	S45°52'18"E

REGISTERED PROFESSIONAL LAND SURVEYOR

David M. Minneci

OREGON JULY 26, 1988 DAVID M. MINNECI 2349

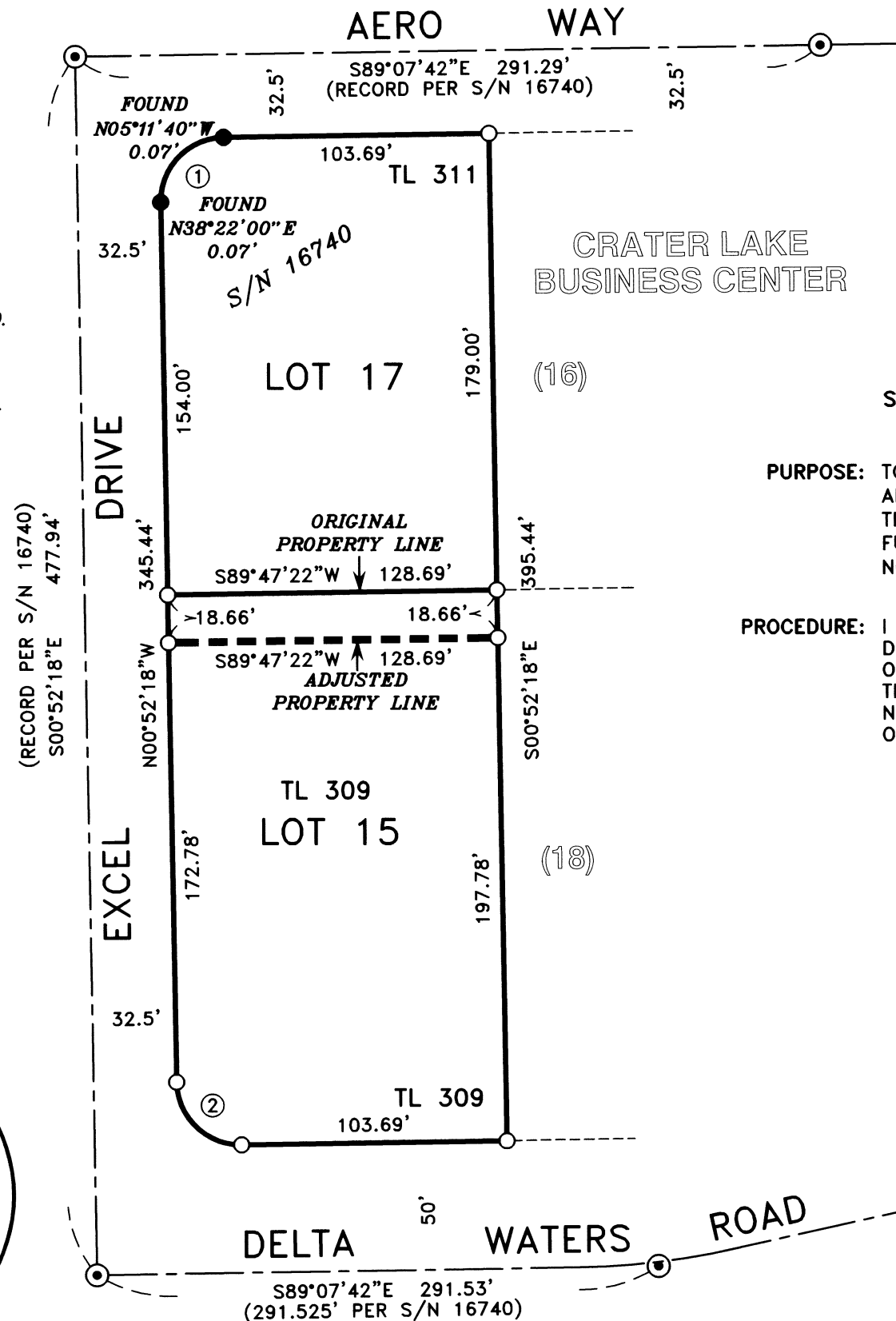
EXPIRES 12/31/18

****RECEIVED****
Date 11/2/17 By PB
This survey consists of:
1 sheet(s) Map
2 pages(s) Narrative
JACKSON COUNTY SURVEYOR

Map of Survey (Property Line Adjustment)

Located in:
Lots 15 & 17 of
CRATER LAKE BUSINESS CENTER
in the Southeast 1/4 of Section 7 (07D)
Township 37 South, Range 1 West, W.M.,
City of Medford, Jackson County, Oregon
TL 309 & 311

For:
MC Holdings, LLC
3560 Excel Drive Ste. 101
Medford, Oregon 97504



SURVEY NARRATIVE TO COMPLY WITH PARAGRAPH 209.250 OREGON REVISED STATUTES

PURPOSE: TO SURVEY, MONUMENT AND PREPARE DEEDS FOR A PROPERTY LINE ADJUSTMENT (CITY OF MEDFORD PLANNING FILE NO. PLA-17-108). THE ADJUSTMENT IS TO PROVIDE ADDITIONAL AREA TO LOT 17 FOR FUTURE DEVELOPMENT. THESE PROPERTIES ARE DESCRIBED IN DOCS. NO. 2012-037166 (TAX LOT 309) AND 2012-037171 (TAX LOT 311).

PROCEDURE: I USED CENTERLINE MONUMENTS ON EXCEL DRIVE, AERO WAY AND DELTA WATERS ROAD TO ESTABLISH CONTROL AND RECOVER WHAT ORIGINAL MONUMENTS REMAINED FROM SURVEY NO. 16740. I RESET THE PROPERTY CORNERS THAT WERE MISSING ALONG WITH THE CORNERS DELINEATING THE ADJUSTED LINE AND SHOW THE TWO FOUND ORIGINAL CORNERS SLIGHTLY OUT OF RECORD POSITIONING.

HOFFBUHR & ASSOCIATES, INC.
880 GOLF VIEW DR. STE. 201 MEDFORD, OREGON
(541) 779-4641

BY: DAVID M. MINNECI RPLS NO. 2349
SCALE: 1 INCH = 60' OCTOBER 18, 2017
BASIS OF BEARING: SURVEY NO. 16740
(CENTER LINE OF EXCEL DRIVE)

- = SET 5/8" x 24" IRON PIN WITH PLASTIC CAP STAMPED "D. MINNECI LS 2349"
- = FOUND 5/8" PIN WITH PLASTIC CAP STAMPED "HARDEY ENG. & ASSOC." PER S/N 16740. (DOCUMENT NO. 01-05671, O.R.J.C.O.)
- ⊙ = FOUND 5/8" PIN WITH METAL CAP STAMPED "HARDEY ENG. & ASSOC." PER S/N 16740. (DOCUMENT NO. 2004-069212, O.R.J.C.O.)
- S/N = SURVEY NUMBER
- O.R.J.C.O. = OFFICIAL RECORDS OF JACKSON COUNTY, OREGON

(C:\DWG\2017\17099MOS.dwg)