

22392

MAP OF SURVEY

FOR
 CITY OF ASHLAND, ENGINEERING DIVISION
 20 EAST MAIN STREET, ASHLAND, OREGON 97520

LOCATED IN
 THE SE 1/4 OF SECTION 14
 TOWNSHIP 39 SOUTH, RANGE 1 EAST, WILLAMETTE MERIDIAN,
 CITY OF ASHLAND, JACKSON COUNTY, OREGON

LEGEND

- REFERENCE POINT (RP) ; SET LEAD PLUG IN 1/4" DRILL HOLE WITH TACK, AND BRASS TAG MARKED " CITY OF ASHLAND" IN TOP OF CURB.
- ⊙ FOUND MONUMENT AS NOTED IN SURVEY MONUMENT CASE PER S/N 13830, REPLACED WITH 5/8" X 30" REBAR W/ 2" DIAMETER BRONZE DISK WITH PUNCH MARK STAMPED " CITY OF ASHLAND SURVEY MARKER " 1/4 " BELOW SURFACE.
- FOUND MONUMENT AS NOTED IN SURVEY MONUMENT CASE PER S/N 13830.

NOTES

1. ALL SET MONUMENTS ARE AT THE INTERSECTION OF REFERENCE POINTS.

REGISTERED
 PROFESSIONAL
 LAND SURVEYOR

Bradley F Barber

OREGON
 MARCH 18, 1997
 BRADLEY F. BARBER
 02806PLS

EXPIRES 12-31-2017

FILE H:\BENSON MAP OF SURVEY.DWG

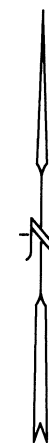
CITY OF ASHLAND
 20 E. MAIN STREET
 ASHLAND, OREGON



| | | | | |
|-------------|-----|------|------------|--------------------|
| DRAWN BY | BFB | DATE | 09-22-2017 | PREPARER'S JOB NO. |
| REVIEWED BY | SF | DATE | 09-22-2017 | |
| REVIEWED BY | KJ | DATE | 09-22-2017 | AGENCY JOB NO. |
| REVIEWED BY | | DATE | | |

PUBLIC WORKS ENGINEERING
 www.ashland.or.us 541-488-5587 fax 488-6006

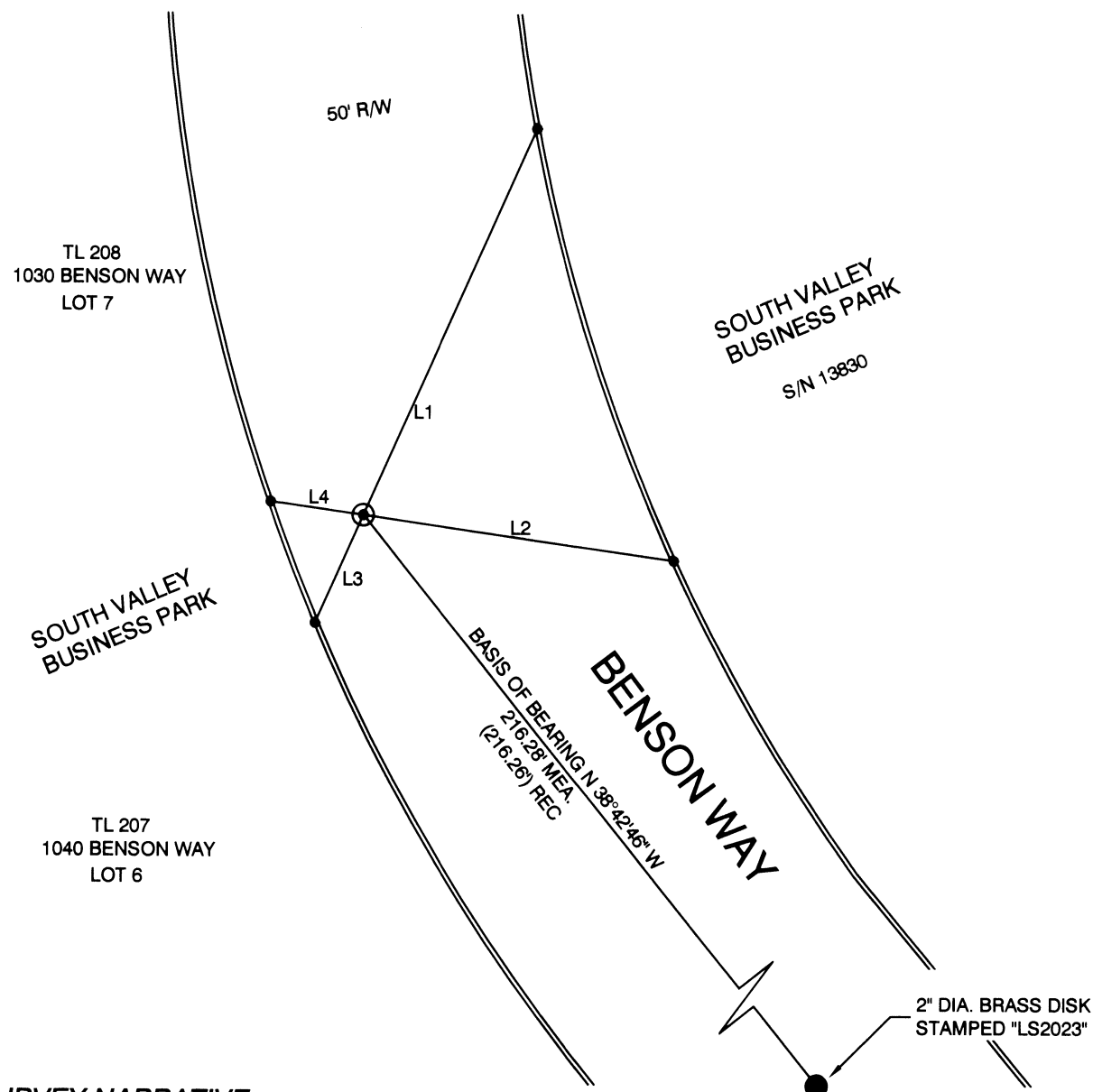
DRAWING NO.
 1 OF 1



SCALE 1" = 20'

LINE TABLE

| LINE | BEARING | MON TO RP | DISTANCE |
|------|-----------------|-----------|----------|
| L1 | N 23° 56' 03" E | | 48.81' |
| L2 | S 81° 53' 24" E | | 36.20' |
| L3 | S 23° 56' 03" W | | 13.60' |
| L4 | N 81° 53' 24" W | | 10.85' |



SURVEY NARRATIVE

TO COMPLY WITH ORS 209.140, AND ORS 209.250

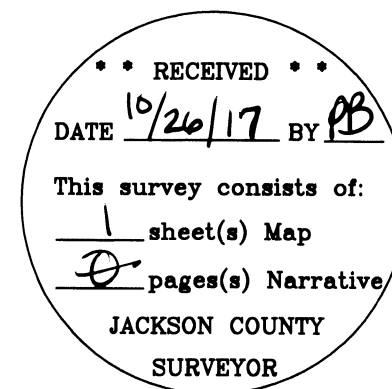
PURPOSE: TO REFERENCE EXISTING CENTERLINE MONUMENT(S) PRIOR TO CONSTRUCTION ACTIVITIES AND TO REPLACE THE MONUMENT(S) AFTER CONSTRUCTION ACTIVITIES ARE COMPLETED.

BASIS OF BEARING: CENTERLINE OF BENSON WAY PER S/N 13830

PROCEDURE: SET LEAD PLUG AND TACK IN 1/4" DRILL HOLE IN TOPS OF CURB MARKED "CITY OF ASHLAND" ON TWO QUADRANTS OF INTERSECTION. OCCUPIED EACH LEAD AND TACK AND SET OPPOSING LEAD AND TACK BY EXTENDING LINE FROM MONUMENT TO TOP OF CURB. REFERENCE POINTS WERE ESTABLISHED SO THAT STRAIGHT LINES FROM OPPOSING REFERENCE MARKS ARE THE MONUMENT LOCATION. THE INTERSECTION MONUMENT WAS REPLACED DUE TO DISTURBANCE DURING CONSTRUCTION BY OCCUPYING RP'S SET PRIOR TO CONSTRUCTION AND INTERSECTING THE LINES PRODUCED FROM THE RP'S, SEPTEMBER 22, 2017. INSTRUMENT NIKON DTM-322 TOTAL STATION.

DATE: 09-22-2017

39-1E-14D



22392