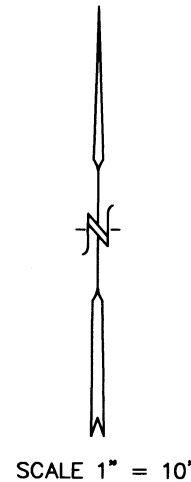
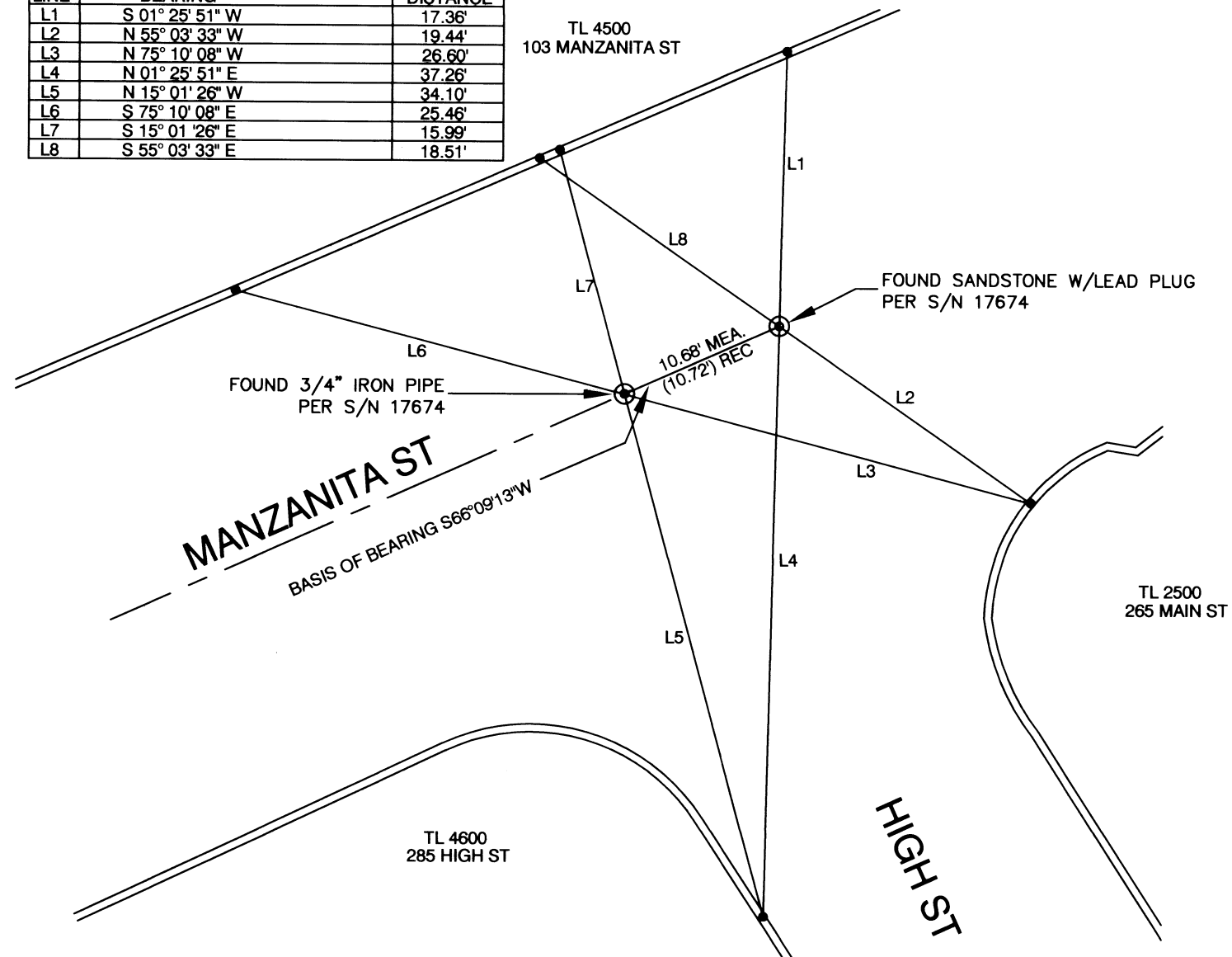


LINE TABLE

LINE	BEARING	DISTANCE
L1	S 01° 25' 51" W	17.36'
L2	N 55° 03' 33" W	19.44'
L3	N 75° 10' 08" W	26.60'
L4	N 01° 25' 51" E	37.26'
L5	N 15° 01' 26" W	34.10'
L6	S 75° 10' 08" E	25.46'
L7	S 15° 01' 26" E	15.99'
L8	S 55° 03' 33" E	18.51'



MAP OF SURVEY

FOR
CITY OF ASHLAND, ENGINEERING DIVISION
20 EAST MAIN STREET, ASHLAND, OREGON 97520

LOCATED IN
THE SE 1/4 OF SECTION 5
TOWNSHIP 39 SOUTH, RANGE 1 EAST, WILLAMETTE MERIDIAN,
CITY OF ASHLAND, JACKSON COUNTY, OREGON

LEGEND

- REFERENCE POINT (RP) ; SET LEAD PLUG IN 1/4" DRILL HOLE WITH TACK IN TOP OF CURB.
- ⊙ FOUND MONUMENT AS NOTED IN SURVEY MONUMENT CASE PER S/N 17674, REPLACED WITH 5/8" X 30" REBAR W/ 2" DIAMETER BRONZE DISK WITH PUNCH MARK STAMPED " CITY OF ASHLAND SURVEY MARKER " 1/4 " BELOW SURFACE.

NOTES

1. ALL SET MONUMENTS ARE AT THE INTERSECTION OF REFERENCE POINTS.

SURVEY NARRATIVE

TO COMPLY WITH ORS 209.140, AND ORS 209.250

PURPOSE: TO REFERENCE EXISTING CENTERLINE MONUMENT(S) PRIOR TO CONSTRUCTION ACTIVITIES AND TO REPLACE THE MONUMENT(S) AFTER CONSTRUCTION ACTIVITIES ARE COMPLETED.

BASIS OF BEARING: CENTERLINE OF MANZANITA STREET PER S/N 17674

PROCEDURE: SET LEAD PLUG AND TACK IN 1/4" DRILL HOLE IN TOPS OF CURB MARKED "CITY OF ASHLAND" ON TWO QUADRANTS OF INTERSECTION. OCCUPIED EACH LEAD AND TACK AND SET OPPOSING LEAD AND TACK BY EXTENDING LINE FROM MONUMENT TO TOP OF CURB. REFERENCE POINTS WERE ESTABLISHED SO THAT STRAIGHT LINES FROM OPPOSING REFERENCE MARKS ARE THE MONUMENT LOCATION. THE INTERSECTION MONUMENT WAS REPLACED DUE TO DISTURBANCE DURING CONSTRUCTION BY OCCUPYING RPS SET PRIOR TO CONSTRUCTION AND INTERSECTING THE LINES PRODUCED FROM THE RPS, JUNE 14, 2017. INSTRUMENT NIKON DTM-322 TOTAL STATION.

DATE: 06-14-2017

39-1E-05DD

REGISTERED
PROFESSIONAL
LAND SURVEYOR

Bradley F Barber

OREGON
MARCH 18, 1997
BRADLEY F. BARBER
02806PLS

EXPIRES 12-31-2017

RECEIVED
DATE 7/10/17 BY PB
This survey consists of:
1 sheet(s) Map
0 pages(s) Narrative
JACKSON COUNTY
SURVEYOR

FILE H:\HIGH ROTATED.DWG

CITY OF ASHLAND 20 E. MAIN STREET ASHLAND, OREGON			
DRAWN BY	BFB	DATE	
REVIEWED BY	SF	DATE	06-14-2017
REVIEWED BY	KJ	DATE	06-14-2017
REVIEWED BY		DATE	
PUBLIC WORKS ENGINEERING www.ashland.or.us 541-488-5587 fax 488-6006			DRAWING NO. 1 OF 1