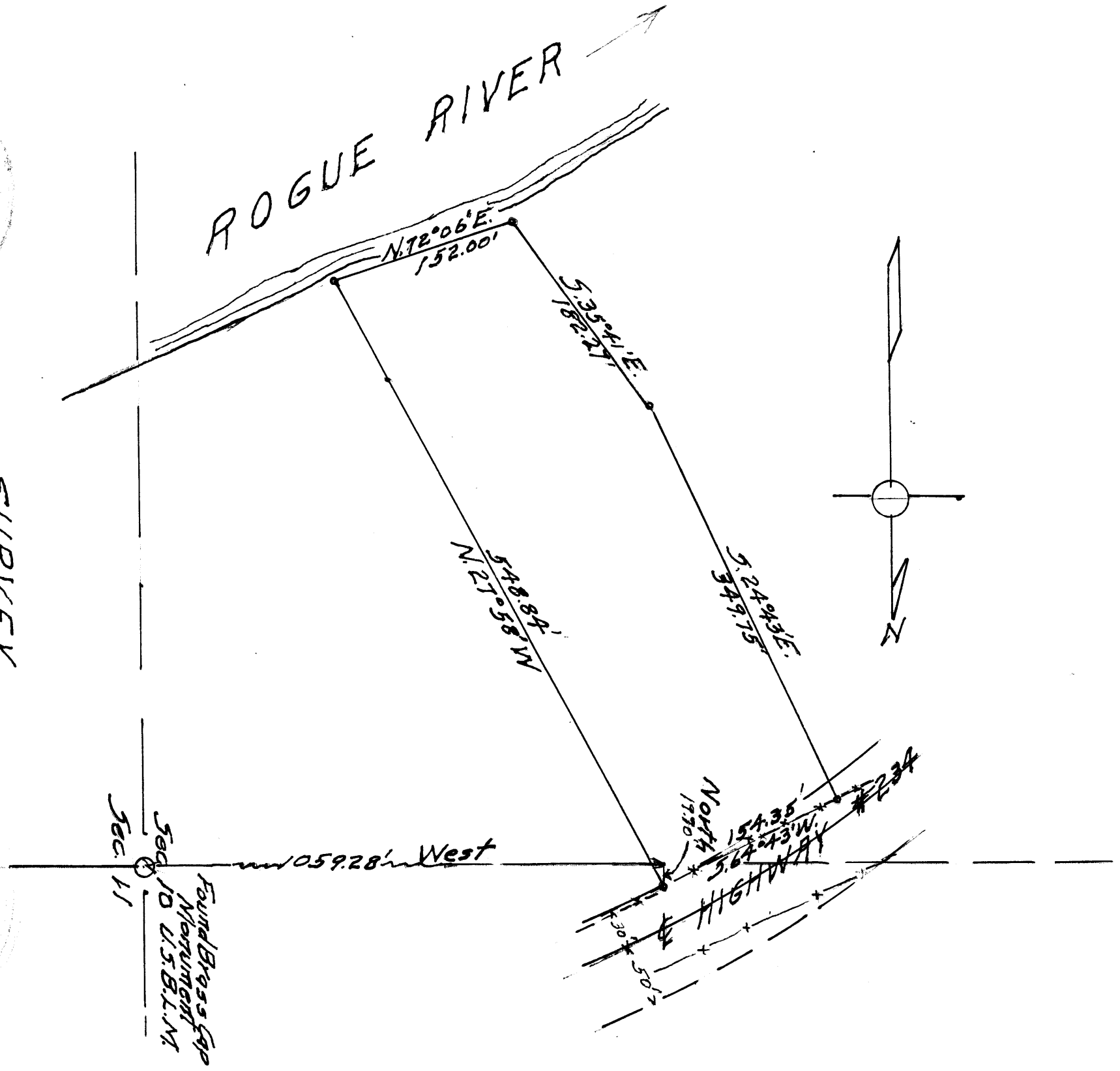
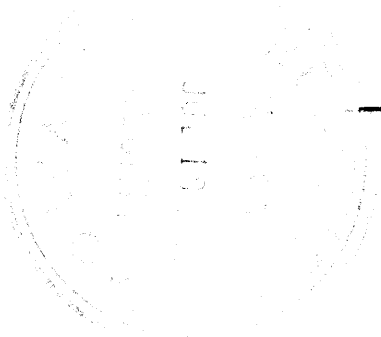


**SURVEY**  
**FOR**  
**VOLTA TOLMAN**  
 Sec. 10 T. 36 S. R. 3 W. W.M.  
 JACKSON COUNTY, OREGON  
 Scale 1" = 100'  
 June 1962  
 Hugh C. Hagle  
 Civil Engineer



July, 13, 1963

SURVEY NARRATIVE TO COMPLY WITH PARAGRAPH 209.350  
OREGON REVISED STATUTES.

For;- Mrs. Vola Tolman and Mr. Hansen.

## PURPOSE:

To establish boundaries and make description of a tract of land as designated.

## PROCEDURE :\*

Previous descriptions of land parcels to the South were tied to a railroad iron monument set by Cap. White for the South Quarter Corner of Section 10.

The parcel surveyed by this survey was near a newly re-established corner set by Cadastral Engineer for the East Quarter corner of Section 10, in T. 36 S. R. 3 W., so a tie was made from that to the Point of Beginning of this surveyed, by a traverse from the East Quarter corner.

Bearings are from Polaris observation.

The location of Highway # 234 Right-of-way is not definite but lines shown are close to line indicated by old 'P' line stakes as they existed and shown on State Highway map.

