

Map of Survey

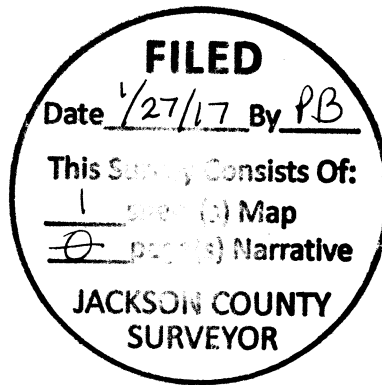
Property Line Adjustment

Approved by Jackson County Development Services
(File No. 439-16-00062)

By: *Tomie M. Duff* Date: *Jan. 27, 2017*
for: **Mike Adoff**

located in the SW 1/4 of Section 12,
T36S, R4W, WM, Jackson County, OR
by: **William Colisch PLS, PC**
291 Pyle Drive, Grants Pass, OR
541-474-1081 Survey@charter.net

December 5, 2016



CURVE	LENGTH	RADIUS	DELTA	CHORD	BEARING
C1	53.93'	746.20'	04°08'28"	53.92'	N 22°23'25" E
C2	53.76'	746.20'	04°07'39"	53.74'	N 26°31'29" E
C1 + C2 record 107.75' per Highland Meadows					

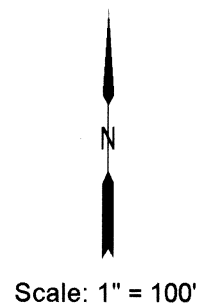
Narrative

Purpose: To adjust the boundary between the lands described in documents 2015-035962 and 2016-022832 Jackson County Official Records.

Procedure: Utilizing a Nikon total station, I tied the monuments shown. I held the Section corner and three pipes from Highland Meadows to establish the south line of the Section. I held the north line to be 330 feet north of said south line. I held the monumented northeast line as shown on SN 21598.

Legend

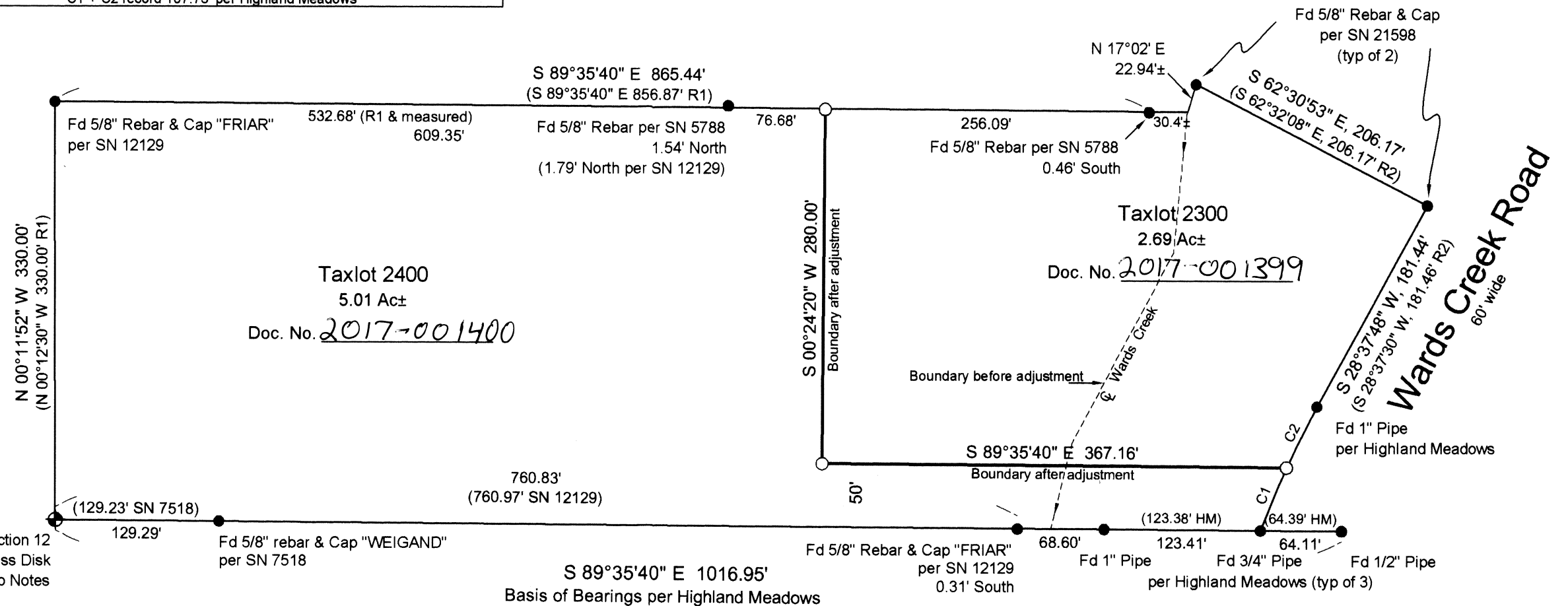
- = Set 5/8"x30" rebar & yellow plastic cap stamped "COLISCH LS 2659"
- ⊕ = Found monument as noted
- R1 = record per SN 12129
- R2 = record per SN 21598



REGISTERED
PROFESSIONAL
LAND SURVEYOR

William Colisch

OREGON
July 19, 1994
WILLIAM COLISCH
2659
Renews 12/31/17



16050 Mike Adoff