

SURVEY FOR:
JM THOMPSON
715 E. "D" STREET
JACKSONVILLE, OR 97530

SURVEY BY:
L.J. FRIAR & ASSOCIATES, P.C.
CONSULTING LAND SURVEYORS
P.O. BOX 1947
PHOENIX, OREGON 97535
PHONE: (541) 772-2782
EMAIL: lfriar@charter.net

DATE:
AUGUST 1, 2016

MAP OF SURVEY

In Block 70 & 71, POOL & KLIPPEL'S ADDITION &
located in the N.E. 1/4 of Sec. 32, T.37S., R.2W., W.M.
City of Jacksonville Jackson County, Oregon

LEGEND:

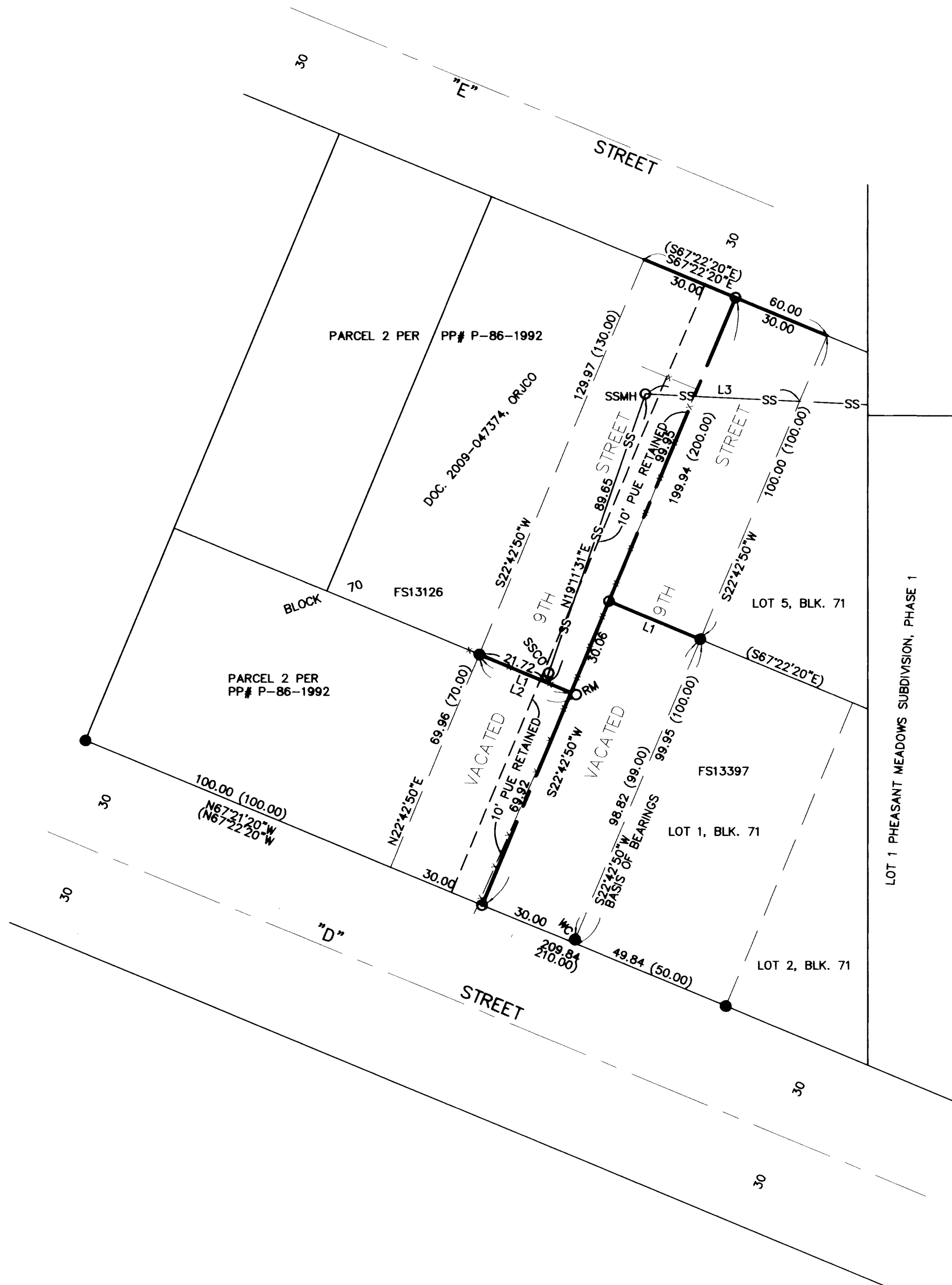
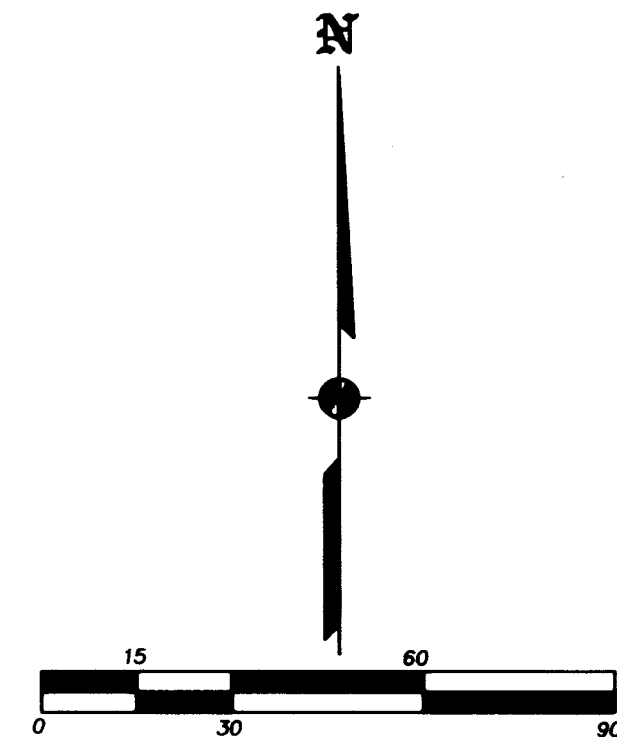
- = FD. 5/8" IRON PIN & PLASTIC CAP MKD. LS1644 PER FS13126 OR 13397.
- = SET 5/8" X 24" IRON PIN & PLASTIC CAP MKD. L.J. FRIAR & ASSOC.
- ORJCO = OFFICIAL RECORDS OF JACKSON COUNTY, OREGON.
- () = RECORD DATA PER FS13126 AND 13397.
- WC = WITNESS CORNER MONUMENT.
- FS = FILED SURVEY #.
- X- = FENCE LINE.
- RM = REFERENCE CORNER MONUMENT SET S67°17'10"E, 0.50 FROM TRUE POSITION.
- SSMH = SANITARY SEWER MANHOLE.
- SSCO = SANITARY SEWER CLEANOUT.
- SS- = SANITARY SEWER LINE (EASEMENT TO BE RETAINED).
- PP# = PARTITION PLAT NO.
- L1 = SEE COURSE DATA TABLE.
- PUE = PUBLIC UTILITY EASEMENT TO BE RETAINED.

BASIS OF BEARINGS:

SURVEY NO. 13397 AS SHOWN HEREON.

UNIT OF MEASUREMENT = FEET SCALE: 1" = 30'

COURSE DATA TABLE		
NUM	BEARING	DISTANCE
L1	S67°17'10"E	30.00
L2	S67°17'10"E	30.50



SURVEY NARRATIVE TO COMPLY WITH O.R.S. 200.250

PURPOSE: TO SURVEY AND MONUMENT THE END POINTS OF TRACT CREATED THROUGH A STREET VACATION. SEE CITY OF JACKSONVILLE FILE NO. 2016-68.

PROCEDURE: USING TRIMBLE R6 & R8 G.P.S. RECEIVERS AND TOPCON GPT-6000C TOTAL STATION, MADE TIES TO MONUMENTS OF RECORD AS SHOWN HEREON TO CONTROL THE R/W TO BE VACATED AND THE SUBJECT TRACT CORNERS. USED MAP RECORD DISTANCE PER FS13397 ALONG THE EASTERLY LINE OF 9TH STREET TO POSITION THE MOST NORTHERLY CORNER OF BLOCK 71. HELD MAP BEARING PER FS13397 TO DEFINE THE DIRECTION OF THE "E" STREET R/W. FROM THE FOUND MONUMENTS ALONG THE R/W OF 9TH STREET PROJECTED A LINE PERPENDICULAR TO THE CENTERLINE OF 9TH STREET TO POSITION THE CORNERS OF THE PROPERTY ACQUIRED THROUGH THE VACATION. SET PINS AT THE LOCATIONS SHOWN HEREON, TIED THE SANITARY SEWER LINE FOR THE PURPOSE OF PREPARING A DESCRIPTION TO BE USED IN GRANTING AN EASEMENT OVER SAID LINE.

REGISTERED PROFESSIONAL LAND SURVEYOR

Jan 2016
OREGON
JULY 17, 1986
JAMES E. HIBBS
2234
RENEWAL DATE: 6-30-17

RECEIVED
DATE 8/15/16 BY *lfriar*
This survey consists of:
1 sheet(s) Map
0 page(s) Narrative
JACKSON COUNTY SURVEYOR