

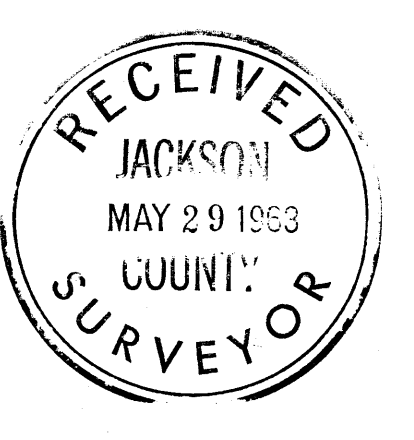
D.L.C. #54

MAP
SHOWING DETAIL OF SURVEY
J. W. BAYLISS
IN T. 33 S. R. 1 E. WM. OREGON
SURVEYED - 4-28-52

ASHLAND, ORE.
L. E. AGER
SCALE: 1" = 400'

D.L.C. #57

REGISTERED
OREGON
LAND SURVEYOR
J. W. BAYLISS
MAY 29 1953
COUNTY
SURVEYOR

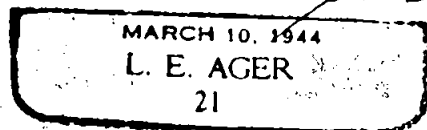
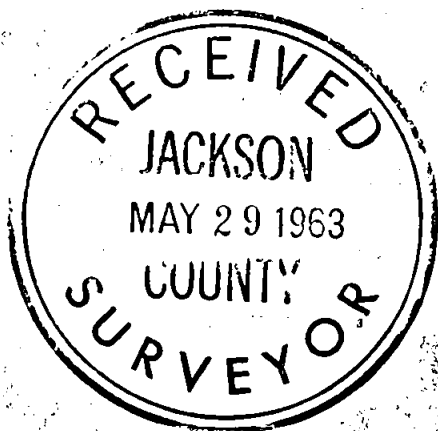


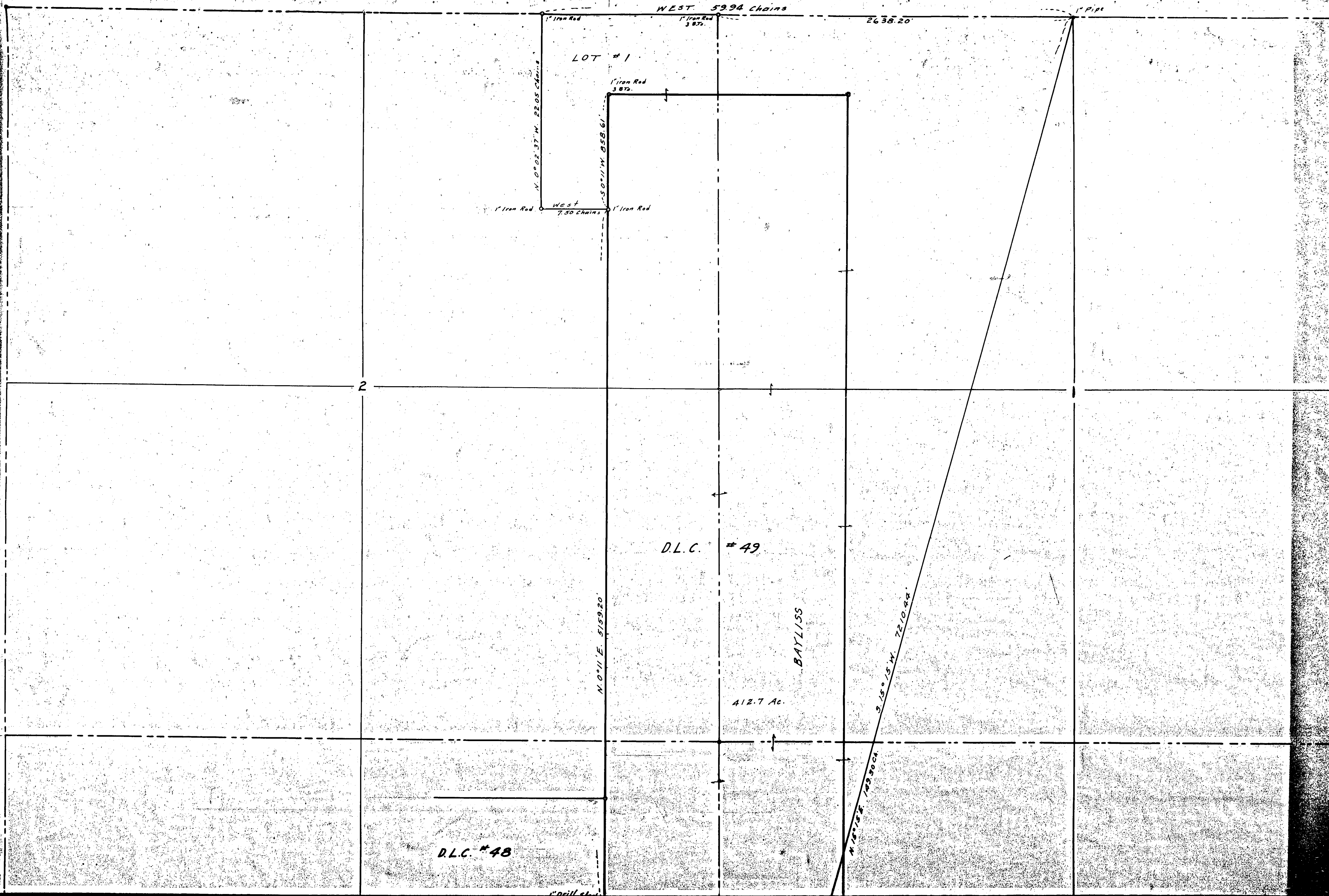
Survey narrative to comply with ORS 209.250

For: J. W. Bayliss, Ashland, Oregon

Purpose: To mark the Southwest and Southeast corners of portion of Bayliss property in D.L.C. # 49 and portion in Section 1 and also the North line of the NW $\frac{1}{4}$ of Section 1.

Procedure: Found the Northwest corner of Section 1 and Surveyed a line East from this corner to a point approx. 3 feet north of and on line with a diagonal fence line running N. 15° 15' E. for the Easterly boundary of the Bayliss property. I set a 1" iron pipe in stone mound at this point bed rock on ground surface, pipe not driven. the distance measured as shown on map. the line from the Section corner no. produced beyond this point, no tie to NE corner of Section 1. Found the Northwest corner of D.L.C. # 49 and measured along the west line of said D.L.C. and found an iron rod for the SSE. corner of Lot 1 Sec. 2 as indicated. From this point I measured along the D.L.C. line 5159.20 feet and set a 1" drill steel for corner on line of iron pins found along this line. from this point I ran S. 77° 47' E. 1616.47 feet and set a 1" drill steel on the diagonal fence line and measured from this point along the fence line to the iron pipe. Northeast corner of D.L.C. not found. The North, West and most Southerly lines of Lot 1 Section 2 established by Ausland and Dodson, this platted on my map from their dope. I did not check these lines. Their survey dated Aug. 1946, South of the line marked at the corners with 1" drill steel not surveyed, 1/2 inch iron pipes shown on map were indicated in old Deed Record, having been set on original survey.





D.L.C. # 49

BAYLISS

412.7 Ac.

N 0°11' E. 5159.20'

S 75° 15' W. 7210.44'

N 15° 15' E. 149.90 CH.

D.L.C. # 48

1" Drill Steel

N. 77° 47' W.

1616.47'

1" Drill Steel

12

S. 0°11' W. 187.26 Chains

BAYLISS

97.9 A.

3/4" Iron Pipe

1/2" Iron Pin

N. 53° W. 13.0 Chains

1/2" Iron Pin

BAYLISS (Sold) 7.706 Acres

HIGHWAY 266

N. 45° E. 16.00 Chains

N. 89° 56' W. 847.90'

1" Iron Pipe

1" Iron Pipe

Sec. Cor. Sec. 11, 12, 13, 14

Drill Steel in Pavement