

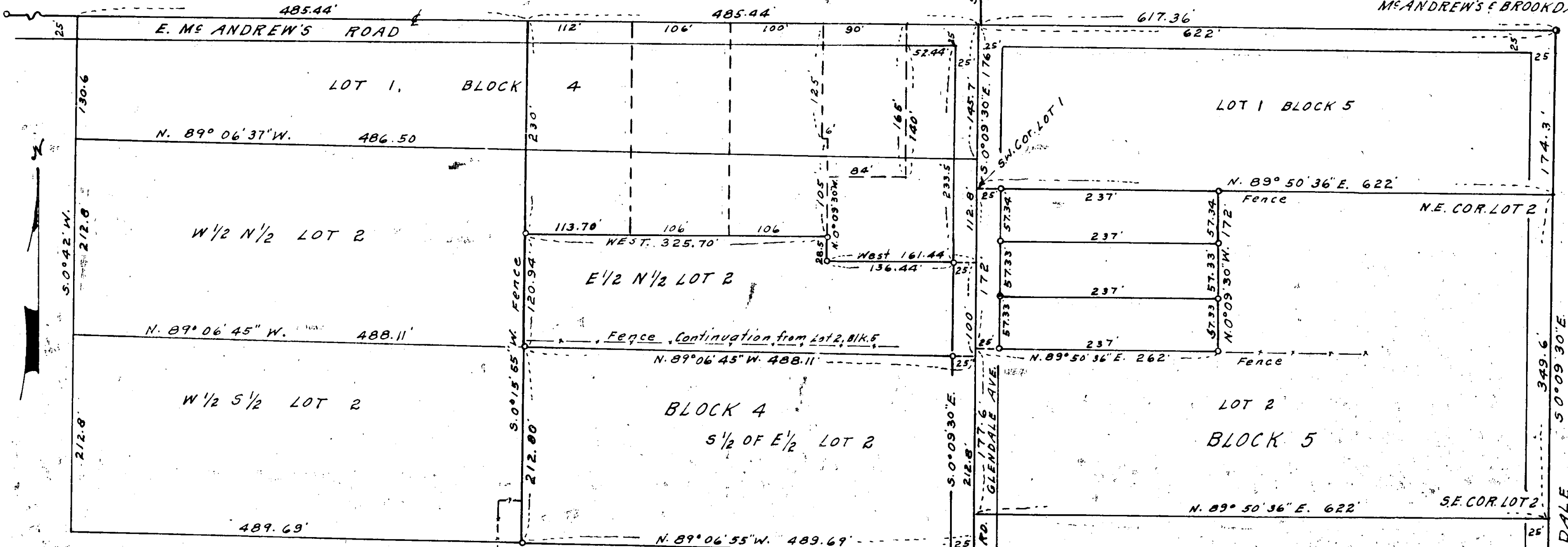
MON. INT. E
MCANDREWS &
SPRINGBROOK

17 16 T.37S. R.1W. W.M.
20 21 STONE MON.

2198

2198

CENTER LINE MON.
MCANDREWS & BROOKDALE



MAP OF SURVEY
 PORTIONS LOTS 1 & 2 BLOCK 4, AND
 PORTION LOT 2, BLOCK 5, PIERCE
 SUBDIVISION, IN D.L.C. 63, SEC. 20 & 21,
 T. 37S. R. 1W. W.M.
 PORTION N 1/2 OF E 1/2 LOT 2, BLOCK 4,
 SURVEYED FOR:
 P. W. PURCELL, 53 S. MODOC, MEDFORD,
 OREGON.
 DATE: APR. 1963 SCALE: 1"=100'
 MON. FOUND AT ST. & INTERSECTIONS AND
 SEC. & 1/4 COR. AS INDICATED
 O = IRON PIPES AT CORNERS OF TRACTS SURVEYED
 SOLAR DATUM

REGISTERED
 OREGON
 LAND SURVEYOR

L. E. Ager
 MARCH 10, 1944
 L. E. AGER
 21

RECEIVED
 JACKSON
 MAY 29 1963
 COUNTY
 SURVEYOR

2198

SPRING ST. MON.

BROOKDALE

1" IRON PIPE
21
1/4 COR.

Survey narrative to comply with ORS 209.250

For: P. W. Purcell, 53 Modoc, Medford, Oregon.

Purpose: To mark the boundaries of a portion of the East Half of the North Half of Lot 2, Block 4 of the Pierce Subdivision.

Procedure: For the North line of Blocks 4 and 5 I used the former established South line of Block 3, along the established center-line of East McAndrew's Road. For the West line of Block 4, I used the projected west line of Block 3. For the East line of Block 5, I used the center-line of Brookdale Road. For the division line of Blocks 4 and 5, I used the Subdivision record distance of 622 feet West of the intersecting center-line of McAndrew's Road with the center-line of Brookdale Road. No record of the East-West length of the North line of Block 4. this derived by subtracting the record East-West width of Block 5 from the total distance of the North line of Blocks 4 and 5. I used the the record distances as shown on original plat for the lengths of the East and West lines of Lots 1 and 2 in Block 4 for the division of these Lots. Lot 2 Block 4 divided into equal parts as the Deed Records of the properties involved refer to portions of the East Half of Lot 2, Block 4. Portions of the East Half of Lots 1 and 2, previously conveyed by description and no monuments found at the corners of these tracts, except a 1/2 inch pipe found approx. 1 foot East and 25.79 feet South of my point computed for the mid point along the North line of Lot 1 in Block 4. The Section corner common to Sections 16, 17, 20 and 21, T. 37 S., R. 1 W. and the 1/4 corner common to Sec. 20 & 21 tied in to center line of East McAndrew's Road, ties as shown on map. This accompanying map includes portions of other surveys submitted for record.

