

SURVEY FOR:
SUSAN CALZARETTA
P.O. BOX 1389
MEDFORD, OR 97504

SURVEY BY:
L.J. FRIAR & ASSOCIATES, P.C.
CONSULTING LAND SURVEYORS
PO BOX 1947
PHOENIX, OR 97535
PHONE: (541) 772-2782
EMAIL: LJFRIAR@CHARTER.NET

DATE:
MARCH 31, 2016

MAP OF SURVEY

PROPERTY LINE ADJUSTMENT

Located in the N.E. 1/4 of Sec. 1, T.38S, R.2W, W.M.
& in the City of Medford, Jackson County, Oregon
(Medford File #PLA-15-132)

***** APPROVALS *****
CITY OF MEDFORD FILE NO. PLA-15-132

EXAMINED AND APPROVED this 8th day of April 20 16

Lianca Petron
City Planner

EXAMINED AND APPROVED this 8th day of April 20 16

[Signature]
City Surveyor

SURVEY NARRATIVE TO COMPLY WITH O.R.S. 209.250

PURPOSE: To survey and monument two adjusted tracts created through a Property Line Adjustment. See File No. PLA-15-132.

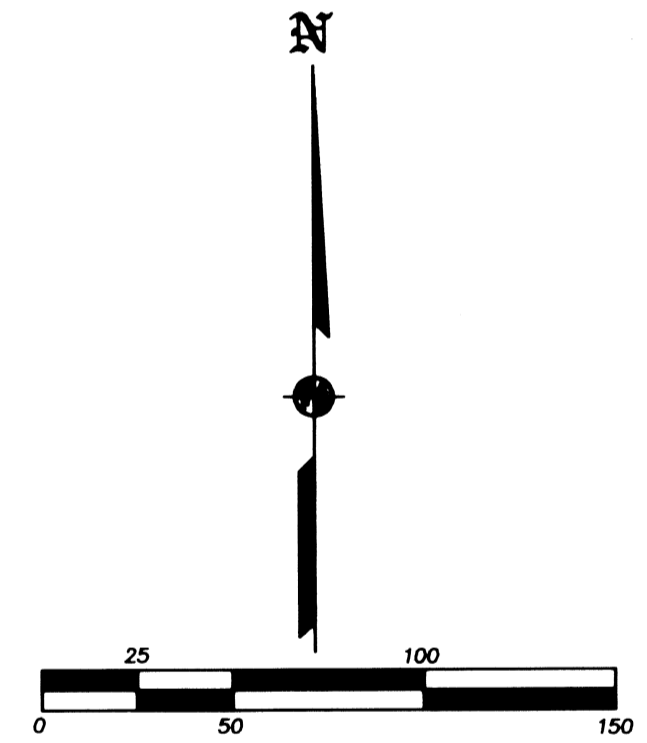
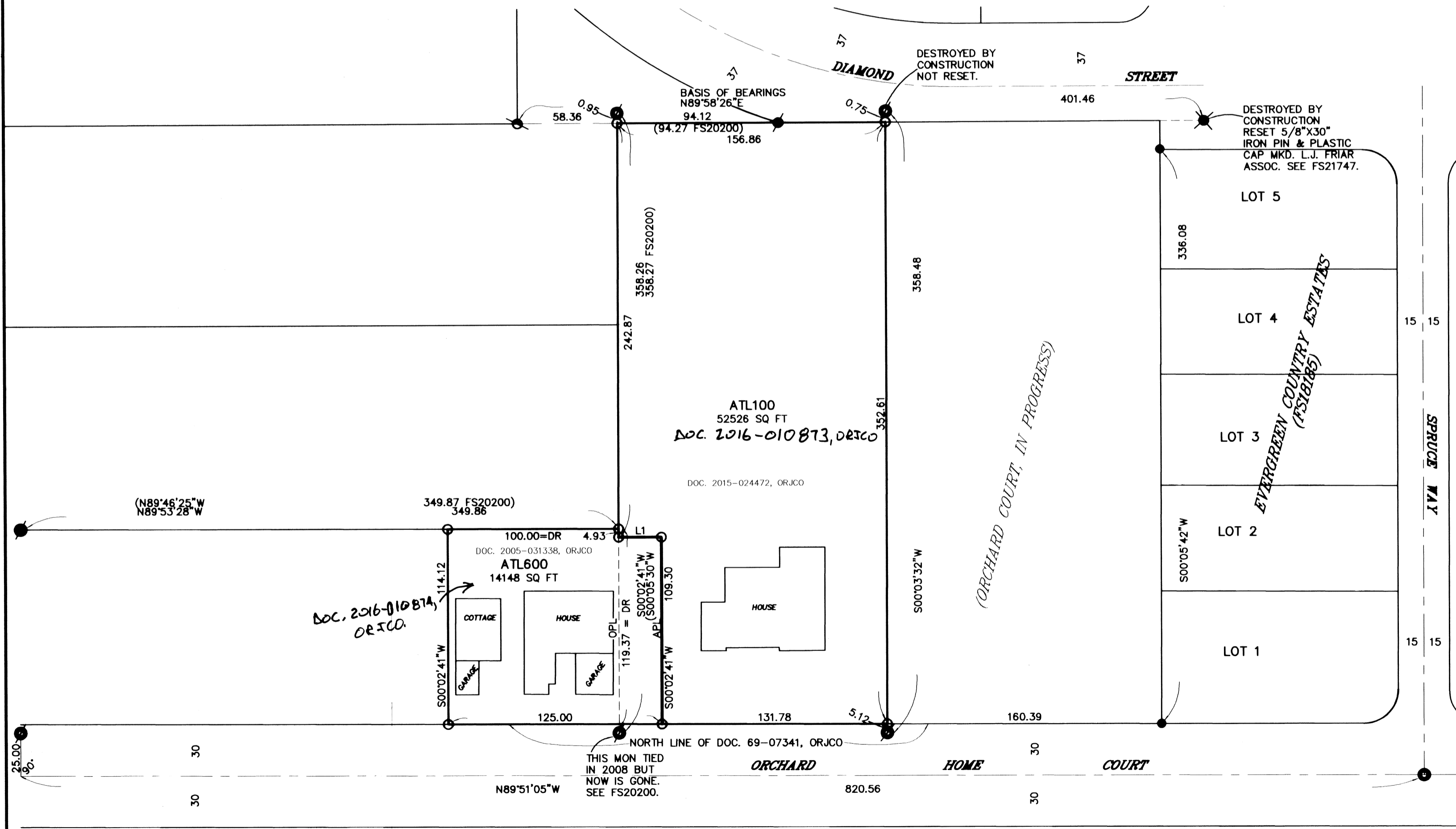
PROCEDURE: Used monuments previously tied or set by this office during FS20200, et al. Using Trimble R6 & R8 G.P.S. receivers, made ties to additional monuments of record as shown to control this survey. The north line was held on line between the found pin per FS10596 to the West and the 4" brass disk per FS10596 to the East. The monuments per FS16592 to control the position of the east and west lines of Doc. 2015-024472, ORJCO and the North line of Doc. 2005-031338, ORJCO. Deeds in the vicinity match the measurements shown on FS16592 and as these monuments were tied it became evident these monuments were used to build improvements along the lines. In my opinion monuments per FS16592 are intended to represent the various deeds of surrounding properties. I then held deed record distance from the previously tied monument at the S.E. of Doc. 2005-031338, ORJCO to position the N.E. corner of said tract. Held deed record distance from the N.E. corner to position the N.W. corner. Held the west line of said tract parallel to the East per deed record. Computed the adjusted property line location as requested and set monuments as shown hereon. The found monuments per FS16592 near the N.E. & N.W. corner of Doc. 2015-024472, ORJCO were erroneously shown on FS20200 as being on the line between the found pin per FS10596 to the West and the 4" brass disk per FS10596 to the East. In reality there are positioned as shown hereon.

LEGEND:

- = FOUND 5/8" IRON PIN & PLASTIC CAP MKD C NEATHAMER LS56545 PER FS18185.
- = FOUND 5/8" IRON PIN & PLASTIC CAP MKD L.J. FRIAR & ASSOC. PER FS20200.
- = FOUND 4" BRASS DISC. SEE FS10596.
- = FOUND 5/8" IRON PIN & ALUMINUM CAP MKD C/L MON LS56545 PER FS18185.
- = FOUND 3/4" IRON PIPE PER FS16592.
- = FOUND 5/8" IRON PIN & PLASTIC CAP MKD RLS 638 PER FS10596.
- = SET 5/8" X 24" IRON PIN & PLASTIC CAP MKD. L.J. FRIAR & ASSOC.
- ORJCO = OFFICIAL RECORDS OF JACKSON COUNTY, OREGON.
- FS = FILED SURVEY NO.
- MKD = MARKED.
- L1 = SEE COURSE DATA TABLE.

BASIS OF BEARINGS: WARREN PARK SUBDIVISION, PHASE 1 (FS21747) AS SHOWN HEREON.
UNIT OF MEASUREMENT: FEET SCALE: 1" = 50'

COURSE DATA TABLE		
NUM	BEARING	DISTANCE
L1	N89°56'28"W	25.00



REGISTERED PROFESSIONAL LAND SURVEYOR
Jon E. Hibbs
OREGON
JULY 17, 1986
JAMES E. HIBBS
2234
RENEWAL DATE 6-30-17

FILED
Date 4/13/16 By PB
This Survey Consists Of:
1 sheet(s) Map
0 page(s) Narrative
JACKSON COUNTY SURVEYOR