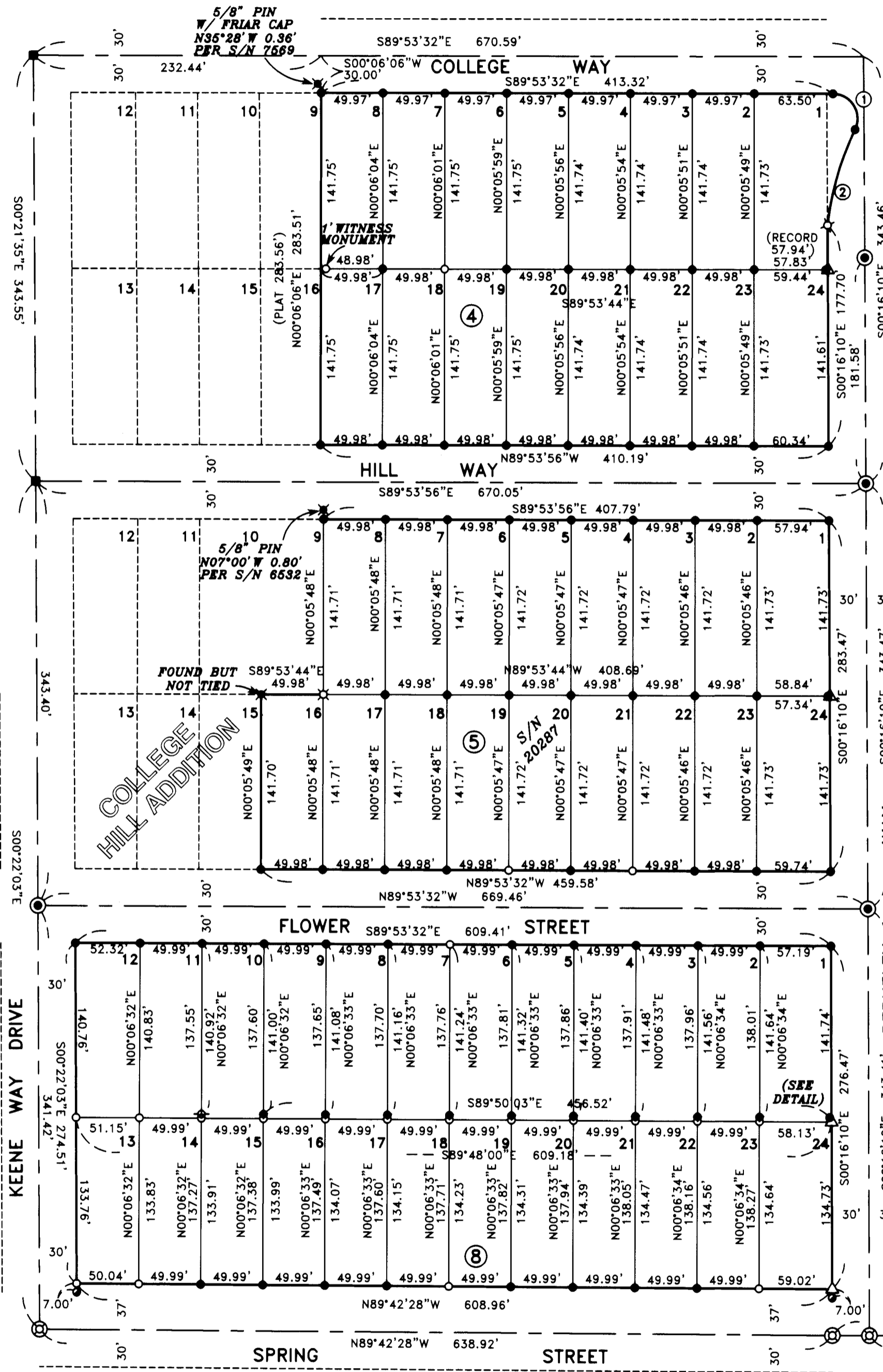


Map of Survey

For:
HAYDEN HOMES

Located in:
in Block 8 and
Portions of Blocks 4 & 5 of
COLLEGE HILL ADDITION
to the City of Medford
in the Northwest 1/4 of Section 20,
Township 37 South, Range 1 West, W.M.,
in the City of Medford, Jackson County, Oregon



CURVE TABLE

CURVE	DELTA	RADIUS	LENGTH	CHORD	BEARING
1	116°04'43"	20.00'	40.52'	33.94'	N31°51'10"W
2	19°55'48"	231.50'	80.53'	80.12'	S16°01'17"W

SURVEY NARRATIVE TO COMPLY WITH PARAGRAPH 209.250 OREGON REVISED STATUTES

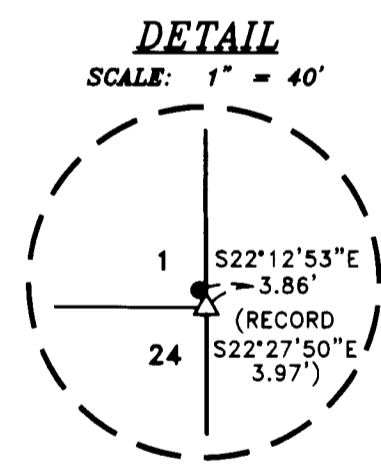
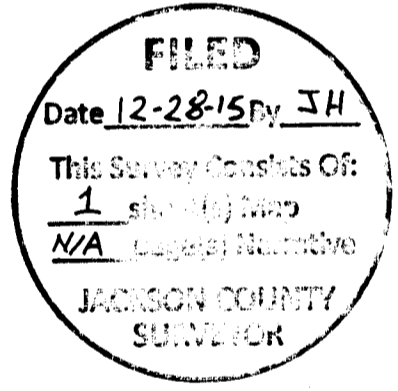
PURPOSE: To survey, replace missing monuments from Survey No. 20287 and set monuments on the Southerly line of Lots 1-12 of Block 8 of COLLEGE HILLS ADDITION per clients request. Survey No. 20287 was filed to establish a record of the monuments set for a proposed land division in 2006 that was never recorded. The property has now changed ownership and the current owners requested that all missing monuments be set or replaced.

PROCEDURE: The boundary of the property has been previously surveyed and monumented per filed Survey No. 20287 done by this office. Using control established in the performance of this survey, I set monuments at the proportioned positions of the common lot corners of Lots 1-24 in Block 8 and the record position of those monuments deemed missing.

BASIS OF BEARING: The centerline of Berkeley Way per Survey No. 20287.

DATE: November 2, 2015.

Equipment used: Trimble S6 Robotic Instrument.



HOFFBUHR & ASSOCIATES, INC.
880 GOLF VIEW DR., STE 201 MEDFORD, OREGON
(541) 779-4641

BY: DAVID M. MINNECI RPLS NO. 2349
SCALE: 1 INCH = 80' NOVEMBER 2, 2015
BASIS OF BEARING: SURVEY NO. 20287

- = SET 5/8" X 24" IRON PIN WITH PLASTIC CAP STAMPED "D. MINNECI LS 2349.
- ⊗ = SET 5/8" X 30" IRON PIN WITH PLASTIC CAP STAMPED "D. MINNECI LS 2349".
- △ = SET LEAD PLUG & TACK WITH METAL WASHER STAMPED LS 2349" IN CONCRETE SIDEWALK.
- = FOUND 5/8" IRON PIN WITH PLASTIC CAP STAMPED "LS 2349" PER S/N 20287.
- ⊙ = FOUND LEAD PLUG & TACK WITH METAL WASHER STAMPED "LS 2349" IN CONCRETE SIDEWALK PER S/N 20287.
- ⊙ = FOUND 5/8" X 30" IRON PIN WITH ALUMINUM CAP STAMPED "LS 2349" PER S/N 20287.
- ⊗ = MONUMENT AS NOTED.
- = RECORD POSITION. ORIGINAL MONUMENT DESTROYED BY CONSTRUCTION. (NOT RESET)
- = CALCULATED POINT FROM CITY OF MEDFORD. REFERENCES
- ⊙ = RECORD POSITION PER S/N 20287. (NOT VISITED THIS SURVEY)
- S/N = SURVEY NUMBER

REGISTERED PROFESSIONAL LAND SURVEYOR
David M. Minnecci
OREGON
JULY 24, 1988
DAVID M. MINNECI
2349
EXPIRES 12/31/16