

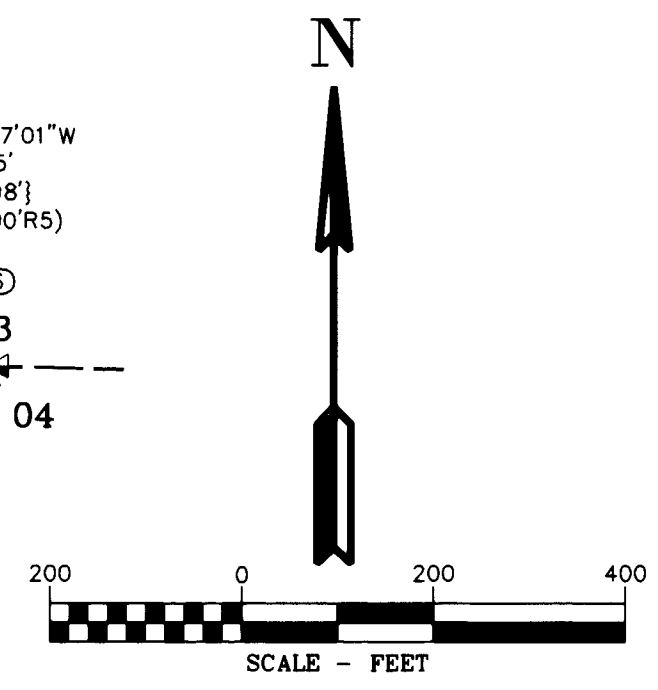
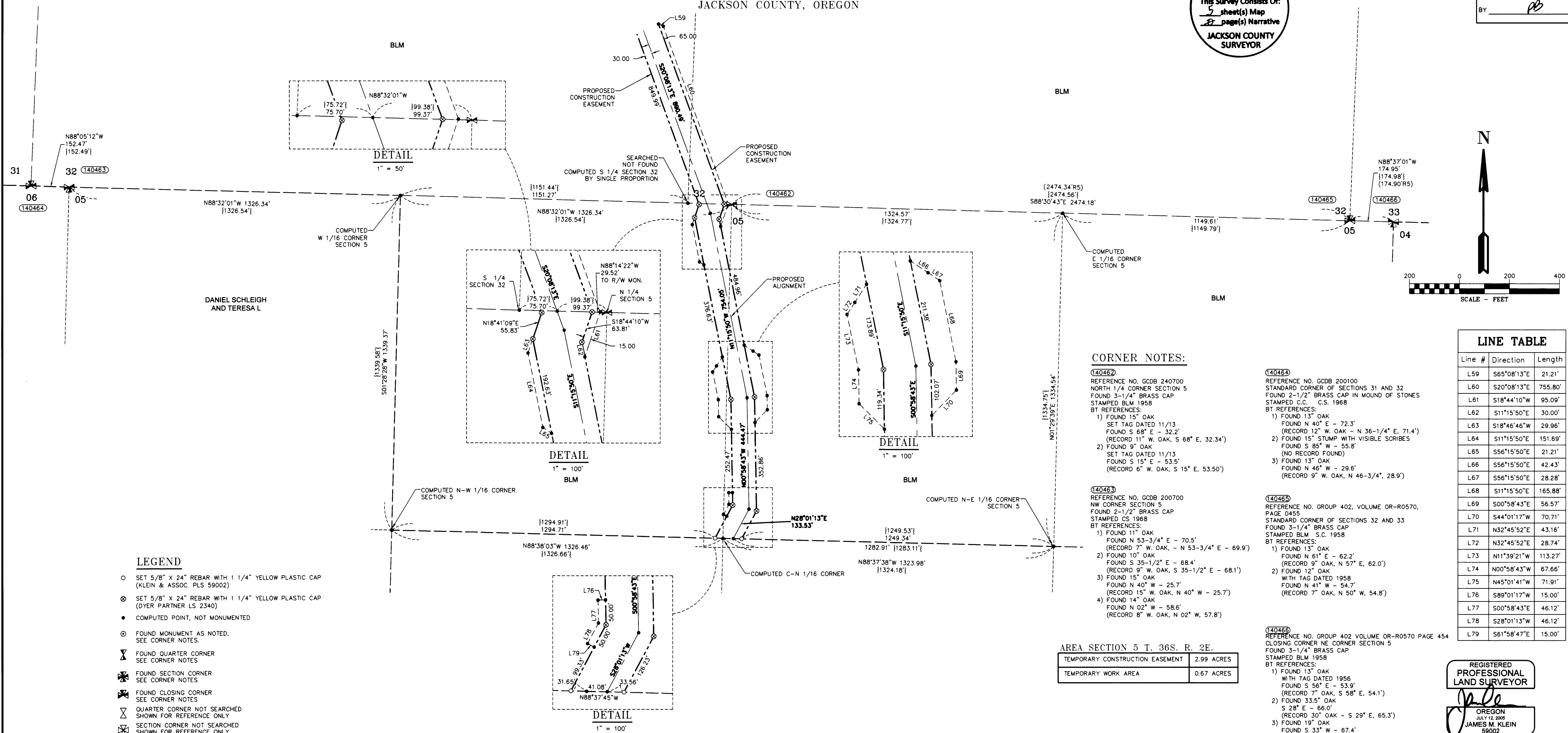


# MAP OF SURVEY

LOCATED IN  
SECTION 5, TOWNSHIP 36 SOUTH,  
RANGE 2 EAST, WILLAMETTE MERIDIAN  
JACKSON COUNTY, OREGON

JACKSON COUNTY  
SURVEYOR'S OFFICE  
SURVEY NO. **21778**  
FILED 8/5/15  
BY PB

**FILED**  
Date 8/5/15 By PB  
This Survey Consists Of:  
5 sheet(s) Map  
2 page(s) Narrative  
JACKSON COUNTY  
SURVEYOR



LINE TABLE

Line #	Direction	Length
L59	S65°08'13"E	21.21'
L60	S20°08'13"E	755.80'
L61	S18°44'10"W	95.09'
L62	S11°15'50"E	30.00'
L63	S18°46'46"W	29.96'
L64	S11°15'50"E	151.69'
L65	S56°15'50"E	21.21'
L66	S56°15'50"E	42.43'
L67	S56°15'50"E	28.28'
L68	S11°15'50"E	165.88'
L69	S00°58'43"E	56.57'
L70	S44°01'17"W	70.71'
L71	N32°45'52"E	43.16'
L72	N32°45'52"E	28.74'
L73	N11°39'21"W	113.27'
L74	N00°58'43"W	67.66'
L75	N45°01'41"W	71.91'
L76	S89°01'17"W	15.00'
L77	S00°58'43"E	46.12'
L78	S28°01'13"W	46.12'
L79	S61°58'47"E	15.00'

### CORNER NOTES:

- (140462)**  
REFERENCE NO. GCDB 240700  
NORTH 1/4 CORNER SECTION 5  
FOUND 3-1/4" BRASS CAP  
STAMPED BLM 1958  
BT REFERENCES:  
1) FOUND 15" OAK  
SET TAG DATED 11/13  
FOUND S 68° E - 32.2'  
(RECORD 11" W. OAK, S 68° E, 32.34')  
2) FOUND 9" OAK  
SET TAG DATED 11/13  
FOUND S 15° E - 53.5'  
(RECORD 6" W. OAK, S 15° E, 53.50')
- (140463)**  
REFERENCE NO. GCDB 200700  
NW CORNER SECTION 5  
FOUND 2-1/2" BRASS CAP  
STAMPED CS 1968  
BT REFERENCES:  
1) FOUND 11" OAK  
FOUND N 53-3/4° E - 70.5'  
(RECORD 7" W. OAK, - N 53-3/4° E - 69.9')  
2) FOUND 10" OAK  
FOUND S 35-1/2° E - 68.4'  
(RECORD 9" W. OAK, S 35-1/2° E - 68.1')  
3) FOUND 15" OAK  
FOUND N 40° W - 25.7'  
(RECORD 15" W. OAK, N 40° W - 25.7')  
4) FOUND 14" OAK  
FOUND N 02° W - 58.6'  
(RECORD 8" W. OAK, N 02° W, 57.8')

AREA SECTION 5 T. 36S. R. 2E.

TEMPORARY CONSTRUCTION EASEMENT	2.99 ACRES
TEMPORARY WORK AREA	0.67 ACRES

### LEGEND

- SET 5/8" X 24" REBAR WITH 1 1/4" YELLOW PLASTIC CAP (KLEIN & ASSOC. PLS 59002)
- ⊙ SET 5/8" X 24" REBAR WITH 1 1/4" YELLOW PLASTIC CAP (DYER PARTNER LS 2340)
- COMPUTED POINT, NOT MONUMENTED
- ⊕ FOUND MONUMENT AS NOTED, SEE CORNER NOTES
- ⊗ FOUND QUARTER CORNER, SEE CORNER NOTES
- ⊗ FOUND SECTION CORNER, SEE CORNER NOTES
- ⊗ FOUND CLOSING CORNER, SEE CORNER NOTES
- ⊗ QUARTER CORNER NOT SEARCHED SHOWN FOR REFERENCE ONLY
- ⊗ SECTION CORNER NOT SEARCHED SHOWN FOR REFERENCE ONLY
- ① POINT NUMBER
- {xxx.xx'} GROUND DISTANCE
- {(xxx.xx')} RECORD DISTANCE PER REFERENCED SURVEY
- R1 REFERENCED SURVEY
- RM REFERENCE MONUMENT
- W.M. WILLAMETTE MERIDIAN
- PROPOSED ALIGNMENT
- - - - - TEMPORARY CONSTRUCTION EASEMENT
- - - - - TEMPORARY WORK AREA

### REFERENCE SURVEYS:

- 1) GLO PLAT T. 35 S., R. 2 E. - JULY 7, 1856
- 2) GLO PLAT T. 36 S., R. 2 E. - JULY 30, 1855
- 3) SURVEY NO. 10663 - AUGUST 1886
- 4) SURVEY NO. 4601 - AUGUST 1971
- 5) BLM DEPENDENT RESURVEY NO. 1956 - SEPT. 26, 1960
- 6) SURVEY NO. 15330 - MARCH 27, 1997

REGISTERED PROFESSIONAL LAND SURVEYOR  
*Douglas A. Popham*  
OREGON  
JULY 14, 1989  
DOUGLAS A. POPHAM  
2877  
Expires 12-31-2016

CERTIFIED FEDERAL SURVEYOR  
1245  
Expires June 5, 2017

REGISTERED PROFESSIONAL LAND SURVEYOR  
*Michael W. Erickson*  
OREGON  
JULY 28, 1988  
MICHAEL W. ERICKSON  
2340  
Expires 12-31-2015

REGISTERED PROFESSIONAL LAND SURVEYOR  
*James M. Klein*  
OREGON  
JULY 12, 2008  
JAMES M. KLEIN  
59002  
Expires 6-30-2017

**KA**  
Klein & Associates, Inc.  
ENGINEERING • SURVEYING • PLANNING  
1411 13th Street • Hood River, OR 97031  
TEL: 541-388-3322 • FAX: 541-388-2616

**Primm Land Surveying, Inc.**  
1340 NE 4th Street, Hermiston, OR 97838  
TEL (541) 564-7887 FAX (541) 567-8020

**THE DYER PARTNERSHIP ENGINEERS & PLANNERS, INC.**  
1330 Teakwood Avenue / Coos Bay, Oregon 97420  
(541) 269-0732 / WWW.DYERPART.COM

PACIFIC CONNECTOR GAS PIPELINE PROJECT  
PACIFIC CONNECTOR GAS PIPELINE, LP  
MAP OF SURVEY  
SECTION 5  
TOWNSHIP 36 SOUTH, RANGE 2 EAST, W.M.  
JACKSON COUNTY, OREGON

DRAWN BY: LIS	DATE: 04-24-2015	ISSUED FOR BID:	SCALE: 1" = 200'
CHECKED BY:	DATE:	ISSUED FOR CONSTRUCTION:	
APPROVED BY:	DATE:	DRAWING NUMBER:	SHEET 5 OF 5

# MAP OF SURVEY

LOCATED IN  
SECTION 32, TOWNSHIP 35 SOUTH,  
RANGE 2 EAST, WILLAMETTE MERIDIAN  
JACKSON COUNTY, OREGON

JACKSON COUNTY  
SURVEYOR'S OFFICE

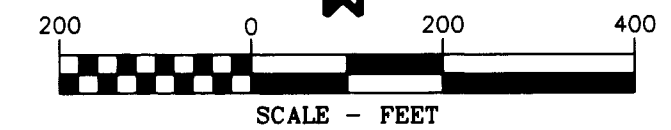
SURVEY NO. 21778

FILED 8/15/15

BY PB

**FILED**  
Date 8/15/15 by PB  
This Survey Consists Of:  
5 sheet(s) Map  
2 page(s) Narrative  
JACKSON COUNTY  
SURVEYOR

N

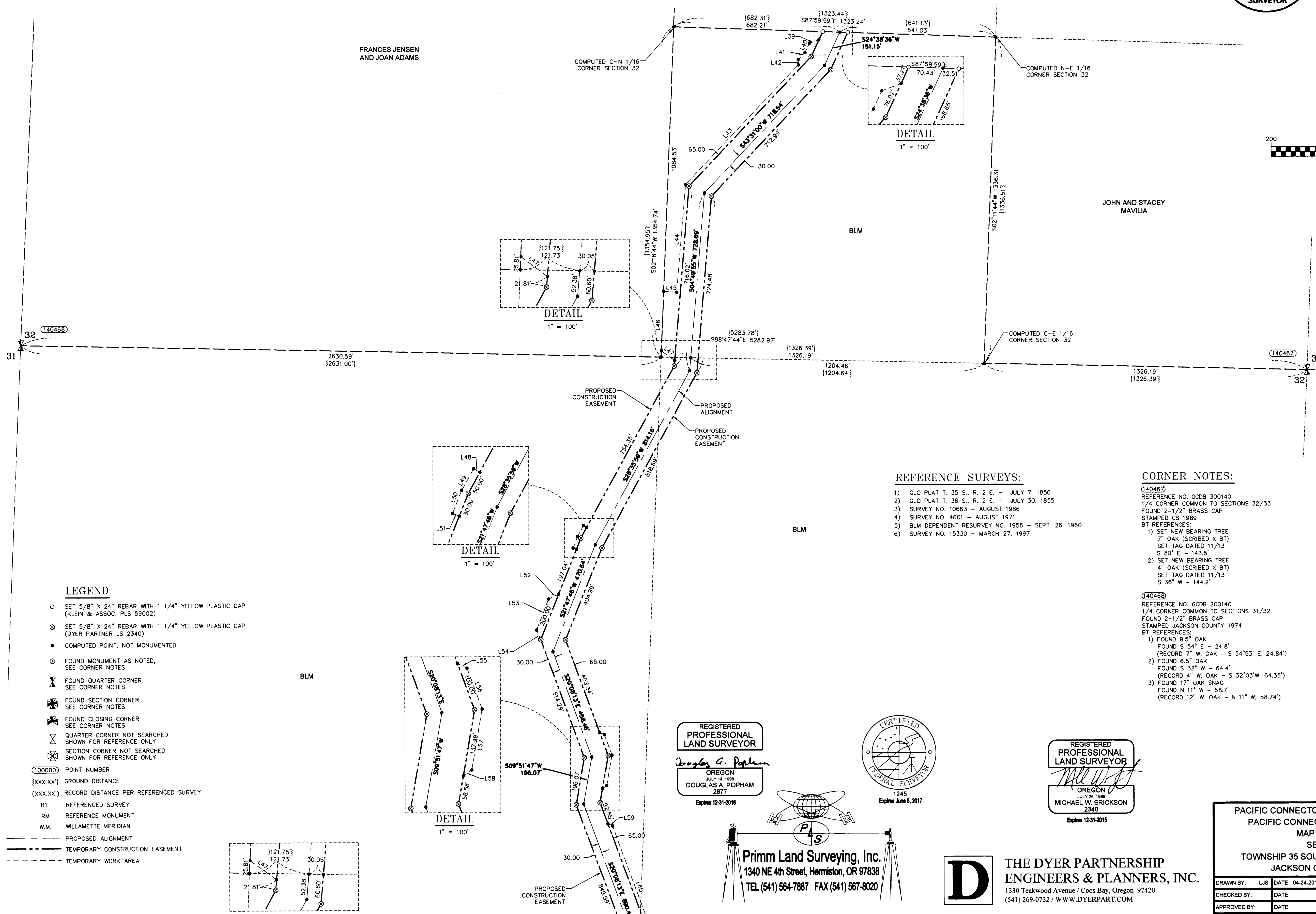


AREA SECTION 32 T. 35S. R. 2E.

TEMPORARY CONSTRUCTION EASEMENT	9.57 ACRES
TEMPORARY WORK AREA	0.49 ACRES

### LINE TABLE

Line #	Direction	Length
L39	S69°38'36"W	42.42'
L40	S24°38'36"W	41.04'
L41	S43°31'00"W	41.05'
L42	S01°29'00"E	21.21'
L43	S43°31'00"W	674.78'
L44	S04°49'55"W	441.74'
L45	N85°37'11"W	53.37'
L46	S02°18'36"W	244.07'
L47	S53°41'11"E	67.57'
L48	N61°24'01"W	15.00'
L49	S28°35'59"W	50.89'
L50	S21°47'46"W	50.89'
L51	S68°12'14"E	15.00'
L52	S64°30'41"W	45.70'
L53	S21°27'07"W	136.60'
L54	S23°32'53"E	42.43'
L55	S65°08'13"E	21.21'
L56	S20°08'13"E	89.02'
L57	S09°51'47"W	126.51'
L58	S54°51'47"W	21.21'
L59	S65°08'13"E	21.21'
L60	S20°08'13"E	755.80'



### LEGEND

- SET 5/8" X 24" REBAR WITH 1 1/4" YELLOW PLASTIC CAP (KLEIN & ASSOC. PLS 59002)
- ⊙ SET 5/8" X 24" REBAR WITH 1 1/4" YELLOW PLASTIC CAP (DYER PARTNER LS 2340)
- COMPUTED POINT, NOT MONUMENTED
- ⊙ FOUND MONUMENT AS NOTED, SEE CORNER NOTES
- ▽ FOUND QUARTER CORNER SEE CORNER NOTES
- ✱ FOUND SECTION CORNER SEE CORNER NOTES
- ✱ FOUND CLOSING CORNER SEE CORNER NOTES
- ⊠ QUARTER CORNER NOT SEARCHED SHOWN FOR REFERENCE ONLY
- ⊠ SECTION CORNER NOT SEARCHED SHOWN FOR REFERENCE ONLY
- ⑩ POINT NUMBER
- {XXX.XX'} GROUND DISTANCE
- {XXX.XX'} RECORD DISTANCE PER REFERENCED SURVEY
- R1 REFERENCED SURVEY
- RM REFERENCE MONUMENT
- W.M. WILLAMETTE MERIDIAN
- PROPOSED ALIGNMENT
- - - - - TEMPORARY CONSTRUCTION EASEMENT
- - - - - TEMPORARY WORK AREA

### REFERENCE SURVEYS:

- 1) GLO PLAT T. 35 S., R. 2 E. - JULY 7, 1856
- 2) GLO PLAT T. 36 S., R. 2 E. - JULY 30, 1855
- 3) SURVEY NO. 10663 - AUGUST 1986
- 4) SURVEY NO. 4601 - AUGUST 1971
- 5) BLM DEPENDENT RESURVEY NO. 1956 - SEPT. 26, 1960
- 6) SURVEY NO. 15330 - MARCH 27, 1997

### CORNER NOTES:

- (140466)  
REFERENCE NO. GCDB 300140  
1/4 CORNER COMMON TO SECTIONS 32/33  
FOUND 2-1/2" BRASS CAP  
STAMPED CS 1989  
BT REFERENCES:  
1) SET NEW BEARING TREE  
7" OAK (SCRIBED X BT)  
SET TAG DATED 11/13  
S 80° E - 143.5'  
2) SET NEW BEARING TREE  
4" OAK (SCRIBED X BT)  
SET TAG DATED 11/13  
S 36° W - 144.2'
- (140467)  
REFERENCE NO. GCDB 200140  
1/4 CORNER COMMON TO SECTIONS 31/32  
FOUND 2-1/2" BRASS CAP  
STAMPED JACKSON COUNTY 1974  
BT REFERENCES:  
1) FOUND 9.5" OAK  
FOUND S 54° E - 24.8'  
(RECORD 7" W. OAK - S 54°53' E, 24.84')  
2) FOUND 6.5" OAK  
FOUND S 32° W - 64.4'  
(RECORD 4" W. OAK - S 32°03' W, 64.35')  
3) FOUND 17" OAK SNAG  
FOUND N 11° W - 58.7'  
(RECORD 12" W. OAK - N 11° W, 58.74')

REGISTERED  
PROFESSIONAL  
LAND SURVEYOR

Douglas G. Poppleman  
OREGON  
JULY 14, 1988  
DOUGLAS A. POPHAM  
2877  
Expires 12-31-2018

CERTIFIED  
FEDERAL SURVEYOR  
1245  
Expires June 5, 2017

REGISTERED  
PROFESSIONAL  
LAND SURVEYOR

Michael W. Erickson  
OREGON  
JULY 28, 1988  
MICHAEL W. ERICKSON  
2340  
Expires 12-31-2015

REGISTERED  
PROFESSIONAL  
LAND SURVEYOR

James M. Klein  
OREGON  
JULY 12, 2008  
JAMES M. KLEIN  
59002  
Expires 6-30-2017

**KA**  
Klein & Associates, Inc.

ENGINEERING • SURVEYING • PLANNING  
1411 13th Street - Hood River, OR 97031  
TEL: 541-386-3322 • FAX: 541-386-2515

Primm Land Surveying, Inc.  
1340 NE 4th Street, Hermiston, OR 97838  
TEL (541) 564-7887 FAX (541) 567-8020

**D** THE DYER PARTNERSHIP  
ENGINEERS & PLANNERS, INC.  
1330 Teakwood Avenue / Coos Bay, Oregon 97420  
(541) 269-0732 / WWW.DYERPART.COM

PACIFIC CONNECTOR GAS PIPELINE PROJECT  
PACIFIC CONNECTOR GAS PIPELINE, LP  
MAP OF SURVEY  
SECTION 32  
TOWNSHIP 35 SOUTH, RANGE 2 EAST, W.M.  
JACKSON COUNTY, OREGON

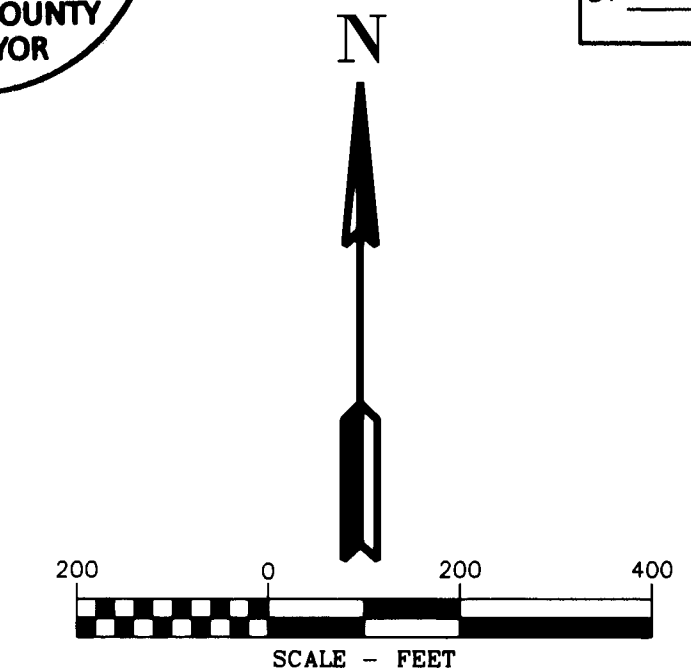
DRAWN BY: LJS DATE: 04-24-2015 ISSUED FOR BID: SCALE: 1" = 200'  
CHECKED BY: DATE: ISSUED FOR CONSTRUCTION:  
APPROVED BY: DATE: DRAWING NUMBER: SHEET 4 OF 5

# MAP OF SURVEY

LOCATED IN  
SECTION 29, TOWNSHIP 35 SOUTH,  
RANGE 2 EAST, WILLAMETTE MERIDIAN  
JACKSON COUNTY, OREGON

**FILED**  
Date 8/5/15 By PB  
This Survey Consists Of:  
5 sheet(s) Map  
6 page(s) Narrative  
JACKSON COUNTY  
SURVEYOR

JACKSON COUNTY  
SURVEYOR'S OFFICE  
SURVEY NO. 21778  
FILED 8/5/15  
BY PB



AREA SECTION 29 T. 35S. R. 2E.

TEMPORARY CONSTRUCTION EASEMENT	7.85 ACRES
TEMPORARY WORK AREA	4.90 ACRES

**LINE TABLE**

Line #	Direction	Length
L1	S50°34'37"E	558.95'
L2	S37°52'28"E	646.59'
L3	S51°25'40"W	35.00'
L4	S37°52'28"E	100.01'
L5	N51°25'40"E	28.25'
L6	S38°34'20"E	146.45'
L7	S46°09'16"E	238.49'
L8	S43°50'43"W	30.00'
L9	S46°09'38"E	100.00'
L10	N43°50'44"E	29.99'
L11	S46°09'16"E	77.71'
L12	N43°50'44"E	20.00'
L13	S01°08'58"E	14.14'
L14	S46°08'58"E	52.55'
L15	N88°51'02"E	14.14'
L16	S82°16'27"W	12.76'
L17	N46°08'58"W	32.92'
L18	N02°02'22"E	13.42'
L19	N31°11'26"E	25.61'
L20	S46°09'12"E	183.39'
L21	S07°54'26"W	30.88'
L22	S46°08'58"E	29.58'
L23	N07°41'46"E	25.26'
L24	S46°06'50"E	547.96'
L25	N43°50'43"E	5.00'
L26	S46°06'56"E	94.63'
L27	S01°01'08"W	99.78'
L28	S46°01'08"W	14.14'
L29	S01°01'08"W	600.75'
L30	N88°58'52"W	15.00'
L31	N21°53'10"E	53.94'
L32	N46°09'21"W	243.96'
L33	S07°54'20"W	61.76'
L34	S46°08'58"E	30.29'
L35	N07°41'59"E	61.92'
L36	N46°09'15"W	440.89'
L37	N01°01'08"E	64.08'
L38	N43°58'52"W	70.71'

**CORNER NOTES:**

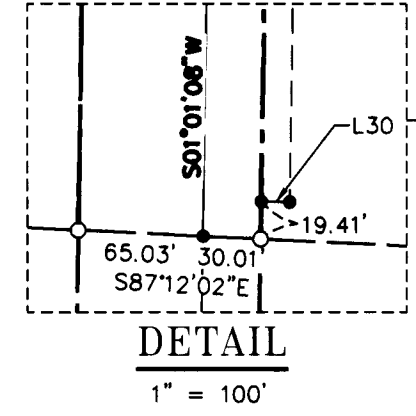
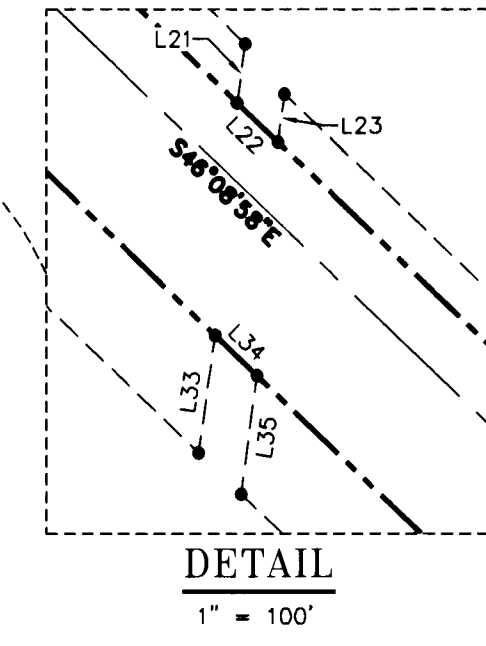
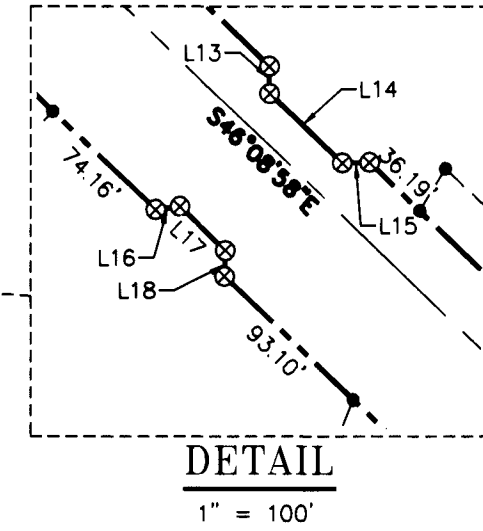
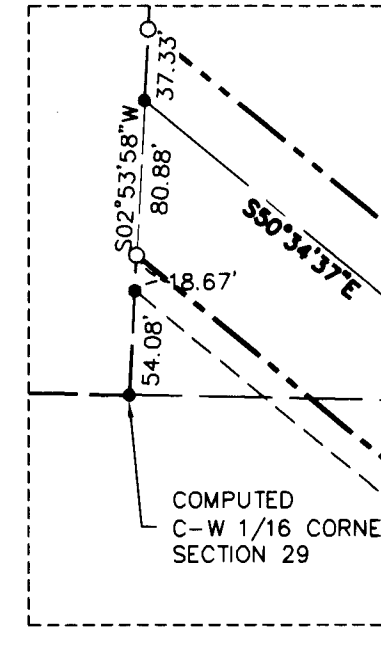
- (140476)**  
REFERENCE NO. C.S. 10663  
1/4 CORNER COMMON TO SECTIONS 29/30  
FOUND 1-1/2" ALUMINUM CAP IN MOUND OF STONES  
STAMPED JACSON COUNTY 1974  
BT REFERENCES:  
1) FOUND 12" OAK SNAG WITH VISIBLE SCRIBES  
FOUND S 88° E - 52.3'  
WITH TAG DATED 10/85  
(RECORD 12" OAK - N 85°23' E, 52.3')  
2) FOUND 8" OAK  
WITH TAG DATED 11/13  
S 83° W - 24.5'  
(NO RECORD FOUND)
- (140477)**  
REFERENCE NO. C.S. 10663  
CENTER 1/4 CORNER SECTION 29  
FOUND 1-1/2" ALUMINUM CAP IN MOUND OF STONES  
STAMPED LS 1086  
BT REFERENCES:  
1) FOUND 13" OAK WITH HEALED FACE  
FOUND N 56° E - 23.8'  
WITH TAG DATED 5/86  
(NO RECORD FOUND)  
2) FOUND 9" OAK WITH HEALED FACE  
WITH TAG DATED 5/86  
S 22° E - 31.5'  
(NO RECORD FOUND)
- (140478)**  
REFERENCE NO. GCDB 240200  
1/4 CORNER COMMON TO SECTIONS 29/32  
FOUND 2-1/2" BRASS CAP  
STAMPED JACSON COUNTY 1974  
BT REFERENCES:  
1) FOUND 15.5" OAK  
WITH TAG DATED 6/74  
FOUND S 12° E - 132'  
(RECORD 16" OAK - S 12° E, 132.00')  
2) FOUND 9.5" OAK  
S 23° W - 133.0'  
(RECORD 7" W. OAK - S 23° W, 132.98')  
3) FOUND 12" OAK  
WITH TAG DATED 6/74  
FOUND N 48° W - 53.7'  
(RECORD 7" W. OAK - N 48° W, 53.7')
- (140479)**  
REFERENCE NO. GCDB 300200  
NE CORNER OF SECTION 32  
FOUND 2-1/2" BRASS CAP  
STAMPED CS 1973  
BT REFERENCES:  
1) FOUND 7" OAK  
FOUND N 45° E - 24.6'  
(RECORD 4" W. OAK - N 44-1/2° E, 24.56')  
2) FOUND 7.5" CEDAR DEAD AND DOWN WITH  
VISIBLE SCRIBES  
S 63° E - 47.0'  
(RECORD 7" CEDAR - S 68° E, 47.6')  
3) FOUND 19" P. PINE  
FOUND S 49° W - 22.9'  
(RECORD 9" P. PINE - S 49° W, 22.9')  
4) FOUND 9" OAK  
FOUND N 73° W, 30.7'  
(RECORD 6" W. OAK - N 73° W, 30.65')

**LEGEND**

- SET 5/8" X 24" REBAR WITH 1 1/4" YELLOW PLASTIC CAP (KLEIN & ASSOC. PLS 59002)
- ⊙ SET 5/8" X 24" REBAR WITH 1 1/4" YELLOW PLASTIC CAP (DYER PARTNER LS 2340)
- COMPUTED POINT, NOT MONUMENTED
- ⊕ FOUND MONUMENT AS NOTED, SEE CORNER NOTES.
- ⊗ FOUND QUARTER CORNER SEE CORNER NOTES
- ⊕ FOUND SECTION CORNER SEE CORNER NOTES
- ⊕ FOUND CLOSING CORNER SEE CORNER NOTES
- ⊗ QUARTER CORNER NOT SEARCHED SHOWN FOR REFERENCE ONLY
- ⊗ SECTION CORNER NOT SEARCHED SHOWN FOR REFERENCE ONLY
- (100000) POINT NUMBER
- {XXX.XX'} GROUND DISTANCE
- {XXX.XX'} RECORD DISTANCE PER REFERENCED SURVEY
- R1 REFERENCED SURVEY
- RM REFERENCE MONUMENT
- W.M. WILLAMETTE MERIDIAN
- PROPOSED ALIGNMENT
- - - - - TEMPORARY CONSTRUCTION EASEMENT
- - - - - TEMPORARY WORK AREA

**REFERENCE SURVEYS:**

- 1) QLO PLAT T. 35 S., R. 2 E. - JULY 7, 1856
- 2) QLO PLAT T. 36 S., R. 2 E. - JULY 30, 1855
- 3) SURVEY NO. 10663 - AUGUST 1986
- 4) SURVEY NO. 4601 - AUGUST 1971
- 5) BLM DEPENDENT RESURVEY NO. 1956 - SEPT. 26, 1960
- 6) SURVEY NO. 15330 - MARCH 27, 1997



REGISTERED PROFESSIONAL LAND SURVEYOR  
Douglas A. Popham  
OREGON JULY 14, 1998  
DOUGLAS A. POPHAM 2877  
Expires 12-31-2016

CERTIFIED FEDERAL SURVEYOR  
1245  
Expires June 5, 2017

REGISTERED PROFESSIONAL LAND SURVEYOR  
MICHAEL W. ERICKSON 2340  
Expires 12-31-2015

REGISTERED PROFESSIONAL LAND SURVEYOR  
James M. Klein  
OREGON JULY 12, 2005  
JAMES M. KLEIN 59002  
Expires 6-30-2017

**KA**  
Klein & Associates, Inc.  
ENGINEERING • SURVEYING • PLANNING  
1411 15th Street - Hood River, OR 97031  
TEL: 541-386-3322 FAX: 541-386-2515

Primm Land Surveying, Inc.  
1340 NE 4th Street, Hermiston, OR 97838  
TEL (541) 564-7887 FAX (541) 567-8020

**D** THE DYER PARTNERSHIP ENGINEERS & PLANNERS, INC.  
1330 Teakwood Avenue / Coos Bay, Oregon 97420  
(541) 269-0732 / WWW.DYERPART.COM

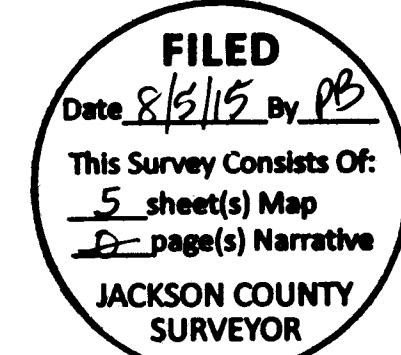
PACIFIC CONNECTOR GAS PIPELINE PROJECT  
PACIFIC CONNECTOR GAS PIPELINE, LP  
MAP OF SURVEY  
SECTION 29  
TOWNSHIP 35 SOUTH, RANGE 2 EAST, W.M.  
JACKSON COUNTY, OREGON

**Pacific Connector GAS PIPELINE**

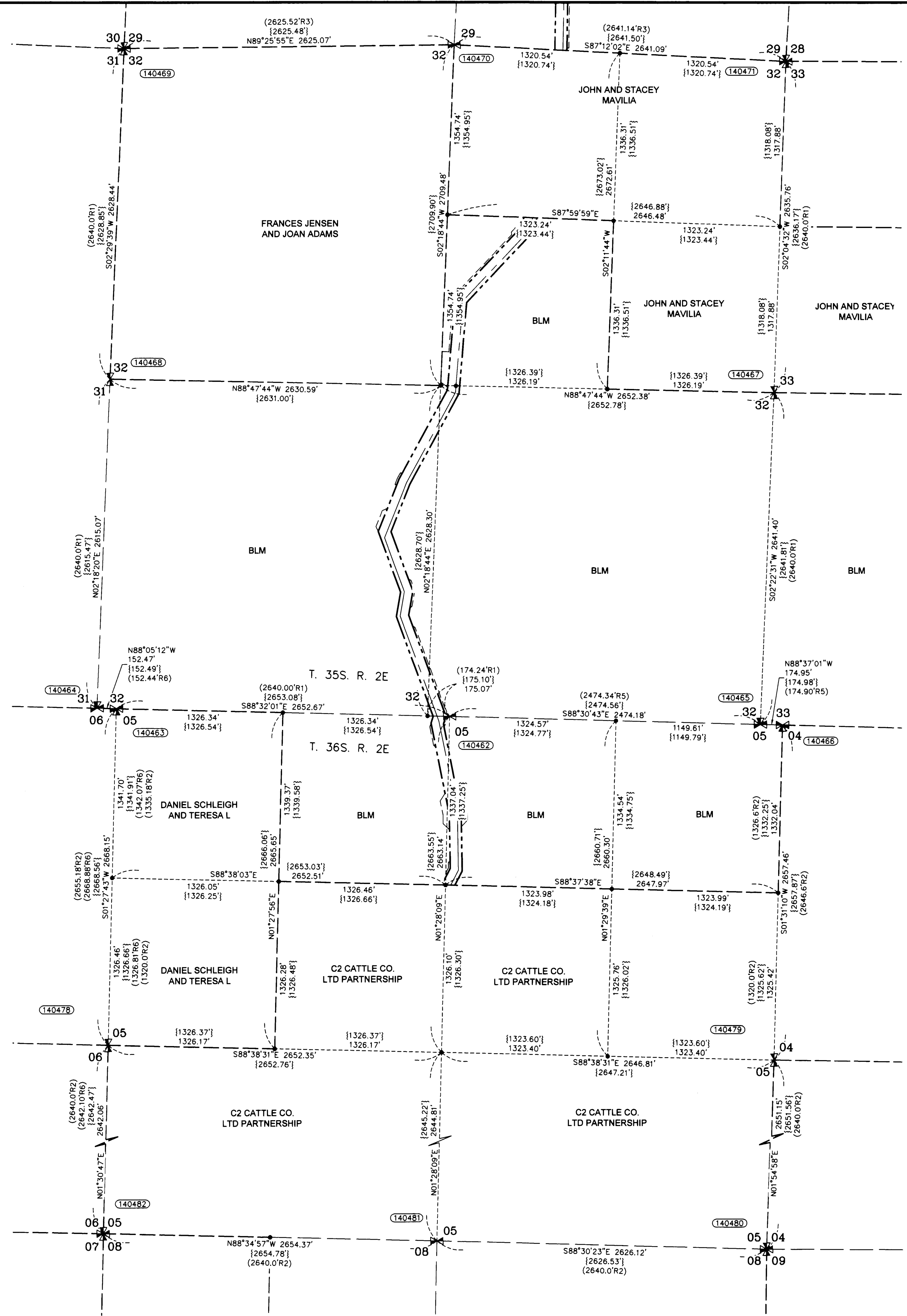
DRAWN BY: LJS	DATE: 04-24-2015	ISSUED FOR BID:	SCALE: 1" = 200'
CHECKED BY:	DATE:	ISSUED FOR CONSTRUCTION:	
APPROVED BY:	DATE:	DRAWING NUMBER:	SHEET 3 OF 5

# MAP OF SURVEY

LOCATED IN SECTION 32, TOWNSHIP 35 SOUTH, RANGE 2 EAST, WILLAMETTE MERIDIAN AND SECTION 5, TOWNSHIP 36 SOUTH, RANGE 2 EAST, WILLAMETTE MERIDIAN JACKSON COUNTY, OREGON



JACKSON COUNTY SURVEYOR'S OFFICE  
SURVEY NO. 21778  
FILED 8/5/15  
BY PB



### CORNER NOTES:

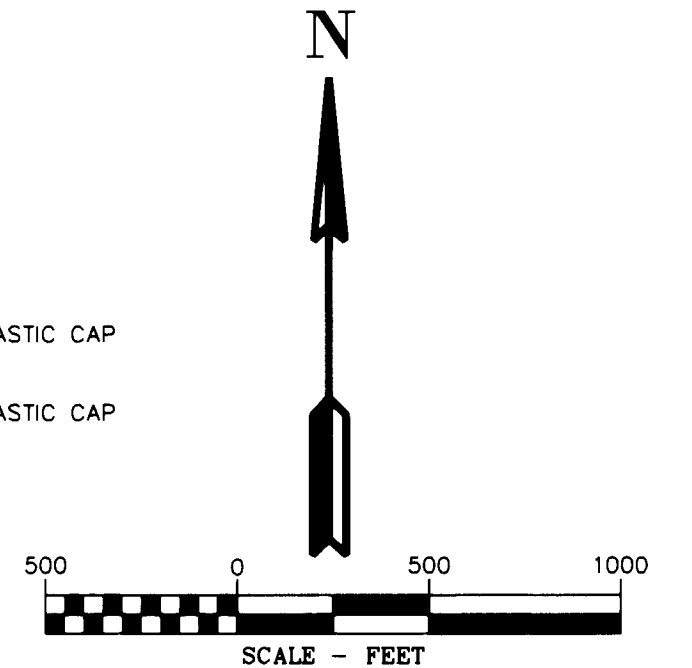
- (140462)** REFERENCE NO. GCDB 240700 NORTH 1/4 CORNER SECTION 5 FOUND 3-1/4" BRASS CAP STAMPED BLM 1988 BT REFERENCES: 1) FOUND 15" OAK SET TAG DATED 11/13 FOUND S 68° E - 32.2' (RECORD 11" W. OAK, S 68° E, 32.34')
- (140463)** REFERENCE NO. GCDB 200700 NW CORNER SECTION 5 FOUND 2-1/2" BRASS CAP STAMPED CS 1968 BT REFERENCES: 1) FOUND 11" OAK FOUND N 53-3/4° E - 70.5' (RECORD 7" W. OAK, N 53-3/4° E - 69.9')
- (140464)** REFERENCE NO. GCDB 200100 STANDARD CORNER OF SECTIONS 31 AND 32 FOUND 2-1/2" BRASS CAP IN MOUND OF STONES STAMPED C.C. C.S. 1988 BT REFERENCES: 1) FOUND 13" OAK FOUND N 40° E - 72.3' (RECORD 12" W. OAK - N 36-1/4° E, 71.4')
- (140465)** REFERENCE NO. GCDB 200200 NW CORNER OF SECTION 32 FOUND 2-1/2" BRASS CAP STAMPED JACKSON COUNTY 1974 BT REFERENCES: 1) FOUND 8" OAK FOUND N 47° E - 46.8' (RECORD 6" W. OAK - N 47°14' E, 46.78')
- (140466)** REFERENCE NO. GCDB 200640 1/4 CORNER COMMON TO SECTIONS 5/6 FOUND 2-1/2" BRASS CAP STAMPED JACKSON COUNTY SURVEYOR 2002 BT REFERENCES: 1) FOUND 13.5" OAK WITH VISIBLE SCRIBE FOUND N 21-1/2° E - 38.2' (RECORD 10" W. OAK - N 21-1/2° E, 38.8')
- (140467)** REFERENCE NO. GCDB 200640 1/4 CORNER COMMON TO SECTIONS 5/6 FOUND 2-1/2" BRASS CAP STAMPED JACKSON COUNTY SURVEYOR 2002 BT REFERENCES: 1) FOUND 10" OAK WITH VISIBLE SCRIBE FOUND N 21-1/2° E, 38.8' (RECORD 10" W. OAK - N 21-1/2° E, 38.8')
- (140468)** REFERENCE NO. GCDB 200640 1/4 CORNER COMMON TO SECTIONS 5/6 FOUND 2-1/2" BRASS CAP STAMPED JACKSON COUNTY SURVEYOR 2002 BT REFERENCES: 1) FOUND 10" OAK WITH VISIBLE SCRIBES FOUND N 49-1/2° W - 31.3' (RECORD 9" W. OAK - S 49-1/2° W, 30.5')
- (140469)** REFERENCE NO. GCDB 200640 1/4 CORNER COMMON TO SECTIONS 4/5 FOUND 2-1/2" BRASS CAP STAMPED JACKSON COUNTY 1974 BT REFERENCES: 1) FOUND 9" OAK FOUND S 54° E - 13.1' TO CENTER (RECORD 7" W. OAK - S 54° E, 13.0' TO CENTER)
- (140470)** REFERENCE NO. GCDB 240200 1/4 CORNER COMMON TO SECTIONS 29/32 FOUND 2-1/2" BRASS CAP STAMPED JACKSON COUNTY 1974 BT REFERENCES: 1) FOUND 15.5" OAK WITH TAG DATED 6/74 FOUND S 52° E - 106.9' (RECORD 9" OAK - S 52°01' W, 106.4')
- (140471)** REFERENCE NO. GCDB 300200 NE CORNER OF SECTION 32 FOUND 2-1/2" BRASS CAP STAMPED CS 1973 BT REFERENCES: 1) FOUND 7" OAK FOUND N 45° E - 24.6' (RECORD 4" W. OAK - N 44-1/2° E, 24.56')
- (140472)** REFERENCE NO. GCDB 300200 NE CORNER OF SECTION 32 FOUND 2-1/2" BRASS CAP STAMPED CS 1973 BT REFERENCES: 1) FOUND 7" OAK WITH TAG DATED 1956 FOUND S 58° E - 53.9' (RECORD 7" OAK, S 58° E, 54.1')
- (140473)** REFERENCE NO. GCDB 200640 1/4 CORNER COMMON TO SECTIONS 5/6 FOUND 2-1/2" BRASS CAP STAMPED JACKSON COUNTY SURVEYOR 2002 BT REFERENCES: 1) FOUND 13" B. OAK WITH HEALED FACE FOUND S 84° E - 41.7' (RECORD 14" B. OAK - S 84° E, 41.4')
- (140474)** REFERENCE NO. GCDB 200640 1/4 CORNER COMMON TO SECTIONS 5/6 FOUND 2-1/2" BRASS CAP STAMPED CS 1983 BT REFERENCES: 1) FOUND 11" W. OAK FOUND N 6° E - 90.5' (RECORD 8" W. OAK - N 5°49' E, 90.50')
- (140475)** REFERENCE NO. GCDB 200640 1/4 CORNER COMMON TO SECTIONS 4/5 FOUND 2-1/2" BRASS CAP STAMPED JACKSON COUNTY 1974 BT REFERENCES: 1) FOUND 9" OAK FOUND S 54° E - 13.1' TO CENTER (RECORD 7" W. OAK - S 54° E, 13.0' TO CENTER)
- (140476)** REFERENCE NO. GCDB 200640 1/4 CORNER COMMON TO SECTIONS 4/5 FOUND 2-1/2" BRASS CAP STAMPED JACKSON COUNTY 1974 BT REFERENCES: 1) FOUND 9" OAK FOUND S 54° E - 13.1' TO CENTER (RECORD 7" W. OAK - S 54° E, 13.0' TO CENTER)
- (140477)** REFERENCE NO. GCDB 200640 1/4 CORNER COMMON TO SECTIONS 4/5 FOUND 2-1/2" BRASS CAP STAMPED JACKSON COUNTY 1974 BT REFERENCES: 1) FOUND 9" OAK FOUND S 54° E - 13.1' TO CENTER (RECORD 7" W. OAK - S 54° E, 13.0' TO CENTER)
- (140478)** REFERENCE NO. GCDB 200640 1/4 CORNER COMMON TO SECTIONS 4/5 FOUND 2-1/2" BRASS CAP STAMPED JACKSON COUNTY 1974 BT REFERENCES: 1) FOUND 9" OAK FOUND S 54° E - 13.1' TO CENTER (RECORD 7" W. OAK - S 54° E, 13.0' TO CENTER)
- (140479)** REFERENCE NO. GCDB 200640 1/4 CORNER COMMON TO SECTIONS 4/5 FOUND 2-1/2" BRASS CAP STAMPED JACKSON COUNTY 1974 BT REFERENCES: 1) FOUND 9" OAK FOUND S 54° E - 13.1' TO CENTER (RECORD 7" W. OAK - S 54° E, 13.0' TO CENTER)
- (140480)** REFERENCE NO. GCDB 200640 1/4 CORNER COMMON TO SECTIONS 4/5 FOUND 2-1/2" BRASS CAP STAMPED JACKSON COUNTY 1974 BT REFERENCES: 1) FOUND 9" OAK FOUND S 54° E - 13.1' TO CENTER (RECORD 7" W. OAK - S 54° E, 13.0' TO CENTER)
- (140481)** REFERENCE NO. GCDB 240600 1/4 CORNER COMMON TO SECTIONS 5/8 FOUND 2-1/2" BRASS CAP STAMPED CS 1983 BT REFERENCES: 1) FOUND 11" W. OAK FOUND N 6° E - 90.5' (RECORD 8" W. OAK - N 5°49' E, 90.50')
- (140482)** REFERENCE NO. GCDB 200600 SW CORNER SECTION 5 FOUND 2-1/2" BRASS CAP SET IN CONCRETE STAMPED CS 1983 BT REFERENCES: 1) FOUND 11" W. OAK FOUND N 6° E - 90.5' (RECORD 8" W. OAK - N 5°49' E, 90.50')
- (140483)** REFERENCE NO. GCDB 200600 SW CORNER SECTION 5 FOUND 2-1/2" BRASS CAP SET IN CONCRETE STAMPED CS 1983 BT REFERENCES: 1) FOUND 11" W. OAK FOUND N 6° E - 90.5' (RECORD 8" W. OAK - N 5°49' E, 90.50')

### REFERENCE SURVEYS:

- 1) GLO PLAT T. 35 S., R. 2 E. - JULY 7, 1856
- 2) GLO PLAT T. 36 S., R. 2 E. - JULY 30, 1855
- 3) SURVEY NO. 10663 - AUGUST 1986
- 4) SURVEY NO. 4601 - AUGUST 1971
- 5) BLM DEPENDENT RESURVEY NO. 1956 - SEPT. 26, 1960
- 6) SURVEY NO. 15330 - MARCH 27, 1997

### LEGEND

- SET 5/8" X 24" REBAR WITH 1 1/4" YELLOW PLASTIC CAP (KLEIN & ASSOC. PLS 59002)
- ⊗ SET 5/8" X 24" REBAR WITH 1 1/4" YELLOW PLASTIC CAP (DYER PARTNER LS 2340)
- COMPUTED POINT, NOT MONUMENTED
- ⊙ FOUND MONUMENT AS NOTED, SEE CORNER NOTES
- ⊗ FOUND QUARTER CORNER SEE CORNER NOTES
- ⊗ FOUND SECTION CORNER SEE CORNER NOTES
- ⊗ FOUND CLOSING CORNER SEE CORNER NOTES
- ⊗ QUARTER CORNER NOT SEARCHED SHOWN FOR REFERENCE ONLY
- ⊗ SECTION CORNER NOT SEARCHED SHOWN FOR REFERENCE ONLY
- ① POINT NUMBER
- {XXX.XX'} GROUND DISTANCE
- (XXX.XX') RECORD DISTANCE PER REFERENCED SURVEY
- R1 REFERENCED SURVEY
- RM REFERENCE MONUMENT
- W.M. WILLAMETTE MERIDIAN
- PROPOSED ALIGNMENT
- - - - - TEMPORARY CONSTRUCTION EASEMENT
- - - - - TEMPORARY WORK AREA



**D THE DYER PARTNERSHIP ENGINEERS & PLANNERS, INC.**  
1330 Teakwood Avenue / Coos Bay, Oregon 97420  
(541) 269-0732 / WWW.DYERPART.COM

**Primm Land Surveying, Inc.**  
1340 NE 4th Street, Hermiston, OR 97838  
TEL (541) 564-7887 FAX (541) 567-8020

**Klein & Associates, Inc.**  
ENGINEERING • SURVEYING • PLANNING  
1411 13th Street • Hood River, OR 97031  
TEL: 541-386-3322 • FAX: 541-386-2016

PACIFIC CONNECTOR GAS PIPELINE PROJECT PACIFIC CONNECTOR GAS PIPELINE, LP MAP OF SURVEY SECTION 32, T35S., R02E, W.M. SECTION 5, T36S., R02E, W.M. JACKSON COUNTY, OREGON				
DRAWN BY: LJS	DATE: 04-24-2015	ISSUED FOR BID:	SCALE: 1" = 500'	
CHECKED BY:	DATE:	ISSUED FOR CONSTRUCTION:		SHEET 2 OF 5
APPROVED BY:	DATE:	DRAWING NUMBER:		