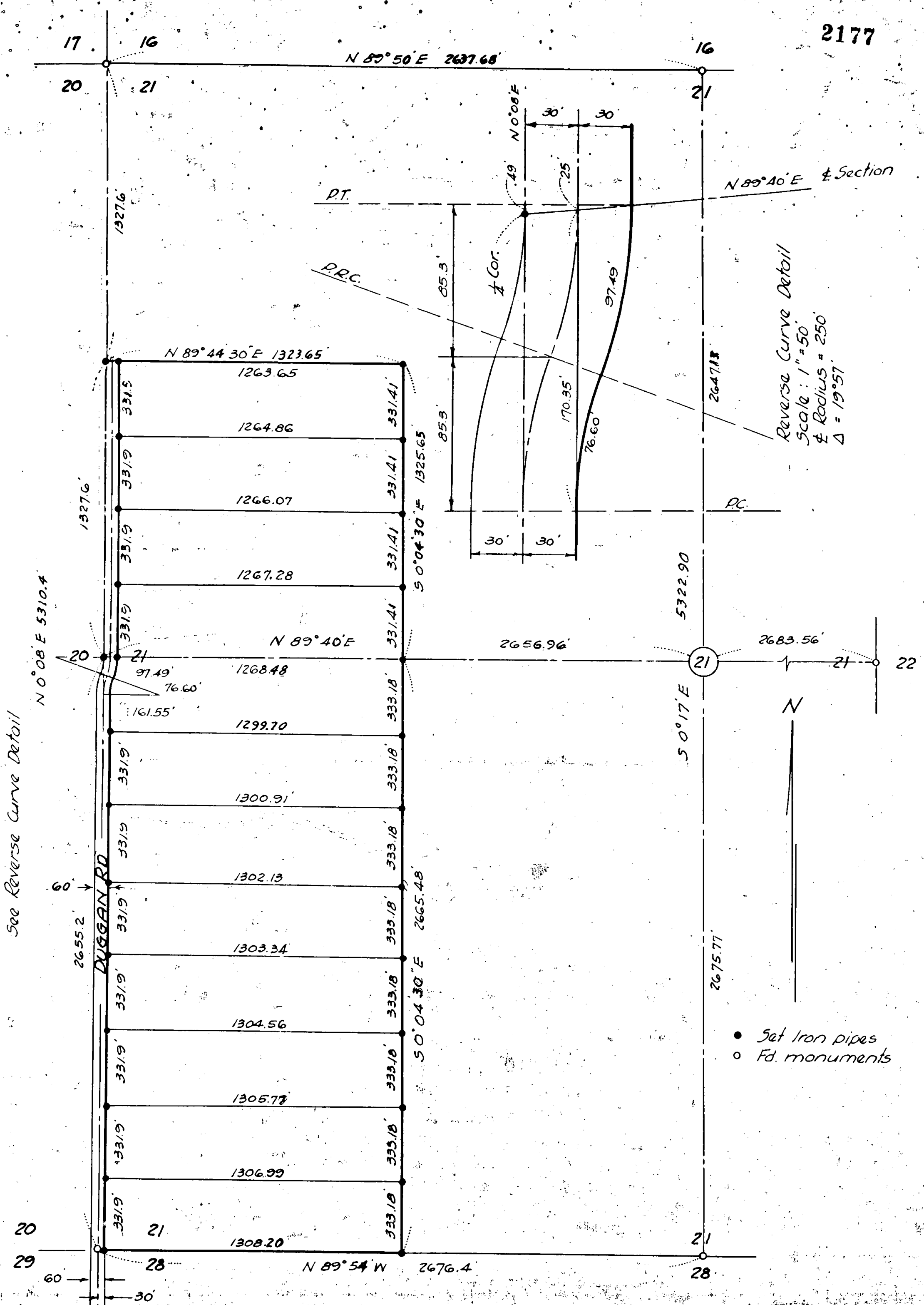


6612

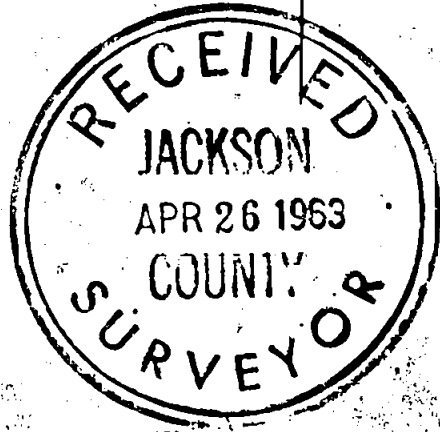
2177



See Reverse Curve Detail

Reverse Curve Detail
 Scale: 1" = 50'
 Δ Radius = 250'
 Δ = 19° 57'

- Set Iron pipes
- Fd. monuments



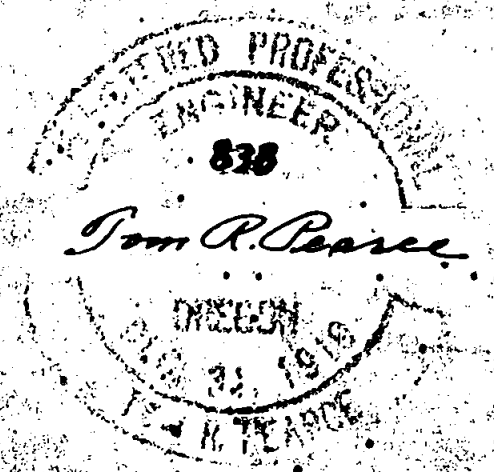
2177

FRUITFUL VALLEY FARMS
 FAYDREX, INC.

SEC. 21, T. 35S, R. 2W, W.M.

Scale: 1" = 400'

April, 1962



Survey Narrative, to comply with Paragraph 209.250 ORS

Survey for Faydrex, Inc., 843 East Main St., Medford, Oregon

Purpose: To survey "Fruitful Valley Farms" located in Section 21, T35S, R2W, WM, and to divide into 12 parcels.

Procedure: Survey was started Feb. 8th, 1962. Solar observation was not made on that date, due to weather conditions, but was made at a later date. The corner common to Sections 20, 21, 28, 29 was found, supported by 3 bearing trees. Thence running North, on a random line and along the center line of Duggan Road, 1/2 mile. We found no evidence of a re-established corner or witness trees. Thence continuing North along said line, 1/2 mile, I found the corner for Sections 16, 17, 20, 21. There were the remains of oak and pine stumps with scribes visible. A wooden stake was set at the corner. Solar observation was made and the true bearing and distance from the Southwest corner of Section 21 was determined to be North 0° 08' East 5310.4 feet. Then from the Section corner of Sections 20, 21, 28, 29 I ran on a true line, North 0° 08' East 2655.2 feet to the 1/4 corner of Sections 20 and 21 and set a 1/2 inch galv. iron pipe flush with the ground and scribed:

14" Fir S 84° W 25.7 feet
 8" Pine N 47° 30' E 60.8 feet

Thence North 0° 08' East 1327.6 feet to the N 1/16th corner.
 Scribed: 6" Laurel N 33° 15' E 6.5 feet
 10" Laurel N 25° 15' W 35.2 feet

I proceeded to the Northwest corner of Section 21 and ran East, on a random line, to the North 1/4 corner of Section 21. Found the corner and witness trees, the same as recorded as re established corners, in the records of the County Surveyor. I computed the true line to be North 89° 50' East 2637.68 feet.

I proceeded to the Southwest corner of Section 21 and ran on a true line South 89° 53' East 2676.4 feet to the South 1/4 corner of Section 21. Found a yellow pine stump, with scribe visible, bearing North 87° West 170 links. Midway between the two points at the W 1/16 cor 21/28, I set a 1/2" Galv. Iron pipe,
 Scribed: 5" White Oak bearing S 60° 30' E. 4.4 feet
 12" White Oak bearing N 30° 15' E. 61.5 feet

I ran a straight line from the South 1/4 corner of Section 21 to the North 1/4 corner of Section 21 and found the distance to be 5322.90 feet.

I proceeded to the West 1/4 corner of Section 21 and ran N 89° 40' East on a straight line to the East 1/4 corner of Section 21. The distance was 5342.52 feet. Found the corner and witness trees the same as recorded in re-established corners.

At the intersection of the two center lines, I set a 2" Galv. iron pipe and scribed C 1/4 the following:

20" White Oak N 15° 15' E 56.6 feet
 10" White Oak S 28° 45' E 50.2 feet
 8" White Oak S 77° 30' W 89.1 feet
 18" White Oak N 66° 15' W 104.9 feet

Using these points as a base for the survey, calculations were made for the boundary of the land. Monuments were set, as shown on the accompanying map.

