

Map of Survey

**Location Survey of the Southerly Runway
Protection Zone of Runway 14-32; Rogue Valley
International Airport, Medford Oregon
T37S R1W, W.M. in the SW & SE 1/4 of Section 7
and the NW & 1/4 of Section 18
Jackson County, Oregon**

Survey For:
Jackson County Airport Authority
1000 Terminal Loop Parkway
Medford, OR 97504

Survey Narrative to comply with ORS 209.250



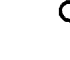

Purpose: To locate the physical marks that define the centerline of runway 14-32. Fix the location of the Runway Protection Zone per Federal Aviation Administration 5010 reporting requirements. Derive repeatable Geodetic positions on the runway centerline monuments. Establish geodetic positions and OCRS Grants Pass-Ashland Zone map projected rectangular coordinates of the corners of the current and future Runway Protection Zone; monument said locations in the field.

Procedure: Utilizing Oregon Department of Transportation and Jackson County Surveyor Continuously Operating GPS Reference Stations (CORS) to establish project survey control on site within the proximity of the runway end points with Trimble R8 GPS receivers via static GPS methods. Post process said onsite control to the aforementioned CORS in Trimble Business Center V3.40, verify geometric integrity of the network via least squares methods at the 95% (2sigma) confidence level to +/- 0.10 feet horizontally. From said on site control terrestrial survey methods were deployed via a Trimble S6 robotic total station and an associated TSC3 data collector running Trimble Access software to position the monuments at the centerline of runway 14-32; redundant observations were made.

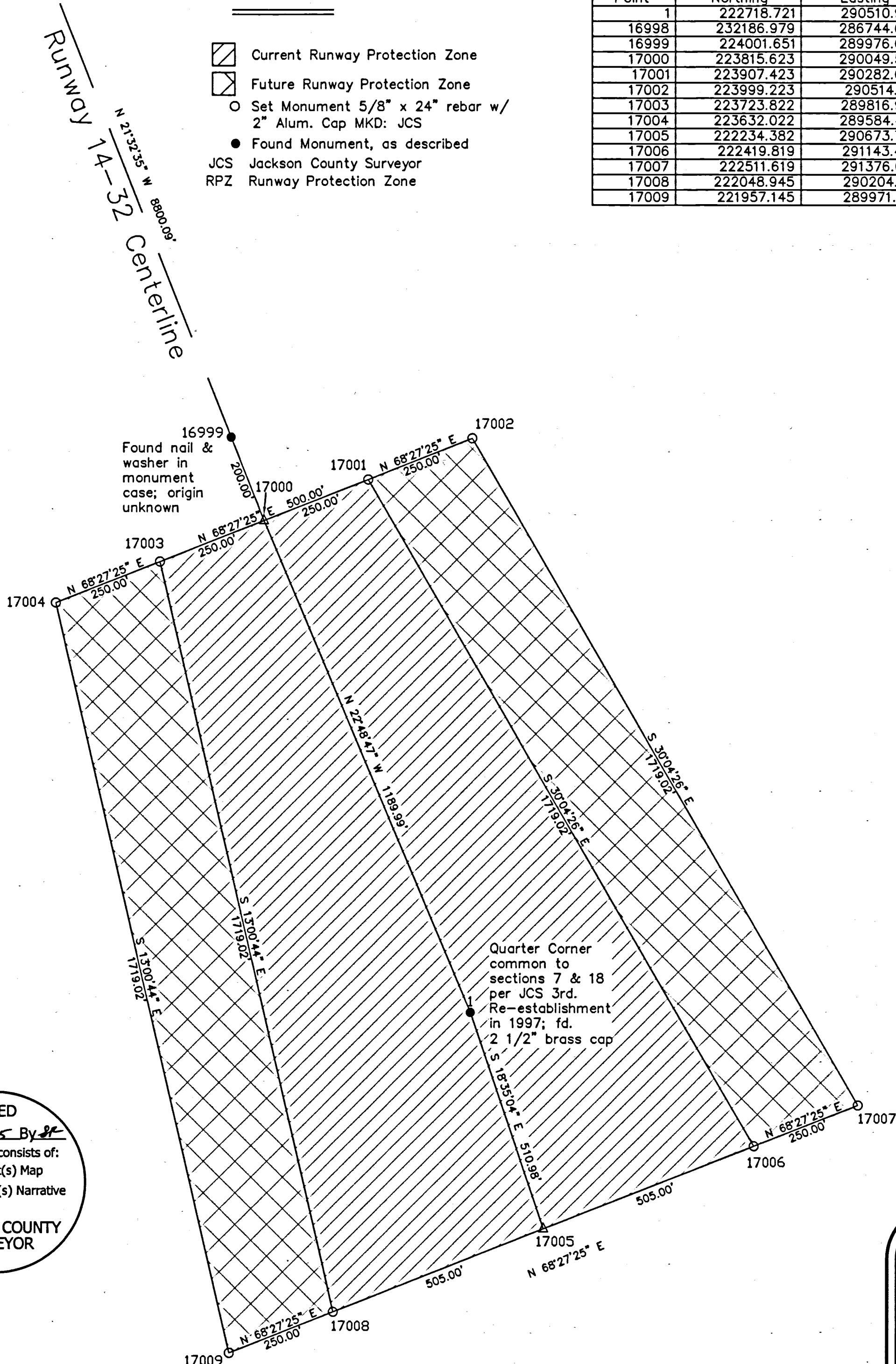
Upon fixing the position of the runway centerline monuments Mead & Hunt (Consultant to the Rogue Valley International Airport) provided a technical memorandum on July 6, 2015 documenting the Federal Aviation Administration dimensions and requirements for fixing the position the Runway Protection Zone. Based upon said document compute the location of the corners of the current and future Runway Protection Zone along with establishment of durable survey monuments in the field.

16998
Found brass cap
in monument
case; origin
unknown

LEGEND

-  Current Runway Protection Zone
-  Future Runway Protection Zone
-  Set Monument 5/8" x 24" rebar w/ 2" Alum. Cap MKD: JCS
-  Found Monument, as described
- JCS Jackson County Surveyor
- RPZ Runway Protection Zone

Point	Northing	Easting	Elevation	Description
1	222718.721	290510.920	1335.00	1/4 Cor. Sections 7 & 18
16998	232186.979	286744.685	1335.00	Runway 14-32 C/L- see map
16999	224001.651	289976.090	1335.00	Runway 14-32 C/L- see map
17000	223815.623	290049.530	1335.00	Runway 14-32 C/L @ N. Line RPZ
17001	223907.423	290282.065	1335.00	NE Current RPZ
17002	223999.223	290514.601	1335.00	NE Future RPZ
17003	223723.822	289816.995	1335.00	NW Current RPZ
17004	223632.022	289584.459	1335.00	NW Current RPZ
17005	222234.382	290673.772	1335.00	Runway 14-32 C/L @ S. Line RPZ
17006	222419.819	291143.494	1335.00	SE Current RPZ
17007	222511.619	291376.029	1335.00	SE Future RPZ
17008	222048.945	290204.051	1335.00	SW Current RPZ
17009	221957.145	289971.516	1335.00	SW Future RPZ



Scale: 1"=200'

Basis of Bearings:
Grid North per OCRS
Grants Pass-Ashland Zone
As Defined in OAR 734 derived from
NAD 1983 (2011) (Epoch 2010)
Distances are International Feet
Elevations are NAVD 88

REGISTERED
PROFESSIONAL
LAND SURVEYOR

Scott D. Fein

OREGON
NOVEMBER 10, 2010
SCOTT D. FEIN
83181

Renews 12/31/2015

FILED
Date 7/23/15 By SC
This survey consists of:
1 sheet(s) Map
0 page(s) Narrative
JACKSON COUNTY
SURVEYOR

Jackson County Surveyor
Scott D. Fein, PLS CWRE, CFEDS
(541) 774-6191 10 S. Oakdale Ave. Medford, OR 97501

Field work was performed July, 2015	Reviewed By: RHB 7/22/15
Field Staff: BWP, SMB, SDF	CS Job File: 2015-0213
Drawn By: SDF 7/21/15	Approved: SDF 7/22/15

RPZ South End 7-8-15.dwg