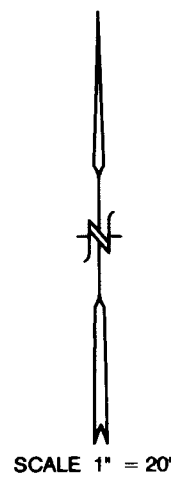
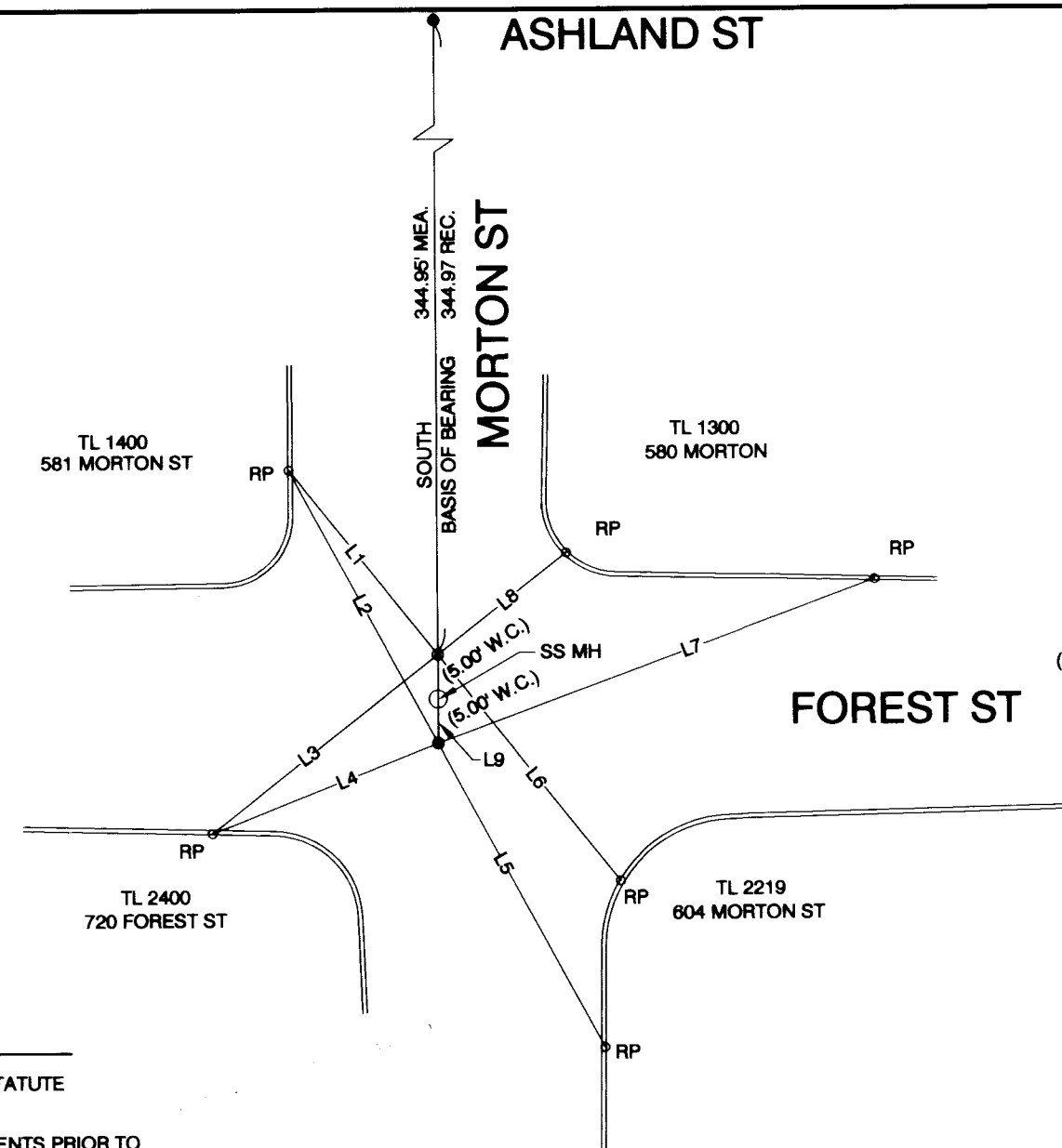


21682



LINE	BEARING - MON. TO RP	DISTANCE
L1	N 38° 46' 24" W	26.53'
L2	N 28° 25' 30" W	34.88'
L3	S 51° 44' 02" W	32.30'
L4	S 68° 26' 56" W	27.25'
L5	S 28° 25' 30" E	38.79'
L6	S 38° 46' 24" E	32.63'
L7	N 68° 26' 56" E	52.31'
L8	N 51° 44' 02" E	18.47'
L9	S 00° 05' 08" W	9.98'



MAP OF SURVEY
 FOR
CITY OF ASHLAND, ENGINEERING DIVISION
 20 EAST MAIN STREET, ASHLAND, OREGON 97520

LOCATED IN
 THE NE 1/4 OF SECTION 16
 TOWNSHIP 39 SOUTH, RANGE 1 EAST, WILLAMETTE MERIDIAN,
 CITY OF ASHLAND, JACKSON COUNTY, OREGON

- LEGEND**
- REFERENCE POINT (RP) ; SET LEAD PLUG IN 3/8" DRILL HOLE WITH TACK AND BRASS TAG MARKED "CITY OF ASHLAND" IN TOP OF CURB.
 - ⊙ SET 1" X 30" IRON PIPE W/3" DIAMETER BRASS CAP WITH PUNCH MARK STAMPED " CITY OF ASHLAND SURVEY MARKER " IN SURVEY MONUMENT CASE.
 - FOUND 3" BRASS CAP WITH DRILL HOLE STAMPED "CITY OF ASHLAND" IN MONUMENT CASE PER S/N 18993, 4205.

(XXX) RECORD

- NOTES**
1. ALL SET MONUMENTS ARE AT THE INTERSECTION OF REFERENCE POINTS.
 2. ALL DISTANCES ARE IN FEET AND DECIMALS THEREOF.

REGISTERED
 PROFESSIONAL
 LAND SURVEYOR

Bradley F. Barber

OREGON
 MARCH 18, 1997
 BRADLEY F. BARBER
 02806PLS
 EXPIRES 12-31-2015

SURVEY NARRATIVE

TO COMPLY WITH PARAGRAPH 209.250 OREGON REVISED STATUTE

PURPOSE: TO REFERENCE EXISTING CENTERLINE MONUMENTS PRIOR TO CONSTRUCTION ACTIVITIES AND TO REPLACE THE MONUMENT(S) AFTER CONSTRUCTION WAS COMPLETED. TO COMPLY WITH ORS209.140, AND 209.150.

BASIS OF BEARING: CENTERLINE OF MORTON STREET PER S/N 18993

PROCEDURE: SET LEAD PLUG AND TACK WITH TAG IN 3/8" DRILL HOLE IN TOP OF CURBS MARKED "CITY OF ASHLAND" ON TWO QUADRANTS OF INTERSECTION. OCCUPIED EACH LEAD AND TACK AND SET OPPOSING LEAD AND TACK BY EXTENDING LINE FROM MONUMENT TO TOP OF CURB. REFERENCE POINTS WERE ESTABLISHED SO THAT STRAIGHT LINES FROM OPPOSING REFERENCE MARKS ARE THE MONUMENT LOCATION. THE ORIGINAL MONUMENTS WERE REFERENCED DECEMBER 24, 2014 AND ENTERED IN CITY OF ASHLAND FIELD BOOK NO. 176 PAGE 141. THE MONUMENT WAS REPLACED MARCH 2, 2015. MONUMENT WAS RESET BY INTERSECTING THE TWO REFERENCE LINES FOR THE NORTHERLY MONUMENT. THE SOUTHERLY MONUMENT WAS NOT DISTURBED BY CONSTRUCTION OF THE NEW SEWER LINE AND MANHOLE. INSTRUMENT NIKON DTM-322 TOTAL STATION.

** RECEIVED **
 DATE 3/26/15 BY PB

This survey consists of:
1 sheet(s) Map
0 pages(s) Narrative

JACKSON COUNTY
 SURVEYOR

FILE H:\MORTON_FOREST SV MAP.DWG

CITY OF ASHLAND
 20 E. MAIN STREET
 ASHLAND, OREGON

DRAWN <u>BFB</u>	DATE <u>3-24-2015</u>
REVIEWED <u>SF</u>	DATE <u>3-24-2015</u>
REVIEWED <u>KJ</u>	DATE <u>3-24-2015</u>

PUBLIC WORKS ENGINEERING
 www.ashland.or.us 541-488-5587 fax 488-6006

DRAWING NO. 1 OF 1