

JACKSON COUNTY DEVELOPMENT SERVICES  
FILE NO. SUB2014-00022

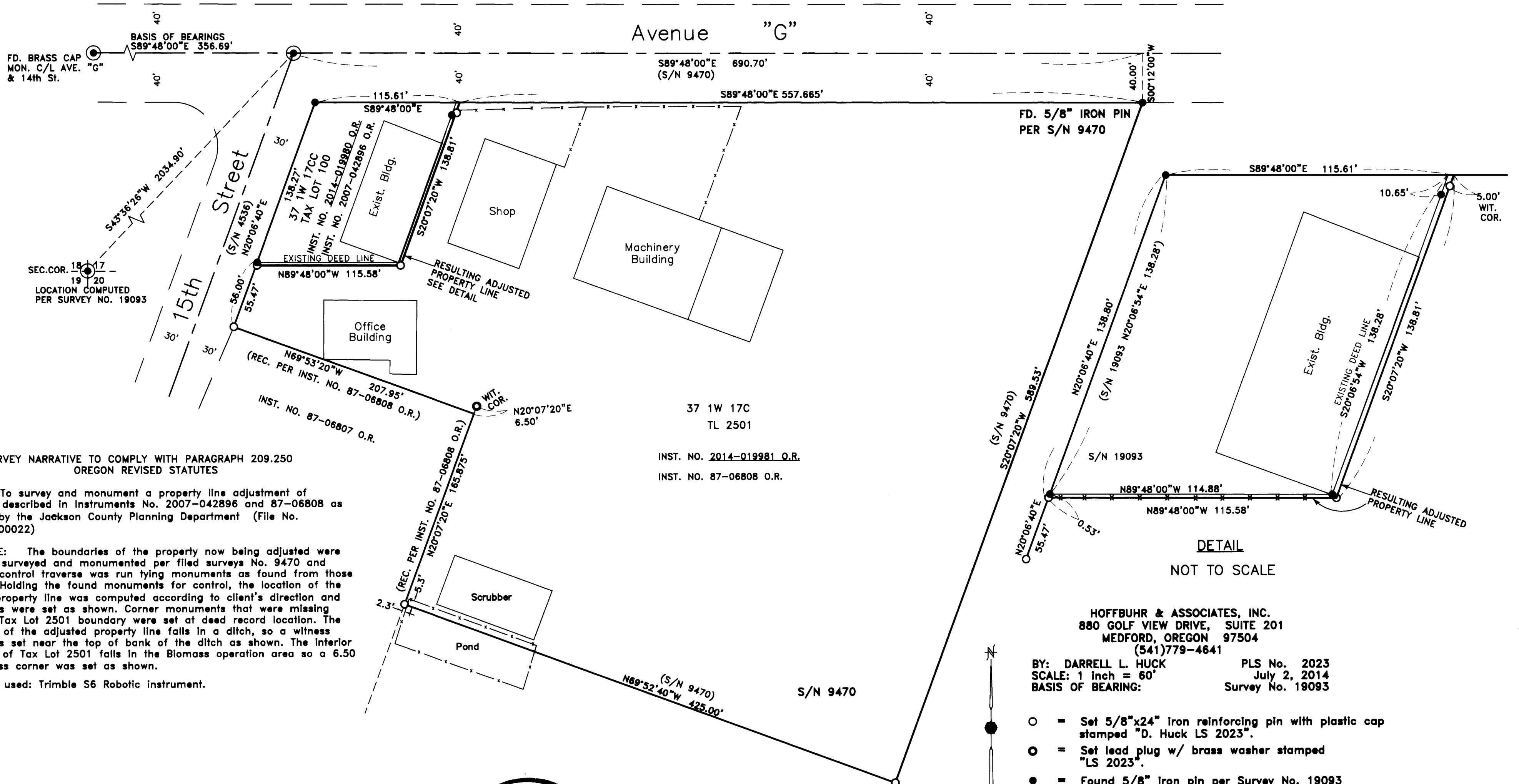
EXAMINED AND APPROVED BY JACKSON COUNTY DEVELOPMENT SERVICES  
THIS 7<sup>th</sup> DAY OF August, 2014

*[Signature]*  
PLANNER

# MAP OF SURVEY (Property Line Adjustment)

Located in:  
the SW 1/4 of Section 17,  
Township 36 South, Range 1 West, W.M.,  
Jackson County, Oregon

FOR  
STRAHL LOVING TRUST  
748 Eastridge Terrace  
Medford, Oregon 97504



### SURVEY NARRATIVE TO COMPLY WITH PARAGRAPH 209.250 OREGON REVISED STATUTES

PURPOSE: To survey and monument a property line adjustment of properties described in Instruments No. 2007-042896 and 87-06808 as approved by the Jackson County Planning Department (File No. SUB2014-00022)

PROCEDURE: The boundaries of the property now being adjusted were previously surveyed and monumented per filed surveys No. 9470 and 19093. A control traverse was run tying monuments as found from those surveys. Holding the found monuments for control, the location of the adjusted property line was computed according to client's direction and monuments were set as shown. Corner monuments that were missing from the Tax Lot 2501 boundary were set at deed record location. The north end of the adjusted property line falls in a ditch, so a witness corner was set near the top of bank of the ditch as shown. The interior all corner of Tax Lot 2501 falls in the Biomass operation area so a 6.50 foot witness corner was set as shown.

Equipment used: Trimble S6 Robotic instrument.

37 1W 17C  
TL 2501  
INST. NO. 2014-019981 O.R.  
INST. NO. 87-06808 O.R.

DETAIL  
NOT TO SCALE

HOFFBUHR & ASSOCIATES, INC.  
880 GOLF VIEW DRIVE, SUITE 201  
MEDFORD, OREGON 97504  
(541)779-4641

BY: DARRELL L. HUCK PLS No. 2023  
SCALE: 1 inch = 60' July 2, 2014  
BASIS OF BEARING: Survey No. 19093

- = Set 5/8"x24" iron reinforcing pin with plastic cap stamped "D. Huck LS 2023".
- = Set lead plug w/ brass washer stamped "LS 2023".
- = Found 5/8" Iron pin per Survey No. 19093 unless noted otherwise
- ⊙ = Found brass cap center line monument unless noted otherwise
- S/N = Survey Number
- O.R. = Official Records, Jackson County, Oregon
- WIT. COR. = Witness Corner

**FILED**  
Date 8-7-14 By dm  
This Survey Consists Of:  
1 sheet(s) Map  
0 page(s) Narrative  
JACKSON COUNTY  
SURVEYOR

REGISTERED  
PROFESSIONAL  
LAND SURVEYOR

*Darrell L. Huck*  
OREGON  
FEBRUARY 4, 1983  
DARRELL L. HUCK  
2023

Expires 6/30/2015  
(13098 mos pla.dwg)