

Map of Survey

Dependent Re-Survey of Lot 5 of the Davis Subdivision

Located in Lot 2 Block 5 of Galloway's Addition to Medford, Oregon

T37S R2W, W.M. SE 1/4 of Section 25

Jackson County, Oregon

Survey For:

Jackson County
Facilities Maint. and
10 S. Oakdale Ave
Medford, OR 97501

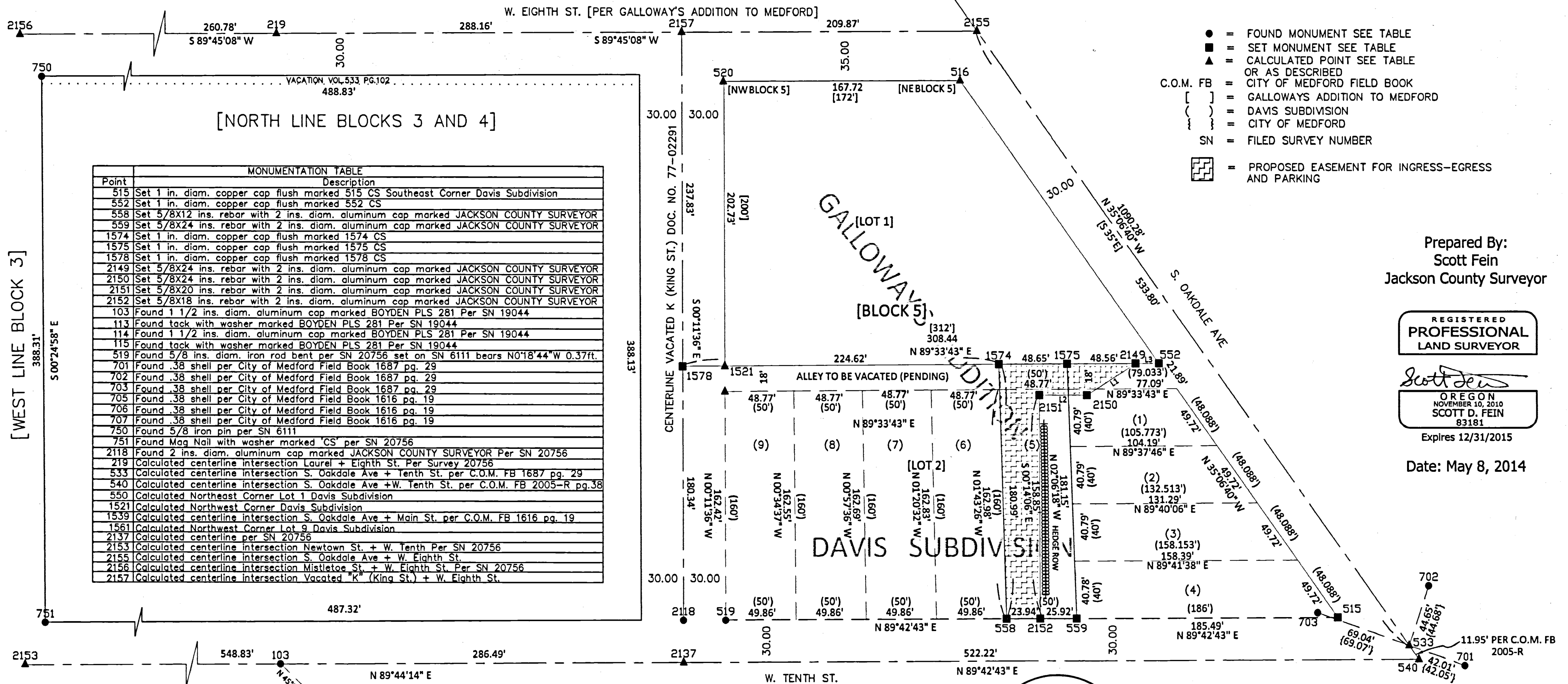
City of Medford
411 W. Eighth St.
Medford, OR 97501

LINE	BEARING	DISTANCE
L1	S 56°52'52" W	41.30'
L2	S 89°48'21" W	33.88'
L3	N 89°33'42" E	16.61'

SCALE: 1" = 50'

LEGEND

- = FOUND MONUMENT SEE TABLE
- = SET MONUMENT SEE TABLE
- ▲ = CALCULATED POINT SEE TABLE OR AS DESCRIBED
- C.O.M. FB = CITY OF MEDFORD FIELD BOOK
- [] = GALLOWAY'S ADDITION TO MEDFORD
- { } = DAVIS SUBDIVISION
- { } = CITY OF MEDFORD
- SN = FILED SURVEY NUMBER
- [] = PROPOSED EASEMENT FOR INGRESS-EGRESS AND PARKING



Point	Description
515	Set 1 in. diam. copper cap flush marked 515 CS Southeast Corner Davis Subdivision
552	Set 1 in. diam. copper cap flush marked 552 CS
558	Set 5/8x12 ins. rebar with 2 ins. diam. aluminum cap marked JACKSON COUNTY SURVEYOR
559	Set 5/8x24 ins. rebar with 2 ins. diam. aluminum cap marked JACKSON COUNTY SURVEYOR
1574	Set 1 in. diam. copper cap flush marked 1574 CS
1575	Set 1 in. diam. copper cap flush marked 1575 CS
1578	Set 1 in. diam. copper cap flush marked 1578 CS
2149	Set 5/8x24 ins. rebar with 2 ins. diam. aluminum cap marked JACKSON COUNTY SURVEYOR
2150	Set 5/8x24 ins. rebar with 2 ins. diam. aluminum cap marked JACKSON COUNTY SURVEYOR
2151	Set 5/8x20 ins. rebar with 2 ins. diam. aluminum cap marked JACKSON COUNTY SURVEYOR
2152	Set 5/8x18 ins. rebar with 2 ins. diam. aluminum cap marked JACKSON COUNTY SURVEYOR
103	Found 1 1/2 ins. diam. aluminum cap marked BOYDEN PLS 281 Per SN 19044
113	Found tack with washer marked BOYDEN PLS 281 Per SN 19044
114	Found 1 1/2 ins. diam. aluminum cap marked BOYDEN PLS 281 Per SN 19044
115	Found tack with washer marked BOYDEN PLS 281 Per SN 19044
519	Found 5/8 ins. diam. iron rod bent per SN 20756 set on SN 6111 bears N0°18'44"W 0.37ft.
701	Found .38 shell per City of Medford Field Book 1687 pg. 29
702	Found .38 shell per City of Medford Field Book 1687 pg. 29
703	Found .38 shell per City of Medford Field Book 1687 pg. 29
705	Found .38 shell per City of Medford Field Book 1616 pg. 19
706	Found .38 shell per City of Medford Field Book 1616 pg. 19
707	Found .38 shell per City of Medford Field Book 1616 pg. 19
750	Found 5/8 iron pin per SN 6111
751	Found Mag Nail with washer marked 'CS' per SN 20756
2118	Found 2 ins. diam. aluminum cap marked JACKSON COUNTY SURVEYOR Per SN 20756
219	Calculated centerline intersection Laurel + Eighth St. Per Survey 20756
533	Calculated centerline intersection S. Oakdale Ave + Tenth St. per C.O.M. FB 1687 pg. 29
540	Calculated centerline intersection S. Oakdale Ave + W. Tenth St. per C.O.M. FB 2005-R pg.38
550	Calculated Northeast Corner Lot 1 Davis Subdivision
1521	Calculated Northwest Corner Davis Subdivision
1539	Calculated centerline intersection S. Oakdale Ave + Main St. per C.O.M. FB 1616 pg. 19
1561	Calculated Northwest Corner Lot 9 Davis Subdivision
2137	Calculated centerline per SN 20756
2153	Calculated centerline intersection Newtown St. + W. Tenth Per SN 20756
2155	Calculated centerline intersection S. Oakdale Ave + W. Eighth St.
2156	Calculated centerline intersection Mistletoe St. + W. Eighth St. Per SN 20756
2157	Calculated centerline intersection Vacated 'K' (King St.) + W. Eighth St.

Prepared By:
Scott Fein
Jackson County Surveyor

REGISTERED
PROFESSIONAL
LAND SURVEYOR

Scott Fein
OREGON
NOVEMBER 10, 2010
SCOTT D. FEIN
83181

Expires 12/31/2015

Date: May 8, 2014

FILED
Date 5-12-14 By *dm*
This survey consists of:
1 sheet(s) Map
3 page(s) Narrative
JACKSON COUNTY
SURVEYOR

Jackson County Surveyor
Scott Fein, PLS, CWRE, CFEDS (541) 774-6191 10 S. Oakdale Ave. Rm.318 Medford, OR 97501

Computations and fieldwork performed between: 2/18/14 and 5/01/14	Reviewed By: Steve Beecher 5/05/14 Scott Fein 5/05/14
Office Staff: Scott Fein	CS Job File: 14-05 Davis Subdivision
Drawn By: SMB 5/01/14	14-05FinalMap.dwg

of the alley is coincident with the North line of Lots 1, 5, 6, 7, 8, and 9 of the Davis Subdivision. The northwest corner of Lot 9 (pt. 1561) was determined by intersection of the South line of the 18 foot alley and the East right of way line of vacated "K" (King) St. and the northeast corner of Lot 1 (pt. 550) was determined from the intersection of the South line of the 18 foot alley and the westerly right of way line of "J" (S. Oakdale Ave.) St. The distances for the North lines of Lots 1, 5, 6, 7, 8 and 9 of the Davis Subdivision were single proportioned against this distance (pt. 1561 to pt.550). The South lines of Lots 5, 6, 7, 8 and 9 of the Davis Subdivision were single proportioned against the distance from the southwest corner of the Davis Subdivision as determined from filed survey 20756 at point 519 and the southeast corner of the Davis Subdivision as determined by the offset intersection of the centerlines of "J" (S. Oakdale Ave.) St. and West Tenth St. (pt. 515). The southwest (pt. 558) and southeast (pt. 559) corners of Lot 5 were monumented on this line and the northwest (pt. 1574) and northeast (pt. 1575) corners of Lot 5 were monumented at the intersection of the East and West lines of Lot 5 with the North line of the 18 foot alley to reflect the additional pending vacated area. The accompanying map shows all proportionate dimensions of the lots in the Davis Subdivision for documentation and computational purposes.

REGISTERED
PROFESSIONAL
LAND SURVEYOR

Scott D. Fein

OREGON
NOVEMBER 10, 2010
SCOTT D. FEIN
83181

RENEWAL: 12/31/2015

FILED
Date 5-12-14 By lm
This Survey Consists Of:
1 sheet(s) Map
3 page(s) Narrative
JACKSON COUNTY
SURVEYOR

field data was transferred to Carlson Survey Version 2014 for coordinate geometry computations and drafting.

PROCEDURE: (Note references to (pt.#) or point# appear on the accompanying map)

This survey is a dependent re-survey of Lot 2 of Block 5 of the Galloway's Addition to Medford, Oregon (filed November 16, 1887) and the Davis Subdivision of Lot 2 in Block 5 of Galloway's Addition (filed February 24, 1894). Block 5 of Galloway's Addition was established from the platted right of way of West Eighth St., West Tenth St., "K" (King) St. and "J" St. (S. Oakdale Ave.).

Filed survey 20756 performed by the Jackson County Surveyor's Office in 2010 is a dependent re-survey of Blocks 3 and 4 of Galloway's Addition. This survey established the location of "M" (Mistletoe) St., "K" (King) St., West Eighth St. and West Tenth St. From the centerline intersections of the aforementioned streets the boundaries of Block 3 and 4 were established. These centerlines and Block boundaries have been accepted for control. The centerline of "J" St. (S. Oakdale Ave.) was determined from found references (pts. 705,706,707) set by the City of Medford at the intersection of Main St. and S. Oakdale Ave. and using a best fit of the distances recorded on Pg. 19 of City of Medford Field Book 1616 (pt.1539) through the centerline intersection of S. Oakdale Ave. and Tenth St. easterly as determined by a best fit from found references (pts.701,702,703) set by the City of Medford and distances recorded on Pg. 29 of City of Medford Field Book 1687 (pt. 533) then extended 11.95 ft.(pt. 540), see City of Medford Field Book 2005-R, Pg. 38, to the intersection with W. Tenth St.

The boundaries of Block 5 of Galloway's Addition were determined by offset intersections as follows;

Easterly boundary by offsetting 30 ft. from the centerline of "J" St.(S. Oakdale Ave.) between its intersection with West Tenth St. to the South (pt. 540) and its intersection with West Eighth St. to the North (pt. 2155)

Westerly boundary by offsetting 30 ft. from the centerline of vacated "K"(King) St. as determined from the centerline point on the North right of way line of West Tenth St. (pt. 2118) to the intersection of West Eighth St. and vacated "K"(King) St. (pt. 2157).

North boundary by offsetting 35 ft. from the centerline of West Eighth St. between the intersection of West Eighth St. and vacated "K"(King) St. (pt. 2157) and the intersection of West Eighth St. with "J" St.(S. Oakdale Ave.) (pt. 2155).

South boundary by offsetting 30 ft. from the centerline of West Tenth St. between the centerline point of West Tenth St. only (pt. 2137) and the intersection of West Tenth and "J"(S. Oakdale Ave.) (pt. 540).

After resolving drafting errors, omissions and mathematical errors on the original plats, Lots 1 and 2 of Block 5 of the Galloway's Addition were configured by single proportioning along the East and West block boundaries. The exterior of Lot 2 (pts. 515,519,552, and 1521) was then held as the bounds of the Davis Subdivision. The intersection of vacated "K" (King) St. with the westerly extension of the North line of the Davis Subdivision is monumented as point 1578. The 18 ft. wide alley located in the Davis Subdivision was created by holding the South line of said alley parallel to the North line of the subdivision and offset 18 ft. southerly. The South line

**SURVEY NARRATIVE
IN ACCORDANCE WITH ORS 209.250**

SURVEY FOR:

Jackson County Facilities Maintenance
10 S. Oakdale Ave.
Medford, OR 97501

And

City of Medford
411 W. Eighth St.
Medford, OR 97501

SURVEY BY:

Jackson County Surveyor
Scott Fein, *PLS, CWRE, CFEDS*
10 S. Oakdale Ave., Rm. 318
Medford, OR 97501
541-774-6191
surveyor@jacksoncounty.org

LOCATION:

Southeast Quarter of Section 25, Township 37 South Range 2 West, W.M.: Lot 2 Block 5 of Galloway's Addition to Medford, Oregon: Lot 5 of the Davis Subdivision.

DATE OF SURVEY:

Field work performed between 1/28/14 and 3/5/14. Computations and drafting were completed between 2/25/14 and 3/13/14.

PURPOSE:

To determine the location of Lot 5 of the Davis Subdivision as filed for recording on February 24, 1894. Monument the boundaries of said Lot 5 and establish monumented survey control on the exterior boundary of the Davis Subdivision. Locate the 18 foot wide alley per the Davis Subdivision and prepare a legal description to vacate said alley. Prepare a legal description for an ingress, egress, and parking easement, and monument the boundaries of the easement. Locate the right of way of South Oakdale Ave. and West Tenth St. to prepare a legal description for the City of Medford for right of way dedication purposes.

BASIS OF BEARING:

Filed Survey 20756 as shown on accompanying map.

SURVEY METHOD:

Utilizing a Trimble 5600 Robotic Theodolite and a Trimble TSC2 data collector running Trimble Survey Controller Software Version 12.42, survey control was established by terrestrial survey methods. All field data was processed through Trimble Business Center Version 2.81. Reduced