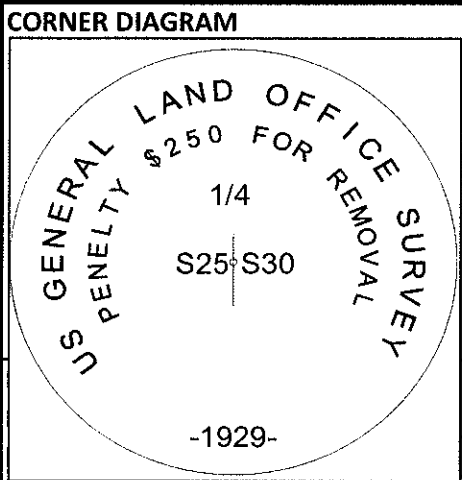


Index **CORNER RECORD (SEARCH)**
 File No. T-1 PROJ. NO. BYBEE CORNER 1/4
 TOWNS. 30 S RANGE 5E/4E R.D. HIGH CAS. COUNTY JACKSON/KLAMATH GCDB# 100240
 MERID. W.M. FOREST RRS STATE OREGON



DESCRIBE CORNER MONUMENT FOUND
 FOUND 2-1/2" GLO BRASS CAP ON 1-1/4" IRON PIPE, PROJECTING 5" ABOVE THE GROUND, MARKED AS SHOWN.
 WOOD FENCEPOST 1FT NORTHWEST

DESCRIBE BEARING TREES OR OTHER OFFICIAL ACCESSORIES FOUND

DIA	TYPE	BEARS	DIST	FACE/MARKINGS
24"	FIR SNAG	S 1-3/4 W	28.9 FT	HEALED SINGLE BLAZE
23"	FIR SNAG	S 29-1/2 W	17.4 FT	HEALED DOUBLE BLAZE
11"	FIR	N 89-1/2 E	7.5 FT	HEALED DOUBLE BLAZE

Obj. Ident. _____
 Ident. By _____

Signature _____
PLANE COORDINATE POSTION DATA
 State _____ Zone _____
 North _____
 West _____
 Estab. By _____

DESCRIBE CORNER LOCATION RELATIVE TO NEAR-BY FEATURES, ALSO HOW TO REACH CORNER
 TAKE THE 6260 ROAD TO THE END, FOLLOW OLD ROAD TO POSTED/BLAZED BOUNDARY LINE WHERE FENCE CROSSES, THENCE NORTH 120 FT +/- TO CORNER
 CORNER FALLS ON A FLAT SOUTH OF FENCELINE.

Signature	Title	Division	Headquarters
JONATHAN DREW	LSIT	LANDS	SPRINGFIELD SO

CORNER RECORD (PERPETUATION)

REGISTERED PROFESSIONAL LAND SURVEYOR

John Ransom

OREGON
 JULY 21, 1992
 JOHN C. RANSOM
 2561

MONUMENT : DESCRIBE NEW MONUMENT SET, OR WORK DONE TO PRESERVE EXISTING MONUMENT

MONUMENT FOUND IN GOOD CONDITION, FLAGGING ON CORNER AND GUARD POSTS

ACCESSORIES : DESCRIBE NEW BT'S WITNESS OBJECTS ETC. ESTABLISHED, OR WORK DONE TO PRESERVE EXISTING EVIDENCE

MARKED A 25" FIR BEARS, S 22 E - 36.8 FT, MARKED "1/4 S30" "BT", ON A DOUBLE BLAZE
 MARKED A 24" FIR BEARS N 31-1/4 W - 17.1 FT, MARKED "1/4 S25" "BT" ON A DOUBLE BLAZE
 MARKED A 12" FIR BEARS, S 76 W - 58.2 FT, MARKED "X" "BT" ON A DOUBLE BLAZE
 PAINTED BT FACES AND 6" BAND AT HEAD HEIGHT, NEW NAILS ON TAGS AND NEW TAGS WHERE NEEDED (BT AND ATTENTION)

DONE BY: JONATHAN DREW TITLE LSIT DATE FY 2012 PLS NO./AGENCY/STATE J.RANSOM PLS 2561
 Certified Cor. Record Prepared? YES Filed At: KLAMATH/JACKSON DATE _____

REMARKS

MAINTAINED LINE 1 MILE SOUTH AND .5 MILES NORTH OF CORNER TO STANDARD MEASURMENTS TAKEN WITH STAFF COMPASS, 15-3/4° E DECLINATION, AND STEEL TAPE, BEARINGS TO CENTER, DISTANCE TO ALUMINUM NAIL SET AT SIDE CENTER. NEW BT'S INCLUDE 3/4" BRASS WASHER MARKED "LS2561" NAILED FLUSH IN LOWER BLAZE BETWEEN "B" AND "T"