

21422

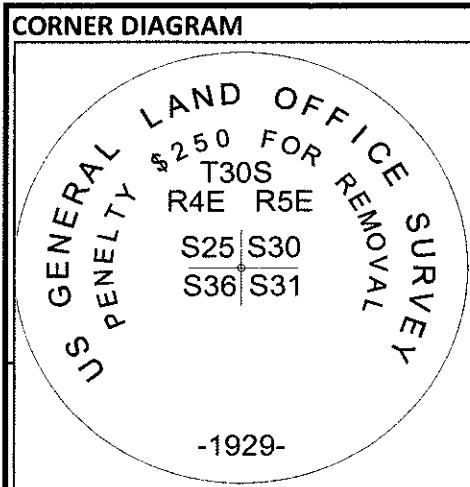
USDA-FOREST SERVICE

Index **CORNER RECORD (SEARCH)**

File No. V-1 PROJ. NO. BYBEE CORNER SECTION

TOWNS. 30 S RANGE 5E/4E R.D. HIGH CAS. COUNTY JACKSON/KLAMATH GCDB# 100200

MERID. W.M. FOREST RRS STATE OREGON



DESCRIBE CORNER MONUMENT FOUND

FOUND 2-1/2" GLO BRASS CAP ON 2" IRON PIPE, PROJECTING 1" ABOVE THE GROUND, MARKED AS SHOWN.

DESCRIBE BEARING TREES OR OTHER OFFICIAL ACCESSORIES FOUND

DIA	TYPE	BEARS	DIST	FACE/MARKINGS
21"	FIR	N 71-1/4 E	18.7 FT	HEALED SINGLE BLAZE
30"	FIR	S 24-1/2 E	18.4 FT	HEALED SINGLE BLAZE
29"	FIR SNAG	S 20 W	18.8 FT	HEALED SINGLE BLAZE
24"	FIR SNAG	N 63-1/4 W	39.2 FT	HEALED SINGLE BLAZE

Obj. Ident. _____
 Ident. By _____
 Signature _____

DESCRIBE CORNER LOCATION RELATIVE TO NEAR-BY FEATURES, ALSO HOW TO REACH CORNER

TAKE THE 6260 ROAD TO THE END, FOLLOW OLD ROAD TO POSTED/BLAZED BOUNDARY LINE WHERE FENCE CROSSES, THENCE SOUTH .5 MILES +/- TO CORNER

PLANE COORDINATE POSITION DATA

State _____ Zone _____
 North _____
 West _____
 Estab. By _____

Signature JONATHAN DREW Title LSIT Division LANDS Headquarters SPRINGFIELD SO

CORNER RECORD (PERPETUATION)

REGISTERED PROFESSIONAL LAND SURVEYOR

John Ransom

OREGON
 JULY 21, 1992
 JOHN C. RANSOM
 2561

MONUMENT : DESCRIBE NEW MONUMENT SET, OR WORK DONE TO PRESERVE EXISTING MONUMENT

MONUMENT FOUND IN GOOD CONDITION, FLAGGING ON CORNER AND GUARD POSTS

ACCESSORIES : DESCRIBE NEW BT'S WITNESS OBJECTS ETC. ESTABLISHED, OR WORK DONE TO PRESERVE EXISTING EVIDENCE

MARKED A 14" FIR BEARS, S 71 W - 32.7 FT, MARKED "X" "BT", ON A DOUBLE BLAZE

MARKED A 40" FIR BEARS N 32-1/2 W - 49.0 FT, MARKED "T30S R4E S25" "BT" ON A DOUBLE BLAZE

PAINTED BT FACES AND 6" BAND AT HEAD HEIGHT, NEW NAILS ON TAGS AND NEW TAGS WHERE NEEDED (BT AND ATTENTION)

DONE BY: JONATHAN DREW TITLE LSIT DATE FY 2012 PLS NO./AGENCY/STATE J.RANSOM PLS 2561

Certified Cor. Record Prepared? YES Filed At: KLAMATH/JACKSON DATE _____

REMARKS

MAINTAINED LINE 1 MILE NORTH AND .5 MILES SOUTH OF CORNER TO STANDARD MEASUREMENTS TAKEN WITH STAFF COMPASS, 15-3/4° E DECLINATION, AND STEEL TAPE, BEARINGS TO CENTER, DISTANCE TO ALUMINUM NAIL SET AT SIDE CENTER. NEW BT'S INCLUDE 3/4" BRASS WASHER MARKED "LS2561" NAILED FLUSH IN LOWER BLAZE BETWEEN "B" AND "T"