

**MAP OF SURVEY
FOR
HORIZONTAL CONTROL
AND
MONUMENT RECOVERY
LOCATED IN
N.W. 1/4 SECTION 30 & N.E. 1/4 SECTION 25,
T37S, R1W & R2W, W.M.
CITY OF MEDFORD
JACKSON COUNTY, OREGON
OCTOBER 2013**

FOR: City of Medford Engineering Department
Lausmann Annex
200 South Ivy Street
Medford, OR. 97501

BY: Hardey Engineering and Associates, Inc.
Richard L. Bath, LS 1069
Director of Surveying
P.O. Box 1625
Medford, OR. 97501

LEGEND

- △ HARDEY ENGINEERING & ASSOC. CONTROL POINT - (SEE TABLE FOR DESCRIPTION AND COORDINATE VALUES)
- ⊗ CENTERLINE INTERSECTION POINT DETERMINED BY RP'S AS NOTED
- .38 CALIBER SHELL CASING FLUSH IN CONCRETE
- ⊕ FOUND IRON PIN (SEE TABLE FOR DESCRIPTION AND COORDINATE VALUES)
- SFNF SEARCH FOR NOT FOUND
- CS COUNTY SURVEY NO. FILED WITH THE JACKSON COUNTY SURVEYORS OFFICE
- C.O.M. FB CITY OF MEDFORD FIELD BOOK NOTES
- T.L. TAX LOT

NARRATIVE:

PURPOSE: To survey and locate all survey monuments of record in the subject area shown on this map of survey. In addition to monument recovery data it is the purpose of this survey to provide the mathematical survey data for the two proposed Dedication Deeds shown hereon.

PROCEDURE: A traverse was extended from CP 1063 (as shown on CS 20921) at the intersection of Fourth and Central southwesterly to Front Street and northwesterly to Third Street. The only filed survey in the subject area was CS 679 from which a 5/8 inch pin was found at the most southern corner as shown. City of Medford reference points (RPs) were located and tied into the survey control network to produce the monumented locations of Fourth Street and Central Avenue. The deed record locations of all new right of way lines, preserved locations of found survey monuments and RPs, and set control points are plainly set forth hereon.

COORDINATE SYSTEM: Assumed relative to coordinates shown on CS 20921

BASIS OF BEARING: Previous control established for CS 20921 by this office

△ - CONTROL POINTS

POINT	NORTHING	EASTING	ELEVATION	DESCRIPTION
CP996	6433.261	10181.344	1364.89'	MAG NAIL
CP1063	6273.976	9953.453	1368.69'	RP SHELL CASING
4002 (CP26)	6096.718	9732.766	1373.34'	PK NAIL
4009 (CP21)	6613.244	9709.229	1369.34'	RP SHELL CASING
CP4011	6325.735	10031.005	1367.57'	MAG NAIL

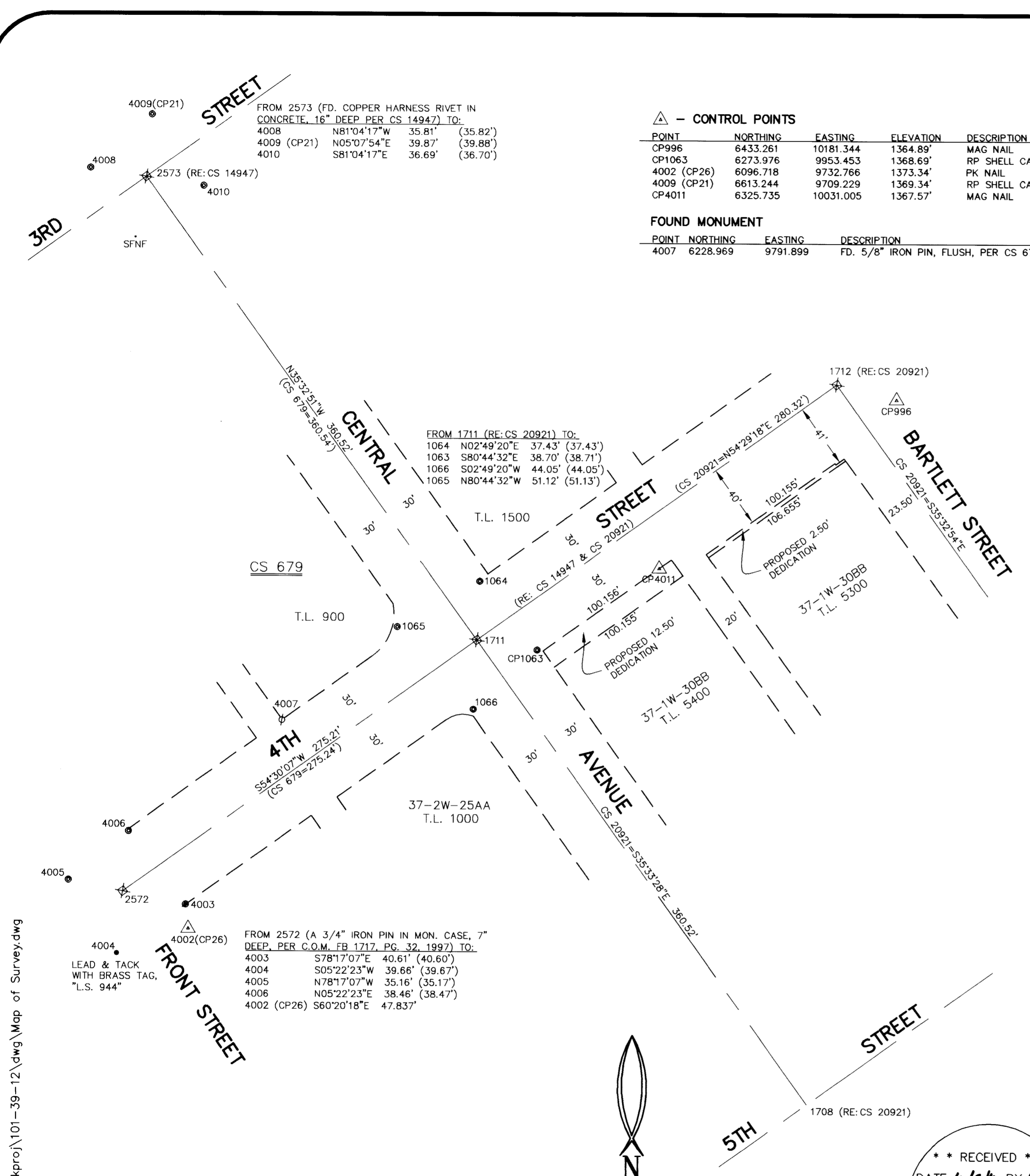
FOUND MONUMENT

POINT	NORTHING	EASTING	DESCRIPTION
4007	6228.969	9791.899	FD. 5/8" IRON PIN, FLUSH, PER CS 679

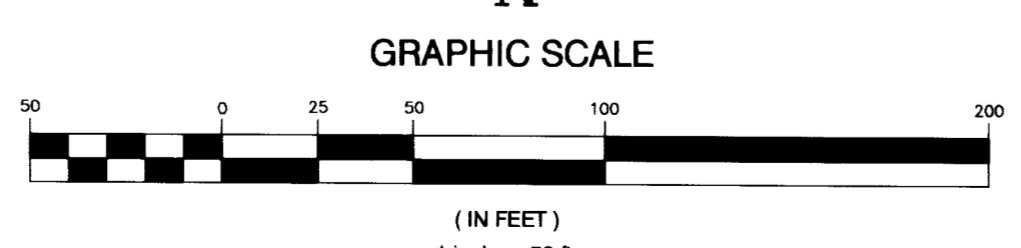
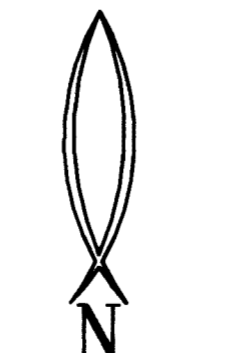
FROM 2573 (FD. COPPER HARNESS RIVET IN CONCRETE, 16" DEEP PER CS 14947) TO:
 4008 N81°04'17"W 35.81' (35.82')
 4009 (CP21) N05°07'54"E 39.87' (39.88')
 4010 S81°04'17"E 36.69' (36.70')

FROM 1711 (RE: CS 20921) TO:
 1064 N02°49'20"E 37.43' (37.43')
 1063 S80°44'32"E 38.70' (38.71')
 1066 S02°49'20"W 44.05' (44.05')
 1065 N80°44'32"W 51.12' (51.13')

FROM 2572 (A 3/4" IRON PIN IN MON. CASE, 7" DEEP, PER C.O.M. FB 1717, PG. 32, 1997) TO:
 4003 S78°17'07"E 40.61' (40.60')
 4004 S05°22'23"W 39.66' (39.67')
 4005 N78°17'07"W 35.16' (35.17')
 4006 N05°22'23"E 38.46' (38.47')
 4002 (CP26) S60°20'18"E 47.837'



P:\skskpro\101-39-12\dwg\Map of Survey.dwg



* * RECEIVED * *
 DATE 10/13 BY RLB
 This survey consists of:
1 sheet(s) Map
0 page(s) Narrative
 JACKSON COUNTY
 SURVEYOR

REGISTERED
 PROFESSIONAL
 LAND SURVEYOR
Richard L. Bath
 OREGON
 JULY 30, 1976
 RICHARD L. BATH
 No. 1069
 RENEWS 12/31/13

Hardey Engineering & Associates, Inc.

HEA
 ENGINEERING INTEGRITY

P.O. BOX 1625
 MEDFORD, OREGON 97501-0063
 VOICE: 541-772-6880
 FAX: 541-772-9573
 EMAIL: info@hea-inc.com

37-1W-30BB, T.L.'s 1500, 5300 & 5400
 37-2W-25AA, T.L.'s 900 & 1000