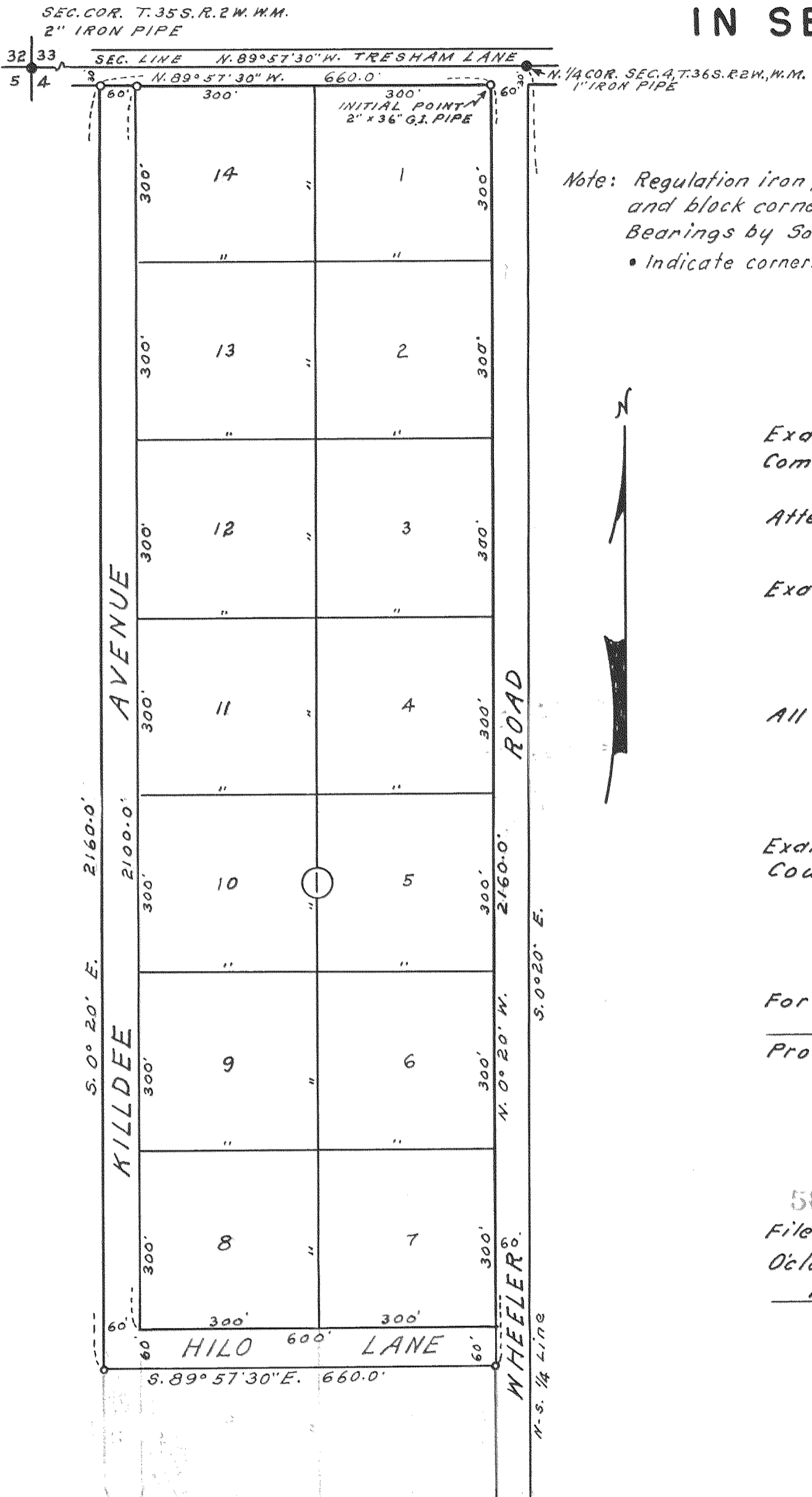


SOUTH FORTY SUBDIVISION

IN SECTION 4, T. 36 S., R. 2 W., W.M., JACKSON COUNTY, OREGON

SCALE: 1" = 200'



Note: Regulation iron pipes set at all lot and block corners.
Bearings by Solar Observation
• Indicate corners found

Examined and approved by the Jackson County Planning Commission in regular session this 13th day of February 1963

Attest: Gerald Rathan Secretary
C. S. Sneyd President

Examined and approved this 15th day of January 1963

Ihad W. Hatten
County Assessor

All taxes paid in full to date this the 15th day of Jan 1963

De L. Reid
County Sheriff

Examined and recommended for approval by the County Court this the 4th day of MARCH 1963

Mark E. Snyder
County Surveyor

For Order of the County Court approving this plat see Volume Page of County Commissioner's Journal of Proceedings.

Emm Velle
County Clerk

By
Deputy

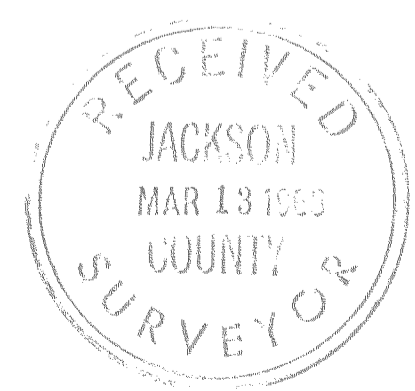
56250-1
Filed for record this the 8th day of March 1963 at 2:21 O'clock P. M., and recorded in Volume 9 of Plats at Page 19 of Records of Jackson County.

Emm Velle
County Clerk

By
Deputy

I hereby certify that this tracing is an exact copy of the original plat filed with the County Clerk

L. E. Ager
Surveyor



S. 1/4 COR. SEC. 4, T. 36 S., R. 2 W., W.M.
3/4" IRON PIPE BRASS CAP

DEDICATION

KNOW ALL MEN BY THESE PRESENTS that we, Charles W. Duggan and Rosellen Duggan are the owners in fee simple of the lands hereon described, and that we have subdivided the same into lots, blocks and streets as shown hereon, and the number and size of the lots and the length of all lines are plainly set forth, and that this plat is a correct representation of the said subdivision and we do hereby dedicate to the public for public use all streets as shown hereon, and we do hereby designate said subdivision as SOUTH FORTY SUBDIVISION.

IN WITNESS WHEREOF we have set our hands and seals this 14th day of January 1963

Charles W. Duggan
Rosellen Duggan

STATE OF OREGON }
County of Jackson } ss

January 14, AD. 1963

Personally appeared the above named Charles W. Duggan and Rosellen Duggan and acknowledged the foregoing instrument to be their voluntary act and deed. Before me

Shelma C. McIntyre
Notary Public for Oregon
My Commission expires the 1st day of August 1965

SURVEYOR'S CERTIFICATE

STATE OF OREGON }
County of Jackson } ss

I, L.E. Ager, a duly registered Surveyor of the State of Oregon, being first duly sworn, do hereby certify that I have correctly surveyed and marked with the proper monuments as provided by law the tract of land hereon shown and the said plat is a correct representation of the same and the following is an accurate description of the boundary lines: Beginning at a point which bears S. 0° 20' E., 30 feet and N. 89° 57' 30" W., 60.0 feet from the Quarter Section corner on the North line of Section 4, Township 36 South, Range 2 West of the Willamette Meridian, Jackson County, Oregon; thence N. 89° 57' 30" W., parallel with the North line of said Section, 660.0 feet; thence S. 0° 20' E., 2160.0 feet; thence S. 89° 57' 30" E., 660.0 feet to the West line of the Wheeler Road; thence N. 0° 20' W., parallel with the East line of the West half of said Section, 2160.0 feet to the point of beginning.

L. E. Ager
Surveyor

Subscribed and sworn to before me this 11th day of January 1963

Suzanne A. Osborn
Notary Public for Oregon

My Commission expires the 5th day of January 1964

Survey narrative to comply with ORS 209.250

For: C. W. Duggan, 3152 Tresham Lane, Gold Hill, Oregon

Purpose: Subdivision of tract, (SOUTH FORTY SUBDIVISION)

Procedure: Began at N. $\frac{1}{4}$ corner of Sec. 4, a 1 inch iron pipe
19 inches below Tresham Road surface.

Found $\frac{3}{4}$ inch iron pipe with brass cap, cap stamped
 $\frac{4}{9}$ for $\frac{1}{4}$ corner on South line of Section 4 and from

this corner I set a target 30 feet West which was
visible from a nail set on the North line of Section
4, 30 feet Westerly of the N. $\frac{1}{4}$ corner thereof.

Solar shot taken on this 30 feet offset line for
true bearing of N.-S. $\frac{1}{4}$ line. As the NW corner of
of Section 4 was not visible from the N. $\frac{1}{4}$ corner I
set instrument at point where both these corners were
visible, wiggling in on true line between these points
and set nail on true line at a point visible from the
N. $\frac{1}{4}$ corner and from a set up on the 30 feet offset
line I determined the bearing of the section line.

The North and South lines of the subdivision are
parallel with the North line of the Section and the
East and West lines are parallel with the N-S $\frac{1}{4}$ line.
All that portion of the Wheeler Road deleted from
from the subdivision that has been previously conveyed
to Jackson County.

The P.P. & L right-of-way line determined from ties
from the subdivision boundary to nubs found marking
said R/W line.

All lot and block corners marked with regulation iron
pipes.

