

Purpose

The Purpose of this survey was to mark, post, and maintain National Forest System Lands Boundary lines in the Sloas special use permit area. The boundary lines were also brushed and blazed, as needed along the lines that were maintained, aluminum posts were added to meet standards. Corners were maintained where additional accessories were needed.

Narrative

This survey was performed with a Leica 1203+ Total Station. A closed loop was run to locate the bearing trees, improvements, and U.S. Dept. of Commerce Monuments. An existing Jackson County Monument was discovered at the section corner that had been disturbed. Replaced the county monument with standard Forest Service Monument flush with ground. The county monument was buried along side of the corner. Finally performed maintenance from the Section Corner west to the 1/4 corner of Sec. 4 and Sec. 33.

History

1884- GLO- Rufus S. Moore surveyed township lines and subdivision lines
 1961- BLM- Joseph S. Gawron remonumented corner
 1981- Forest Service performed a survey of section 34
 1997- Forest Service performed a special use survey
 2009 - Jackson County Surveyor performed a survey and remonumented the section corner.

Bearing Objects

BT1- 19" Cedar bears N 43°12' E, 65.00' with blaze and sign
 BT2 - 21" Cedar bears S 23°32' E, 112.90' with blaze and sign
 BT3 - 8" Cedar bears N 42°06' W, 67.27' with blaze and sign
 BC1 - Brass Cap in concrete bears N 64°35'33" W, 375.09'
 BC2 - Brass Cap in concrete bears N 51°41'35" W, 452.76'
 BO1 - Northeast corner of house bears S 37°19'23" W, 64.30'

PLOTTER: Xerox Phaser 7400
 INK: Black 108R00649
 MEDIA: Mylar
 TAX MAP & LOT INFO: NFSL LOTS
 16551400-0500 16551400-0600

**ROBERT SLOAS
 PROPERTY LINE MAINTENANCE
 RECORD OF SURVEY FOR THE
 ROGUE RIVER- SISKIYOU
 NATIONAL FOREST**

IN SECTION 33, THE SOUTH LINE OF THE SE 1/4 OF SECTION 33
 T.36 S., R.3 E., W.M.
 JACKSON COUNTY, OREGON
 OCTOBER 11, 2012

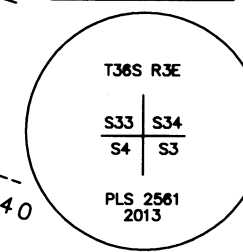
Basis of Bearing
 1997 survey performed
 by Forest Service

JACKSON COUNTY SURVEYORS OFFICE
 C.S. FILE NO. _____
 FILING DATE: 5-23-13

LEGEND:

- Found U.S. Dept. of Commerce Bureau of Public Roads (brass cap in concrete)
- Found County monument with cap missing remonumented with 2 3/4" pipe with brass cap
- ⊗ Bearing Tree
- NFSL National Forest System Lands
- Forest Service Boundary
- Forest Service Boundary maintained
- Unmarked Point at the beginning and end of special use right-of-way

MONUMENT SET

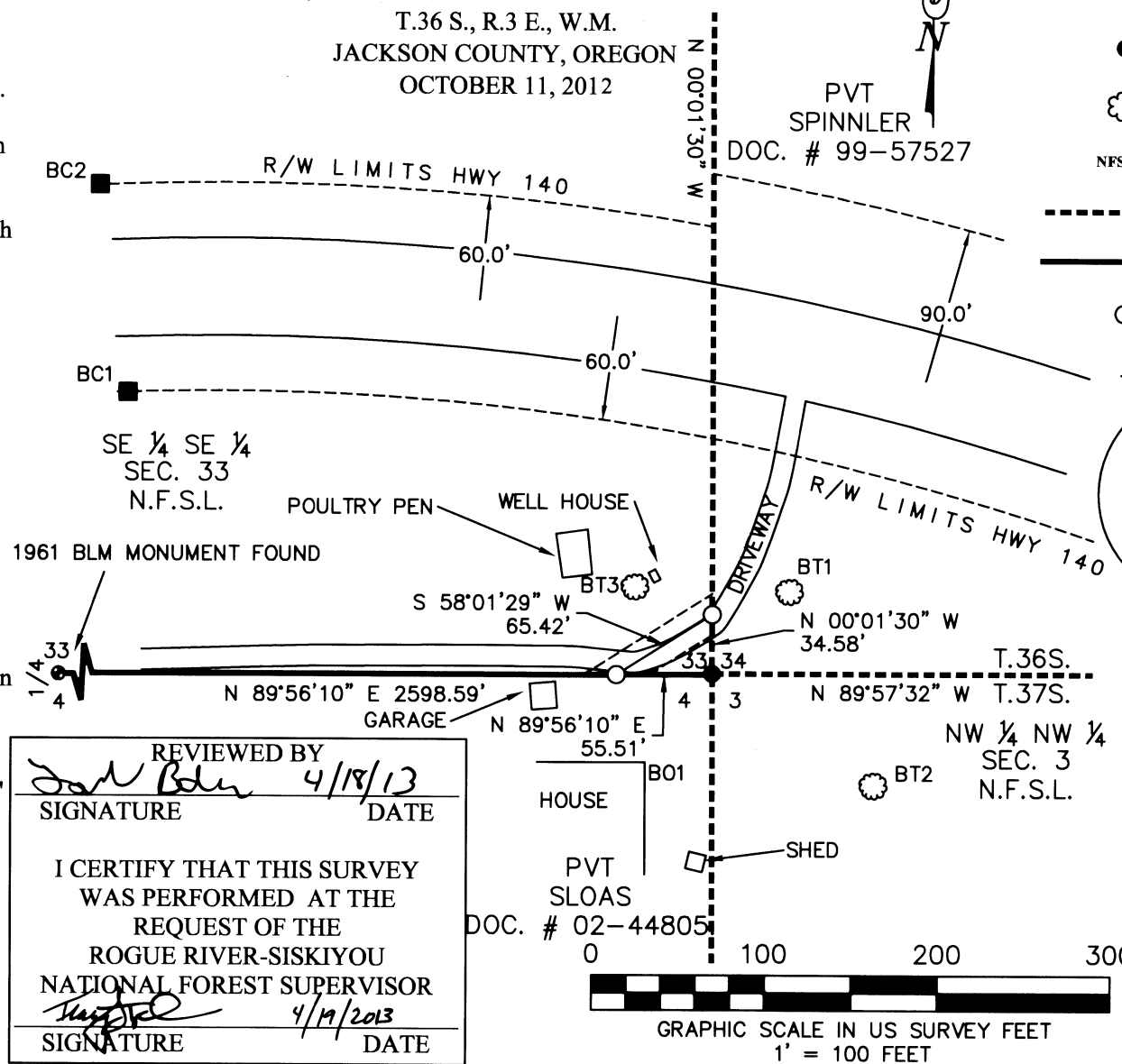


REGISTERED PROFESSIONAL LAND SURVEYOR
John Ransom
 OREGON
 JULY 21, 1992
 JOHN C. RANSOM
 2561

Expires: 12/31/2014

I, John C. Ransom, a Registered Land Surveyor in the State of Oregon, hereby certify that this plat and the notes hereon are a true and correct representation of a survey I performed in October 2012, at the request of the USDA Forest Service, in accordance with the statutes of the State of Oregon and the BLM Manual of Surveying Instructions, 2009.

John Ransom
 John C. Ransom, PLS
 Willamette National Forest
 3106 Pierce Parkway, Suite D
 Springfield, OR 97477



REVIEWED BY
Jan Blum 4/18/13
 SIGNATURE DATE
 I CERTIFY THAT THIS SURVEY WAS PERFORMED AT THE REQUEST OF THE ROGUE RIVER-SISKIYOU NATIONAL FOREST SUPERVISOR
[Signature] 4/19/2013
 SIGNATURE DATE

