

MAP OF SURVEY LOCATED IN THE NE 1/4 NW 1/4 OF SECTION 9, TOWNSHIP 39 SOUTH, RANGE 1 EAST, WILLAMETTE MERIDIAN, CITY OF ASHLAND, JACKSON COUNTY, OREGON

LINE TABLE

LINE	BEARING	DISTANCE	RECORD DATA FROM	BEARING	DISTANCE
L1	N 74°31'41" W	50.04 FT	RRA-TP	S 74°22'00" E	50.00 FT
L2	S 74°33'00" E	50.04 FT	RRA-TP	N 74°22'00" W	50.00 FT
L3	N 15°23'14" E	134.05 FT	RRA-TP	S 15°38'00" W	134.00 FT
L4	S 15°23'15" W	134.07 FT	RRA-TP	N 15°38'00" E	134.00 FT
L5	S 73°03'31" E	74.95 FT	CS 20753	N 72°36'54" W	74.98 FT
L6	S 73°03'48" E	124.96 FT	CS 20753	N 72°36'54" W	124.96 FT
L7	S 15°25'09" W	134.49 FT	CS 20753	N 15°48'51" E	134.47 FT
L8	N 74°38'5" W	60.10 FT	CS 20989	N 74°09'31" W	60.04 FT
L9	S 15°24'35" W	133.99 FT	CS 20989	N 15°49'46" E	133.98 FT
L10	S 74°27'40" E	90.05 FT			
L11	N 74°31'41" W	150.12 FT			

COORDINATE TABLE - (OCRS GRANTS PASS-ASHLAND ZONE) FROM DIRECT GPS TIES

Point	Northing	Easting	Elevation	Description
100	163618.936	333249.563	1894.38	C/L MONUMENT 3RD & B
102	164155.934	333013.410	1875.04	C/L MONUMENT 2ND & A
103	163549.693	332867.013	1901.37	MAG & BRASS WASHER
104	163490.870	333009.154	1903.97	MAG & BRASS WASHER
107	163515.733	332924.977	1902.90	MAG & BRASS WASHER
110	163165.990	333124.674	1914.22	C/L MONUMENT 3RD & C
111	163564.508	332814.207	1901.90	MAG & WASHER CS20753
120	163465.305	333170.956	1901.57	MAG & WASHER CS20989
121	163481.216	333113.004	1903.54	R&C CS20989
122	163730.559	332730.422	1896.37	MAG & WASHER CS20753
123	163752.398	332658.728	1896.41	MAG & WASHER CS20753

SURVEY NARRATIVE TO COMPLY WITH O.R.S. 209.250

PURPOSE OF SURVEY: TO LOCATE AND MONUMENT THE PROPERTY DESCRIBED IN DOCUMENT NO. 1990-018776 AS RECORDED IN THE JACKSON COUNTY CLERKS OFFICE. PROPERTY DESCRIPTION IS LOTS 7 AND 8 IN BLOCK M, RAILROAD ADDITION TO THE TOWN OF ASHLAND, OREGON.

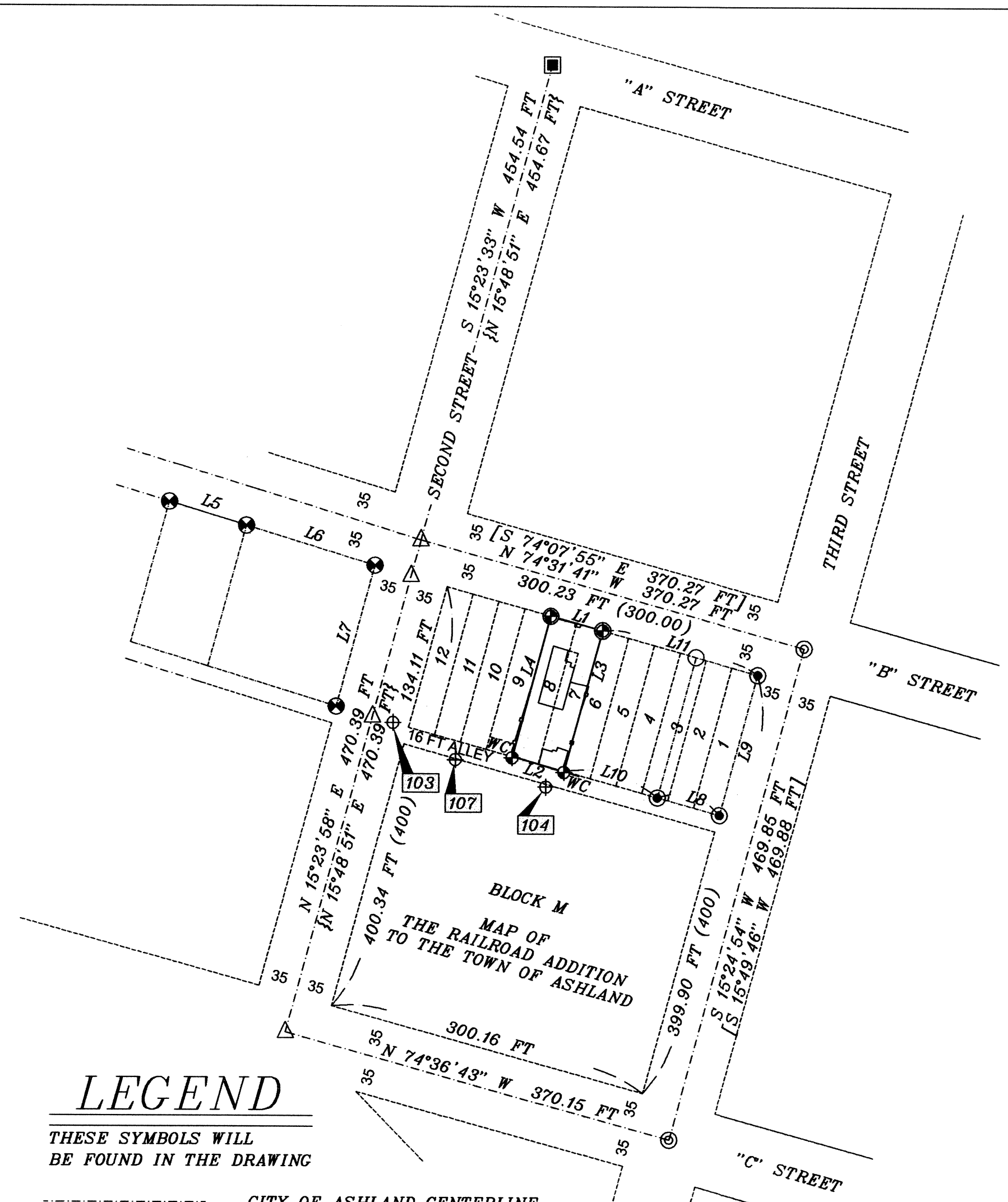
PROCEDURE: CENTERLINE MONUMENTS IN THE LOCAL AREA AND MONUMENTS ESTABLISHED DURING SURVEYS NO CS 20753 AND 20989 WERE RECOVERED AND USED TO CONTROL THIS SURVEY. UTILIZING THIS CONTROL, THE POSITIONS FOR THE CENTERLINE OF SECOND STREET AT THE INTERSECTIONS OF B AND C STREETS WERE CALCULATED AND HELD. NO MONUMENTS WERE FOUND AT THOSE LOCATIONS.

THE SUBDIVISION OF "BLOCK M," AS SHOWN ON SURVEY CS 20989 WAS FOUND TO BE VERY CLOSE TO THE CALCULATED LOT CORNERS FOR THIS SURVEY. NEW SIDEWALK CONSTRUCTION HAS REMOVED THE NW CORNER FOR SURVEY CS 20989, AND PLACED A ROCK WALL STONE ABOVE THE NE CORNER.

FENCES IN THE GENERAL AREA ENCROACH ON THE PROPERTY BOUNDARIES BY UP TO TWO FEET IN PLACES, ENCROACH ON THE ALLEY, AND ARE NOT CONSISTENT. THE EXISTING WHITALL GARAGE ENCROACHES A BIT ON THE ALLEY.

1 FOOT WITNESS CORNERS WERE SET SOUTH OF THE CORNER POINTS ON THE ALLEY SIDE DUE TO EXISTING FENCES. THE NORTH CORNER POINTS ARE IN THE SIDEWALK.

BASIS OF BEARING: GRID. FROM GPS TIES UTILIZING OREGON DEPARTMENT OF TRANSPORTATION'S GPS NETWORK ADJUSTED SOLUTIONS (ORGN). DATUM IS NAD83-2011 (EPOCH 2010.00) AND VERTICAL IS NAVD88 USING GEOID 12A. THE GRID TO GEODETIC BEARING CAN BE DETERMINED BY COMPARING THE THIRD STREET BEARING BETWEEN B AND C STREETS. COORDINATES ARE OREGON COORDINATE REFERENCE SYSTEM (OCRS) GRANTS PASS-ASHLAND ZONE IN INTERNATIONAL FEET. EQUIPMENT USED: LEICA GS14 GNSS GPS RECEIVER AND LEICA TCRP 1203 TCRP ROBOTIC TOTAL STATION.

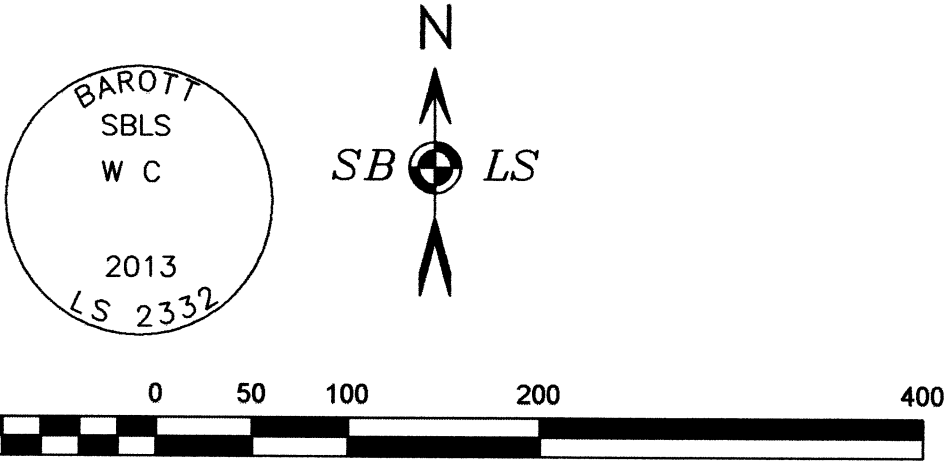


LEGEND

THESE SYMBOLS WILL BE FOUND IN THE DRAWING

- CITY OF ASHLAND CENTERLINE
- BOUNDARY LOCATED THIS SURVEY
- BOUNDARY SURVEYED PER CS 20753
- BOUNDARY SURVEYED PER CS 20989
- CALCULATED LINE
- FENCELINE

- MONUMENT DESTROYED BY SIDEWALK CONSTRUCTION
- ⊕ SET 5/8" X 24" IRON PIN WITH 2" ALUMINUM CAP MARKED AS SHOWN
- ⊙ SET 1" BRONZE CAP-STAMPED "SBLs LS2332" SET IN SIDEWALK
- ⊙ BRASS CAP IN MONUMENT CASE
- ⊙ MAG NAIL & WASHER OR REBAR & CAP- CS 20989
- ⊙ CALCULATED POINT
- ⊙ MAG NAIL AND WASHER-CS 20753
- ⊙ SQUARE BOLT IN MONUMENT CASE
- () RECORD FROM RAILROAD ADDITION TOWN PLAT
- [] RECORD FROM CS 20989
- { } RECORD FROM CS 20753
- RRA-TP RAILROAD ADDITION- TOWN PLAT
- CS FILED SURVEY- JACKSON COUNTY SURVEYORS OFFICE
- ⊕ MAG NAIL & BRASS WASHER- LS2332
- WC WITNESS CORNER SET 1 FT SOUTH OF CORNER POINT



RECEIVED
DATE 5-22-13 BY DR
This survey consists of:
1 sheet(s) Map
2 page(s) Narrative
JACKSON COUNTY SURVEYOR

S B L S
STEPHAN BAROTT LAND SURVEYING

REGISTERED PROFESSIONAL LAND SURVEYOR
Stephan Barott
OREGON JULY 28, 1988
STEPHAN L. BAROTT 2332
RENEWS: DECEMBER 31, 2013

1446 ST. ANDREW WAY
MEDFORD, OREGON 97504

CELL 541-510-8278
541-776-1272
fax 541-776-2956
sbarott@charter.net

MAP OF SURVEY

DRAWN	DATE	RICH & DEBRA WHITALL
SBLs	5-22-13	350 B STREET
APPROVED	DATE	ASHLAND, OR 97520
		391E09BA-6300
SCALE	SHEET	PROJECT NO.
1"=100'	1 OF 1	2013-12