

NARRATIVE

THE PURPOSE OF THIS SURVEY IS TO MONUMENT THE RIGHT OF WAY (R/W) ACQUIRED FOR THE CONSTRUCTION OF THE SOUTH MEDFORD INTERCHANGE, AN OREGON DEPARTMENT OF TRANSPORTATION (ODOT) PROJECT. THIS SURVEY PERPETUATES THE RESOLVED AND NEW ALIGNMENTS, PROPERTY LINES AND RIGHT OF WAY DEVELOPED FOR THE PROJECT BY ODOT'S GEOMETRICS UNIT, RIGHT OF WAY SECTION, SALEM, OREGON. THIS SURVEY IS BASED ON COUNTY SURVEY (CS) NO'S 17166 AND 19357 OF THE JACKSON COUNTY SURVEYOR'S OFFICE AND ODOT R/W DRAWING 1A-23-16. UTILIZING THE OREGON REAL-TIME GPS NETWORK (ORGN), A ONE STEP TRANSFORMATION WAS CREATED USING CONTROL POINTS 1096401-04 RECORDED ON CS 17166. THE PURPOSE OF THE TRANSFORMATION IS TO WORK IN TERMS OF THE COORDINATE SYSTEM INDICATED IN CS 17166. A RANDOM CHECK OF THE TRANSFORMATION WAS MADE THROUGHOUT THE PROJECT ON EXISTING MONUMENTATION. WITH THE RESULTS ACCEPTED AND VERIFIED, MONUMENTS WERE SET IN ACCORDANCE WITH THEIR RECORDED DEEDS AND ODOT'S MONUMENTATION POLICY. THE MONUMENT TABLES SHOW THE PERTINENT DATA OF THE MONUMENTATION. A SEARCH WAS MADE TO IDENTIFY ANY MONUMENTS DESTROYED DURING CONSTRUCTION. DESTROYED MONUMENTS LYING OUTSIDE THE NEW R/W WERE RESET AT THEIR RECORD POSITION, PER CS 17166. MONUMENTS LYING WITHIN THE ROADWAY WHERE NOT UNCOVERED, BUT THEIR RECORD POSITIONS ARE SHOWN ON THIS MAP AND LABELED IN THE MONUMENT TABLES. REFERENCE DEEDS ARE LABELED ON THE MAP AT THE CORRESPONDING PARCELS.

EQUIPMENT USED: LEICA GX1230 DUAL FREQUENCY GPS RECEIVER, LEICA TS15 TOTAL STATION

THIS IS A METRIC SURVEY USING GROUND DISTANCES AND GRID BEARING.

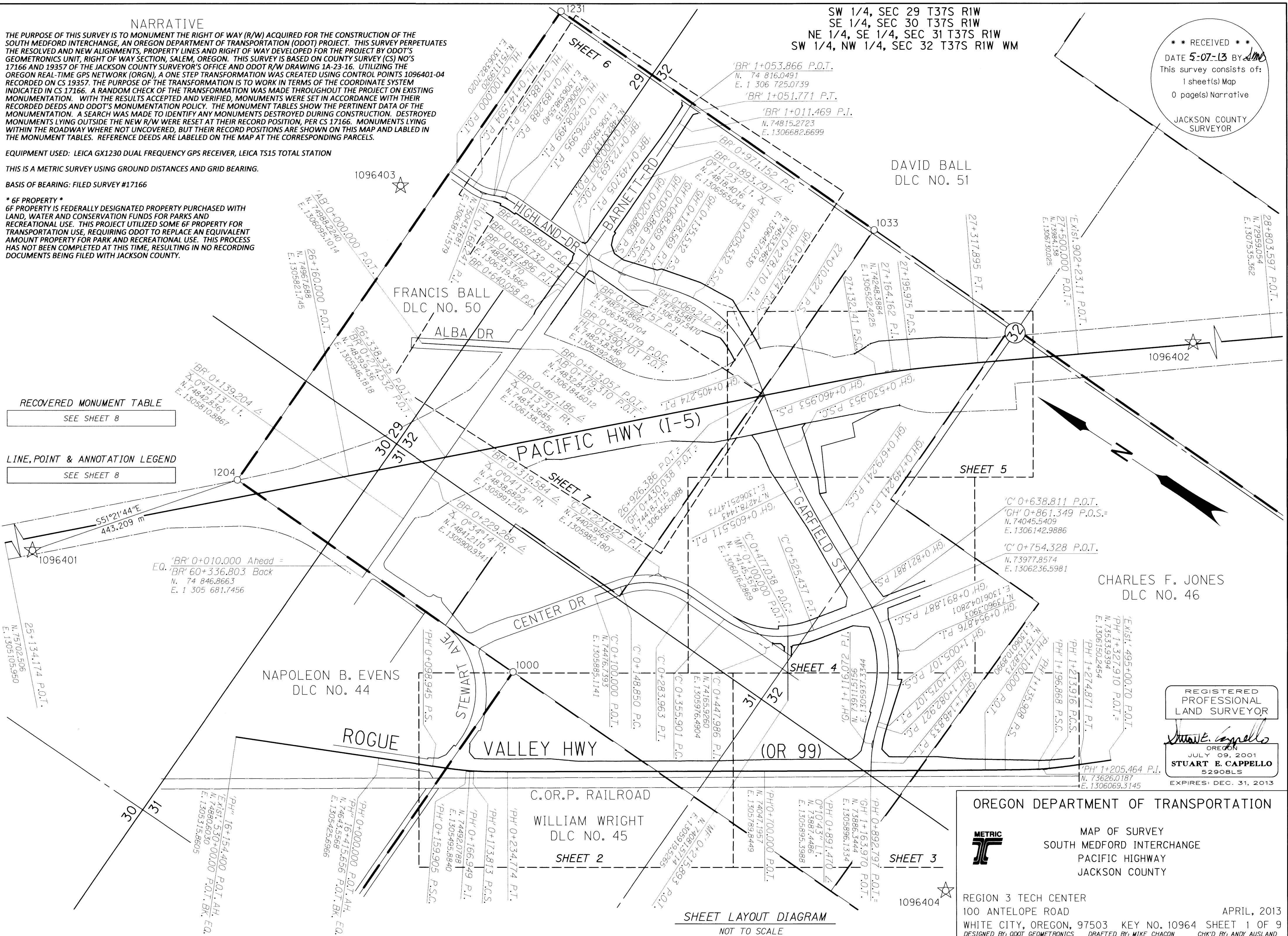
BASIS OF BEARING: FILED SURVEY #17166

* 6F PROPERTY *
6F PROPERTY IS FEDERALLY DESIGNATED PROPERTY PURCHASED WITH LAND, WATER AND CONSERVATION FUNDS FOR PARKS AND RECREATIONAL USE. THIS PROJECT UTILIZED SOME 6F PROPERTY FOR TRANSPORTATION USE, REQUIRING ODOT TO REPLACE AN EQUIVALENT AMOUNT PROPERTY FOR PARK AND RECREATIONAL USE. THIS PROCESS HAS NOT BEEN COMPLETED AT THIS TIME, RESULTING IN NO RECORDING DOCUMENTS BEING FILED WITH JACKSON COUNTY.

** RECEIVED **
DATE 5-07-13 BY *JMC*
This survey consists of:
1 sheet(s) Map
0 page(s) Narrative
JACKSON COUNTY SURVEYOR

RECOVERED MONUMENT TABLE
SEE SHEET 8

LINE, POINT & ANNOTATION LEGEND
SEE SHEET 8



SW 1/4, SEC 29 T37S R1W
SE 1/4, SEC 30 T37S R1W
NE 1/4, SEC 31 T37S R1W
SW 1/4, NW 1/4, SEC 32 T37S R1W WM

DAVID BALL
DLC NO. 51

FRANCIS BALL
DLC NO. 50

CHARLES F. JONES
DLC NO. 46

NAPOLEON B. EVENS
DLC NO. 44

WILLIAM WRIGHT
DLC NO. 45

REGISTERED PROFESSIONAL LAND SURVEYOR
Stuart E. Cappello
OREGON
JULY 09, 2001
STUART E. CAPPELLO
5290BLS
EXPIRES: DEC. 31, 2013

OREGON DEPARTMENT OF TRANSPORTATION
METRIC
MAP OF SURVEY
SOUTH MEDFORD INTERCHANGE
PACIFIC HIGHWAY
JACKSON COUNTY

REGION 3 TECH CENTER
100 ANTELOPE ROAD
WHITE CITY, OREGON, 97503 KEY NO. 10964 SHEET 1 OF 9
DESIGNED BY: ODOT GEOMETRICS DRAFTED BY: MIKE CHACON CHK'D BY: ANDY AUSLAND
APRIL, 2013

SHEET LAYOUT DIAGRAM
NOT TO SCALE

RECOVERED MONUMENT TABLE - SHEET 4
(RECOVERED PER CS 17166 UNLESS STATED OTHERWISE)

CS=JACKSON COUNTY FILED SURVEY FD=FOUND IR=IRON ROD IP=IRON PIPE NF=NOT FOUND
w/=WITH RPC=RED PLASTIC CAP YPC=YELLOW PLASTIC CAP OPC=ORANGE PLASTIC CAP
DN=DOWN

PT. NO.	STATION	OFFSET	LDP NORTHING	LDP EASTING	DATE	DESCRIPTION
1075	'C' 0+260.242	-15.192	74355.703	1305994.071	9/10/2012	FD IR W/ YPC "HARDEY 1990", UP 250mm
1077	'C' 0+283.380	-13.570	74330.214	1305994.007	9/10/2012	FD 5/8" IR, BENT
1078	-	-	74330.556	1305980.296	9/10/2012	FD BRASS STEM INSIDE 2" IP, DN 180mm, NO MON CASE
1079	-	-	74363.460	1306052.355	9/10/2012	NF
1080	'C' 0+283.238	13.963	74330.891	1305966.482	9/10/2012	FD 5/8" IR
1081	'C' 0+299.008	13.864	74315.194	1305966.206	9/10/2012	FD 5/8" IR
1082	-	-	74279.673	1305965.361	9/10/2012	NF, RESET AS 5072
1083	-	-	74280.795	1305918.518	9/10/2012	FD 5/8" IR
1084	-	-	74282.884	1305905.392	9/10/2012	NF
1087	-	-	74251.750	1305917.746	9/10/2012	FD IR, BADLY BENT
1088	-	-	74270.682	1305901.750	9/10/2012	NF
1106	-	-	74180.810	1305990.433	9/10/2012	NF
1111	-	-	73997.314	1306174.176	9/10/2012	FD 5/8" IR w/ YPC "ILLEGIBLE"
1112	-	-	73975.271	1306173.375	2/19/2013	FD IR w/ RPC "HARDEY LS1990"
1113	-	-	73976.947	1306168.083	9/10/2012	FD 5/8" IR, BENT W'LY
1114	-	-	73973.761	1306167.947	9/10/2012	FD 5/8" IR, BENT NW'LY
1115	-	-	74034.085	1306175.512	9/10/2012	FD IR w/ BROKEN YPC
1116	-	-	74055.581	1306191.135	9/10/2012	FD LEAD & TACK
1117	-	-	74080.849	1306199.248	9/10/2012	NF, RESET AS 5057
1118	-	-	74097.251	1306202.694	9/10/2012	FD 5/8" IR
1119	-	-	74131.535	1306209.871	9/10/2012	FD 5/8" IR
1120	-	-	74187.844	1306208.533	9/10/2012	NF
1121	-	-	74218.198	1306205.087	9/10/2012	NF
1122	-	-	74238.950	1306200.657	9/10/2012	FD 5/8" IR, BENT W'LY, DN 1.2'
1123	-	-	74247.987	1306198.700	9/10/2012	FD 5/8" IR, DN 1'
1164	-	-	74005.706	1306329.255	9/10/2012	FD 1" IR, 500mm DEEP
1165	-	-	74002.720	1306329.958	9/10/2012	FD IR W/ YPC "KAISER LS803"
1166	-	-	74002.583	1306329.930	9/10/2012	FD 1" IP
1229	-	-	74383.088	1306070.435	9/10/2012	FD 5/8" IR
1255	'C' 0+279.784	-13.601	74334.152	1305994.067	9/10/2012	FD 5/8" IR, BENT E'LY, CS 18547
1256	'C' 0+318.862	-13.583	74294.687	1305993.168	9/10/2012	FD 5/8" w/ BROKEN YPC, CS 18843
1257	-	-	74273.349	1305992.658	9/10/2012	NF, RESET AS 5046
1258	-	-	74279.341	1305998.890	9/10/2012	NF, REPLACED BY 1306
1259	-	-	74139.960	1305989.474	9/10/2012	FD 5/8" IR w/ OPC "HARDY ENG & ASSOC.", CS 18843
1260	-	-	74139.729	1305998.866	9/10/2012	NF, CS 18843
1261	-	-	74159.804	1306029.443	9/10/2012	NF, CS 18843
1262	-	-	74189.333	1306021.269	9/10/2012	NF, CS 18843
1263	-	-	74118.615	1305988.942	9/10/2012	FD 5/8" IR w/ OPC "HARDY ENG & ASSOC.", CS 18843
1264	-	-	74128.094	1306003.350	9/10/2012	NF, CS 18843
1265	-	-	74126.784	1306013.256	9/10/2012	FD 5/8" IR
1266	-	-	74099.045	1306043.842	9/10/2012	NF, CS 18843
1267	-	-	74065.918	1306089.584	9/10/2012	NF, CS 18843
1306	-	-	74279.342	1305998.841	2/19/2013	FD IR w/ YPC "HOFFBUHR AND ASSOC. INC." (REPLACES 1258)

RECOVERED MONUMENT TABLE - SHEET 5
(RECOVERED PER CS 17166 UNLESS STATED OTHERWISE)

CS=JACKSON COUNTY FILED SURVEY FD=FOUND IR=IRON ROD
NF=NOT FOUND RPC=RED PLASTIC CAP w/=WITH YPC=YELLOW PLASTIC CAP

PT. NO.	STATION	OFFSET	LDP NORTHING	LDP EASTING	DATE	DESCRIPTION
1008	-	-	74111.453	1306659.440	9/10/2012	NF
1023	-	-	74532.726	1306366.065	9/10/2012	FD 5/8" IR
1026	-	-	74542.617	1306344.075	9/10/2012	FD IR W/ YPC "JACKSON CS"
1034	-	-	74421.382	1306477.076	9/10/2012	NF
1035	-	-	74475.064	1306448.486	9/10/2012	NF, REPLACED BY 1301
1036	-	-	74496.144	1306430.618	9/10/2012	NF
1037	-	-	74495.108	1306426.213	9/10/2012	NF
1123	-	-	74247.987	1306198.700	9/10/2012	FD 5/8" IR, DN 1'
1124	-	-	74426.212	1306290.888	9/10/2012	NF
1184	-	-	74103.485	1306690.488	9/10/2012	FD 5/8" IR
1185	-	-	74154.859	1306650.123	9/10/2012	FD 5/8" IR
1186	-	-	74106.948	1306695.059	9/10/2012	FD 1" IR, DN 200mm
1187	-	-	74106.841	1306694.932	9/10/2012	FD 5/8" IR, BENT NW'LY
1188	-	-	74125.096	1306588.142	9/10/2012	NF
1189	-	-	74221.678	1306508.192	9/10/2012	NF
1190	-	-	74250.992	1306572.747	9/10/2012	NF
1191	-	-	74270.435	1306556.114	9/10/2012	NF
1199	-	-	74358.834	1306363.960	9/10/2012	NF
1200	-	-	74353.981	1306394.898	9/10/2012	NF
1201	-	-	74250.459	1306476.111	9/10/2012	NF
1226	-	-	74175.460	1306548.884	9/10/2012	NF
1241	-	-	74217.214	1306566.89	9/10/2012	NF
1301	-	-	74475.074	1306448.486	2/19/2013	FD 5/8" IR w/ RPC "D. HUCK L.S. 2023" PER CS 20264 (REPLACES 1035)

RECOVERED MONUMENT TABLE - SHEET 6
(RECOVERED PER CS 17166 UNLESS STATED OTHERWISE)

CS=JACKSON COUNTY FILED SURVEY FD=FOUND IR=IRON ROD NF=NOT FOUND w/=WITH
OPC=ORANGE PLASTIC CAP RPC=RED PLASTIC CAP YPC=YELLOW PLASTIC CAP DN=DOWN

PT. NO.	STATION	OFFSET	LDP NORTHING	LDP EASTING	DATE	DESCRIPTION
1009	-	-	74774.470	1306715.572	9/10/2012	FD IR w/ RPC "ILLEGIBLE"
1010	-	-	74803.386	1306709.853	9/10/2012	NF, REPLACED BY 5110
1011	-	-	74803.987	1306640.150	9/10/2012	NF
1012	-	-	74805.327	1306591.402	9/10/2012	NF
1016	-	-	74808.239	1306373.563	9/10/2012	NF
1029	-	-	74656.230	1306369.160	9/10/2012	FD 5/8" IR, DN 440mm
1038	-	-	74526.372	1306557.657	9/10/2012	NF
1039	-	-	74827.387	1306674.471	9/10/2012	NF
1129	-	-	74842.133	1306388.586	9/10/2012	NF
1214	-	-	74804.863	1306716.487	9/10/2012	NF
1217	-	-	74827.565	1306717.513	9/10/2012	NF
1228	-	-	74806.034	1306565.865	9/10/2012	NF
1232	-	-	75065.085	1306392.063	9/10/2012	NF, REPLACED BY 5097
1233	-	-	75028.616	1306399.937	9/10/2012	NF, REPLACED BY 1304
1234	-	-	74993.327	1306409.701	9/10/2012	NF, REPLACED BY 5098
1235	-	-	74982.649	1306409.992	9/10/2012	NF, REPLACED BY 1305
1236	-	-	74891.130	1306407.405	9/10/2012	FD 5/8" IR, DN 300mm, BENT S'LY
1304	-	-	75028.600	1306399.927	2/19/2013	FD IR w/ YPC "KAISER RLS 803" PER CS 16823 (REPLACES 1233)
1305	-	-	74982.610	1306409.957	2/19/2013	FD IR w/ OPC "B. KAISER RLS 52923" PER CS 20507 (REPLACES 1235)

RECOVERED MONUMENT TABLE - SHEET 7
(RECOVERED PER CS 17166 UNLESS STATED OTHERWISE)

CS=JACKSON COUNTY FILED SURVEY FD=FOUND IR=IRON ROD DN=DOWN
NF=NOT FOUND RPC=RED PLASTIC CAP w/=WITH YPC=YELLOW PLASTIC CAP

PT. NO.	STATION	OFFSET	LDP NORTHING	LDP EASTING	DATE	DESCRIPTION
1013	-	-	74811.594	1306251.192	9/10/2012	NF
1014	-	-	74809.901	1306313.572	9/10/2012	NF
1015	-	-	74795.116	1306297.902	9/10/2012	NF, REPLACED BY 1300
1017	-	-	74736.472	1306300.131	9/10/2012	FD 5/8" IR
1018	-	-	74736.974	1306304.711	9/10/2012	FD IR w/ RPC "ILLEGIBLE"
1019	-	-	74716.66	1306300.46	9/10/2012	NF
1020	-	-	74729.301	1306266.378	9/10/2012	FD 5/8" IR
1021	-	-	74730.654	1306272.765	9/10/2012	FD 5/8" IR
1024	-	-	74617.137	1306297.197	9/10/2012	NF
1025	-	-	74631.444	1306294.365	9/10/2012	FD IR W/ YPC "JACKSON CS", BENT WEST
1028	-	-	74633.29	1306283.16	9/10/2012	NF
1032	-	-	74773.232	1306260.294	9/10/2012	NF
1040	-	-	74923.483	1306075.904	9/10/2012	FD IR W/ YPC "L.J. FRIAR & ASSOC."
1041	-	-	74923.283	1306075.887	9/10/2012	FD 5/8" IR
1042	-	-	74881.236	1306074.782	9/10/2012	FD IR W/ RPC "D.A. EDWARDS LS2339"
1058	-	-	74685.934	1306043.029	9/10/2012	FD 5/8" IR (ODOT STA 870+00)
1059	-	-	74665.394	1306062.975	9/10/2012	FD IR W/ YPC "HARDEY LS1990"
1060	-	-	74642.346	1306085.423	9/10/2012	NF
1061	-	-	74642.534	1306085.288	9/10/2012	NF
1125	-	-	74514.648	1306195.043	9/10/2012	NF
1127	-	-	74839.721	1306243.289	9/10/2012	NF
1128	-	-	74840.974	1306199.848	9/10/2012	NF
1134	-	-	74453.471	1306137.300	9/10/2012	FD IR W/ RPC "HARDEY ENG. & ASSOC"
1207	-	-	74828.259	1306200.448	9/10/2012	NF
1218	-	-	74843.943	1306163.263	9/10/2012	NF
1219	-	-	74848.341	1306181.458	9/10/2012	NF
1220	-	-	74820.92	1306194.036	9/10/2012	NF
1221	-	-	74819.711	1306171.949	9/10/2012	NF
1300	-	-	74795.117	1306297.889	4/16/2013	FD CONCRETE NAIL IN ASPHALT (REPLACES 1015)

OREGON DEPARTMENT OF TRANSPORTATION



MAP OF SURVEY
SOUTH MEDFORD INTERCHANGE
PACIFIC HIGHWAY
JACKSON COUNTY

REGISTERED
PROFESSIONAL
LAND SURVEYOR

Stuart E. Cappello
OREGON
JULY 09, 2001
STUART E. CAPPELLO
52908LS
EXPIRES: DEC. 31, 2013

REGION 3 TECH CENTER
100 ANTELOPE ROAD
WHITE CITY, OREGON, 97503 KEY NO. 10964 SHEET 9 OF 9
DESIGNED BY: ODOT GEOMETRICS DRAFTED BY: MIKE CHACON CHK'D BY: ANDY AUSLAND
APRIL, 2013

RECOVERED MONUMENT TABLE - SHEET 1
(RECOVERED PER CS 17166 UNLESS STATED OTHERWISE)

CS=JACKSON COUNTY FILED SURVEY FD=FOUND IR=IRON ROD
AC=ALUMINUM CAP w/=WITH

PT. NO.	STATION	OFFSET	LDP NORTHING	LDP EASTING	DATE	DESCRIPTION
1000	-	-	74525.297	1305689.319	9/10/2012	FD 2 1/2" BRASS DISK "T37S R1W NE DLC 45 CS 1994"
1033	-	-	74415.212	1306714.753	9/10/2012	FD 2 1/2" BRASS DISK IN MON. CASE "T37S R1W SE DLC 50 CS 1994"
1204	-	-	75132.326	1305704.820	9/10/2012	FD 2 1/2" BRASS DISK "T37S R1W NW DLC 50 CS 1985"
1231	-	-	75104.733	1306733.877	9/10/2012	FD 3" BRASS DISK "T37S R1W NE DLC 50 CS 1987"
1096401	-	-	75409.064	1305358.626	9/10/2012	FD 5/8" IR w/ 2" AC "OREGON STATE HWY DIV. 1096401 CONTROL POINT" PER CS 19357
1096402	-	-	73821.497	1306861.591	9/10/2012	FD 5/8" IR w/ 2" AC "OREGON STATE HWY DIV. 1096402 CONTROL POINT" PER CS 19357
1096403	-	-	75175.980	1306311.208	9/10/2012	FD 1" COPPER CAP "ODOT 1096403 CONTROL" PER CS 19357
1096404	-	-	73649.491	1305793.552	9/10/2012	FD 1" COPPER CAP "ODOT 1096404 CONTROL" PER CS 19357

RECOVERED MONUMENT TABLE - SHEET 2
(RECOVERED PER CS 17166 UNLESS STATED OTHERWISE)

CS=JACKSON COUNTY FILED SURVEY FD=FOUND IR=IRON ROD IP=IRON PIPE
NF=NOT FOUND w/=WITH YPC=YELLOW PLASTIC CAP

PT. NO.	STATION	OFFSET	LDP NORTHING	LDP EASTING	DATE	DESCRIPTION
1000	-	-	74525.297	1305689.319	9/10/2012	FD 2 1/2" BRASS DISK "T37S R1W NE DLC 45 CS 1994"
1001	-	-	74533.933	1305686.776	9/10/2012	NF
1093	-	-	74220.887	1305690.784	9/10/2012	NF
1094	-	-	74226.952	1305689.908	9/10/2012	NF
1095	-	-	74230.48	1305688.587	9/10/2012	NF
1096	-	-	74260.336	1305668.844	9/10/2012	NF
1097	-	-	74320.241	1305759.34	9/10/2012	NF
1132	-	-	74524.764	1305389.622	9/10/2012	FD 3" BRASS DISK, BM C199
1135	-	-	74432.174	1305707.504	9/10/2012	FD IR W/ YPC "HARDEY LS1990", 200mm DEEP
1141	-	-	74358.854	1305596.771	9/10/2012	NF
1142	-	-	74442.703	1305746.904	9/10/2012	FD IR W/ YPC "HARDEY LS1990"
1143	-	-	74443.287	1305724.268	9/10/2012	FD 5/8" IR, 300mm DEEP
1144	-	-	74414.231	1305636.418	9/10/2012	FD IR W/ YPC "HARDEY LS1990", 200mm DEEP
1145	-	-	74468.238	1305600.765	9/10/2012	FD IR W/ YPC "HARDEY LS1990"
1146	-	-	74516.979	1305568.562	9/10/2012	FD IR W/ YPC "HARDEY LS1990"
1169	-	-	74138.881	1305693.985	9/10/2012	FD 1 1/4" IP, DN 0.2'
1170	-	-	74162.829	1305686.454	9/10/2012	FD PK NAIL (PHOTOGRAMMETRY CONTROL POINT)
1171	-	-	74304.667	1305584.246	9/10/2012	FD 1 1/4" IR, 200mm DEEP
1179	-	-	74235.223	1305665.602	9/10/2012	NF
1180	-	-	74289.485	1305642.412	9/10/2012	NF
1181	-	-	74435.341	1305533.374	9/10/2012	NF
1182	-	-	74486.892	1305500.822	9/10/2012	NF
1183	-	-	74499.012	1305494.062	9/10/2012	NF

LINE, POINT, & ANNOTATION LEGEND

GOVERNMENT SECTION LINE		DESTROYED GPS STATION
GOVERNMENT 1/4 SECTION LINE		FOUND GPS STATION
RESOLVED CENTERLINE		DESTROYED NETWORK POINT
RAILROAD RIGHT OF WAY		FOUND NETWORK POINT
EXISTING RIGHT OF WAY OR PROPERTY LINE		DESTROYED MONUMENT
PRIOR RIGHT OF WAY OR PROPERTY LINE		FOUND MONUMENT
NEW RIGHT OF WAY (ACCESS CONTROLLED)		SET MONUMENT
EDGE OF PAVEMENT		DESTROYED BENCHMARK
FALSE CALL		FOUND BENCHMARK
CENTER LINE PER CS 17166		CALCULATED POINT
		RECORD INFORMATION PER CS 17166
		ODOT ACQUISITION DEED (DOCUMENT NO. PER JACKSON COUNTY OFFICIAL RECORDS)
		(FC) FALSE CALL

RECOVERED MONUMENT TABLE - SHEET 3
(RECOVERED PER CS 17166 UNLESS STATED OTHERWISE)

CS=JACKSON COUNTY FILED SURVEY FD=FOUND IR=IRON ROD AC=ALUMINUM CAP
IP=IRON PIPE NF=NOT FOUND RPC=RED PLASTIC CAP w/=WITH

PT. NO.	STATION	OFFSET	LDP NORTHING	LDP EASTING	DATE	DESCRIPTION
1004	-	-	73908.446	1305894.743	9/10/2012	NF
1085	-	-	74170.621	1305921.198	9/10/2012	FD IR W/ 1 1/2" AC "JACKSON CS"
1086	-	-	74195.318	1305927.581	9/10/2012	FD IR W/ 1 1/2" AC "JACKSON CS"
1089	-	-	74102.902	1305885.933	9/10/2012	FD IR W/ 1 1/2" AC "JACKSON CS"
1090	-	-	74102.730	1305961.144	9/10/2012	NF, REPLACED BY 1307
1091	-	-	74065.661	1305973.962	9/10/2012	FD 2" BRASS DISK IN MON. CASE "LS1990"
1092	-	-	74014.296	1305827.279	9/10/2012	NF
1101	-	-	73964.934	1306016.079	9/10/2012	FD 5/8" IR, BENT W'LY
1102	-	-	73957.302	1306029.586	9/10/2012	NF
1103	-	-	74039.903	1305995.329	9/10/2012	FD 5/8" IR, BENT N'LY
1104	-	-	74050.420	1305992.417	9/10/2012	FD IR W/ RPC "HARDEY LS1990"
1105	-	-	74084.962	1305988.151	9/10/2012	FD IR w/ BROKEN RPC
1107	-	-	74043.095	1305965.947	9/10/2012	FD 5/8" IR, 350mm DEEP, BENT NE'LY
1109	-	-	73933.415	1305957.075	9/10/2012	NF
1110	-	-	73926.969	1305933.598	9/10/2012	NF
1152	-	-	74117.752	1305975.316	9/10/2012	NF
1153	-	-	73930.427	1306011.371	9/10/2012	NF
1154	-	-	73912.239	1306002.645	9/10/2012	NF, REPLACED BY 1302
1155	-	-	73903.511	1305970.973	9/10/2012	NF
1156	-	-	73891.372	1305927.201	9/10/2012	NF
1157	-	-	73870.583	1305919.431	9/10/2012	NF
1158	-	-	73805.687	1305962.587	9/10/2012	NF
1159	-	-	73832.879	1306017.732	9/10/2012	NF
1160	-	-	73874.022	1306101.292	9/10/2012	FD 1 1/2" IP
1161	-	-	73929.329	1306064.524	9/10/2012	FD 1 1/2" IP
1162	-	-	73931.982	1306062.741	9/10/2012	FD 1" IR W/ CHISELED "X"
1163	-	-	73846.873	1306046.104	9/10/2012	FD IR W/ YPC "DW BAKER PLS1978"
1168	-	-	74023.240	1305770.544	9/10/2012	FD 2" BRASS DISK W/ PUNCH, 300mm DEEP
1172	-	-	73871.419	1305871.051	9/10/2012	NF, RESET AS 5043
1173	-	-	73809.154	1305912.313	9/10/2012	NF, RESET AS 5042
1174	-	-	73777.224	1305933.420	9/10/2012	FD IR W/ RPC "HARDEY ENG. & ASSOC."
1175	-	-	73906.232	1305923.909	9/10/2012	NF
1176	-	-	73887.449	1305895.399	9/10/2012	NF
1177	-	-	74008.576	1305832.276	9/10/2012	NF
1178	-	-	74031.756	1305800.022	9/10/2012	NF
1197	-	-	74068.401	1305909.086	9/10/2012	NF, REPLACED BY 1303
1198	-	-	73683.886	1306030.819	9/10/2012	NF
1206	-	-	73915.254	1305912.27	9/10/2012	NF
1209	-	-	73887.968	1305909.034	9/10/2012	NF
1210	-	-	73894.212	1305915.157	9/10/2012	NF
1211	-	-	73929.071	1305880.49	9/10/2012	NF
1212	-	-	73913.443	1305906.999	9/10/2012	NF
1213	-	-	73932.871	1305967.003	9/10/2012	NF
1243	-	-	73633.717	1306065.449	9/10/2012	NF
1244	-	-	73620.249	1306075.758	9/10/2012	NF
1245	-	-	73573.748	1306115.167	9/10/2012	NF
1246	-	-	73663.680	1306109.506	9/10/2012	FD 5/8" IR
1247	-	-	73623.827	1306056.853	9/10/2012	FD 1 1/4" IR
1248	-	-	73579.834	1306093.531	9/10/2012	FD 5/8" IR
1249	-	-	73575.317	1306128.004	9/10/2012	FD 3" BRASS DISK BM C203
1250	-	-	73613.058	1306147.587	9/10/2012	FD 1 1/2" IRON BOLT
1302	-	-	73912.233	1306002.661	2/19/2013	FD IR W/ RPC "BLS PLS913" (REPLACES 1154)
1303	-	-	74068.403	1305909.082	2/26/2013	FD IR w/ 1.5" AC "JACKSON C.S.", DN 0.3' PER CS 16180 (REPLACES 1197)
1307	-	-	74102.763	1305961.123	9/10/2012	FD TACK W/ 3/4" BRASS WASHER "LS 2023", IN CURB FACE (REPLACES

REGISTERED PROFESSIONAL LAND SURVEYOR
Stuart E. Cappello
OREGON JULY 09, 2001
STUART E. CAPPELLO
52908LS
EXPIRES: DEC. 31, 2013

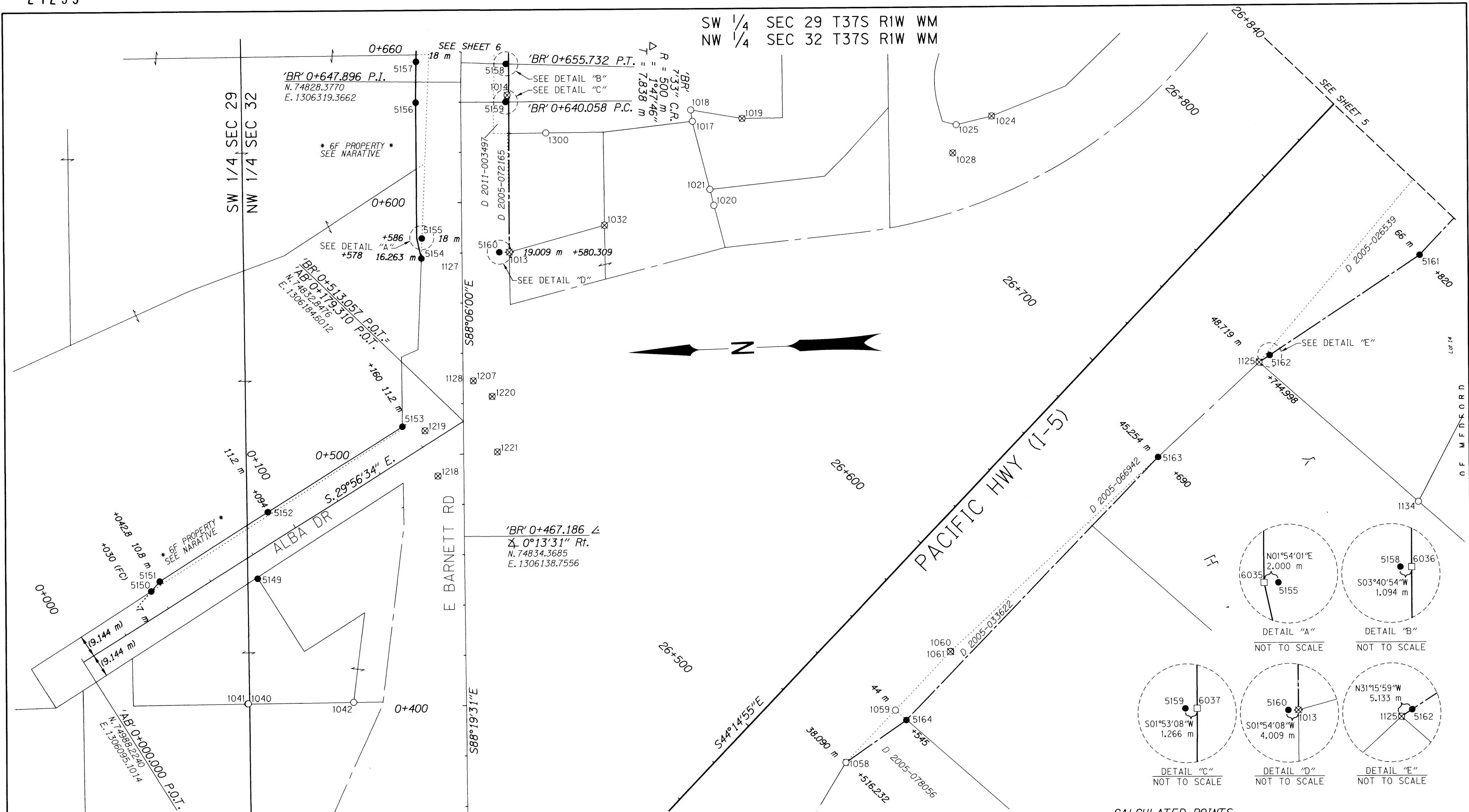
OREGON DEPARTMENT OF TRANSPORTATION



MAP OF SURVEY
SOUTH MEDFORD INTERCHANGE
PACIFIC HIGHWAY
JACKSON COUNTY

REGION 3 TECH CENTER
100 ANTELOPE ROAD

APRIL, 2013
WHITE CITY, OREGON, 97503 KEY NO. 10964 SHEET 8 OF 9
DESIGNED BY: ODOT GEOMETRONICS DRAFTED BY: MIKE CHACON CHK'D BY: ANDY AUSLAND

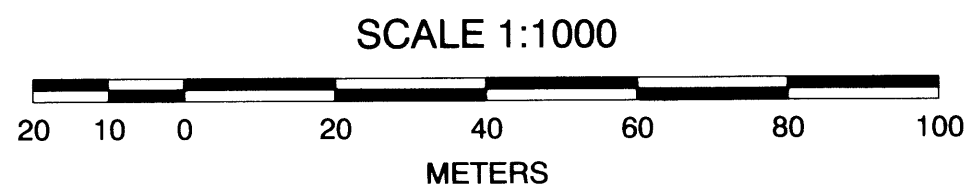


SET MONUMENT TABLE AC-ALUMINUM CAP IR-REBAR (30mm x .76m) w/=WITH

PT. NO.	STATION	OFFSET	LDP NORTHING	LDP EASTING	DATE	DESCRIPTION
5149	'AB' 0+076.422	9.077	74917.472	1306125.381	9/4/2012	SET 16 mm IR w/ 50 mm AC "ODOT RESET" (REPLACES 1043)
5150	'AB' 0+037.841	-9.328	74960.090	1306122.072	9/4/2012	SET 16 mm IR w/ 50 mm AC "ODOT RIGHT OF WAY"
5151	'AB' 0+042.800	-10.800	74956.527	1306125.823	9/4/2012	SET 16 mm IR w/ 50 mm AC "ODOT RIGHT OF WAY"
5152	'AB' 0+094.000	-11.200	74912.361	1306151.725	9/4/2012	SET 16 mm IR w/ 50 mm AC "ODOT RIGHT OF WAY"
5153	'BR' 0+157.576	-11.200	74857.271	1306183.458	9/4/2012	SET 16 mm IR w/ 50 mm AC "ODOT RIGHT OF WAY"
5154	'BR' 0+578.000	-16.263	74846.948	1306250.048	9/4/2012	SET 16 mm IR w/ 50 mm AC "ODOT RIGHT OF WAY"
5155	'BR' 0+586.000	-16.000	74846.420	1306258.035	9/5/2012	SET 25 mm COPPER PLUG "ODOT REF"
5156	'BR' 0+640.058 P.C.	-18.000	74846.627	1306312.130	9/5/2012	SET 16 mm IR w/ 50 mm AC "ODOT RIGHT OF WAY"
5157	'BR' 0+655.732 P.T.	-18.000	74845.834	1306328.348	9/5/2012	SET 16 mm IR w/ 50 mm AC "ODOT RIGHT OF WAY"
5158	'BR' 0+655.732 P.T.	18.000	74809.909	1306326.027	9/5/2012	SET 25 mm COPPER PLUG "ODOT REF"
5159	'BR' 0+640.058 P.C.	18.000	74810.647	1306310.936	9/5/2012	SET 25 mm COPPER PLUG "ODOT REF"
5160	'BR' 0+580.309	15.000	74815.626	1306251.319	9/5/2012	SET 25 mm COPPER PLUG "ODOT REF"
5161	26+820.000	66.000	74448.865	1306234.998	9/26/2012	SET 16 mm IR w/ 50 mm AC "ODOT RIGHT OF WAY"
5162	26+750.000	49.872	74510.261	1306197.707	9/26/2012	SET 16 mm IR w/ 50 mm AC "ODOT RIGHT OF WAY REF"
5163	26+690.000	45.254	74556.462	1306159.149	9/26/2012	SET 16 mm IR w/ 50 mm AC "ODOT RIGHT OF WAY"
5164	26+545.000	44.000	74661.203	1306058.870	9/26/2012	SET 16 mm IR w/ 50 mm AC "ODOT RIGHT OF WAY"

CALCULATED POINTS

PT. NO.	STATION	OFFSET	LDP NORTHING	LDP EASTING
6035	'BR' 0+586.000	-18.000	74848.419	1306258.101
6036	'BR' 0+655.732 P.T.	19.094	74808.817	1306325.957
6037	'BR' 0+640.058 P.C.	19.266	74809.382	1306310.894



RECOVERED MONUMENT TABLE
SEE SHEET 9

LINE, POINT & ANNOTATION LEGEND
SEE SHEET 8

REGISTERED PROFESSIONAL LAND SURVEYOR
Stuart E. Cappello
STUART E. CAPPELLO
52908LS
EXPIRES: DEC. 31, 2013

OREGON DEPARTMENT OF TRANSPORTATION

METRIC

MAP OF SURVEY
SOUTH MEDFORD INTERCHANGE
PACIFIC HIGHWAY
JACKSON COUNTY

REGION 3 TECH CENTER
100 ANTELOPE ROAD
WHITE CITY, OREGON, 97503
DESIGNED BY: ODOT GEOMETRONICS DRAFTED BY: MIKE CHACON CHK'D BY: ANDY AUSLAND

APRIL, 2013
KEY NO. 10964 SHEET 7 OF 9

SET MONUMENT TABLE AC=ALUMINUM CAP IR=REBAR (30mm x .76m) w/=WITH

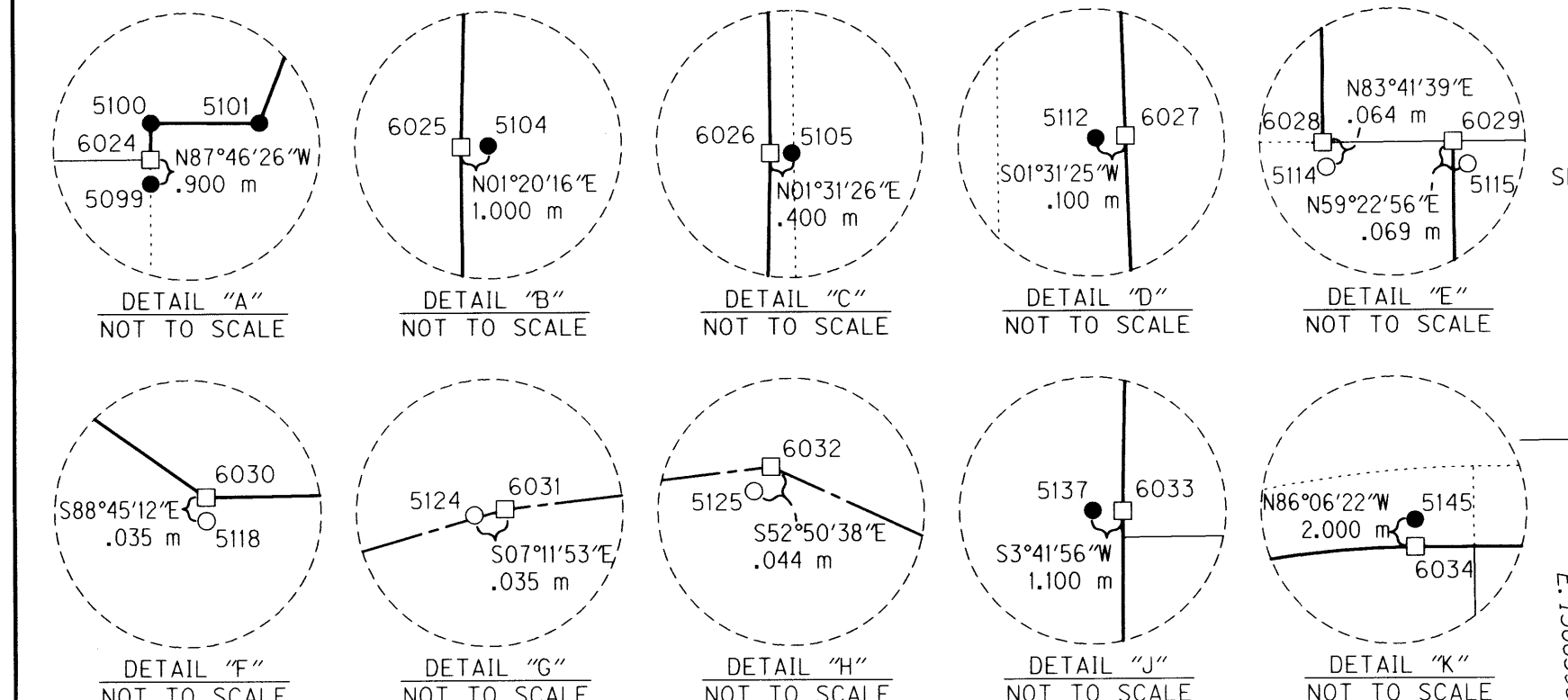
Table with columns: PT. NO., STATION, OFFSET, LDP NORTHING, LDP EASTING, DATE, DESCRIPTION. Contains survey data for points 5097 to 5122.

NE 1/4 SEC 32 SET MONUMENT TABLE AC=ALUMINUM CAP IR=REBAR (30mm x .76m) w/=WITH

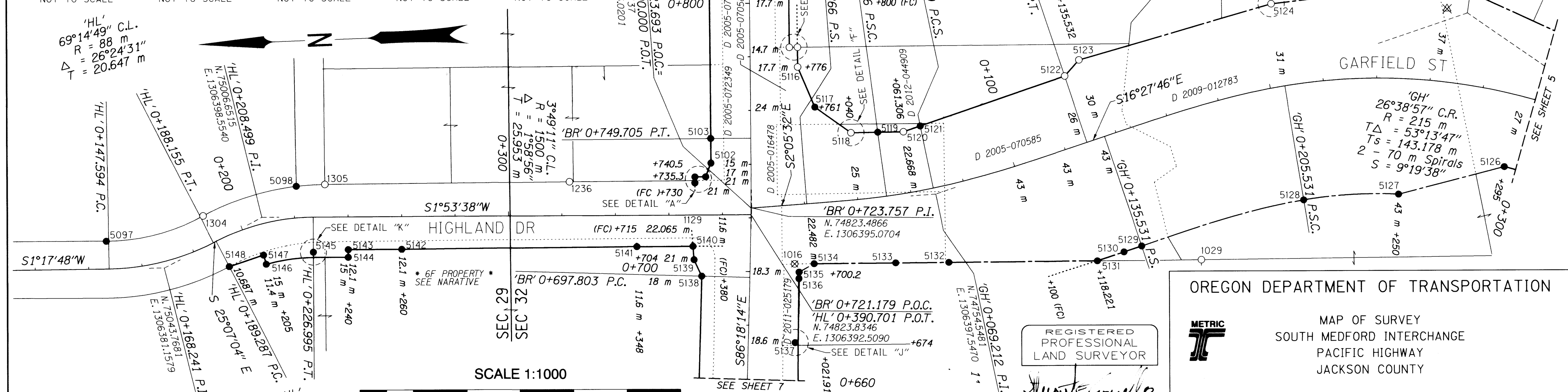
Table with columns: PT. NO., STATION, OFFSET, LDP NORTHING, LDP EASTING, DATE, DESCRIPTION. Contains survey data for points 5109 to 5112.

SET MONUMENT TABLE AC=ALUMINUM CAP IR=REBAR (30mm x .76m) w/=WITH

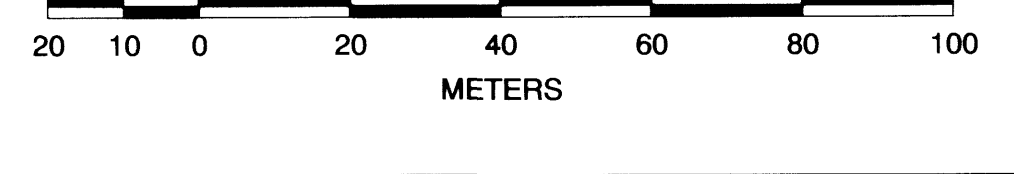
Table with columns: PT. NO., STATION, OFFSET, LDP NORTHING, LDP EASTING, DATE, DESCRIPTION. Contains survey data for points 5123 to 5148.



CALCULATED POINTS table with columns: PT. NO., STATION, OFFSET, LDP NORTHING, LDP EASTING. Lists points 6024 to 6034.



SW 1/4 SEC 29 T37S RIW WM
NW 1/4 SEC 32 T37S RIW WM
NE 1/4 SEC 32 T37S RIW WM



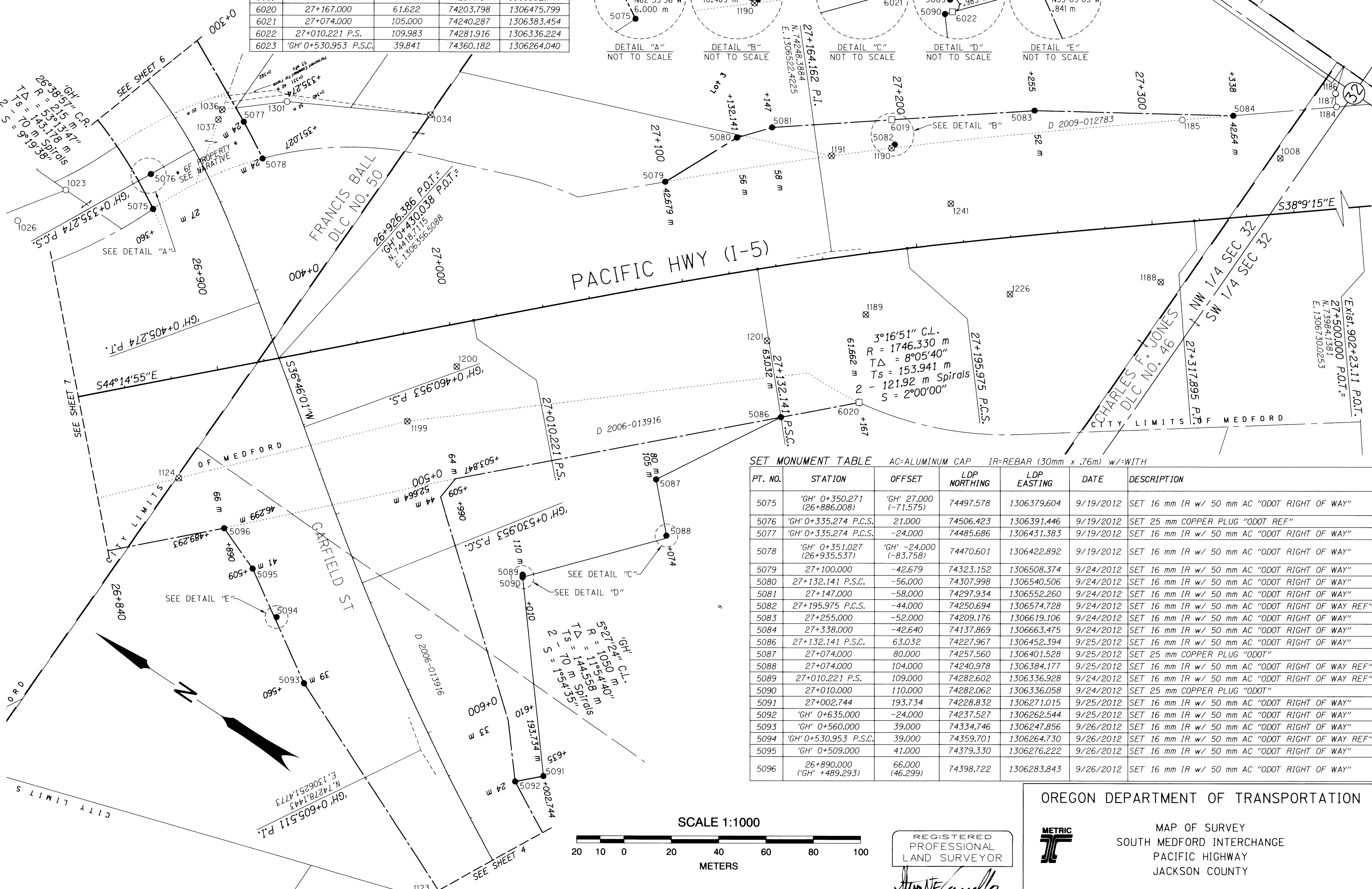
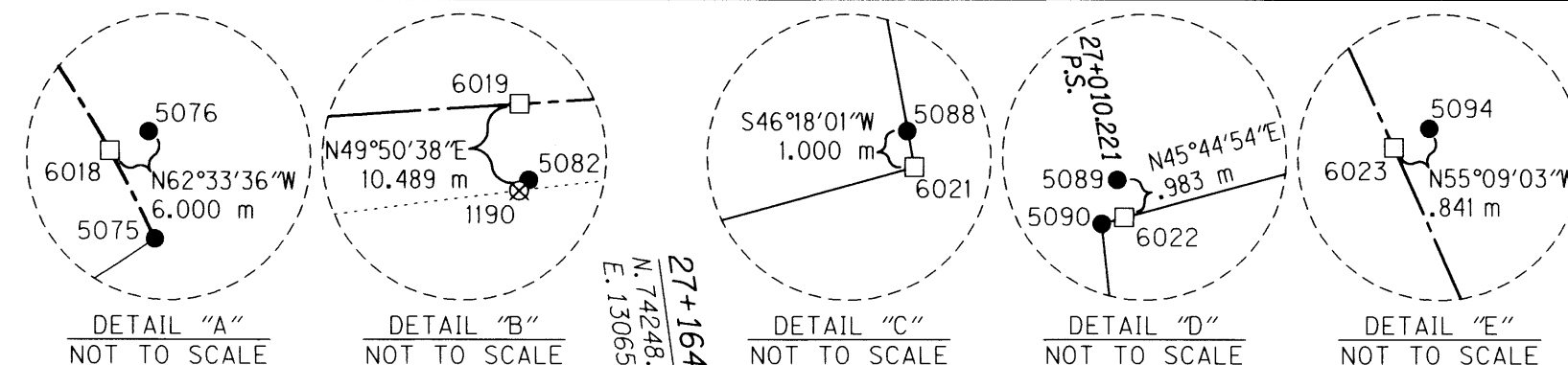
REGISTERED PROFESSIONAL LAND SURVEYOR
STUART E. CAPPELLO
52908LS
EXPIRES: DEC. 31, 2013

OREGON DEPARTMENT OF TRANSPORTATION
MAP OF SURVEY
SOUTH MEDFORD INTERCHANGE
PACIFIC HIGHWAY
JACKSON COUNTY
REGION 3 TECH CENTER
100 ANTELOPE ROAD
WHITE CITY, OREGON, 97503
APRIL, 2013
KEY NO. 10964 SHEET 6 OF 9
DESIGNED BY: ODOT GEOMETRONICS DRAFTED BY: MIKE CHACON CHK'D BY: ANDY AUSLAND

NW 1/4 SEC 32 T37S R1W WM
 SW 1/4 SEC 32 T37S R1W WM

CALCULATED POINTS

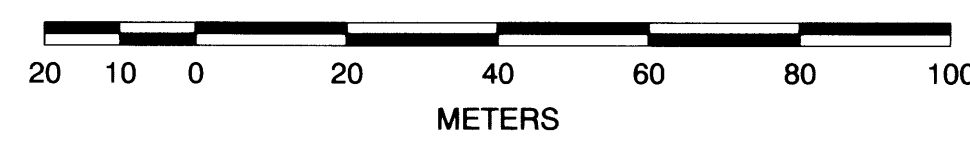
PT. NO.	STATION	OFFSET	LDP NORTHING	LDP EASTING
6018	'GH' 0+335.274 P.C.S.	27.000	74509.188	1306386.121
6019	27+195.975 P.C.S.	-54.489	74257.457	1306582.744
6020	27+167.000	61.622	74203.798	1306475.799
6021	27+074.000	105.000	74240.287	1306383.454
6022	27+010.221 P.S.	109.983	74281.916	1306336.224
6023	'GH' 0+530.953 P.S.C.	39.841	74360.182	1306264.040



SET MONUMENT TABLE

PT. NO.	STATION	OFFSET	LDP NORTHING	LDP EASTING	DATE	DESCRIPTION
5075	'GH' 0+350.271 (26+886.008)	'GH' 27.000 (-71.575)	74497.578	1306379.604	9/19/2012	SET 16 mm IR w/ 50 mm AC "ODOT RIGHT OF WAY"
5076	'GH' 0+335.274 P.C.S.	21.000	74506.423	1306391.446	9/19/2012	SET 25 mm COPPER PLUG "ODOT REF"
5077	'GH' 0+335.274 P.C.S.	-24.000	74485.686	1306431.383	9/19/2012	SET 16 mm IR w/ 50 mm AC "ODOT RIGHT OF WAY"
5078	'GH' 0+351.027 (26+935.537)	'GH' -24.000 (-83.758)	74470.601	1306422.892	9/19/2012	SET 16 mm IR w/ 50 mm AC "ODOT RIGHT OF WAY"
5079	27+100.000	-42.679	74323.152	1306508.374	9/24/2012	SET 16 mm IR w/ 50 mm AC "ODOT RIGHT OF WAY"
5080	27+132.141 P.S.C.	-56.000	74307.998	1306540.506	9/24/2012	SET 16 mm IR w/ 50 mm AC "ODOT RIGHT OF WAY"
5081	27+147.000	-58.000	74297.934	1306552.260	9/24/2012	SET 16 mm IR w/ 50 mm AC "ODOT RIGHT OF WAY"
5082	27+195.975 P.C.S.	-44.000	74250.694	1306574.728	9/24/2012	SET 16 mm IR w/ 50 mm AC "ODOT RIGHT OF WAY REF"
5083	27+255.000	-52.000	74209.176	1306619.106	9/24/2012	SET 16 mm IR w/ 50 mm AC "ODOT RIGHT OF WAY"
5084	27+338.000	-42.640	74137.869	1306663.475	9/24/2012	SET 16 mm IR w/ 50 mm AC "ODOT RIGHT OF WAY"
5086	27+132.141 P.S.C.	63.032	74227.967	1306452.394	9/25/2012	SET 16 mm IR w/ 50 mm AC "ODOT RIGHT OF WAY"
5087	27+074.000	80.000	74257.560	1306401.528	9/25/2012	SET 25 mm COPPER PLUG "ODOT"
5088	27+074.000	104.000	74240.978	1306384.177	9/25/2012	SET 16 mm IR w/ 50 mm AC "ODOT RIGHT OF WAY REF"
5089	27+010.221 P.S.	109.000	74282.602	1306336.928	9/24/2012	SET 16 mm IR w/ 50 mm AC "ODOT RIGHT OF WAY REF"
5090	27+010.000	110.000	74282.062	1306336.058	9/24/2012	SET 25 mm COPPER PLUG "ODOT"
5091	27+002.744	193.734	74228.832	1306271.015	9/25/2012	SET 16 mm IR w/ 50 mm AC "ODOT RIGHT OF WAY"
5092	'GH' 0+635.000	-24.000	74237.527	1306262.544	9/25/2012	SET 16 mm IR w/ 50 mm AC "ODOT RIGHT OF WAY"
5093	'GH' 0+560.000	39.000	74334.746	1306247.856	9/26/2012	SET 16 mm IR w/ 50 mm AC "ODOT RIGHT OF WAY"
5094	'GH' 0+530.953 P.S.C.	39.000	74359.701	1306264.730	9/26/2012	SET 16 mm IR w/ 50 mm AC "ODOT RIGHT OF WAY REF"
5095	'GH' 0+509.000	41.000	74379.330	1306276.222	9/26/2012	SET 16 mm IR w/ 50 mm AC "ODOT RIGHT OF WAY"
5096	26+890.000 ('GH' +489.293)	66.000 (46.299)	74398.722	1306283.843	9/26/2012	SET 16 mm IR w/ 50 mm AC "ODOT RIGHT OF WAY"

SCALE 1:1000



RECOVERED MONUMENT TABLE
 SEE SHEET 9

LINE, POINT & ANNOTATION LEGEND
 SEE SHEET 8

REGISTERED PROFESSIONAL LAND SURVEYOR
 JULY 09, 2001
 STUART E. CAPPELLO
 52908LS
 EXPIRES: DEC. 31, 2013

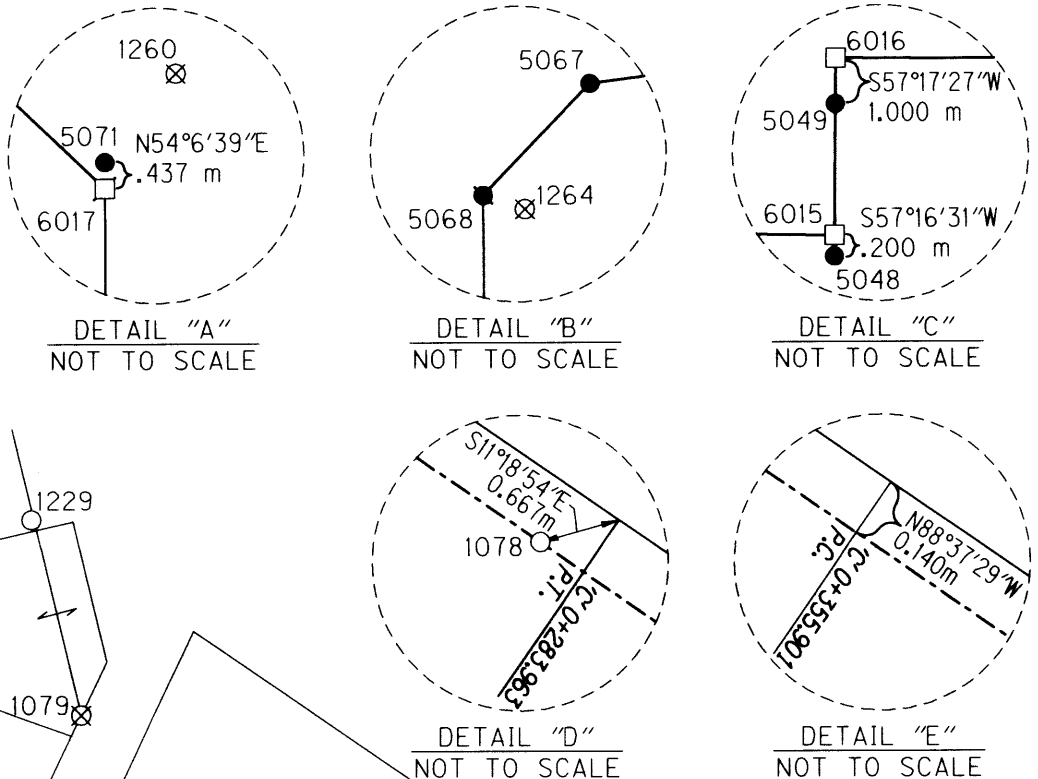
OREGON DEPARTMENT OF TRANSPORTATION

MAP OF SURVEY
 SOUTH MEDFORD INTERCHANGE
 PACIFIC HIGHWAY
 JACKSON COUNTY

REGION 3 TECH CENTER
 100 ANTELOPE ROAD
 WHITE CITY, OREGON, 97503 KEY NO. 10964 SHEET 5 OF 9
 DESIGNED BY: ODOT GEOMETRICS DRAFTED BY: MIKE CHACON CHK'D BY: ANDY AUSLAND

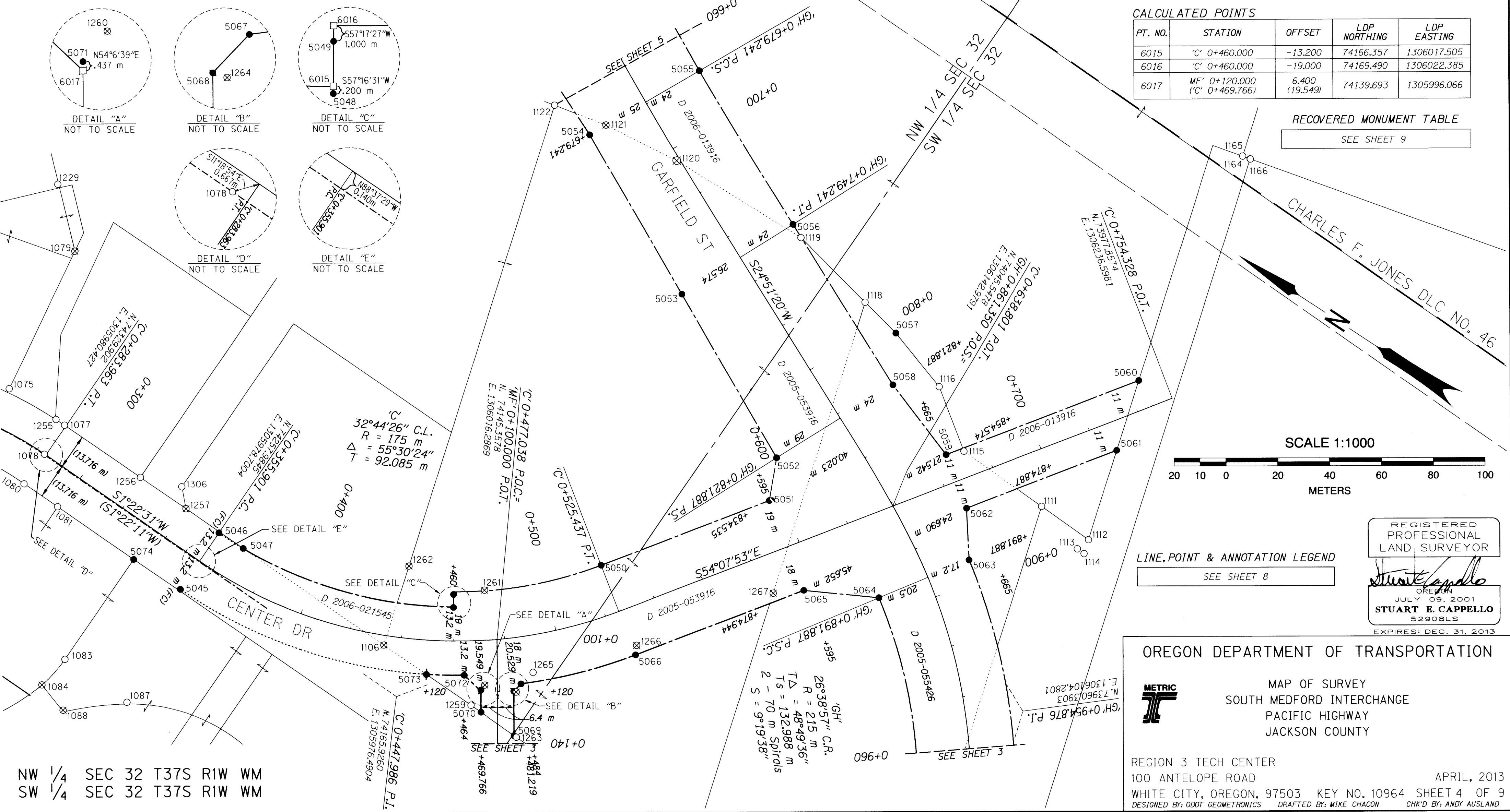
PT. NO.	STATION	OFFSET	LDP NORTHING	LDP EASTING	DATE	DESCRIPTION
5045	'C' 0+355.901 P.C.	13.200	74258.301	1305965.504	10/8/2013	SET 25 mm COPPER PLUG "ODOT REF"
5046	'C' 0+355.901 P.C.	-13.200	74257.668	1305991.897	10/8/2013	SET 16 mm IR w/ 50 mm AC "ODOT RIGHT OF WAY REF"
5047	'C' 0+367.853	-13.200	74246.620	1305992.009	4/16/2013	SET 16 mm IR w/ 50 mm AC "ODOT RIGHT OF WAY REF"
5048	'C' 0+460.000	-13.000	74166.251	1306017.339	10/8/2012	SET 25 mm COPPER PLUG "ODOT REF"
5049	'C' 0+460.000	-18.000	74168.955	1306021.546	10/8/2012	SET 16 mm IR w/ 50 mm AC "ODOT RIGHT OF WAY REF"
5050	'C' 0+525.437 P.T.	-19.000	74127.368	1306062.245	10/8/2012	SET 16 mm IR w/ 50 mm AC "ODOT RIGHT OF WAY"
5051	'C' 0+595.000 ('GH' 0+831.535)	-19.000 (40.023)	74086.609	1306118.617	9/26/2012	SET 16 mm IR w/ 50 mm AC "ODOT RIGHT OF WAY"
5052	'GH' 0+821.887 P.S.	29.000	74093.250	1306133.866	9/26/2012	SET 16 mm IR w/ 50 mm AC "ODOT RIGHT OF WAY"
5053	'GH' 0+749.241 P.T.	26.574	74158.147	1306166.603	9/26/2012	SET 16 mm IR w/ 50 mm AC "ODOT RIGHT OF WAY"
5054	'GH' 0+679.241 P.C.S.	25.000	74221.418	1306198.519	9/26/2012	SET 16 mm IR w/ 50 mm AC "ODOT RIGHT OF WAY"
5055	'GH' 0+679.241 P.C.S.	-24.000	74199.351	1306242.269	4/16/2013	SET 16 mm IR w/ 50 mm AC "ODOT RIGHT OF WAY"
5056	'GH' 0+749.241 P.T.	-24.000	74136.889	1306212.492	9/26/2012	SET 16 mm IR w/ 50 mm AC "ODOT RIGHT OF WAY"
5057	-	-	74080.849	1306199.248	9/26/2012	SET 16 mm IR w/ 50 mm AC "ODOT RESET" (REPLACES 1117)
5058	'GH' 0+821.887 P.S.	-24.000	74070.972	1306181.956	9/26/2012	SET 16 mm IR w/ 50 mm AC "ODOT RIGHT OF WAY"
5059	'C' 0+665.000 ('GH' 0+854.574)	-11.000 (-27.542)	74039.111	1306170.655	9/26/2012	SET 16 mm IR w/ 50 mm AC "ODOT RIGHT OF WAY"
5060	'C' 0+744.727	-11.000	73992.397	1306235.263	10/8/2012	SET 16 mm IR w/ 50 mm AC "ODOT RIGHT OF WAY"

PT. NO.	STATION	OFFSET	LDP NORTHING	LDP EASTING	DATE	DESCRIPTION
5061	'C' 0+727.125	11.000	73984.883	1306208.108	10/8/2012	SET 16 mm IR w/ 50 mm AC "ODOT RIGHT OF WAY"
5062	'C' 0+665.000 ('GH' 0+874.887)	11.000 (-24.690)	74021.283	1306157.765	10/8/2012	SET 16 mm IR w/ 50 mm AC "ODOT RIGHT OF WAY"
5063	'GH' 0+891.887 P.S.C.	-17.200	74009.642	1306141.623	10/8/2012	SET 16 mm IR w/ 50 mm AC "ODOT RIGHT OF WAY"
5064	'GH' 0+891.887 P.S.C.	20.500	74030.823	1306110.435	10/8/2012	SET 16 mm IR w/ 50 mm AC "ODOT RIGHT OF WAY"
5065	'C' 0+595.000 ('GH' 0+874.953)	18.000 (45.659)	74056.625	1306096.938	10/8/2012	SET 16 mm IR w/ 50 mm AC "ODOT RIGHT OF WAY"
5066	'C' 0+525.437 P.T.	18.000	74097.384	1306040.566	10/8/2012	SET 16 mm IR w/ 50 mm AC "ODOT RIGHT OF WAY"
5067	'C' 0+484.000	18.000	74128.275	1306007.034	10/8/2012	SET 16 mm IR w/ 50 mm AC "ODOT RIGHT OF WAY"
5068	'MF' 0+120.000 ('C' 0+481.219)	-6.400 (20.529)	74129.007	1306003.111	10/8/2012	SET 16 mm IR w/ 50 mm AC "ODOT RIGHT OF WAY"
5069	'MF' 0+136.933	-6.400	74119.687	1305988.974	2/19/2013	SET 16 mm IR w/ 50 mm AC "ODOT RIGHT OF WAY"
5070	'MF' 0+128.049	6.400	74135.264	1305989.346	2/19/2013	SET 16 mm IR w/ 50 mm AC "ODOT RIGHT OF WAY"
5071	'MF' 0+119.563 ('C' 0+469.766)	6.419 (19.112)	74139.950	1305996.421	10/8/2012	SET 16 mm IR w/ 50 mm AC "ODOT RIGHT OF WAY REF"
5072	'C' 0+464.000	13.200	74148.499	1305997.656	10/8/2012	SET 25 mm COPPER PLUG "ODOT"
5073	'C' 0+450.413	13.200	74160.915	1305989.960	4/16/2013	SET 25 mm COPPER PLUG "ODOT"
5074	'C' 0+334.539	13.856	74279.673	1305965.361	10/8/2012	SET 16 mm IR w/ 50 mm AC "ODOT RESET" (REPLACES 1082)



PT. NO.	STATION	OFFSET	LDP NORTHING	LDP EASTING
6015	'C' 0+460.000	-13.200	74166.357	1306017.505
6016	'C' 0+460.000	-19.000	74169.490	1306022.385
6017	'MF' 0+120.000 ('C' 0+469.766)	6.400 (19.549)	74139.693	1305996.066

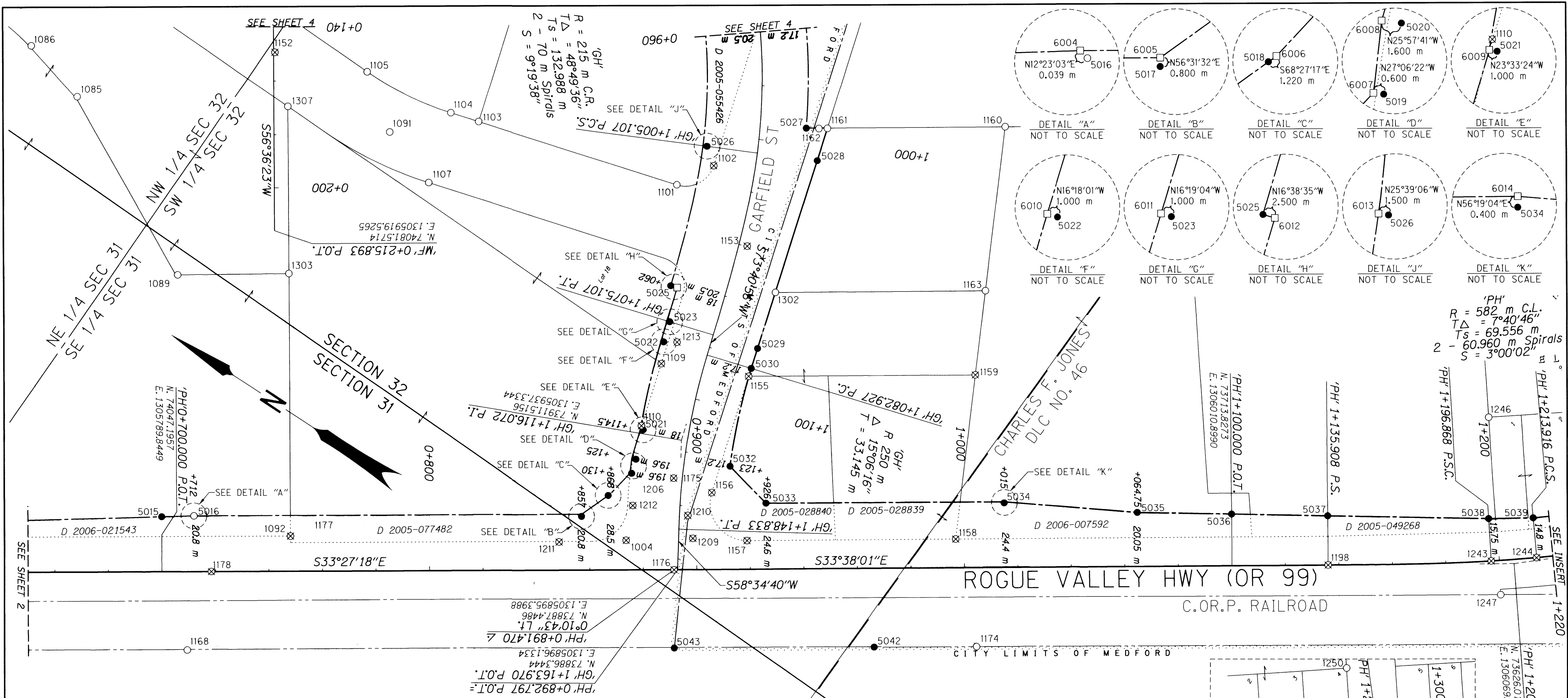
RECOVERED MONUMENT TABLE
SEE SHEET 9



REGISTERED PROFESSIONAL LAND SURVEYOR
Stuart E. Cappello
JULY 09, 2001
STUART E. CAPPELLO
52908LS
EXPIRES: DEC. 31, 2013

OREGON DEPARTMENT OF TRANSPORTATION
METRIC
MAP OF SURVEY
SOUTH MEDFORD INTERCHANGE
PACIFIC HIGHWAY
JACKSON COUNTY

REGION 3 TECH CENTER
100 ANTELOPE ROAD
WHITE CITY, OREGON, 97503
DESIGNED BY: ODOT GEOMETRICS
DRAFTED BY: MIKE CHACON
CHK'D BY: ANDY AUSLAND
APRIL, 2013
KEY NO. 10964 SHEET 4 OF 9



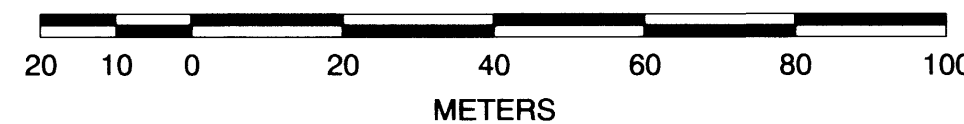
SET MONUMENT TABLE AC=ALUMINUM CAP IR=REBAR (30mm x .76m) w/=WITH

PT. NO.	STATION	OFFSET	LDP NORTHING	LDP EASTING	DATE	DESCRIPTION
5015	'PH' 0+700.00 P.O.T.	-20.529	74058.512	1305806.973	10/9/2012	SET 16 mm IR w/ 50 mm AC "ODOT RIGHT OF WAY"
5016	'PH' 0+712.027	-20.772	74048.611	1305813.806	10/9/2012	FD 16 mm IR w/ YPC "HOFFBUHR & ASSOC INC"
5017	'PH' 0+857.000	-20.000	73927.232	1305893.083	10/9/2012	SET 25 mm COPPER PLUG "ODOT REF"
5018	'PH' 0+867.000	-27.800	73923.189	1305905.104	10/9/2012	SET 16 mm IR w/ 50 mm AC "ODOT RIGHT OF WAY REF"
5019	'GH' 1+130.000	19.000	73920.353	1305916.818	10/9/2012	SET 16 mm IR w/ 50 mm AC "ODOT RIGHT OF WAY REF"
5020	'GH' 1+125.000	18.000	73921.857	1305922.069	10/9/2012	SET 25 mm COPPER PLUG "ODOT REF"
5021	'GH' 1+114.500	17.000	73925.654	1305932.689	10/9/2012	SET 25 mm COPPER PLUG "ODOT REF"
5022	'GH' 1+082.927 P.C.	17.000	73937.143	1305964.368	10/8/2012	SET 25 mm COPPER PLUG "ODOT REF"
5023	'GH' 1+075.107 P.T.	17.000	73939.341	1305971.873	10/8/2012	SET 25 mm COPPER PLUG "ODOT REF"
5025	'GH' 1+062.000	20.500	73946.373	1305983.349	10/8/2012	SET 16 mm IR w/ 50 mm AC "ODOT RIGHT OF WAY"
5026	'GH' 1+005.107 P.C.S.	19.000	73963.408	1306034.363	10/8/2012	SET 25 mm COPPER PLUG "ODOT REF"
5027	'GH' 0+994.437	-17.200	73936.017	1306060.291	10/8/2012	SET 16 mm IR w/ 50 mm AC "ODOT RIGHT OF WAY"
5028	'GH' 1+005.107 P.C.S.	-22.533	73925.966	1306052.338	10/9/2012	SET 16 mm IR w/ 50 mm AC "ODOT RIGHT OF WAY"
5029	'GH' 1+075.107 P.T.	-17.304	73906.419	1305981.511	10/8/2012	SET 16 mm IR w/ 50 mm AC "ODOT RIGHT OF WAY"
5030	'GH' 1+082.927 P.C.	-17.200	73904.321	1305973.977	10/8/2012	SET 16 mm IR w/ 50 mm AC "ODOT RIGHT OF WAY"
5032	'GH' 1+123.000	-17.200	73891.017	1305939.156	10/9/2012	SET 16 mm IR w/ 50 mm AC "ODOT RIGHT OF WAY"
5033	'PH' 1+026.000	-24.600	73872.323	1305935.007	10/9/2012	SET 16 mm IR w/ 50 mm AC "ODOT RIGHT OF WAY"
5034	'PH' 1+015.000	-24.000	73797.890	1305983.803	10/9/2012	SET 25 mm COPPER PLUG "ODOT REF"
5035	'PH' 1+064.750	-20.050	73754.281	1306008.070	10/9/2012	SET 16 mm IR w/ 50 mm AC "ODOT RIGHT OF WAY"
5036	'PH' 1+100.000 P.O.T.	-19.175	73724.447	1306026.866	10/9/2012	SET 25 mm COPPER PLUG "ODOT"
5037	'PH' 1+135.908 P.S.	-18.284	73694.058	1306046.012	10/9/2012	SET 16 mm IR w/ 50 mm AC "ODOT RIGHT OF WAY"
5038	'PH' 1+196.868 P.S.C.	-15.750	73643.176	1306078.070	10/9/2012	SET 16 mm IR w/ 50 mm AC "ODOT RIGHT OF WAY"
5039	'PH' 1+213.916 P.C.S.	-14.800	73629.424	1306087.415	10/9/2012	SET 25 mm COPPER PLUG "ODOT"
5040	'PH' 1+260.000	-13.500	73593.835	1306115.595	10/9/2012	SET 16 mm IR w/ 50 mm AC "ODOT RIGHT OF WAY"
5041	'PH' 1+264.269	-16.800	73592.812	1306120.874	10/9/2012	SET 16 mm IR w/ 50 mm AC "ODOT RIGHT OF WAY"
5042	'PH' 0+966.025	29.283	73809.154	1305912.313	10/9/2012	SET 16 mm IR w/ 50 mm AC "ODOT RESET" (REPLACES 1173)
5043	'PH' 0+891.420	29.151	73871.419	1305871.051	10/9/2012	SET 16 mm IR w/ 50 mm AC "ODOT RESET" (REPLACES 1172)

CALCULATED POINTS

PT. NO.	STATION	OFFSET	LDP NORTHING	LDP EASTING
6004	'PH' 0+712.000	-20.800	74048.649	1305813.815
6005	'PH' 0+857.000	-20.800	73927.673	1305893.751
6006	'PH' 0+868.000	-28.500	73922.741	1305906.239
6007	'GH' 1+130.000	19.600	73920.887	1305916.545
6008	'GH' 1+125.000	19.600	73923.295	1305921.369
6009	'GH' 1+114.500	18.000	73926.570	1305932.290
6010	'GH' 1+082.927 P.C.	18.000	73938.103	1305964.087
6011	'GH' 1+075.107 P.T.	18.000	73940.300	1305971.592
6012	'GH' 1+062.000	18.000	73943.978	1305984.065
6013	'GH' 1+005.107 P.C.S.	20.500	73964.760	1306033.714
6014	'PH' 1+015.000	-24.400	73798.112	1305984.136

SCALE 1:1000



RECOVERED MONUMENT TABLE

SEE SHEET 8

LINE, POINT & ANNOTATION LEGEND

SEE SHEET 8

REGISTERED PROFESSIONAL LAND SURVEYOR

STUART E. CAPPELLO
JULY 09, 2001
52908LS
EXPIRES: DEC. 31, 2013

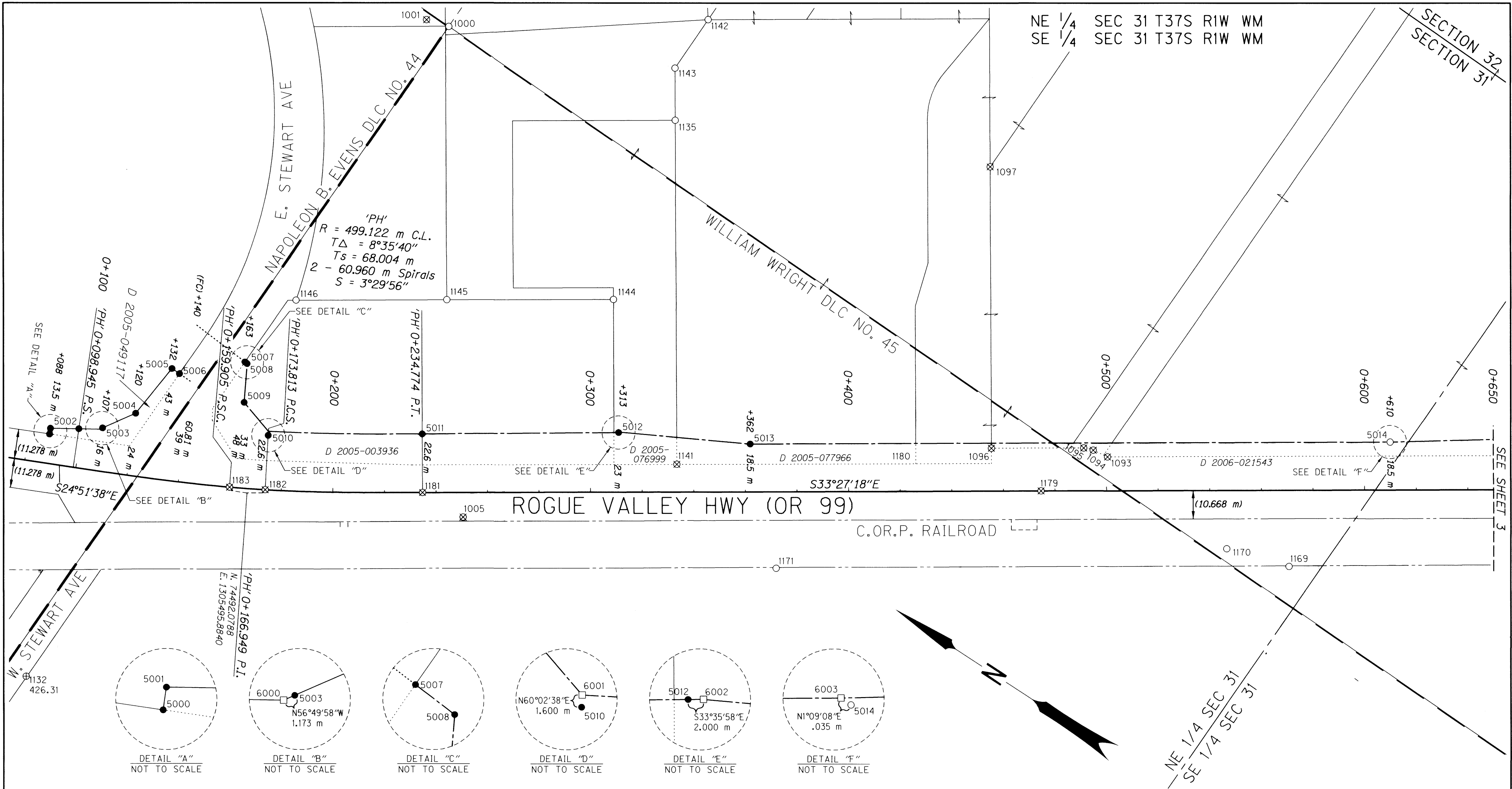
SE 1/4 SEC 31 T37S R1W WM
NW 1/4 SEC 32 T37S R1W WM
SW 1/4 SEC 32 T37S R1W WM

OREGON DEPARTMENT OF TRANSPORTATION

MAP OF SURVEY
SOUTH MEDFORD INTERCHANGE
PACIFIC HIGHWAY
JACKSON COUNTY

REGION 3 TECH CENTER
100 ANTELOPE ROAD
WHITE CITY, OREGON, 97503
DESIGNED BY: ODOT GEOMETRICS DRAFTED BY: MIKE CHACON CHK'D BY: ANDY AUSLAND

APRIL, 2013
KEY NO. 10964 SHEET 3 OF 9

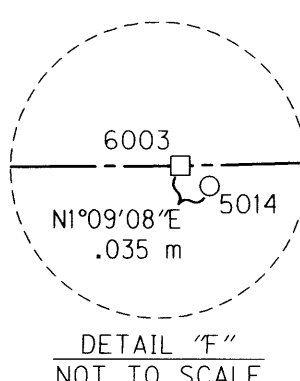
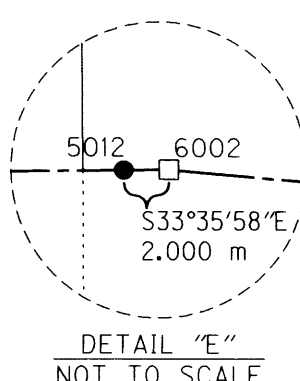
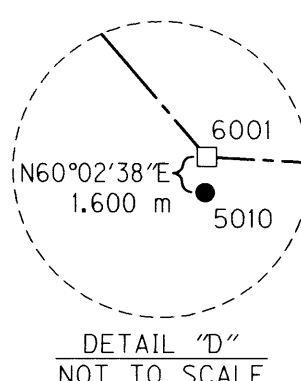
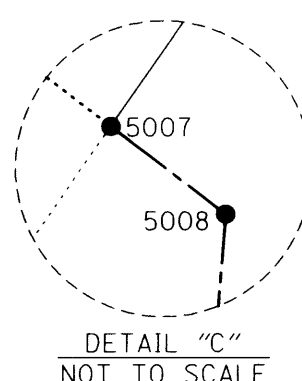
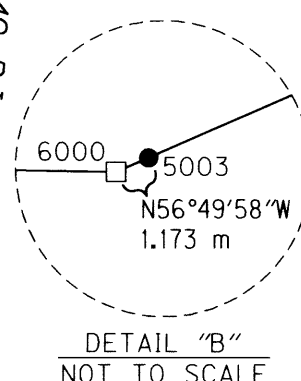
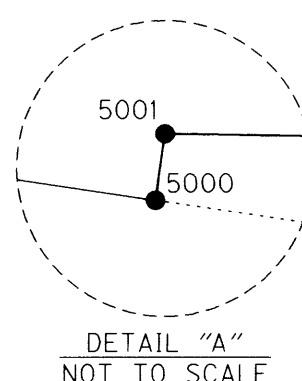


NE 1/4 SEC 31 T37S R1W WM
SE 1/4 SEC 31 T37S R1W WM

SECTION 32
SECTION 31

SEE SHEET 3

NE 1/4 SEC 31
SE 1/4 SEC 31



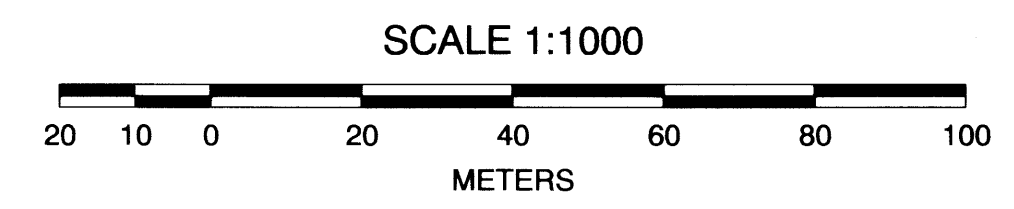
PT. NO.	STATION	OFFSET	LDP NORTHING	LDP EASTING	DATE	DESCRIPTION
5000	'PH' 0+088.000	-11.278	74568.453	1305472.925	10/10/2012	SET 25 mm COPPER PLUG "ODOT"
5001	'PH' 0+088.000	-13.500	74569.387	1305474.942	10/10/2012	SET 16 mm IR w/ 50 mm AC "ODOT RIGHT OF WAY"
5002	'PH' 0+098.945 P.S.	-14.943	74560.064	1305480.852	10/10/2012	SET 16 mm IR w/ 50 mm AC "ODOT RIGHT OF WAY"
5003	'PH' 0+108.000	-16.620	74552.574	1305486.175	10/10/2012	SET 25 mm COPPER PLUG "ODOT REF"
5004	'PH' 0+120.000	-24.000	74544.947	1305497.894	10/10/2012	SET 16 mm IR w/ 50 mm AC "ODOT RIGHT OF WAY"
5005	'PH' 0+132.000	-43.000	74542.648	1305520.055	10/10/2012	SET 16 mm IR w/ 50 mm AC "ODOT RIGHT OF WAY"
5006	'PH' 0+135.298	-41.359	74539.107	1305519.956	10/10/2012	SET 16 mm IR w/ 50 mm AC "ODOT RIGHT OF WAY"
5007	'PH' 0+162.012	-48.573	74520.413	1305537.689	10/10/2012	SET 25 mm COPPER PLUG "ODOT"
5008	'PH' 0+163.000	-48.000	74519.355	1305537.614	10/10/2012	SET 16 mm IR w/ 50 mm AC "ODOT RIGHT OF WAY"
5009	'PH' 0+163.000	-33.000	74512.148	1305524.459	10/10/2012	SET 16 mm IR w/ 50 mm AC "ODOT RIGHT OF WAY"
5010	'PH' 0+173.813 P.C.S.	-21.000	74497.353	1305519.010	10/10/2012	SET 25 mm COPPER PLUG "ODOT REF"
5011	'PH' 0+234.774 P.T.	-22.600	74447.800	1305552.230	10/10/2012	SET 16 mm IR w/ 50 mm AC "ODOT RIGHT OF WAY"
5012	'PH' 0+311.000	-23.000	74384.423	1305594.586	10/10/2012	SET 16 mm IR w/ 50 mm AC "ODOT RIGHT OF WAY REF"
5013	'PH' 0+362.000	-18.500	74339.393	1305618.947	10/10/2012	SET 16 mm IR w/ 50 mm AC "ODOT RIGHT OF WAY"
5014	'PH' 0+610.028	-18.480	74132.447	1305755.664	10/9/2012	FD 16 mm IR w/ YPC "HOFFBUHR & ASSOC INC"

PT. NO.	STATION	OFFSET	LDP NORTHING	LDP EASTING
6000	'PH' 0+107.000	-16.000	74553.216	1305485.194
6001	'PH' 0+173.813 P.C.S.	-22.600	74498.152	1305520.396
6002	'PH' 0+313.000	-23.000	74382.755	1305595.688
6003	'PH' 0+610.000	-18.500	74132.482	1305755.665

RECOVERED MONUMENT TABLE
SEE SHEET 8

LINE, POINT & ANNOTATION LEGEND
SEE SHEET 8

REGISTERED PROFESSIONAL LAND SURVEYOR
Stuart E. Cappello
OREGON JULY 09, 2001
STUART E. CAPPELLO
52908LS
EXPIRES: DEC. 31, 2013



OREGON DEPARTMENT OF TRANSPORTATION

METRIC

MAP OF SURVEY
SOUTH MEDFORD INTERCHANGE
PACIFIC HIGHWAY
JACKSON COUNTY

REGION 3 TECH CENTER
100 ANTELOPE ROAD
WHITE CITY, OREGON, 97503
DESIGNED BY: ODOT GEOMETRICS DRAFTED BY: MIKE CHAGON CHK'D BY: ANDY AUSLAND

APRIL, 2013
KEY NO. 10964 SHEET 2 OF 9