



PARTITION PLAT No. P-07-2013  
 LOCATED IN THE EAST 1/2 OF SECTION 8 TOWNSHIP 35 SOUTH RANGE 3 EAST W. M., AND THE NW 1/4 OF THE SW 1/4, AND THE SW 1/4 OF THE NW 1/4 OF SECTION 9 TOWNSHIP 35 SOUTH RANGE 3 EAST W. M.  
 SURVEYED FOR: JUNIPER PROPERTIES LIMITED PARTNERSHIP LLC  
 MANAGED BY: LONE ROCK TIMBER MANAGEMENT COMPANY  
 SURVEYED BY: LONE ROCK TIMBER MANAGEMENT COMPANY  
 SURVEY IN JACKSON COUNTY OREGON DATE: SEPTEMBER 2012

LONE ROCK TIMBER MANAGEMENT COMPANY  
 P.O. BOX 1127 ROSEBURG, OR 97470  
 TRACT: RANCHERIA

CORNER INFORMATION:

- 1) THE NORTHEAST SECTION CORNER FOR SECTION 8  
 FOUND 1962 BLM CAP 1.0 FEET ABOVE GROUND  
 -- 20" FIR BEARS S64 3/4"W 58.7 FEET (RECORD S65"W 45.5 FEET) HEALED DOUBLE BLAZES AND TAG  
 -- 19" FIR BEARS N20 1/2"W 30.1 FEET (RECORD N21"W 30.4 FEET) HEALED DOUBLE BLAZES AND TAG  
 -- 7" FIR BEARS N69"E 9.1 FEET (RECORD N68"E 9.0 FEET) HEALED DOUBLE BLAZES AND TAG  
 -- 13" FIR BEARS S70 1/2"E 16.7 FEET (RECORD S70"E 16.6 FEET) HEALED DOUBLE BLAZES AND TAG  
 -- 20" FIR STUMP BEARS N13"E 83.2 FEET AS PER RECORD COULD NOT MEASURE  
 CORNER LIES ON FLAT GROUND APPROX. 200 FEET WEST OF ROCK ROAD
- 2) PROPERTY CORNER  
 SET IRON ROD 0.2 FEET ABOVE GROUND  
 -- 20" DOUGLAS FIR BEARS N17 1/2"W 17.3 FEET WE SCRIBE BT AND TAG  
 CORNER LIES IN MIDDLE OF OLD RAILROAD GRADE THAT HAS BEEN SUB-SOILED. PUT METAL FENCE POST APPROX. 1.0 FEET SOUTH OF CORNER
- 3) PROPERTY CORNER  
 SET IRON ROD 0.3 FEET ABOVE GROUND  
 -- 13" WHITE FIR BEARS S83"E 9.0 FEET SCRIBE BT AND TAG  
 CORNER LIES ON NORTHERLY RIGHT OF WAY OF RANCHERIA COUNTY ROAD. PUT METAL FENCE POST APPROX. 1.0 FEET NORTH OF CORNER
- 4) PROPERTY CORNER  
 SET IRON ROD 0.2 FEET ABOVE GROUND  
 -- 20" PINE BEARS S79 3/4"E 14.6 FEET WE SCRIBE BT AND TAG  
 CORNER LIES ON NORTHERLY RIGHT OF WAY OF RANCHERIA COUNTY ROAD. PUT METAL FENCE POST APPROX. 1.0 FEET NORTH OF CORNER
- 5) PROPERTY CORNER  
 SET IRON ROD 0.2 FEET ABOVE GROUND ON SECTION LINE  
 -- 6" DOUGLAS FIR BEARS S46 3/4"E 38.9 FEET WE SCRIBE BT AND TAG  
 CORNER LIES ON THE SOUTHERLY RIGHT OF WAY OF RANCHERIA COUNTY ROAD. PUT METAL FENCE POST APPROX. 1.0 FEET NORTH OF CORNER
- 6) THE SOUTHEAST SECTION CORNER FOR SECTION 8  
 FOUND 1986 COUNTY CAP 0.2 FEET ABOVE GROUND  
 -- 23" FIR STUMP BEARS S60"W 37.0 FEET (RECORD S60"W 37.0 FEET) HEALED DOUBLE BLAZES AND TAG  
 -- 25" FIR BEARS N54"W 26.8 FEET (RECORD N54 3/4"W 27.0 FEET) HEALED DOUBLE BLAZES AND TAG  
 -- 18" PINE BEARS N62 1/2"E 41.7 FEET (RECORD N62"E 41.7 FEET) HEALED DOUBLE BLAZES AND TAG  
 -- 11" FIR BEARS N6 1/4"W 4.4 FEET NO RECORD LOCATION TAG ON TREE READS SOUTH 3.0 FEET TO CORNER  
 CORNER LIES ON FLAT GROUND AT INTERSECTION OF NORTH AND WEST BLAZED LINES
- 7) THE QUARTER CORNER BETWEEN SECTIONS 8 AND 17  
 FOUND RAMBO CORNER PER 1986 SURVEY 10450  
 -- 11" CEDAR BEARS N49 3/4"E 8.2 FEET (RECORD N49"38'E 7.9 FEET) HEALED FACE AND TAG  
 -- 11" FIR BEARS S27 1/4"W 22.9 FEET (RECORD S27"11'W 23.2 FEET) HEALED FACE AND TAG  
 CORNER LIES ON FLAT GROUND AND IS 0.8 FEET ABOVE GROUND
- 8) PROPERTY CORNER  
 SET IRON ROD 0.3 FEET ABOVE GROUND  
 -- 16" PINE BEARS S16 1/2"E 15.1 FEET WE SCRIBE BT AND TAG  
 CORNER LIES ON SOUTHERLY RIGHT OF WAY OF RANCHERIA COUNTY ROAD. PUT METAL FENCE POST APPROX. 1.0 FEET NORTH OF CORNER
- 9) PROPERTY CORNER  
 SET IRON ROD 0.2 FEET ABOVE GROUND  
 -- 17" PINE BEARS S8 1/4"E 23.5 FEET WE SCRIBE BT AND TAG  
 CORNER LIES ON SOUTHERLY RIGHT OF WAY OF RANCHERIA COUNTY ROAD. PUT METAL FENCE POST APPROX. 1.0 FEET NORTH OF CORNER
- 10) PROPERTY CORNER  
 SET IRON ROD 0.3 FEET ABOVE GROUND  
 -- 13" PINE BEARS S80 1/4"E 20.5 FEET WE SCRIBE BT AND TAG  
 CORNER LIES ON NORTHERLY RIGHT OF WAY OF RANCHERIA COUNTY ROAD PUT METAL FENCE POST APPROX. 1.0 FEET NORTH OF CORNER
- 11) PROPERTY CORNER  
 SET IRON ROD 0.2 FEET ABOVE GROUND  
 -- 13" DOUGLAS FIR BEARS S76"W 23.1 FEET WE SCRIBE BT AND TAG  
 CORNER LIES IN MIDDLE OF OLD RAILROAD GRADE THAT HAS BEEN SUB-SOILED. PUT METAL FENCE POST APPROX. 1.0 FEET SOUTH OF CORNER
- 12) PROPERTY CORNER  
 SET IRON ROD 0.3 FEET ABOVE GROUND  
 -- 13" PINE BEARS S21 1/4"W 18.7 FEET WE SCRIBE BT AND TAG  
 CORNER LIES IN MIDDLE OF OLD RAILROAD GRADE THAT HAS BEEN SUB-SOILED. PUT METAL FENCE POST APPROX. 1.0 FEET EASTERLY OF CORNER
- 13) PROPERTY CORNER  
 SET IRON ROD 0.3 FEET ABOVE GROUND  
 -- 11" CEDAR BEARS S10 3/4"W 13.7 FEET WE SCRIBE BT AND TAG  
 CORNER LIES IN MIDDLE OF OLD RAILROAD GRADE THAT HAS BEEN SUB-SOILED. PUT METAL FENCE POST APPROX. 1.0 FEET EASTERLY OF CORNER
- 14) PROPERTY CORNER  
 SET IRON ROD 0.3 FEET ABOVE GROUND  
 -- 16" PINE BEARS N39"W 19.1 FEET WE SCRIBE BT AND TAG  
 CORNER LIES IN MIDDLE OF RAILROAD GRADE THAT HAS BEEN SUB-SOILED. PUT METAL FENCE POST APPROX. 1.0 FEET EAST OF CORNER
- 15) PROPERTY CORNER  
 SET IRON ROD 0.6 FEET ABOVE GROUND  
 -- 11" DOUGLAS FIR BEARS S53 3/4"E 26.1 FEET WE SCRIBE BT AND TAG  
 CORNER LIES IN MIDDLE OF OLD RAILROAD GRADE THAT HAS BEEN SUB-SOILED PUT METAL FENCE POST APPROX. 1.0 FEET WESTERLY OF CORNER.

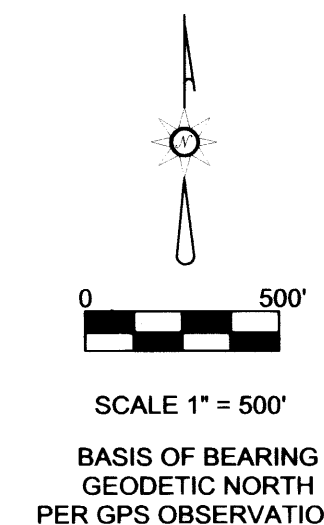
I HEREBY CERTIFY THAT THIS IS A PHOTOCOPY OF THE ORIGINAL PLAT

*Ken W. Hoffine*

NARRATIVE:

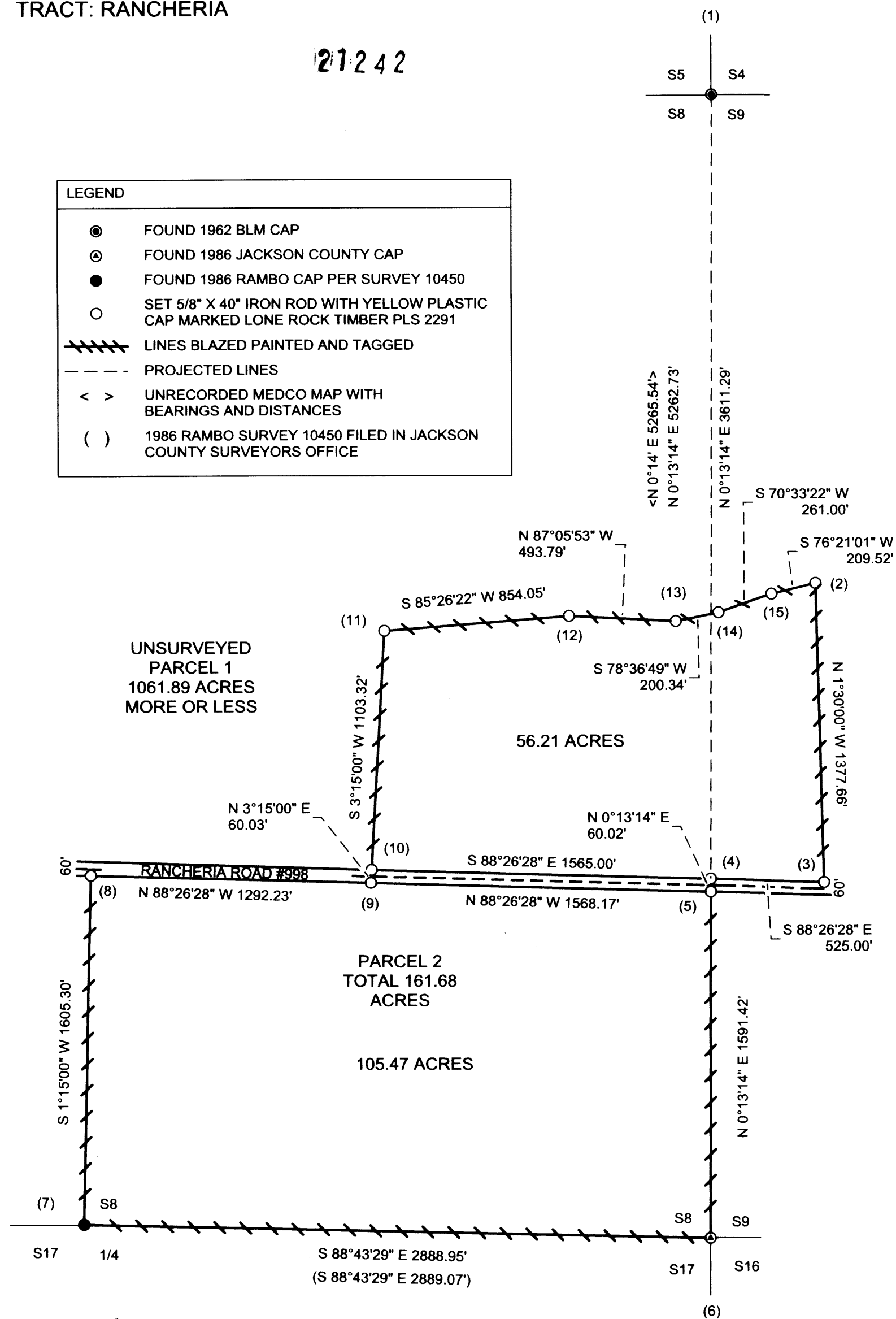
THE PURPOSE OF THIS SURVEY IS TO SET CORNER MONUMENTS AND MARK LINES FOR TIMBER MANAGEMENT PURPOSES BY PARTITIONING A 160 ACRE PARCEL OF TIMBERLAND FROM A 1,224 ACRE PARCEL OF TIMBER LAND. WE INITIATED THIS SURVEY AT THE SOUTHEAST CORNER OF SECTION 8 AND RAN A CLOSED LOOP RANDOM TRAVERSE NEARLY ALONG THE BOUNDARY OF THE 160 ACRE PARCEL. WE ALSO RAN A RANDOM TRAVERSE TO THE NORTHEAST CORNER OF SECTION 8. BOTH THE NORTHEAST AND SOUTHEAST CORNERS OF SECTION 8 WERE REESTABLISHED FROM ORIGINAL EVIDENCE. WE LOOKED FOR AND DID NOT FIND ANY ORIGINAL EVIDENCE TO REESTABLISH THE EAST 1/4 OF SECTION 8. WE ALSO RAN A GPS SURVEY TO ESTABLISH POINTS OF CONTROL NEAR EACH OF THE SECTION CORNERS AND THE SOUTH QUARTER CORNER OF SECTION 8. WE SET THE MONUMENTS AND MARKED LINES WITH RIBBON, BLAZING, PAINTING AND ALUMINUM TAGS ON TREES. THIS SURVEY WAS DONE WITH A NIKON DTM 522 TOTAL STATION WITH TRIMBLE 4000 AND 4400 GPS RECEIVERS.

REGISTERED PROFESSIONAL LAND SURVEYOR  
*Ken W. Hoffine*  
 OREGON  
 JULY 16, 1987  
 KEN W. HOFFINE  
 LICENSE # 2291  
 EXPIRES: JULY 30, 2013



CORNER INFORMATION:

LEGEND	
●	FOUND 1962 BLM CAP
○	FOUND 1986 JACKSON COUNTY CAP
●	FOUND 1986 RAMBO CAP PER SURVEY 10450
○	SET 5/8" X 40" IRON ROD WITH YELLOW PLASTIC CAP MARKED LONE ROCK TIMBER PLS 2291
////	LINES BLAZED PAINTED AND TAGGED
- - -	PROJECTED LINES
< >	UNRECORDED MEDCO MAP WITH BEARINGS AND DISTANCES
( )	1986 RAMBO SURVEY 10450 FILED IN JACKSON COUNTY SURVEYORS OFFICE



RECEIVED  
 Date 4/15/13 By *JE*  
 This survey consists of:  
 2 sheet(s) Map  
 \_\_\_\_\_ page(s) Narrative  
 JACKSON COUNTY SURVEYOR