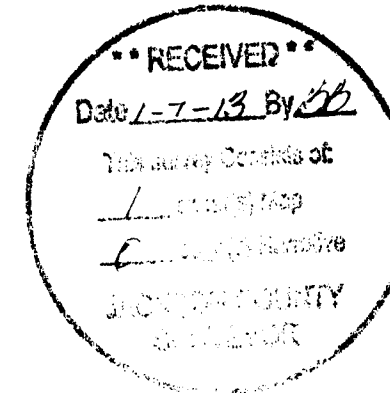


RECORD OF SURVEY

LOCATED IN
SECTION 2, T.33S., R.3W., W.M.
JACKSON COUNTY, OREGON



CORNER DESCRIPTIONS:

ALL NEW BEARING TREES HAVE DOUBLE BLAZED FACES WITH A BRASS WASHER STAMPED "PLS 1941" NAILED INTO THE LOWER BLAZE. BEARINGS ARE TAKEN TO THE CENTER OF THE TREE AT THE ROOT CROWN AND DISTANCES ARE MEASURED TO A NAIL IN THE ROOT CROWN AT THE SIDE AND CENTER OF THE TREE WITH A TOTAL STATION. ALL BEARING TREES HAVE A 6" RED BAND PAINTED AROUND THE TREE AND THE BLAZED FACE PAINTED RED AND BEARING TREE SIGNS NAILED TO THE TREE.

1. **CC S2/S3/S34** GCDB 500678 ORIGINAL CLOSING CORNER
FOUND A 2 1/2" IRON POST BY L. ROSEBERRY IN 1975 PER A USBLM DEPENDENT RESURVEY OF THE SEVENTH STANDARD PARALLEL SOUTH, FIRMLY SET, PROJECTING 6" ABOVE THE GROUND WITH A STANDARD 3 1/4" BRASS CAP PROPERLY MKD. FROM WHICH BEARING TREES MKD BY F. MENSCH IN 1913:
A 45" ROTTED W. FIR STUMP BEARS S.32°15'E., 66.7 FEET WITH SCRIBE MKS "R3W S2" VISIBLE ON ROTTED BLAZE. (S.32°E., 101 LKS.)
A 48" D.FIR BEARS S.57°30'W., 31.2 FEET WITH RE-HEALED DOUBLE BLAZES. (S.57°W., 47 LKS.)
AND A BEARING TREE BY ROSEBERRY:
A 23" W. FIR BEARS S.47°45'E., 60.5 FEET WITH HEALED BLAZE. (S.48°15'E., 91 LKS.)

FOUND MENSCH'S STONE BURIED ON THE SOUTH EDGE OF THE BCIP PROJECTING 4" ABOVE THE GROUND.

2. **1/4 S3/S2** GCDB 500640 ORIGINAL CORNER
FOUND A 1965 BCIP BY J.S. GAWRON PER THE USBLM REMONUMENTATION SURVEY, WITH DESCRIPTION AND ACCESSORIES PER THE 2009 USBLM DEPENDENT RESURVEY AND SUBDIVISION OF SEC 3 BY A. RAMBO.

3. **S2/S3/S10/S11** GCDB 500600 ORIGINAL CORNER
FOUND A 2 1/2" IRON POST BY J.S. GAWRON IN 1965 PER USBLM REMONUMENTATION, FIRMLY SET, PROJECTING 6" ABOVE THE GROUND, WITH A STANDARD 3 1/4" BRASS CAP PROPERLY MKD. FROM WHICH BEARING TREES BY GAWRON:
A 37" D.FIR BEARS N.32°45'E., 23.3 FEET WITH HEALED BLAZE. (N.33°E., 36 LKS.)
A 39" D.FIR BEARS S.33°E., 38.4 FEET WITH HEALED BLAZE. (S.33°E., 58 LKS.)
A 38" D.FIR BEARS S.72°15'W., 59.7 FEET WITH HEALED BLAZE. (S.73°W., 90 LKS.)
A 9" ROTTED CHINQUAPIN SNAG BEARS N.27°30'W., 24.5 FEET WITH BARK SCRIBE VISIBLE. (N.27°W., 37 LKS.)
AND A NEW BEARING TREE:
A 8" D.FIR BEARS N.10°15'W., 46.6 FEET SCRIBED "T33S R3W S3 BT"

4. **1/4 S2/S11** GCDB 540600 PROPORTIONED CORNER
FOUND A 4"X 4"X 22" LONG WOOD POST BY H. HARTLEY PER A 1981 USBLM ADMINISTRATIVE SURVEY. NO ORIGINAL EVIDENCE FOUND, CORNER IS LOST. AT THE PROPORTIONATE POSITION:
SET A 5/8" X 30" IRON ROD, 28" IN THE GROUND WITH A 2" ALUMINUM CAP MARKED:

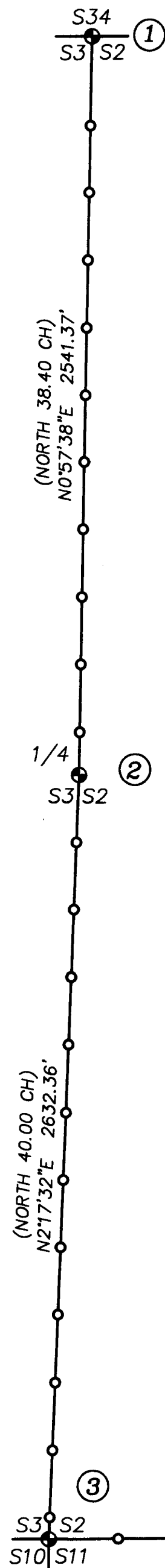
T33S R3W
S2
1/4 S11
2012
PLS 1941

- FROM WHICH BEARING TREES BY HARTLEY IN 1981:
A 15" W.FIR BEARS S.37°30'E., 17.9 FEET WITH HEALED SINGLE BLAZE (S.39°45'E., 18.3 FT)
A 4" SUGARPINE BEARS N.44°W., 60.6 FEET WITH HEALED SINGLE BLAZE (N.43°45'W., 60.6 FT)
FROM WHICH NEW BEARING TREES:
A 8" FIR BEARS N.37°15'E., 16.2 FEET SCRIBED "1/4 S2 BT"
A 10" D.FIR BEARS N.89°E., 13.9 FEET SCRIBED "1/4 S2 BT"
A 11" D.FIR BEARS S.15°W., 8.6 FEET SCRIBED "1/4 S11 BT"

5. **S1/S2/S11/S12** GCDB 600600 ORIGINAL CORNER
FOUND A 1958 USBLM BCIP BY H.THEILSEN WITH DESCRIPTION AND ACCESSORIES PER THE 2010 JCISO CORNER RENEWAL.

S89°47'12"W 2640.67'
[N89°46'15"E 2640.7']

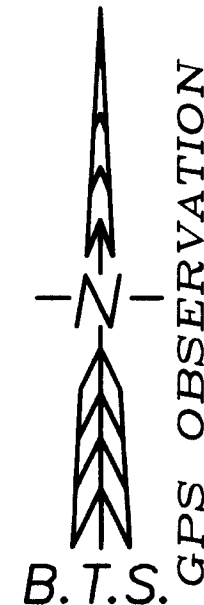
S89°47'12"W 2640.67'
[N89°46'15"E 2640.7']



(WEST 80.75 CH)

NARRATIVE:

THE PURPOSE OF THIS SURVEY IS TO POST AND BLAZE THE WEST AND SOUTH LINES OF SECTION 2, AND TO MONUMENT THE 1/4 CORNER OF SECTIONS 2 & 11. THE NW, SW AND SE SECTION CORNERS OF SECTION 2 AND THE 1/4 CORNER OF SECTIONS 3 & 2 ARE FOUND AS REMONUMENTED IN THEIR ORIGINAL POSITIONS BY THE USBLM UNDER THE 1958 DEPENDENT RESURVEY BY HANS THEILSEN, THE 1965 REMONUMENTATION SURVEY BY JOSEPH GAWRON & THE 1975 DEPENDENT RESURVEY BY LYNN ROSEBERRY. A 1981 USBLM ADMINISTRATIVE SURVEY BY H. HARTLEY PROPORTIONATELY SET THE 1/4 CORNER OF SECTIONS 2 & 11 AND BLAZED & TAGGED THE SECTION LINE. AFTER DILIGENT SEARCH NO ORIGINAL EVIDENCE WAS FOUND ON THE NUMEROUS STUMPS IN THE 1/4 CORNER LOCATION. THE CORNER IS LOST AND IS RESTORED AT PROPORTIONATE DISTANCE PER THE USBLM MANUAL OF SURVEYING INSTRUCTIONS, 2009 AND THE LAWS OF THE STATE OF OREGON. THE PROPORTIONATE CORNER POSITION FALLS DIRECTLY IN THE HOLE OF THE ROTTED 1981 WOOD POST. I POST, BLAZE AND PAINT THE SOUTH AND WEST LINES OF SECTION 2 BETWEEN THE CORNER POSITIONS AS DESCRIBED. THIS SURVEY WAS PERFORMED BY KRIS DEGROOT, ADAM DEGROOT & LESTER FANNING USING LEICA SYSTEM 1200 GPS RECEIVERS AND A LEICA TCPR 1203 TOTAL STATION WITH COMPUTATIONS AND DRAFTING BY ADAM DEGROOT.



SURVEY PROCEDURE:

A STATIC GPS SURVEY WAS PERFORMED TO 4 PROJECT CONTROL POINTS HOLDING THE PUBLISHED POSITIONS OF ODOT ORGN STATIONS GPTS, PSPT & SUSH. THE PROCESSED AND ADJUSTED PROJECT CONTROL POINTS WERE THEN PROJECTED ONTO A LOCAL TRANSVERSE MERCATOR PROJECTION AS FOLLOWS.

REFERENCE DATUM: NAD 83 (CORS96)(EPOCH 2002.0000)
PROJECTION: TRANSVERSE MERCATOR (TM)
LATITUDE OF ORIGIN: 42°43'00"N.
CENTRAL MERIDIAN: 123°01'30"W.
ZONE WIDTH: 2°00'00"
ORIGIN SCALE FACTOR: 1.000155
FALSE NORTHING: 50000.000 fti
FALSE EASTING: 150000.000 fti

CONVENTIONAL TRAVERSE LOOPS WERE RUN ALONG ALL LINES POSTED, AND ADJUSTED IN LEICA GEO OFFICE BY THE METHOD OF LEAST SQUARES.



LEGEND:

- ⊙ = SET 5/8" x 30" IRON ROD w/2" ALUMINUM CAP
- = FOUND USBLM BCIP
- () = 1884 USGLO RECORD BY RUFUS MOORE
- [] = RECORD PER USBLM 1981 ADMINISTRATIVE SURVEY
- = BOUNDARY LINES BLAZED, PAINTED AND POSTED WITH 5 1/2' STEEL POSTS

GCDB 600600
LATITUDE 42°43'24.90924" N.
LONGITUDE 123°00'51.91377" W.
NAD83 (CORS96)(EPOCH 2002.00)