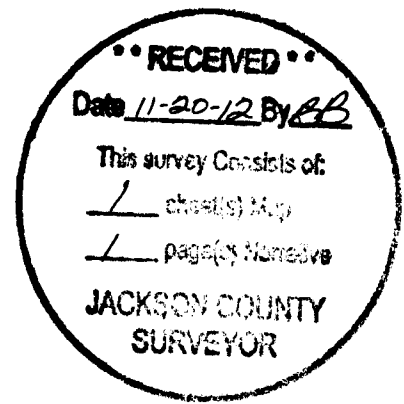


MAP OF SURVEY

LOCATED IN
SECTION 20
TOWNSHIP 33 SOUTH, RANGE 4 WEST,
WILLAMETTE MERIDIAN
JACKSON COUNTY, OREGON



SURVEY BY:
DAREN CONE
LAND SURVEYOR
DBA: DAREN CONE, PE FOREST ENGINEER
P.O. BOX 791
SHADY COVE, OR 97539
(541) 973-4970

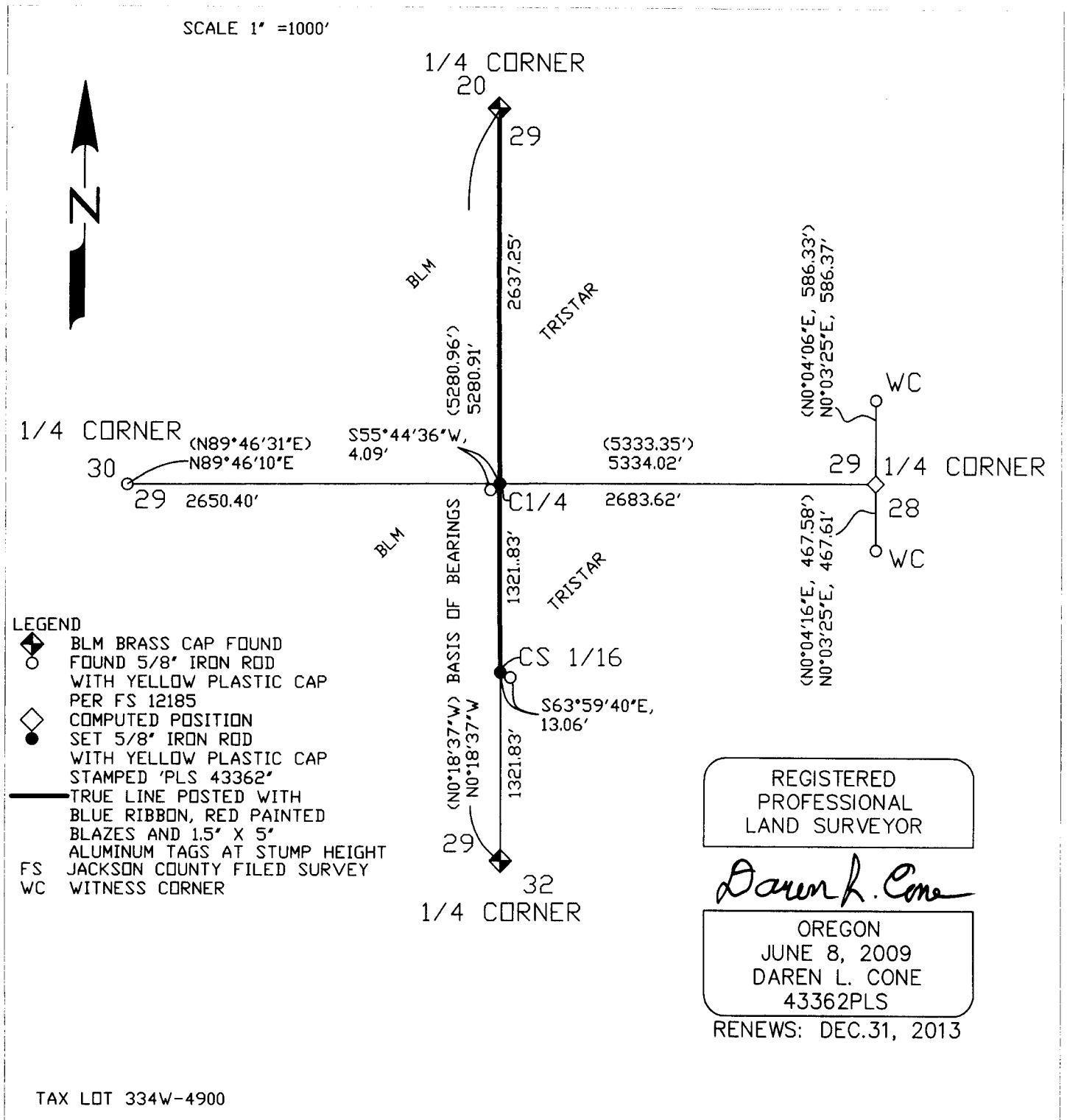
SURVEY FOR:
TRI STAR SOUTHWEST OREGON TIMBERLANDS, LLC
572 PARSONS DRIVE, SUITE 124
MEDFORD, OR 97501

DATE OF SURVEY: OCTOBER 2012

PURPOSE OF SURVEY:

TO LOCATE AND MARK THE NORTH SOUTH CENTERLINE OF SECTION 29 FROM THE CS 1/16TH CORNER TO THE NORTH 1/4 CORNER

SHEET 1 OF 2 PLAT, NARRATIVE ON SHEET 2



21163

MAP OF SURVEY

LOCATED IN
SECTION 20
TOWNSHIP 33 SOUTH, RANGE 4 WEST,
WILLAMETTE MERIDIAN
JACKSON COUNTY, OREGON

SURVEY BY:

DAREN CONE
LAND SURVEYOR
DBA: DAREN CONE, PE FOREST ENGINEER
P.O. BOX 791
SHADY COVE, OR 97539
(541) 973-4970

SURVEY FOR:

TRI STAR SOUTHWEST OREGON TIMBERLANDS, LLC
572 PARSONS DRIVE, SUITE 124
MEDFORD, OR 97501

DATE OF SURVEY: OCTOBER 2012

PURPOSE OF SURVEY:

TO LOCATE AND MARK THE NORTH SOUTH CENTERLINE OF SECTION 29 FROM THE
CS 1/16TH CORNER TO THE NORTH 1/4 CORNER

SHEET 2 OF 2 NARRATIVE, PLAT ON SHEET 1

NARRATIVE

SECTION 29 WAS ORIGINALLY SURVEYED IN 1989 BY EDWARD F. SHARP, U.S. DEPUTY SURVEYOR. THE SOUTH AND NORTH 1/4 CORNERS WERE REMONUMENTED BY JAMES E. JELLY, CADASTRAL SURVEYOR, IN 1962 & 1968-69. JAMES ARTMAN, PLS 2268, SUBDIVIDED SECTION 29 IN 1990, PER JACKSON COUNTY FILED SURVEY 12185. USING A NIKON NPL350 TOTAL STATION I RAN A DOUBLE ANGLE TRAVERSE FROM THE SOUTH 1/4 CORNER TO THE N 1/4 CORNER AND FOUND THAT THE POSITIONS OF THE C 1/4 CORNER AND CS 1/16 CORNER TO BE OUT OF POSITION WITH THE RECORD PER FS 12185. I THEN RAN THE EAST WEST CENTERLINE TO DETERMINE THE TRUE POSITION OF THE C 1/4 CORNER. AFTER CONSULTING WITH JAMES ARTMAN AND THE BLM CADASTRAL SURVEYOR I DETERMINED TO RESET THE C 1/4 AND CS 1/16TH CORNERS PER THE ATTACHED PLAT. I LEFT ARTMAN'S MONUMENTS PER FS 12185 IN PLACE, BUT DROVE THEM APPROXIMATELY 6" BELOW THE SURFACE.

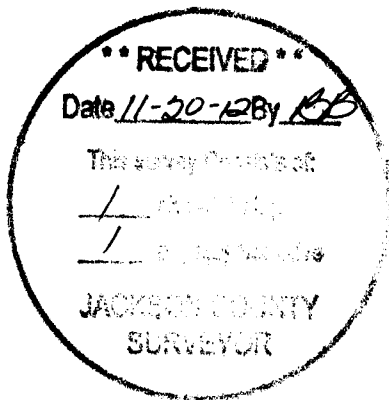
AT THE C 1/4 CORNER I USED THE SAME BEARING TREES WITH NEW YELLOW METAL LOCATION POSTERS:

A SUGAR PINE 34.1' DBH BEARS N65°07'W, 172.2', SCRIBE HEALED OVER
A DOUGLAS-FIR 18.4' DBH BEARS N31°24'W, 121.3', SCRIBE HEALED OVER
A DOUGLAS-FIR 14.8' DBH BEARS S48°20'E 105.3', SCRIBE HEALED OVER
AN INCENSE CEDAR 15.8' DBH BEARS S35°40'W, 41.3', SCRIBE HEALED OVER
CORNER FALLS IN THE NORTHERLY WHEEL TRACK OF SLATE CREEK ROAD AND IS SET APPROXIMATELY 2' BELOW THE SURFACE. 5/8" IRON ROD PER FS 12185 BEARS S55°44'36"W, 4.1 FEET. THIS MONUMENT FALLS IN THE MIDDLE OF SLATE CREEK ROAD AND IS SET APPROXIMATELY 6' BELOW THE SURFACE.

AT THE CS 1/16 CORNER I MARKED NEW BEARING TREES:

A DOUGLAS-FIR 21.5' DBH BEARS N44°12'W, 22.8', SCRIBED "CS 1/16 BT"
A MADRONE 18.5' DBH BEARS N73°25'E, 35.3', SCRIBED "CS 1/16 BT"
5/8" IRON ROD PER FS 12185 BEARS S63°59'40"E, 13.06'. THIS MONUMENT IS SET APPROXIMATELY 6' BELOW THE SURFACE. TWO MADRONE BEARING TREES PER FS 12185 ARE STILL STANDING WITH SCRIBES PARTIALLY HEALED OVER. I REMOVED THE METAL LOCATION POSTERS FROM THESE TREES.

DISTANCES TO BEARING TREES ARE TO THE CENTER OF THE TREE AT THE TOP OF THE ROOT COLLAR.



REGISTERED
PROFESSIONAL
LAND SURVEYOR

Daren L. Cone

OREGON
JUNE 8, 2009
DAREN L. CONE
43362PLS

RENEWS: DEC.31, 2013

21163