

SURVEYED FOR JUNIPER PROPERTIES, LLC

**SECTION 15 TOWNSHIP 35 SOUTH RANGE 2 EAST, W. M.
JACKSON COUNTY, OREGON
SURVEYED BY: LONE ROCK TIMBER MANAGEMENT CO.
P.O. BOX 1127 ROSEBURG, OREGON 97470
DATE: AUGUST 2012 TRACT: M35-2E-15**

CORNER INFORMATION:

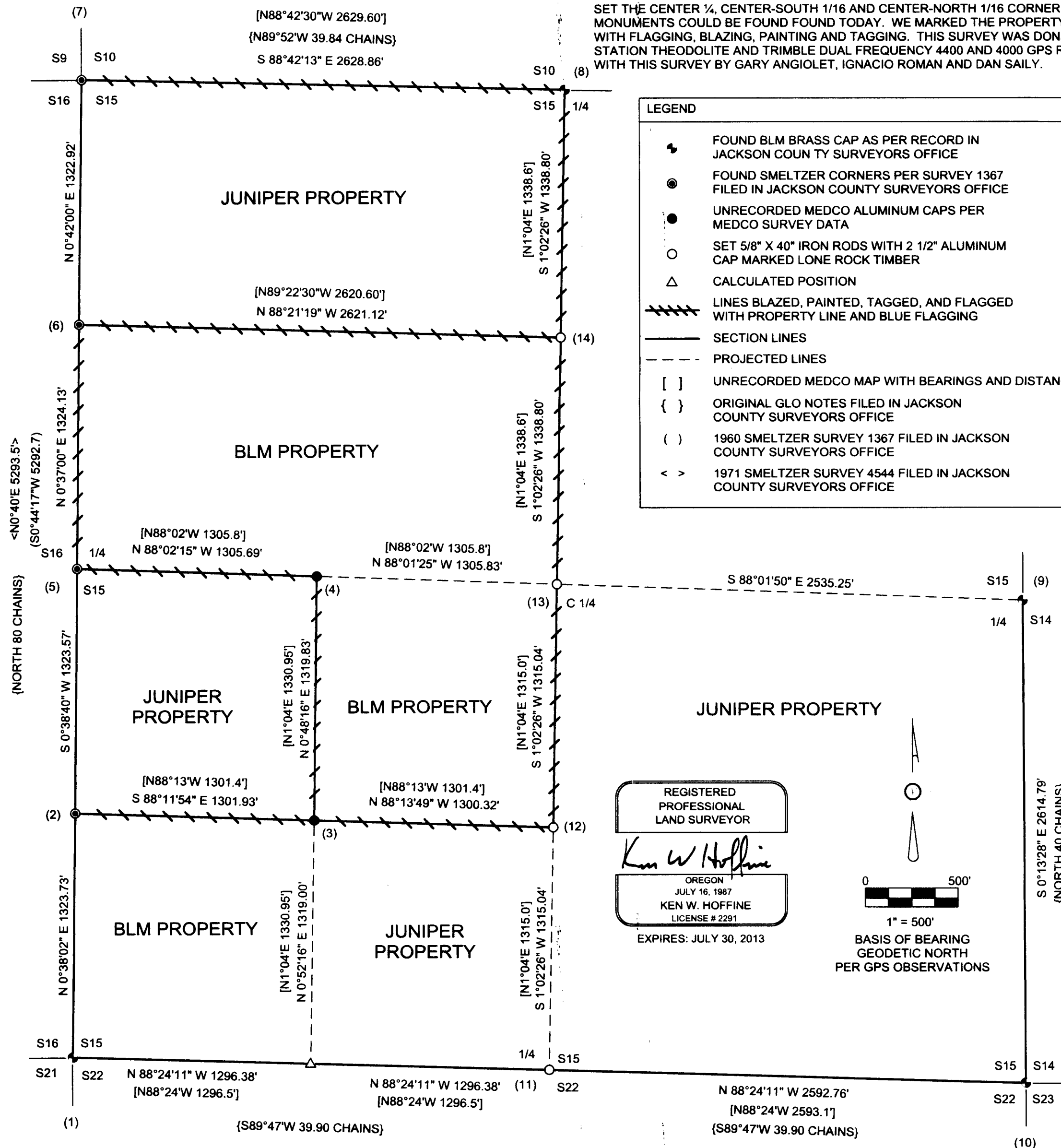
- 1) THE SOUTHWEST CORNER OF SECTION 15
FOUND 1967 BLM CAP IN MOUND OF STONES
-- 24" DOUGLAS FIR BEARS N60 1/4"E 32.06 FEET AS PER RECORD HEALED FACE AND TAG
-- 18 " WHITE FIR BEARS S42"E 44.22 FEET AS PER RECORD HEALED FACE AND TAG
-- 17" 4 FOOT TALL WHITE FIR STUMP BEARS S12"W 30.36 FEET AS PER RECORD HEALED FACE AND TAG
-- 10" WHITE FIR BEARS N62 1/2" W 26.15 FEET AS PER RECORD HEALED FACE AND TAG
CORNER LIES ON NORTHEAST SLOPE AT NORTHEAST CORNER OF RECENT LOGGING.
- 2) THE SOUTH 1/16 CORNER BETWEEN SECTIONS 15 AND 16
FOUND 1 1/2" CAP ON IRON PIPE AS PER SURVEY #1367 0.5 FEET ABOVE GROUND
-- 26" DOUGLAS FIR BEARS N69"W 11.7 FEET (RECORD N60"W 5.4 FEET HEALED FACE AND OLD FOREST SERVICE TAG
-- 21" WHITE FIR BEARS N87 3/4"E 29.8 FEET (RECORD EAST 36.2 FEET) HEALED FACE CORNER LIES ON NORTHEAST FACING SLOPE
- 3) THE SOUTHWEST 1/16 CORNER OF SECTION 15
FOUND 1 1/2" ALUMINUM CAP MARKED MEDCO 1973, 0.2 FEET ABOVE GROUND
-- 16" DOUGLAS FIR BEARS S11"W 6.4 FEET NO RECORD HEALED FACE AND TAG THAT READS N10"E 6.0 FEET
-- 28" DOUGLAS FIR BEARS N9 3/4"E 24.0 FEET HEALED FACE, NO RECORD OR TAG
CORNER LIES ON WEST FACING SLOPE APPROX. 20 FEET SOUTH OF FOUR - WHEELER TRAIL
- 4) THE CENTERWEST 1/16 CORNER OF SECTION 15
FOUND 1 1/2" ALUMINUM CAP MARKED MEDCO 1973, 1.0 FEET ABOVE GROUND
-- 10 " MADRONE BEARS N67"W 4.7 FEET WITH GROWN OVER TAG NO RECORD
-- 10" DOUGLAS FIR BEARS N15 1/4"W 18.1 FEET WE SCRIBE CW 1/16 S15 BT AND TAG
-- 13" DOUGLAS FIR BEARS N88 1/2"W 28.2 FEET WE SCRIBE CW 1/16 S15 BT AND TAG
CORNER LIES ON NORTH FACING SLOPE APPROX. 350 FEET NORTH OF THE NORTHEAST EDGE OF MEADOW
- 5) THE QUARTER CORNER BETWEEN SECTIONS 15 AND 16
FOUND SMELTZER CAP ON IRON PIPE AS PER SURVEY #1367
-- 25" FIR STUMP BEARS N86"W 33.0 FEET (RECORD N87"W 33.4 FEET) HEALED FACE AND TAG
-- 13" WHITE FIR BEARS S50 1/4"E 32.8 FEET WE SCRIBE 1/4 S15 BT AND TAG
-- 16" DOUGLAS FIR BEARS N67 1/2"W 14.1 FEET WE SCRIBE 1/4 S16 BT AND TAG
-- 15" DOUGLAS FIR BEARS N15 3/4"E 5.9 FEET WE SCRIBE 1/4 S15 BT AND TAG
-- 14" DOUGLAS FIR BEARS S34 3/4"W 8.3 FEET WE SCRIBE 1/4 S16 BT AND TAG
CORNER LIES APPROX. 50 FEET WEST OF BLM MAINLINE ROAD 35-2E-10
- 6) THE NORTH 1/16 CORNER BETWEEN SECTIONS 15 AND 16
FOUND SMELTZER CAP ON IRON PIPE AS PER SURVEY #1367 0.5 FEET ABOVE GROUND
-- 30" WHITE FIR BEARS N54 1/2"E 20.1 FEET (RECORD N50"E 20.0 FEET) HEALED FACE AND TAG
-- 15" DOUGLAS FIR BEARS N56 1/4"W 37.6 FEET WE SCRIBE N 1/16 S16 BT AND TAG
CORNER LIES APPROX. 75 FEET WEST OF BLM MAINLINE ROAD 35-2E-10, AND IS IN MOUND OF STONES
- 7) THE NORTHWEST SECTION CORNER OF SECTION 15
FOUND SMELTZER CAP ON IRON PIPE AS PER SURVEY #1367
-- LARGE FIR STUMP BEARS S32"E 16.3 FEET (RECORD S28"E 16.1 FEET) CHOPPED OUT FACE AND TAG
-- 16" DOUGLAS FIR BEARS N74"E 16.5 FEET (RECORD N76"E 16.7 FEET) HEALED DOUBLE BLAZES AND TAG
-- 20" DOUGLAS FIR BEARS S53 1/4"E 15.4 FEET (RECORD S50 1/2"E 15.4 FEET) HEALED DOUBLE BLAZES AND TAG
-- 7" WHITE FIR BEARS N15 1/4"W 27.7 FEET (RECORD N13 1/2"W 27.6 FEET) HEALED DOUBLE BLAZES AND TAG
-- 25" FIR HIGH STUMP BEARS S81 1/4"E 15.2 FEET (RECORD S82 1/4"W 15.5 FEET) HEALED DOUBLE BLAZES AND TAG
-- 18" DOUGLAS FIR SNAG BEARS S42 3/4"W 11.1 FEET (RECORD S45"W 11.2 FEET) HEALED DOUBLE BLAZES AND TAG
-- 10" PINE BEARS S34 3/4"W 23.4 FEET (RECORD S42 1/2"W 23.3 FEET) HEALED DOUBLE BLAZES AND TAG
CORNER LIES IN LARGE MOUND OF STONES APPROX. 18" ABOVE GROUND AND IS APPROX. 75 FEET EAST OF BLM MAINLINE ROAD 35-2E-10
- 8) THE QUARTER CORNER BETWEEN SECTIONS 10 AND 15
FOUND 1969 BLM CAP 1.0 FEET ABOVE GROUND
-- 12" OAK BEARS N57 3/4"W 22.9 FEET WE SCRIBE 1/4 S10 BT AND TAG TREE
-- 11" PINE BEARS S62"W 11.8 FEET WE SCRIBE 1/4 S15 BT AND TAG
CORNER LIES ON FLAT GROUND APPROX. 350 FEET WEST OF DIRT LOGGING ROAD
- 9) THE QUARTER CORNER BETWEEN SECTIONS 14 AND 15
FOUND 1969 BLM CAP 0.3 FEET ABOVE GROUND
-- 12" WHITE FIR BEARS S33 3/4"W 5.5 FEET (RECORD S36 1/4"W 5.7 FEET) VISIBLE SCRIBING AND TAG
-- 12" FIR STUMP BEARS N50 1/2"W 12.8 FEET (RECORD N49 1/2"W 12.9 FEET) VISIBLE SCRIBING NO TAG
-- 10" WHITE FIR BEARS N61 3/4"E 18.2 FEET (RECORD N63"E 18.0 FEET) VISIBLE SCRIBING AND TAG
-- 8" CEDAR BEARS S75 1/4"E 17.3 FEET (RECORD S75 1/4"E 17.2 FEET) VISIBLE SCRIBING AND TAG
CORNER LIES ON NORTH - SOUTH CUTTING LINE BLAZES AND BLM TAGS, AND IS APPROX. 150 FEET SOUTH OF DIRT ROAD
- 10) THE SOUTHEAST SECTION CORNER OF SECTION 15
FOUND 1969 BLM CAP
-- 22" FIR STUMP BEARS N11 1/2"E 7.2 FEET (RECORD N15"E 7.26 FEET) HEALED FACE STUMP HAS BEEN BURNED
-- 36" FIR STUMP BEARS S68 3/4"E 33.5 FEET (RECORD S68"E 33.00 FEET) HEALED FACE STUMP HAS BEEN BURNED
-- ROTTEN STUMP BEARS N40 1/4"W 21.5 FEET (RECORD N39"W 20.46 FEET) HEALED FACE AND STUMP HAS BEEN BURNED
-- 34" FIR STUMP BEARS S78"W 23.3 FEET (RECORD S75"W 23.10 FEET) HEALED FACE AND STUMP HAS BEEN BURNED
CORNER LIES IN RECENT WILDFIRE AREA THAT HAS HAD ALL THE MERCHANTABLE TIMBER REMOVED
- 11) THE QUARTER CORNER BETWEEN SECTIONS 15 AND 22
SET 5/8" X 40" IRON ROD WITH 2 1/2" ALUMINUM CAP MARKED LONE ROCK TIMBER T35S R2E 1/4 S15 S22 2012 PLS 2291
-- SET 5/8" X 40" IRON ROD WITH ORANGE PLASTIC CAP MARKED LONE ROCK TIMBER PLS 2291 BEARS S88"24'11"E 101.04 FEET
-- SET 5/8" IRON ROD WITH ORANGE PLASTIC CAP MARKED LONE ROCK TIMBER PLS 2291 BEARS N1"02'26"E 124.63 FEET
-- SET 5/8" IRON ROD WITH ORANGE PLASTIC CAP MARKED LONE ROCK TIMBER PLS 2291 BEARS N88"24'11"W 44.5 FEET
-- 9" DOUGLAS FIR BEARS S35 1/2"W 22.9 FEET WE SCRIBE 1/4 S22 BT AND TAG
CORNER LIES ON SOUTH SLOPE APPROX. 250 FEET NORTH OF LOGGING ROAD, RECENT WILDFIRE HAS BURNED THROUGH THIS ENTIRE AREA PUT METAL FENCE POST APPROX. 0.5 FEET EAST
- 12) THE CENTERSOUTH 1/16 TH CORNER FOR SECTION 15
SET 5/8" X 40" IRON ROD WITH 2 1/2" ALUMINUM CAP MARKED LONE ROCK TIMBER CS 1/16 S15 2012 PLS 2291
-- 28" DOUGLAS FIR BEARS N32 3/4"W 19.2 FEET WE SCRIBE CS 1/16 S15 BT AND TAG
-- 6" DOUGLAS FIR BEARS S33 1/4"W 12.6 FEET WE SCRIBE CS 1/16 S15 BT AND TAG
CORNER SITS ON NORTH FACING SLOPE APPROX. 90 FEET SOUTH OF DIRT ROAD. PUT METAL FENCE POST APPROX. 1.0 FEET NORTH OF CORNER.
- 13) THE CENTER QUARTER CORNER FOR SECTION 15
SET 5/8" X 40" IRON ROD WITH ALUMINUM CAP MARKED LONE ROCK TIMBER C 1/4 S15 2012 PLS 2291
-- 9" DOUGLAS FIR BEARS N54"E 13.9 FEET WE SCRIBE C1/4 S15 BT AND TAG TREE
-- 20" DOUGLAS FIR BEARS N32 1/2"W 14.6 FEET WE SCRIBE C1/4 S15 BT AND TAG TREE
-- 25" DOUGLAS FIR BEARS S65 3/4"W 23.9 FEET WE SCRIBE C1/4 S15 BT AND TAG TREE
-- 8" CEDAR BEARS S17 1/4"E 29.7 FEET WE SCRIBE C1/4 S15 BT AND TAG TREE
CORNER LIES ON FLAT BENCH AND IS IN NORTH WHEEL RUT OF FOUR - WHEELER TRAIL. PUT METAL FENCE POST APPROX. 1.0 FEET SOUTH OF CORNER
- 14) THE CENTERNORTH 1/16 TH CORNER FOR SECTION 15
SET 5/8" X 40" IRON ROD WITH 2 1/2" ALUMINUM CAP MARKED LONE ROCK TIMBER CN 1/16 S15 2012 PLS 2291
-- 13" DOUGLAS FIR BEARS N27 1/2"W 14.3 FEET WE SCRIBE CS 1/16 S15 BT AND TAG TREE
-- 11" DOUGLAS FIR BEARS S89 1/4"E 19.5 FEET WE SCRIBE CS 1/16 S15 BT AND TAG TREE
CORNER LIES ON NORTH SLOPE APPROX. 350 FEET SOUTH OF BLM ROAD 35 - 2E - 10.1
PUT METAL FENCE POST APPROX. 1.0 FEET NORTH OF CORNER

NARRATIVE:

THE PURPOSE OF THIS SURVEY IS TO ESTABLISH CORNERS AND MARK PROPERTY LINES FOR TIMBER MANAGEMENT AND HARVEST ACTIVITIES. THIS SECTION WAS SURVEYED AND SUBDIVIDED BY AN UNRECORDED SURVEY BY MEDFORD CORPORATION IN THE 1970'S WITH CORNER MONUMENTS SET AND PROPERTY LINES MARKED. THESE PROPERTY LINES WERE USED BY BOTH THE BLM AND MEDCO FOR NEARLY 40 YEARS FOR TIMBER MANAGEMENT PURPOSES. LONE ROCK OBTAINED WITH THE PURCHASE OF THIS PROPERTY IN 1997 AN UNRECORDED SURVEY MAP OF THE SUBDIVISION OF SECTION 15 SHOWING BEARING COURSES AND DISTANCES, WHICH WE SHOW ON THIS MAP. SINCE THIS UNRECORDED SURVEY WAS COMPLETED 40 YEARS AGO, THE SECOND GROWTH TIMBER HAS GROWN UP AND THE PROPERTY LINES NEED TO BE REESTABLISHED AND THE UNRECORDED MONUMENTS OF USE VERIFIED FOR POSITION. WE INITIATED THIS SURVEY WITH GPS CONTROL POINTS WE ESTABLISHED NEAR THE NORTH 1/4 CORNER AND THE NORTHWEST, SOUTHWEST, AND SOUTHEAST SECTION CORNERS. WE ALSO RAN RANDOM TOTAL STATION TRAVERSES ALONG PROPERTY LINES EITHER IN A CLOSED LOOP OR WE CLOSED THE TRAVERSES TO OUR GPS CONTROL POINTS. OUR SUBDIVISION OF SECTION 15 CLOSELY CORRESPONDS TO THE OLD MEDCO SUBDIVISION OF SECTION 15 WITHIN REASONABLE ERROR LIMITS AND WE ACCEPT THE POSITIONS OF THE UNRECORDED MEDCO CENTERWEST AND SOUTHWEST 1/16 MONUMENTS WE FOUND. THERE IS VARIOUS OLD EVIDENCE THAT AT ONE TIME MONUMENTS OF SOME TYPE WERE LOCATED NEAR WHERE WE SET THE CENTER 1/4, CENTER-SOUTH 1/16 AND CENTER-NORTH 1/16 CORNER, BUT NONE OF THESE MONUMENTS COULD BE FOUND TODAY. WE MARKED THE PROPERTY LINES AS SHOWN ON THIS MAP WITH FLAGGING, BLAZING, PAINTING AND TAGGING. THIS SURVEY WAS DONE WITH A NIKON DTM 522 TOTAL STATION THEODOLITE AND TRIMBLE DUAL FREQUENCY 4400 AND 4000 GPS RECEIVERS. I WAS ASSISTED WITH THIS SURVEY BY GARY ANGIOLET, IGNACIO ROMAN AND DAN SAILY.

LEGEND

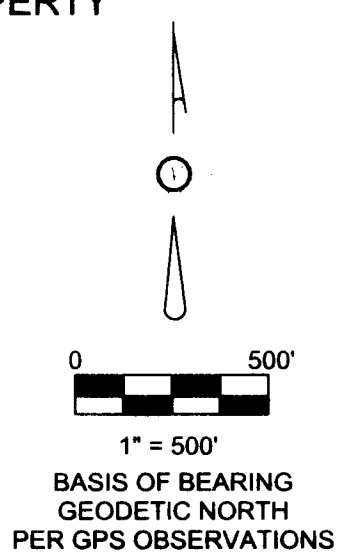
- FOUND BLM BRASS CAP AS PER RECORD IN JACKSON COUNTY SURVEYORS OFFICE
- FOUND SMELTZER CORNERS PER SURVEY 1367 FILED IN JACKSON COUNTY SURVEYORS OFFICE
- UNRECORDED MEDCO ALUMINUM CAPS PER MEDCO SURVEY DATA
- SET 5/8" X 40" IRON RODS WITH 2 1/2" ALUMINUM CAP MARKED LONE ROCK TIMBER
- △ CALCULATED POSITION
- ▬ LINES BLAZED, PAINTED, TAGGED, AND FLAGGED WITH PROPERTY LINE AND BLUE FLAGGING
- SECTION LINES
- - - - - PROJECTED LINES
- [] UNRECORDED MEDCO MAP WITH BEARINGS AND DISTANCES
- { } ORIGINAL GLO NOTES FILED IN JACKSON COUNTY SURVEYORS OFFICE
- () 1960 SMELTZER SURVEY 1367 FILED IN JACKSON COUNTY SURVEYORS OFFICE
- < > 1971 SMELTZER SURVEY 4544 FILED IN JACKSON COUNTY SURVEYORS OFFICE



REGISTERED PROFESSIONAL LAND SURVEYOR

Ken W. Hoffine

OREGON
JULY 16, 1987
KEN W. HOFFINE
LICENSE # 2291
EXPIRES: JULY 30, 2013



RECEIVED

Date 9-7-12 By [Signature]

This survey consists of:
1. survey map
2. page(s) narrative

JACKSON COUNTY SURVEYOR