

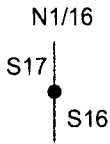
OREGON CORNER RESTORATION FORM

21121

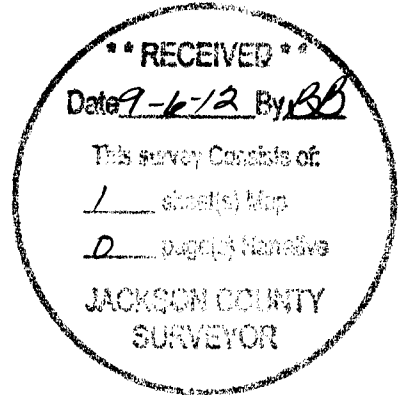
Section 16 Township 35 S. Range 2E
 County Jackson Date 8/22/12

Corner Designation

T. 35 S. R. 2 E.



- Condition Report Only
- Not Found
- Renewed
- Unrecorded
- Surveyed In
- Referenced Out



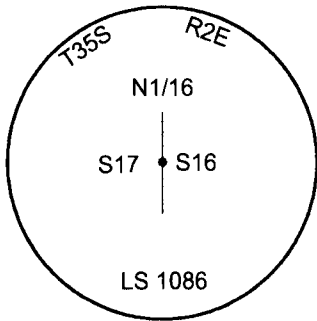
Previous Renewals/Surveys, etc.

No Record Only Unrecorded Medco Base Survey Map

Monument(s) & Accessories Found: (Condition and Source)

14" Cedar Bears N23 3/4°e 19.7 Ft. No Record Medco Tag Reads S26°W 19.7 Ft. Healed Face
24" Douglas Fir Bears N25°W 12.7 Ft. No Record Medco Tag Reads S34°E 12.8 Ft. Healed Face

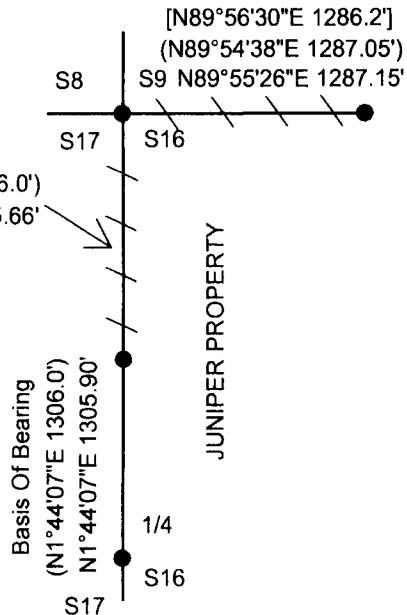
Monument Detail



LEGEND

- Found Monuments
- / — Lines Blazed & Painted
- () Medco Base Survey Map
- [] Smeltzer survey 4544

Sketch



Monument Found
 Found Rambo Cap

New Accessories

Location & Comments

Lone Rock ran a random traverse from the W 1/4 to the N 1/16 to the NWSC to the W 1/16 corners of section 16. Then rotated survey to medco base survey map record from the W 1/4 to the N 1/16 corners. then blazed and painted from the N 1/6 to the NWSC to the W 1/16 corners.

Bearing Basis Copy of Medco Unrecorded Base Survey Map
 Firm/Agency Lone Rock Timber Co.
 Address P. O. Box 1127 Roseburg, Ore. 97470
 Party Chief Ken W. Hoffine
 Notes G. Angiolet
 Witness I. Roman

