

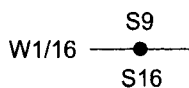
OREGON CORNER RESTORATION FORM

21120

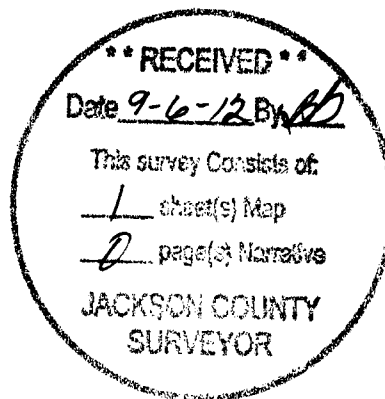
Section 16 Township 35 S. Range 2E  
 County Jackson Date 8/22/12

Corner Designation

T. 35 S. R. 2 E.



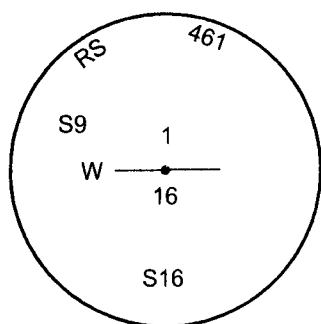
- Condition Report Only
- Not Found
- Renewed
- Unrecorded
- Surveyed In
- Referenced Out



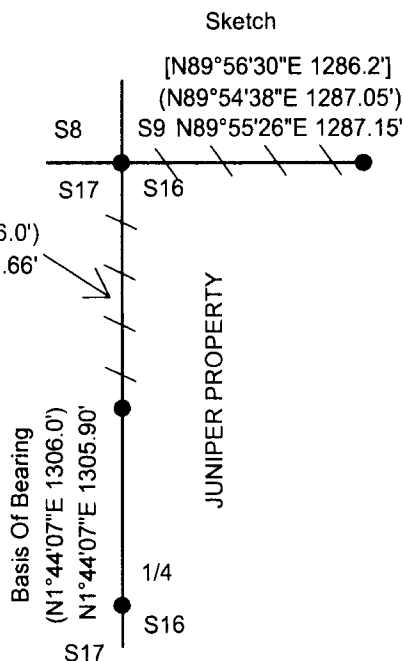
Previous Renewals/Surveys, etc. Smeltzer Survey 4544, Medco Base Survey Map

Monument(s) & Accessories Found: (Condition and Source)  
10" Pine Bears N40 1/2°W 5.8 Ft. (Record N37°E 6.0 Ft.) Healed Face and B.T. Tag  
No Evidence of 10" Douglas Fir at S37°W 30.3 Ft. per Survey 4544

Monument Detail



- LEGEND**
- Found Monuments
  - /— Lines Blazed & Painted
  - ( ) Medco Base Survey Map
  - [ ] Smeltzer survey 4544



Monument Found  
Found Smeltzer Cap Per Survey 4544

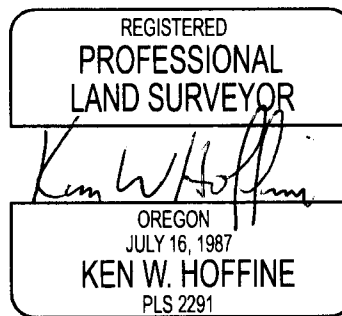
New Accessories

14" Pine Bears S45°W 57.7 Ft. We Scribe W1/6 S16 BT and Tag Tree

Location & Comments

Lone Rock ran a random traverse from the W 1/4 to the N 1/16 to the NWSC to the W 1/16 corners of section 16. Then rotated survey to medco base survey map record from the W 1/4 to the N 1/16 corners. then blazed and painted from the N 1/6 to the NWSC to the W 1/16 corners.

Bearing Basis Copy of Medco unrecorded Base Survey Map  
 Firm/Agency Lone Rock Timber Co.  
 Address P. O. Box 1127 Roseburg, Ore. 97470  
 Party Chief Ken W. Hoffine  
 Notes G. Angiolet  
 Witness I. Roman



EXPIRES 6-30-13