

M34-3E-24 INTERIOR PROPERTY CORNERS
T. 34 S. R. 3 E. SECTION 24
LINES BLAZED FROM BLM ADMINISTRATIVE SURVEY
March 6, 2012

NARRATIVE:

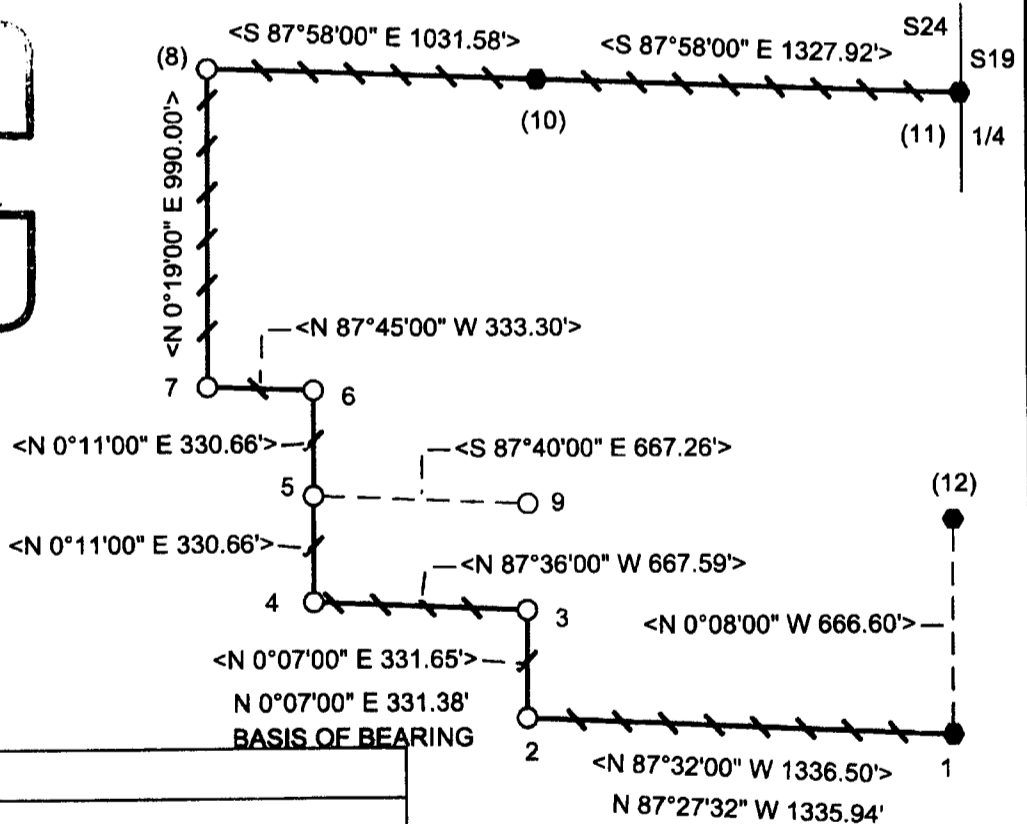
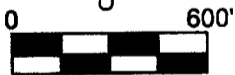
THE PURPOSE OF THIS SURVEY IS TO REMARK PROPERTY LINES ESTABLISHED BY A BLM ADMINISTRATIVE SURVEY FOR TIMBER MANAGEMENT PURPOSES. SECTION 24 WAS SUBDIVIDED BY A 1972 BLM ADMINISTRATIVE SURVEY WITH IRON RODS SET AT PROPORTIONAL SUBDIVISION POINTS AND PROPERTY LINES MARKED WITH OCCASIONAL ALUMINUM TAGS ON TREES. THESE PROPERTY LINES HAVE BEEN USED FOR THE PAST 40 YEARS BY BOTH THE BLM AND LONE ROCK'S PREDECESSOR(MEDCO) FOR PARTIAL CUT TIMBER HARVESTING ACTIVITIES. IN 2012 LONE ROCK REMARKED WITH BLAZING, PAINTING, AND RIBBONING THE PROPERTY LINES AS SHOWN ON THIS MAP. IN ORDER TO PRESERVE THE CORNER LOCATIONS, LONE ROCK ALSO RENEWED THE FOUND IRON RODS BY REFERENCING THE CORNERS WITH BEARING TREES AS SHOWN ON THIS MAP. THE SOUTH PROPERTY LINES BETWEEN CORNERS 1, 2 AND 3 HAD DISCREPANCIES AND GAPS ALONG THE OLDER MARKED PROPERTY LINES, SO LONE ROCK TIMBER RAN A RANDOM CONVENTIONAL TRAVERSE ALONG THESE LINES WITH A TOTAL STATION TO COMPUTE AND MARK THE TRUE LINE BETWEEN THE CORNERS. THIS SURVEY WAS DONE WITH GARY ANGIOLET, DAN SAILEY AND IGNACIO ROMAN ASSISTING ME.

PROFESSIONAL
 LAND SURVEYOR

Ken W. Hoffine

OREGON
 JULY 16, 1887
KEN W. HOFFINE
 2291

Expires 6-30-13



LEGEND	
○	FND 5/8" REBAR
●	FND BLM BRASS CAP
	LINES BLAZED, RIBBONED, AND TAGGED
---	PROJECTED LINES
< >	RECORD FROM BLM ADMINISTRATIVE SURVEY
○	Rebar

M34-03E-24 CORNER NOTES

- 1) THE SS 1/64 BETWEEN SECTIONS 19 AND 24
FOUND 1970 BLM BCIP 0.5 FEET ABOVE GROUND.
-- 30" DOUGLAS FIR BEARS S15°E 30.36 FEET AS PER RECORD
-- 30" WHITE FIR BEARS S27°W 36.96 FEET AS PER RECORD
- 2) THE CSSE 1/64 CORNER
FOUND 5/8" REBAR 0.7 FEET ABOVE GROUND APPROXIMATELY 50 FEET EAST OF ROCK ROAD, PUT METAL FENCE POST ALONGSIDE REBAR
-- FOUND 1972 LOCATION TAG ON 21" DOUGLAS FIR BEARS N81°W, 3.3 FEET, NO VISIBLE SCAR
-- 11" WHITE FIR BEARS S41°E, 19.5 FEET, WE SCRIBE B.T. AND TAG TREE
- 3) THE CNSSE 1/256 CORNER
FOUND 5/8" REBAR 0.5 FEET ABOVE GROUND IN MOUNT OFF STONES, PUT METAL FENCE POST ALONGSIDE REBAR
-- FOUND 1972 LOCATION TAG ON 27" DOUGLAS FIR BEARS S36°E, 16.2 FEET, NO VISIBLE SCAR
-- 18" DOUGLAS FIR BEARS S41°E, 19.5 FEET, WE SCRIBE B.T. AND TAG TREE
- 4) THE CNSWE 1/256 CORNER
FOUND 5/8" REBAR 0.7 FEET ABOVE GROUND, PUT METAL FENCE POST ALONGSIDE REBAR
-- FOUND 1972 LOCATION TAG ON 24" WHITE FIR BEARS N17°W, 7.5 FEET, NO VISIBLE SCAR
-- 14" WHITE FIR BEARS S36°E, 21.0 FEET, WE SCRIBE B.T. AND TAG TREE
- 5) THE CWSE 1/64 CORNER
FOUND 5/8" REBAR 0.5 FEET ABOVE GROUND, PUT METAL FENCE POST ALONGSIDE REBAR
-- FOUND 1972 LOCATION TAG ON 16" CEDAR SNAG BEARS N89°W, 3.6 FEET, NO VISIBLE SCAR
-- 12" WHITE FIR BEARS N12°E, 14.9 FEET, WE SCRIBE B.T. AND TAG TREE
- 6) THE CSNWSE 1/256 CORNER
FOUND 5/8" REBAR 0.7 FEET ABOVE GROUND, PUT METAL FENCE POST ALONGSIDE REBAR
-- FOUND 1972 LOCATION TAG ON 16" CEDAR SNAG BEARS N85°E, 13.75 FEET, NO VISIBLE SCAR
-- 8" WHITE FIR BEARS N51°W, 28.7 FEET, WE SCRIBE B.T. AND TAG TREE
- 7) THE SWNWSE 1/256 CORNER
FOUND 5/8" REBAR 0.5 FEET ABOVE GROUND, PUT METAL FENCE POST ALONGSIDE REBAR
-- FOUND 1972 LOCATION TAG ON 24" DOUGLAS FIR BEARS N65°W, 14.0 FEET, NO VISIBLE SCAR
-- 28" CEDAR BEARS N15°W, 23.4 FEET, WE SCRIBE B.T. AND TAG TREE
- 8) THE CWWE 1/256 CORNER
FOUND 5/8" REBAR 0.7 FEET ABOVE GROUND, PUT METAL FENCE POST ALONGSIDE REBAR
-- FOUND 1972 LOCATION TAG ON 12" DOUGLAS FIR BEARS N12°E, 11.6 FEET, VISIBLE SCAR
-- 14" DOUGLAS FIR BEARS N26°W, 10.7 FEET, WE SCRIBE B.T. AND TAG TREE
- 9) THE SE 1/16 CORNER
FOUND 5/8" REBAR 1.0 FEET ABOVE GROUND
-- 18" CEDAR STUMP 6' TALL WITH LOCATION TAG BEARS N40 ½°E
- 10) THE CENTEREAST 1/16 CORNER FOR SECTION 24
FOUND BLM BRASS CAP 1.0 FEET ABOVE GROUND IN MOUND OF STONES 3.7 FEET EAST OF ALUMINUM POST.
-- 18" CEDAR BEARS N58°26'W PER BLM TAG, HEALED FACE
-- 16" DOUGLAS FIR BEARS S57°E, 22.8 FEET PER BLM TAG, HEALED FACE
- 11) THE QUARTER CORNER BETWEEN SECTIONS 24 AND 19
FOUND BLM BRASS CAP 0.4 FEET ABOVE GROUND.
-- 28" DOUGLAS FIR BEARS N47°E, 28.0 FEET, HEALED FACE AND BLM TAG
-- 30" PINE BEARS N64°W, 29.1 FEET, HEALED FACE AND BLM TAG
CORNER LIES ON FLAT GROUND WITH TIMBER NORTH AND NEW CLEAR-CUT SOUTH OF CORNER. IRON POST BEARS EAST FROM CORNER 2.4 FEET.
- 12) THE SOUTH 1/16 CORNER BETWEEN SECTIONS 24 AND 19
FOUND BLM BRASS CAP 0.5 FEET ABOVE GROUND.
-- 26" DOUGLAS FIR 6 FOOT TALL STUMP BEARS S60°W, 33.0 FEET HEALED FACE AND BLM TAG
-- 25" DOUGLAS FIR 5 FOOT TALL STUMP BEARS N81°E, 431.1 FEET HEALED FACE AND BLM TAG
CORNER LIES 80 FEET NORTH OF CREEK AND SOUTH 38 FEET OF CENTER LINE OF OLD ROAD GRADE. ALUMINUM POST BEARS SOUTH 3.1 FEET FROM CORNER.

