

SHEET INDEX

1. CONTROL AND SURVEY NARRATIVES, CONTROL DIAGRAM, AND BASIS OF BEARING
2. SURVEY
3. RECOVERED MONUMENT TABLE AND REFERENCE LIST

NARRATIVE

THE PURPOSE OF THIS SURVEY IS TO RESOLVE THE FIELD LOCATION OF THE RIGHT OF WAY CENTERLINE AND THE RIGHT OF WAY MARGINS FOR PORTIONS OF MAIN STREET AND FIRST STREET IN JACKSONVILLE, OREGON. THIS SURVEY WAS MADE AT THE REQUEST OF THE CITY OF JACKSONVILLE AND THE OREGON DEPARTMENT OF TRANSPORTATION FOR A ROADWAY IMPROVEMENT PROJECT.

THIS SURVEY MEETS THE REQUIREMENTS FOR A RECOVERY SURVEY AS OUTLINED IN THE OREGON REVISED STATUTES CHAPTER 209.155. PERPETUATION OF THE LOCATIONS WAS ACCOMPLISHED BY TYING THE FOUND MONUMENTS OF RECORD TO THE PROJECT CONTROL NETWORK

THIS SURVEY WAS PERFORMED DURING SEPTEMBER, OCTOBER, AND NOVEMBER OF 2011. THE SURVEY EQUIPMENT USED CONSISTED OF ONE TRIMBLE R8 GPS RECEIVER, ONE TRIMBLE S6 ROBOTIC TOTAL STATION, ONE TRIMBLE TSC2 CONTROLLER RUNNING SURVEY CONTROLLER VERSION 12.22 SOFTWARE, AND ONE TRIMBLE TSC3 CONTROLLER RUNNING TRIMBLE ACCESS VERSION 2011.10.

MAIN STREET - "M" LINE

THE CENTERLINE OF MAIN STREET BETWEEN OREGON STREET AND HIGHWAY 238 WAS RESOLVED BY HOLDING THE TWO FOUND CENTERLINE MONUMENTS TIED AS POINT NUMBERS 1000 AND 1003 AS SHOWN HEREON. THE RIGHT-OF-WAY MARGINS WERE THEN OFFSET PARALLEL WITH SAID CENTERLINE THE RECORD DISTANCE OF 25.00'. "M" LINE STATIONING IS PROJECT SPECIFIC.

FIRST STREET - "F" LINE

THE CENTERLINE OF FIRST STREET BETWEEN MAIN STREET AND FIR STREET WAS RESOLVED BY HOLDING THE TWO FOUND CENTERLINE MONUMENTS TIED AS POINT NUMBERS 1000 AND 1008 AS SHOWN HEREON. THE RIGHT-OF-WAY MARGINS WERE THEN OFFSET PARALLEL WITH SAID CENTERLINE THE RECORD DISTANCE OF 25.00 FEET AND 30.00 FEET AS SHOWN HEREON. "F" LINE STATIONING IS PROJECT SPECIFIC.

CONTROL NARRATIVE

PROJECT: FIRST ST. & MAIN ST. SIDEWALK AND STREET SCAPE: JACKSONVILLE, OR
 LOCATION: JACKSON COUNTY
 ODOT KEY NUMBER: 16808
 OBEC PROJECT: 019-100.08
 SURVEY DATUM:
 HORIZONTAL - NAD 83(CORS 96) EPOCH 2002 (INTERNATIONAL FEET)
 VERTICAL - NAVD 88 (INTERNATIONAL FEET)

HORIZONTAL CONTROL SURVEY

THE PRIMARY HORIZONTAL CONTROL WAS BROUGHT INTO THE PROJECT BY USING AN OPUS-RS SOLUTION FROM CORS STATIONS "DDSN, DCSO, ORK6, PTSG, CABL, TRND, P170, P349, P341" TO ESTABLISH POSITIONS ON POINTS 1 AND 2. THE LOCAL DATUM PLANE (LDP) COORDINATES FOR CONTROL POINTS 1 AND 2 WERE CALCULATED BY APPLYING THE MEAN COMBINED SCALE FACTOR TO THE OREGON STATE PLANE COORDINATE SYSTEM - SOUTH ZONE NAD 83(CORS96) EPOCH 2002 COORDINATES OF CONTROL POINTS 1 AND 2. A SUBSEQUENT LEAST SQUARES ADJUSTED CONVENTIONAL TRAVERSE WAS THEN RUN TO ESTABLISH LDP COORDINATES FOR CONTROL POINT NUMBERS 3, 4, AND 5. TO CONVERT THE PROJECT LDP COORDINATES TO THE OREGON STATE PLANE COORDINATE SYSTEM - SOUTH ZONE NAD 83(CORS96) EPOCH 2002, MULTIPLY THE COORDINATE VALUES BY A COMBINED FACTOR OF 0.99992882. THE BASIS OF BEARING FOR THIS SURVEY IS BASED ON A STRAIGHT LINE BETWEEN CONTROL POINTS 1 AND 2.

CONTROL POINTS FOR THIS SURVEY WERE NOT SET ON AND DO NOT REPRESENT PROPERTY LINES OR RIGHT-OF-WAY LINES AND ARE INTENDED FOR USE SOLELY BY THE CITY OF JACKSONVILLE, THE OREGON DEPARTMENT OF TRANSPORTATION (ODOT), AND OBEC CONSULTING ENGINEERS IN SUPPORT OF FUTURE PROJECTS. IT IS NOT THE INTENT OF THE CITY OF JACKSONVILLE, ODOT, OR OBEC CONSULTING ENGINEERS TO PERPETUATE THESE CONTROL POINTS AS MONUMENTS.

CONTROL POINT COORDINATE TABLE *CONVERGENCE ANGLE AT POINT NO. 1 = -1°41'20"

PT ID	LDP NORTHING	LDP EASTING	DATE	DESCRIPTION
1	245790.57	4253905.11	9-7-11	SET 1" COPPER DISK STAMPED "OBEC"
2	245346.71	4253411.36	9-7-11	SET MAGNAIL AND WASHER STAMPED "OBEC CONTROL"
3	246026.56	4253659.44	9-7-11	SET 1" COPPER DISK STAMPED "OBEC"
4	245765.64	4253426.55	9-7-11	SET MAGNAIL AND WASHER STAMPED "OBEC CONTROL"
5	245553.74	4253175.51	9-7-11	SET MAGNAIL AND WASHER STAMPED "OBEC CONTROL"

NW 1/4 SEC 32 T37S R2W WM

RESIDUALS FOR DISTANCES

BETWEEN	DISTANCE**	DISTANCE RESIDUAL
1 3	340.65'	0.006'
3 4	349.74'	0.013'
4 5	328.51'	0.011'
5 2	313.82'	0.005'

** CALCULATED HORIZONTAL GRID DISTANCES IN FEET DERIVED FROM THE MEASURED SLOPE GRID DISTANCES

RESIDUALS FOR ANGLES

BACKSIGHT STATION	OCCUPIED STATION	FORESIGHT STATION	RESIDUAL
2	1	3	-0°00'08.6"
1	3	4	0°00'05.5"
3	4	5	0°00'02.8"
4	5	2	0°00'03.0"
5	2	1	-0°00'10.8"

1.96 SIGMA (95%) CONFIDENCE LEVEL LIMITS

POINT NO	SEMI MAJOR	SEMI MINOR	ORIENTATION*
3	0.02 INT FT	0.02 INT FT	72.3°
4	0.02 INT FT	0.02 INT FT	32.7°
5	0.02 INT FT	0.02 INT FT	13.0°

*** NORTH AZIMUTH**

FIXED POINTS NOT SUBJECT TO LEAST SQUARES ADJUSTMENT OR CONFIDENCE LEVEL ANALYSIS: POINTS 1 AND 2

LEGEND	
	SET GPS CONTROL POINT
	SET NETWORK POINT
	LINES OF OBSERVATION
	EDGE OF PAVEMENT

OPUS-RS NOTES

OREGON STATE PLANE SOUTH ZONE (3602) COORDINATE VALUES WERE DERIVED ON CONTROL POINT NUMBERS 1 AND 2 USING AN NGS OPUS-RS SOLUTION WITH THE FOLLOWING CORS STATIONS BEING HELD: DDSN, DCSO, ORK6, PTSG, CABL, TRND, P170, P349, P341

REGISTERED PROFESSIONAL LAND SURVEYOR

1/10/12

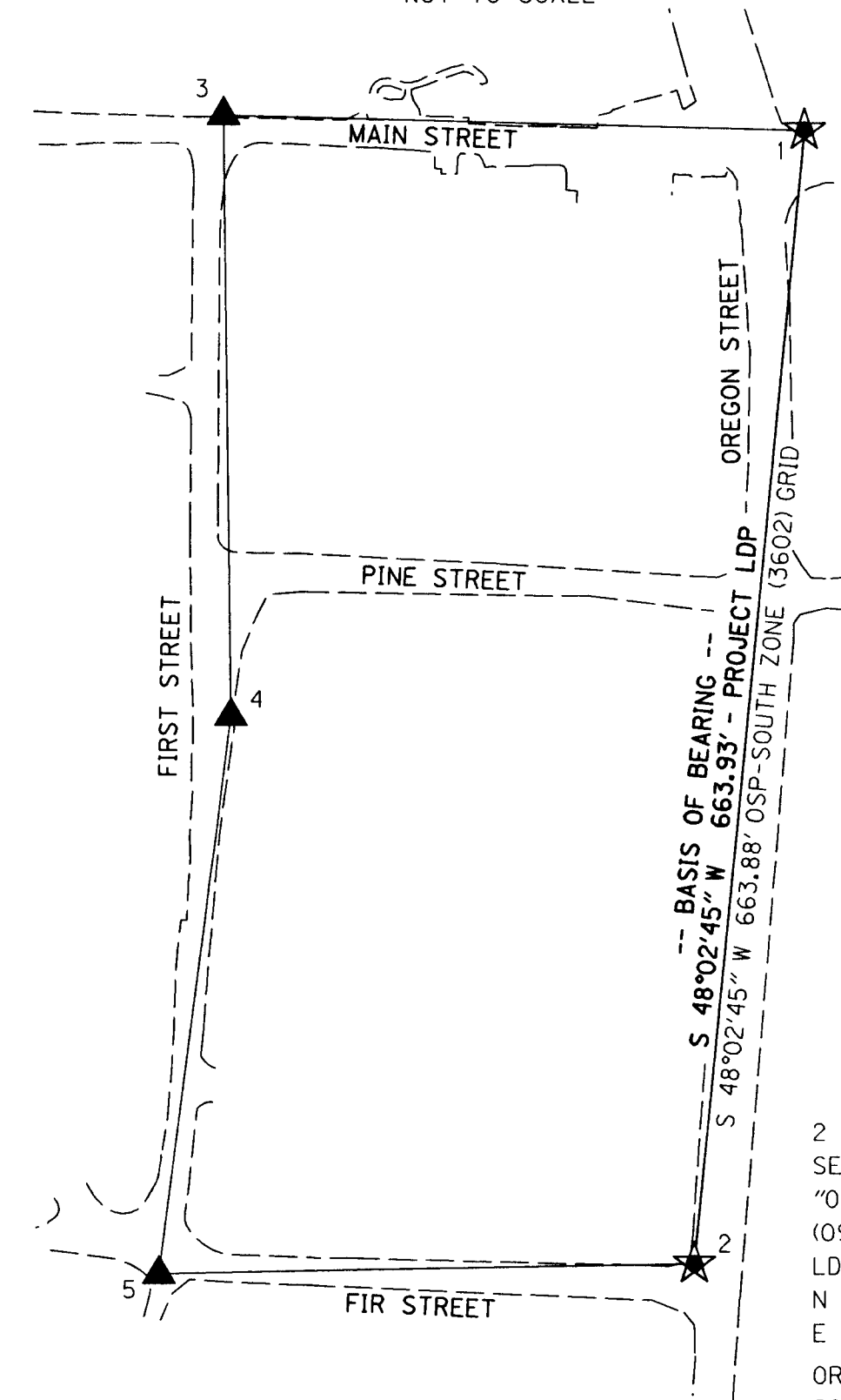
OBEC CONSULTING ENGINEERS

OREGON JULY 12, 2005 ARON JAMES CUTSFORTH 65696 RENEWAL: DEC. 31, 2013

J. COLTON OBEC APPROVED BY: GROUP MANAGER

CONTROL NETWORK SCHEMATIC & BASIS OF BEARING

NOT TO SCALE



** RECEIVED **
 DATE 1-11-12 BY JB
 This survey consists of:
 3 sheet(s) Map
 0 page(s) Narrative
 JACKSON COUNTY SURVEYOR

1 SET 1" COPPER DISK IN CONC. INLET (09/07/11)
 LDP PROJECT VALUES
 N 245790.57
 E 4253905.11
 OREGON STATE PLANE SOUTH ZONE (3602)
 N 245773.08
 E 4253602.32

2 SET MAGNAIL & WASHER "OBEC CONTROL" (09/07/11)
 LDP PROJECT VALUES
 N 245346.71
 E 4253411.36
 OREGON STATE PLANE SOUTH ZONE (3602)
 N 245329.25
 E 4253108.60

FILE NAME: 16808ret.dgn

OBEC CONSULTING ENGINEERS
 Corporate Office: 920 COUNTRY CLUB ROAD, SUITE 100B EUGENE, OREGON 97401-6089, 541-683-6090
 2235 MISSION STREET SE, SUITE 100 SALEM, OREGON 97302-1295, 503-589-4100
 831 OHARE PARKWAY MEDFORD, OREGON 97504-4005, 541-774-5590
 5005 SW MEADOWS ROAD, SUITE 120 LAKE OSWEGO, OREGON 97035, 503-620-6103

CITY OF JACKSONVILLE PUBLIC WORKS
 OREGON DEPARTMENT OF TRANSPORTATION
 HORIZONTAL CONTROL, RECOVERY AND RETRACEMENT SURVEY
 FIRST ST. & MAIN ST. SIDEWALK AND STREETSCAPE
 JACKSON COUNTY

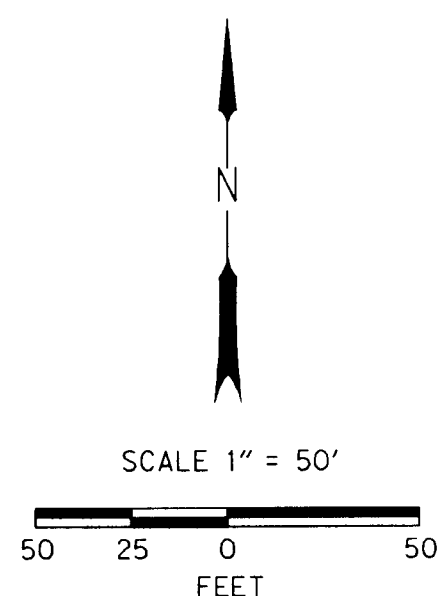
ODOT REGION 3
 100 ANTELOPE ROAD
 WHITE CITY, OR 97503
 KEY NO. 16808

JANUARY, 2012
 NO SCALE
 SHEET 1 OF 3

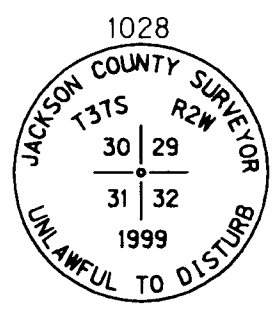
PROJ. NO. 019-100.08

DESIGNED: A. CUTSFORTH
 DRAWN: E. BLAKE
 CHK'D: J. COLTON

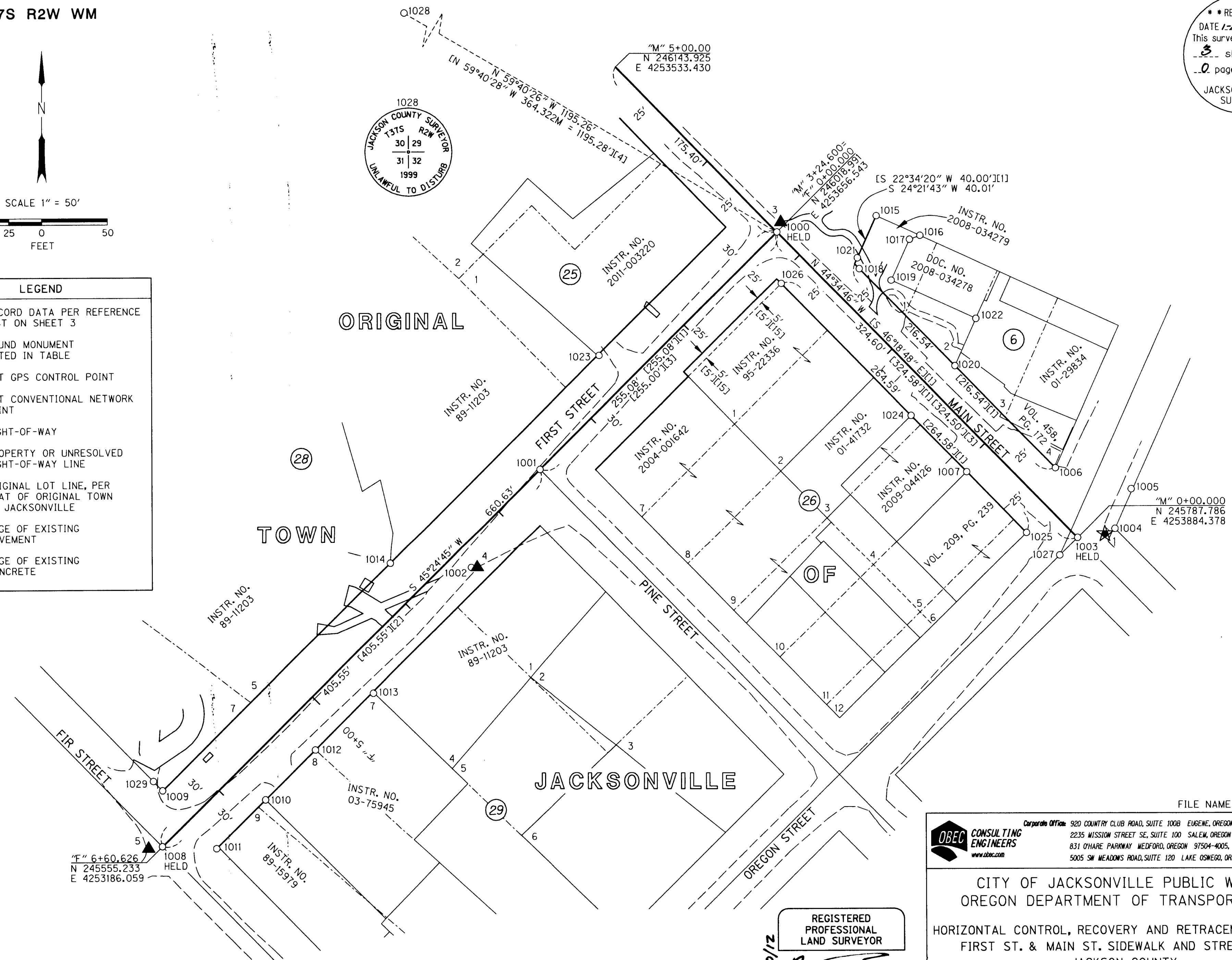
NW 1/4 SEC 32 T37S R2W WM



LEGEND	
[]	RECORD DATA PER REFERENCE LIST ON SHEET 3
○	FOUND MONUMENT NOTED IN TABLE
★	SET GPS CONTROL POINT
▲	SET CONVENTIONAL NETWORK POINT
—	RIGHT-OF-WAY
—	PROPERTY OR UNRESOLVED RIGHT-OF-WAY LINE
- - -	ORIGINAL LOT LINE, PER PLAT OF ORIGINAL TOWN OF JACKSONVILLE
- - -	EDGE OF EXISTING PAVEMENT
—	EDGE OF EXISTING CONCRETE



*** RECEIVED ***
 DATE 1-12-12 BY *cb*
 This survey consists of:
 3 sheet(s) Map
 0 page(s) Narrative
 JACKSON COUNTY SURVEYOR



SEE SHEET 3 FOR RECOVERED MONUMENT LIST

REGISTERED PROFESSIONAL LAND SURVEYOR
 1/10/12
AS
 OREGON
 JULY 12, 2005
 ARON JAMES CUTSFORTH
 65696
 RENEWAL: DEC. 31, 2013

OBEC CONSULTING ENGINEERS
 Corporate Office: 920 COUNTRY CLUB ROAD, SUITE 100B EUGENE, OREGON 97401-6089, 541-683-6090
 2235 MISSION STREET SE, SUITE 100 SALEM, OREGON 97302-1295, 503-589-4100
 831 O'HARE PARKWAY WEDFORD, OREGON 97504-4005, 541-774-5590
 5005 SW MEADOWS ROAD, SUITE 120 LAKE OSWEGO, OREGON 97035, 503-620-6103
 www.obec.com

FILE NAME: 16808ret.dgn

CITY OF JACKSONVILLE PUBLIC WORKS
 OREGON DEPARTMENT OF TRANSPORTATION

HORIZONTAL CONTROL, RECOVERY AND RETRACEMENT SURVEY
 FIRST ST. & MAIN ST. SIDEWALK AND STREETScape
 JACKSON COUNTY

ODOT REGION 3
 100 ANTELOPE ROAD
 WHITE CITY, OR 97503
 DESIGNED: A. CUTSFORTH
 DRAWN: E. BLAKE

JANUARY, 2012
 SCALE 1" = 50'
 SHEET 2 OF 3
 KEY NO. 16808
 PROJ. NO. 019-100.08
 CHK'D: J. COLTON