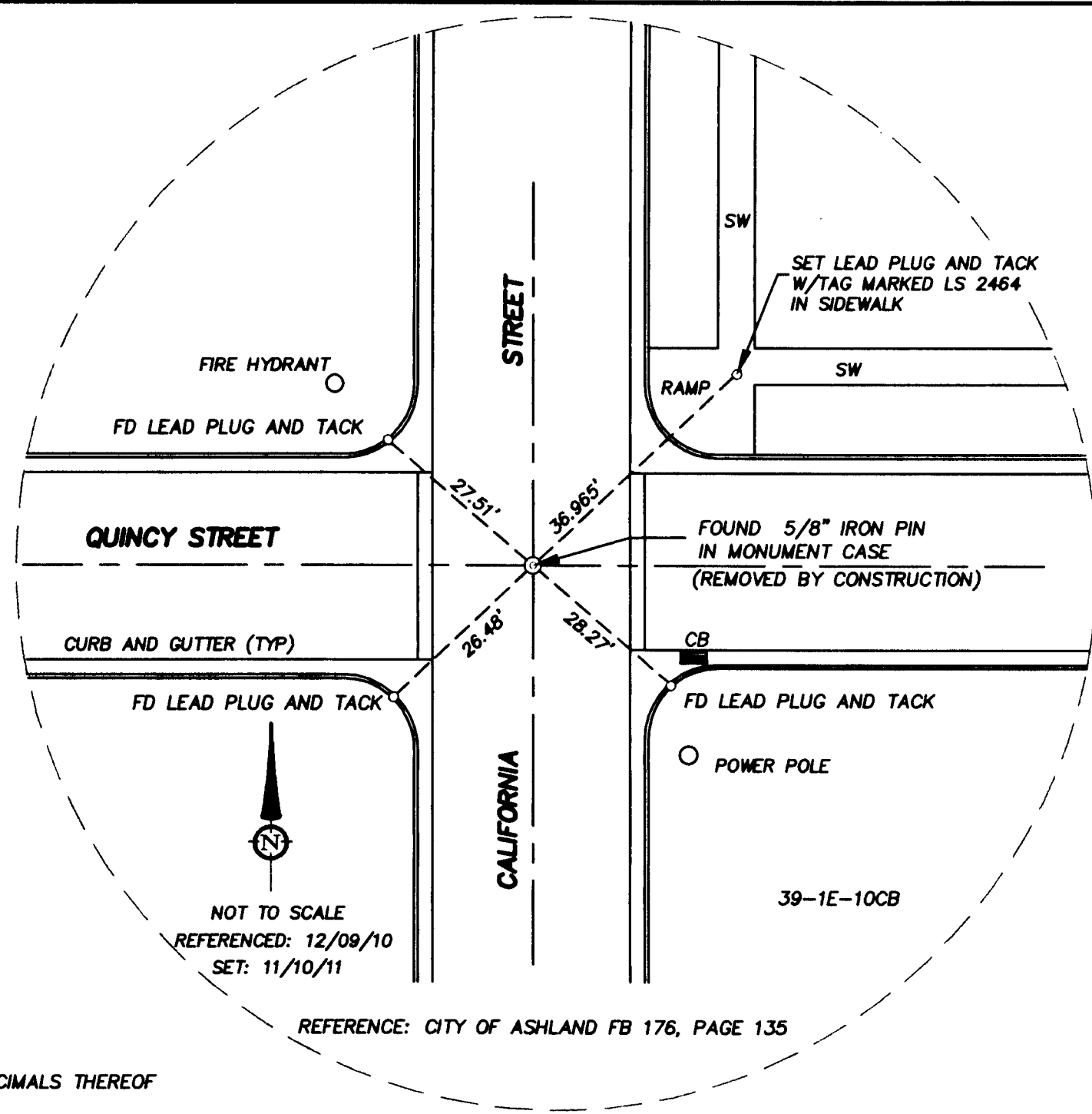
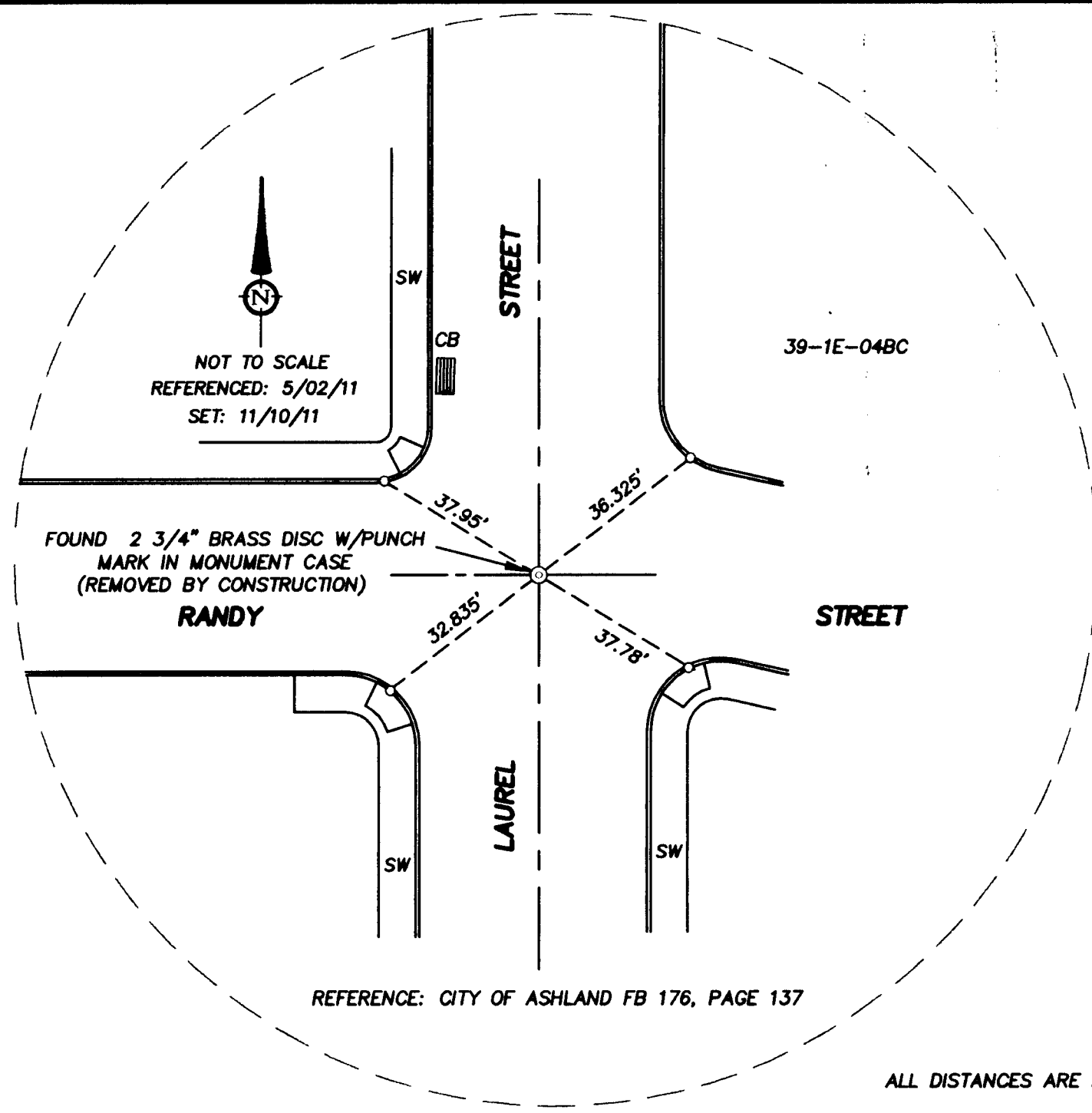


# MAP OF SURVEY

FOR  
CITY OF ASHLAND, ENGINEERING DIVISION  
20 EAST MAIN STREET, ASHLAND, OREGON 97520

LOCATED IN  
THE NW 1/4 OF SECTION 4, THE SE 1/4 OF SECTION 5 AND  
THE SW 1/4 OF SECTION 10  
TOWNSHIP 39 SOUTH, RANGE 1 EAST, WILLAMETTE MERIDIAN,  
CITY OF ASHLAND, JACKSON COUNTY, OREGON



ALL DISTANCES ARE IN FEET AND DECIMALS THEREOF

### LEGEND

- ⊙ SET 1" X 30" IRON PIPE W/3" DIAMETER BRASS CAP W/DRILL HOLE, STAMPED "CITY OF ASHLAND SURVEY MONUMENT LS 2464" IN STANDARD STREET MONUMENT CASE
- REFERENCE POINT: SET 3/16" DRILL HOLE W/LEAD PLUG AND TACK IN TOP OF CURB, UNLESS OTHERWISE NOTED
- FOUND MONUMENT AS NOTED
- TOP OF CURB
- - - STREET CENTERLINE
- ▤ CB STORM DRAIN CATCH BASIN
- MH SANITARY SEWER MANHOLE
- FB FIELD BOOK
- SW SIDEWALK

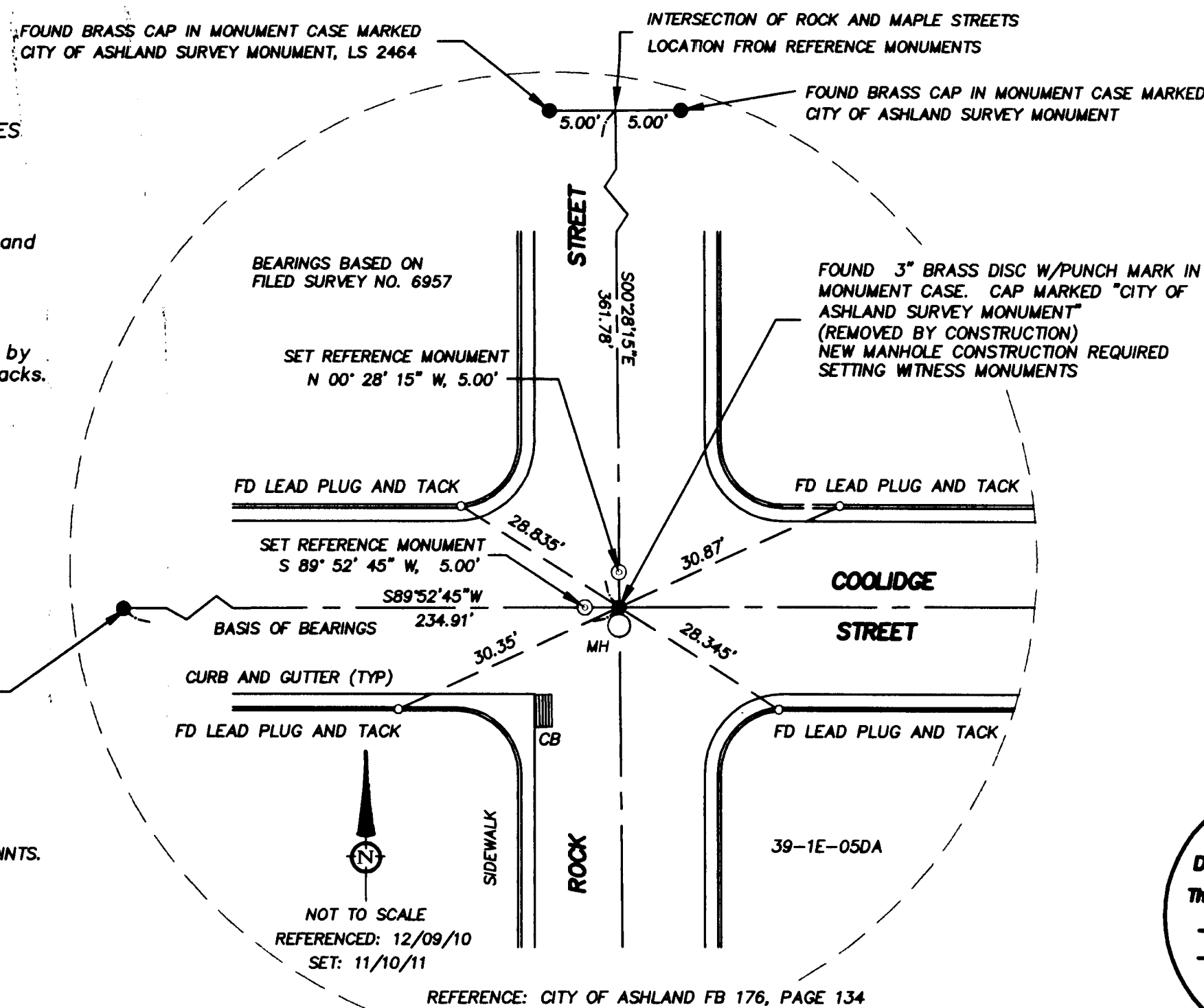
### SURVEY NARRATIVE TO COMPLY WITH PARAGRAPH 209.250, OREGON REVISED STATUTES

#### PURPOSE:

To reference and replace monuments removed by various street and utility repair projects in Ashland.

**PROCEDURE:** Prior to construction, monuments were referenced by drilling holes in the concrete curbs and setting lead plugs and tacks. In some cases, lead plugs and tacks were found from previous reference surveys. After the street was paved or patched, new monuments and cases were set.

December 20, 2011



#### NOTES

1. ALL FOUND MONUMENTS WERE AT THE INTERSECTION OF REFERENCE POINTS.
2. ALL DISTANCES MEASURED WITH TOPCON GPT 3002W TOTAL STATION

•• RECEIVED ••  
Date 12-29-11 By *tbh*  
This Survey Consists of:  
1 Sheets Map  
2 Pages Narrative  
JACKSON COUNTY  
SURVEYOR

REGISTERED  
PROFESSIONAL  
LAND SURVEYOR

OREGON  
JULY 25, 1990  
STUART M. OSMUS  
No. 2484  
Expires 12-31-13

## TERRASURVEY, INC.

PROFESSIONAL LAND SURVEYORS

274 FOURTH STREET  
ASHLAND, OREGON 97520  
(541) 482-6474  
terrain@tisp.net