

MAP OF SURVEY

Located in the Northeast One-quarter of Section 3,
Township 37 South, Range 2 West of the
Willamette Meridian, City of Central Point,
Jackson County, Oregon.

**** RECEIVED ****
Date 2-1-11 By EB
This survey consists of:
1 sheet(s) Map
0 page(s) Narrative
JACKSON COUNTY
SURVEYOR

PREPARED FOR:

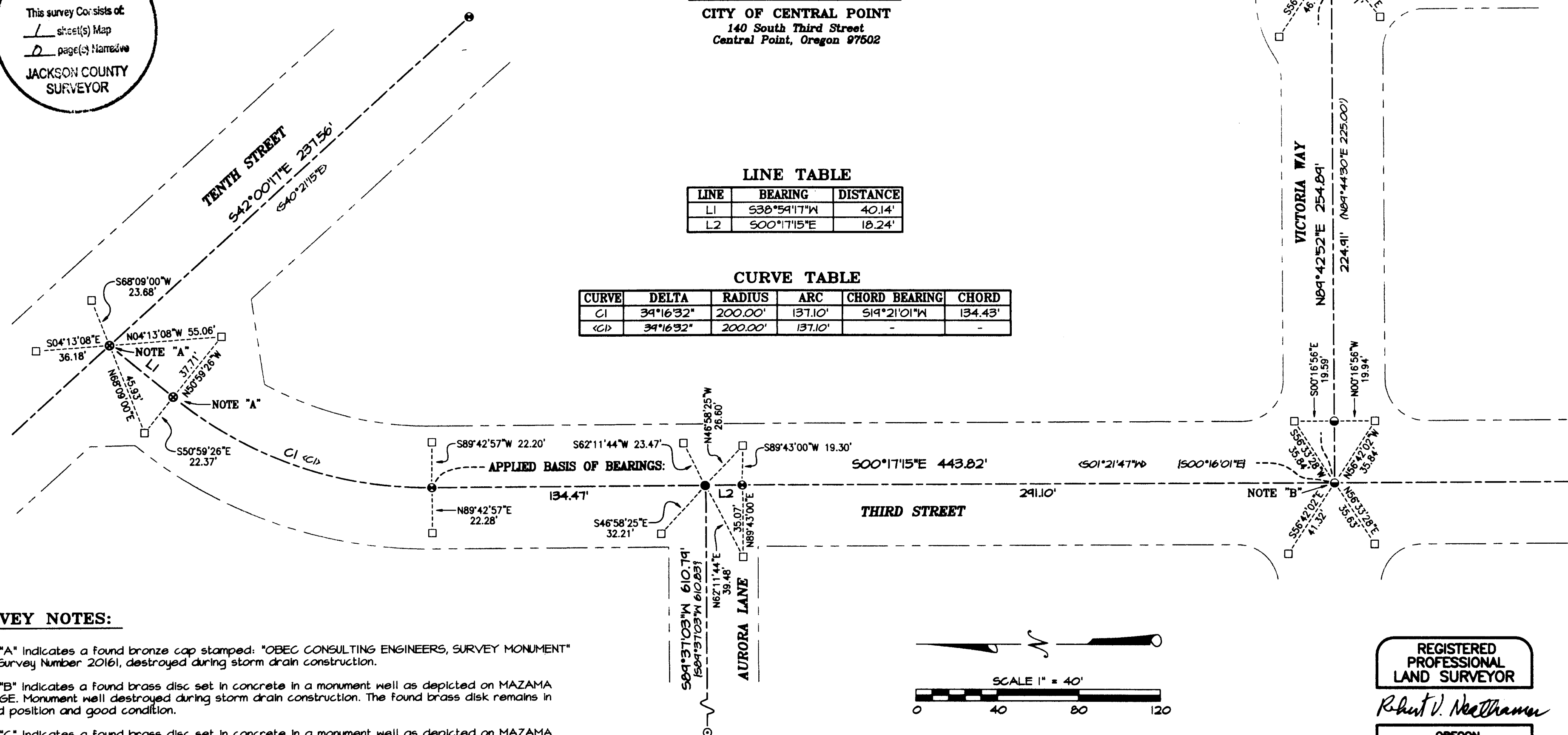
CITY OF CENTRAL POINT
140 South Third Street
Central Point, Oregon 97502

LINE TABLE

LINE	BEARING	DISTANCE
L1	S38°59'17"W	40.14'
L2	S00°17'15"E	18.24'

CURVE TABLE

CURVE	DELTA	RADIUS	ARC	CHORD BEARING	CHORD
C1	39°16'32"	200.00'	137.10'	S19°21'01"W	134.43'
<C1>	39°16'32"	200.00'	137.10'	-	-



SURVEY NOTES:

NOTE "A" indicates a found bronze cap stamped: "OBEC CONSULTING ENGINEERS, SURVEY MONUMENT" Filed Survey Number 20161, destroyed during storm drain construction.

NOTE "B" indicates a found brass disc set in concrete in a monument well as depicted on MAZAMA VILLAGE. Monument well destroyed during storm drain construction. The found brass disk remains in record position and good condition.

NOTE "C" indicates a found brass disc set in concrete in a monument well as depicted on MAZAMA VILLAGE, destroyed during storm drain construction.

SURVEY NARRATIVE TO COMPLY WITH PARAGRAPH 209.250, OREGON REVISED STATUTES

PURPOSE: The City of Central Point requested the establishment of reference points for existing street centerline monumentation on portions of Third Street, Victoria Way and Tenth Street prior to construction of an underground storm drain system. Upon completion of said storm drain system, replace any damaged or destroyed centerline monuments. Additionally the City of Central Point requested the preparation and filing of a Map of Survey with Jackson County, Oregon.

PROCEDURE: Utilizing Trimble 5700 GPS equipment, a Trimble S6 Robotic Total Station and Trimble TSC2 Data Collectors with Trimble Survey Controller software and Real-time Kinematic methods utilizing the Oregon Real-time GPS Network (ORGN), all found monuments were tied within closed loop traverses or via redundant ties.

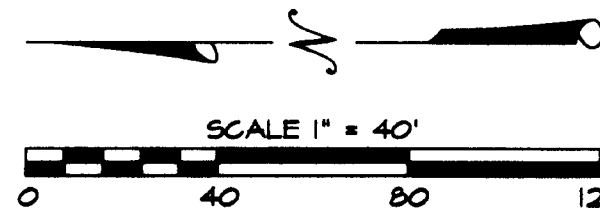
Utilizing said GPS equipment and RTK methods, established the Basis of Bearings and applied it between the centerline monuments as depicted hereon.

Records utilized for this survey: MAZAMA VILLAGE, SCENIC MEADOWS and Survey Number 20161, as filed in the office of the Jackson County Surveyor.

Established reference points in existing curb lines as depicted hereon on February 25, 2011, and re-established three centerline monuments on May 23, 2011, as depicted hereon.

LEGEND:

- ⊙ Indicates a set 5/8-inch diameter by 30 inches long iron pin with an aluminum cap marked "NEATHAMER SURVEYING".
- Indicates a set 38-caliber shell casing set in curb line, top set at or just below the surface.
- ⊕ Indicates a found brass cap per SN 20161.
- ⊙ Indicates a found brass disc per MAZAMA VILLAGE.
- ⊙ Indicates a found aluminum cap per SCENIC MEADOWS, SN 19262.
- Indicates a found 5/8 inch iron pin, no cap, per SCENIC MEADOWS, SN 19262.
- < > Indicates record information as per SN 20161.
- { } Indicates record information as per SCENIC MEADOWS, according to the official plat thereof, filed as Survey Number 19262 in the office of the Jackson County Surveyor.
- () Indicates record information as per MAZAMA VILLAGE, according to the official plat thereof.
- SN Indicates a survey filed by number in the office of the Jackson County Surveyor.



**REGISTERED
PROFESSIONAL
LAND SURVEYOR**

Robert V. Neathamer

**OREGON
JULY 18, 1984
ROBERT V. NEATHAMER
2875**

Renewal Date 12/31/12

BASIS OF BEARINGS:

Geodetic North, referenced to the NAD83 (GORS 96) (Epoch 2002.0000) datum, utilizing GPS equipment and the Oregon Real-time GPS Network (ORGN). Basis was applied between the centerline monuments on Third Street, as depicted hereon.

PREPARED BY: **Neathamer Surveying, Inc.**
3126 St, Suite 100
P.O. Box 1584
Medford, Oregon 97501
Phone (541) 732-2869
FAX (541) 732-1382

PLOT DATE: August 1, 2011 **PROJECT NUMBER:** 09002-K2

Sheet 1 of 1 © DPC