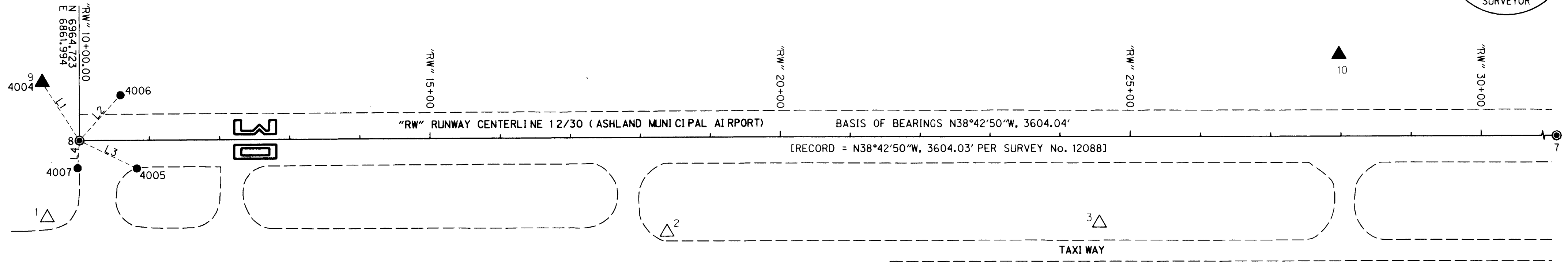


SHEET INDEX

- 1. NARRATIVE, SURVEY
- 2. CONTROL NARRATIVE, SURVEY

SW 1/4 SEC 12 T39S R1E WM  
 SE 1/4 SEC 11 T39S R1E WM  
 NE 1/4 SEC 11 T39S R1E WM

\*\*RECEIVED\*\*  
 DATE 7-15-11 BY *[Signature]*  
 This survey consists of:  
 2 sheet(s) Map  
 0 page(s) Narrative  
 JACKSON COUNTY  
 SURVEYOR



REFERENCE POINTS LINE TABLE

LINE NO.	BEARING	DISTANCE
L1	S 18°32'17" W	98.32'
L2	N 86°09'36" W	86.75'
L3	N 12°31'36" W	91.24'
L4	N 55°21'09" E	39.51'

NARRATIVE

THE PURPOSE OF THIS SURVEY IS TO PERPETUATE THE POSITIONS OF ANY EXISTING SURVEY MONUMENTS OF RECORD THAT LIE WITHIN THE PROJECT AREA IN SUPPORT OF THE RECONSTRUCTION OF THE ASHLAND MUNICIPAL AIRPORT RUNWAY 12-30. THIS WAS ACCOMPLISHED BY TYING THE ORIGINAL FOUND CENTERLINE MONUMENTS (POINTS NUMBERED 7 AND 8) TO THE EXISTING PROJECT CONTROL NETWORK, PROVIDED BY THE ENGINEER OF RECORD FOR THE PROJECT, PRIOR TO THEIR DESTRUCTION DURING THE CONSTRUCTION OF THE NEW RUNWAY. THE FOUND CENTERLINE MONUMENTS, AS WELL AS NEW REFERENCE POINTS WERE THEN RESET IN ACCORDANCE WITH THE PROJECT SPECIFICATIONS AS SHOWN HEREON. THIS SURVEY WAS MADE AT THE REQUEST OF CITY OF ASHLAND IN SUPPORT OF A PROJECT IN THE PREVIOUSLY DESCRIBED VICINITY. THE CENTERLINE OF THE RUNWAY WAS ESTABLISHED BY HOLDING THE ORIGINAL POSITIONS OF THE CENTERLINE MONUMENTS AS SHOWN HEREON. NEW BRASS CAPS WERE SET IN PLACE OF THE ORIGINAL MONUMENTS AFTER THE RECONSTRUCTION OF THE RUNWAY WAS COMPLETE. THE RECORD BEARING FOR THE CENTERLINE OF THE RUNWAY WAS HELD PER SURVEY NUMBER 12088 AS SHOWN HEREON.

THIS SURVEY WAS PERFORMED IN APRIL THROUGH JULY OF 2011. THE SURVEY EQUIPMENT CONSISTED OF ONE TRIMBLE R8 GPS RECEIVER, ONE TRIMBLE S6 ROBOTIC TOTAL STATION AND ONE TRIMBLE TSC2 DATA COLLECTOR.

REFERENCES

SURVEY NUMBER 12088, RECORD CONSTRUCTION DRAWINGS FOR RUNWAY RE-HAB PROJECT

RTK (ORGN) GPS CALIBRATION TO PROJECT CONTROL RESIDUALS

PT ID	HORZ. CALIBRATION RESIDUAL
1	0.021'
2	0.014'
3	0.021'

**PROJECT LEGEND**

- [ ] RECORD DATA PER SURVEY NO. 12088
- △ FOUND CONTROL POINT, NOTED IN TABLE
- ▲ SET CONTROL POINT, NOTED IN TABLE
- SET MONUMENT, NOTED IN TABLE
- SET BRASS CAP, NOTED IN TABLE
- EDGE OF EXISTING PAVEMENT

SET MONUMENTS TABLE

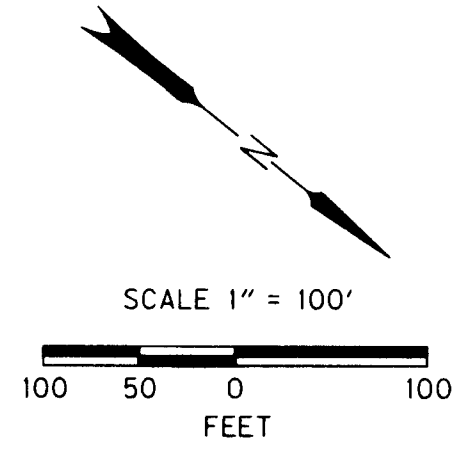
PT. NO.	NORTHING	EASTING	DATE	DESCRIPTION
8	6964.72	6861.99	07/05/11	SET 3" BRASS CAP OVER 2" IRON PIPE IN CONCRETE, MARKED "CITY OF ASHLAND, SURVEY MARKER", FLUSH WITH TOP OF RUNWAY (MONUMENT SET AT ORIGINAL LOCATION, AS MEASURED PRIOR TO CONSTRUCTION OF THE NEW RUNWAY, ORIGINAL FOUND MONUMENT WAS A FOUND 3" BRASS CAP IN CONCRETE MARKED "CITY OF ASHLAND, SURVEY MONUMENT", FLUSH IN RUNWAY)
4004	6871.50	6830.73	07/05/11	SET 5/8" X 30" LONG REBAR WITH AN RPC MARKED "OBEC CONTROL", (CONTROL POINT *9)
4005	7053.79	6842.20	07/05/11	SET 1" COPPER PLUG, MARKED "OBEC", FLUSH IN TOP OF CONCRETE
4006	6970.53	6775.43	07/05/11	SET 5/8" X 30" LONG REBAR WITH AN OPC MARKED "OBEC LS 65452"
4007	6987.18	6894.49	07/05/11	SET 1" COPPER PLUG, MARKED "OBEC", FLUSH IN TOP OF CONCRETE

RPC = RED PLASTIC CAP  
 OPC = ORANGE PLASTIC CAP

CONTROL POINT COORDINATE TABLE

PT. ID.	NORTHING	EASTING	DESCRIPTION
1	6996.98	6976.25	FOUND 1/2" REBAR W/ YPC STAMPED "CONTROL", FLUSH WITH GROUND
2	7702.73	6442.96	FOUND 1/2" SMOOTH STEEL ROD, IN MONUMENT CASE, FLUSH, ( FAA 503A)
3	8177.60	6047.25	FOUND 1/2" REBAR W/ YPC STAMPED "CONTROL", FLUSH WITH GROUND
9	6871.50	6830.73	SET 5/8" X 30" LONG REBAR WITH AN RPC MARKED " OBEC CONTROL", FLUSH
10	8295.15	5647.70	SET 5/8" X 30" LONG REBAR WITH AN RPC MARKED " OBEC CONTROL", FLUSH

RPC = RED PLASTIC CAP  
 YPC = YELLOW PLASTIC CAP



REGISTERED  
 PROFESSIONAL  
 LAND SURVEYOR

*[Signature]*

OREGON  
 JULY 12, 2005  
 LOGAN MILES  
 65452  
 RENEWAL: DEC. 31, 2012

BASIS OF BEARINGS:

TRUE MERIDIAN PER SURVEY NUMBER 12088 AT THE MONUMENTED CENTERLINE OF RUNWAY 12-30 OF THE ASHLAND MUNICIPAL AIRPORT

Corporate Office: 920 COUNTRY CLUB ROAD, SUITE 100B EUGENE, OREGON 97401-6089, 541-683-6090  
 2235 MISSION STREET SE, SUITE 100 SALEM, OREGON 97302-1295, 503-589-4100  
 831 OHARE PARKWAY MEDFORD, OREGON 97504-4005, 541-774-5590  
 5005 SW MEADOWS ROAD, SUITE 120 LAKE OSWEGO, OREGON 97035, 503-620-6103

CITY OF ASHLAND

RE-MONUMENTATION SURVEY  
 ASHLAND MUNICIPAL AIRPORT: RUNWAY RE-HAB  
 CITY OF ASHLAND, JACKSON COUNTY, OREGON

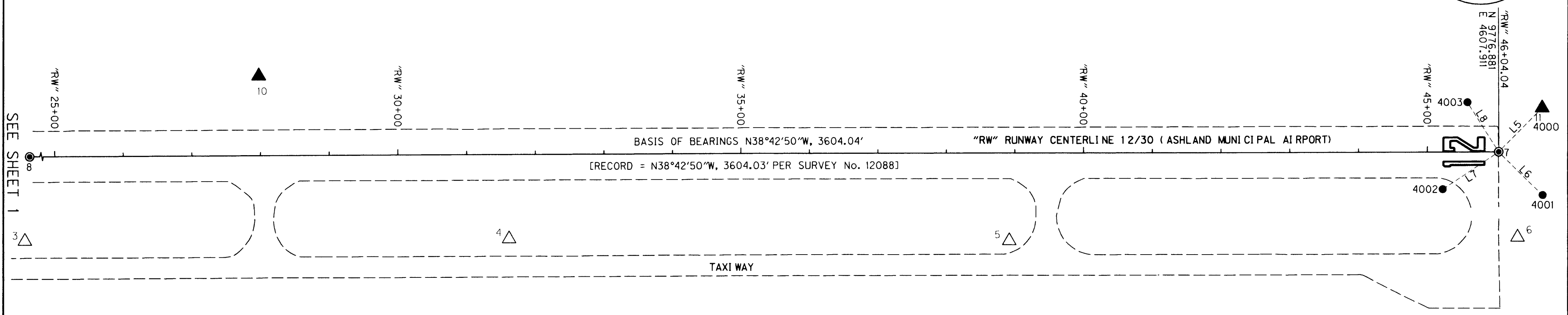
CITY OF ASHLAND  
 20 EAST MAIN STREET  
 ASHLAND, OR. 97520

JULY, 2011  
 1" = 100'  
 SHEET 1 OF 2

J. COLTON	OBEC	DESIGNED: Logan Miles	PROJ. NO. 0524-0011.00
APPROVED BY: SURVEY GROUP MNGR.		DRAWN: Logan Miles	CHK'D: J. COLTON

SW 1/4 SEC 12 T39S R1E WM  
 SE 1/4 SEC 11 T39S R1E WM  
 NE 1/4 SEC 11 T39S R1E WM

**\*\*RECEIVED\*\***  
 DATE 7-15-11 BY *LB*  
 This survey consists of:  
 - 2 - sheet(s) Map  
 - 2 - page(s) Narrative  
 JACKSON COUNTY  
 SURVEYOR



**REFERENCE POINTS LINE TABLE**

LINE NO.	BEARING	DISTANCE
L5	N 83°40'01" W	89.48'
L6	N 06°01'00" E	89.58'
L7	S 72°15'24" E	97.98'
L8	S 18°57'28" W	84.89'

**CONTROL NARRATIVE**

PROJECT: RUNWAY 12-30 REHABILITATION  
 LOCATION: ASHLAND MUNICIPAL AIRPORT, CITY OF ASHLAND  
 COUNTY: JACKSON COUNTY  
 OBEC PROJECT: 0524-0011.00  
 SURVEY DATUM:  
 HORIZONTAL - ASSUMED COORDINATE BASE, PER PROVIDED CONTROL  
 BEARINGS: CENTERLINE OF RUNWAY 12-30 PER SURVEY NUMBER 12088

**RTK (ORGN) GPS CALIBRATION TO PROJECT CONTROL RESIDUALS**

PT ID	HORZ. CALIBRATION RESIDUAL
4	0.011'
5	0.013'
6	0.019'

**PROJECT LEGEND**

- [ ] RECORD DATA PER SURVEY NO. 12088
- △ FOUND CONTROL POINT, NOTED IN TABLE
- ▲ SET CONTROL POINT, NOTED IN TABLE
- SET MONUMENT, NOTED IN TABLE
- SET BRASS CAP, NOTED IN TABLE
- EDGE OF EXISTING PAVEMENT

**HORIZONTAL CONTROL SURVEY**

PROJECT CONTROL VALUES FOR POINTS 1 THROUGH 6 WERE ESTABLISHED BY THE DESIGN SURVEYOR AND PROVIDED TO OBEC BY THE DESIGN ENGINEER FOR USE ON THIS PROJECT. THE CONTROL POINT VALUES WERE HELD AND A CALIBRATION WAS PERFORMED WITH RESIDUALS SHOWN HERE ON. ADDITIONAL CONTROL POINTS 9, 10 AND 11 WERE THEN SET BASED ON THE PROVIDED CONTROL TO SUPPORT THE CONSTRUCTION OF THE PROJECT.

CONTROL POINTS FOR THIS SURVEY WERE NOT SET ON AND DO NOT REPRESENT PROPERTY LINES OR RIGHT-OF-WAY LINES AND ARE INTENDED FOR USE OF THE CITY OF ASHLAND AND OBEC CONSULTING ENGINEERS IN SUPPORT OF FUTURE PROJECTS. IT IS NOT THE INTENT OF THE CITY OF ASHLAND OR OBEC CONSULTING ENGINEERS TO PERPETUATE THESE CONTROL POINTS AS MONUMENTS.

**SET MONUMENTS TABLE**

PT. NO.	NORTHING	EASTING	DATE	DESCRIPTION
7	9776.88	4607.91	07/01/11	SET 3" BRASS CAP OVER 2" IRON PIPE IN CONCRETE, MARKED "CITY OF ASHLAND, SURVEY MARKER", FLUSH WITH TOP OF RUNWAY (MONUMENT SET AT ORIGINAL LOCATION, AS MEASURED PRIOR TO CONSTRUCTION OF THE NEW RUNWAY, ORIGINAL FOUND MONUMENT WAS A FOUND 3" BRASS CAP IN CONCRETE MARKED "CITY OF ASHLAND, SURVEY MONUMENT", FLUSH IN RUNWAY)
4000	9786.75	4518.98	07/01/11	SET 5/8" X 30" LONG REBAR WITH AN RPC MARKED "OBEC CONTROL", (CONTROL POINT #11)
4001	9865.97	4617.30	07/01/11	SET 5/8" X 30" LONG REBAR WITH AN OPC MARKED "OBEC LS 65452"
4002	9747.02	4701.23	07/01/11	SET 1" COPPER PLUG, MARKED "OBEC", FLUSH IN TOP OF CONCRETE
4003	9696.59	4580.33	07/01/11	SET 5/8" X 30" LONG REBAR WITH AN OPC MARKED "OBEC LS 65452"

RPC = RED PLASTIC CAP  
 OPC = ORANGE PLASTIC CAP

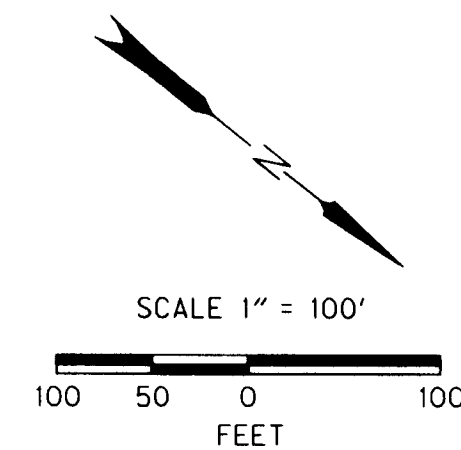
**CONTROL POINT COORDINATE TABLE**

PT. ID.	NORTHING	EASTING	DESCRIPTION
4	8728.06	5606.05	FOUND 1/2" REBAR W/ YPC STAMPED "CONTROL", FLUSH WITH GROUND
5	9300.59	5153.09	FOUND 1/2" SMOOTH STEEL ROD, IN MONUMENT CASE, FLUSH, ( FAA 503B )
6	9875.65	4687.87	FOUND 1/2" REBAR W/ YPC STAMPED "CONTROL", FLUSH WITH GROUND
11	9786.75	4518.98	SET 5/8" X 30" LONG REBAR WITH AN RPC MARKED "OBEC CONTROL", FLUSH

RPC = RED PLASTIC CAP  
 YPC = YELLOW PLASTIC CAP

**BASIS OF BEARINGS:**

TRUE MERIDIAN PER SURVEY NUMBER 12088 AT THE MONUMENTED CENTERLINE OF RUNWAY 12-30 OF THE ASHLAND MUNICIPAL AIRPORT



REGISTERED PROFESSIONAL LAND SURVEYOR

*Logan Miles*  
 OREGON  
 JULY 12, 2005  
 LOGAN MILES  
 65452

RENEWAL: DEC. 31, 2012

OBEC CONSULTING ENGINEERS  
 Corporate Office: 920 COUNTRY CLUB ROAD, SUITE 100B EUGENE, OREGON 97401-6089, 541-683-6090  
 2235 MISSION STREET SE, SUITE 100 SALEM, OREGON 97302-1295, 503-589-4100  
 831 O'HARE PARKWAY WEDFORD, OREGON 97504-4005, 541-774-5590  
 5005 SW MEADOWS ROAD, SUITE 120 LAKE OSWEGO, OREGON 97035, 503-620-6103  
 www.obec.com

CITY OF ASHLAND  
 RE-MONUMENTATION SURVEY  
 ASHLAND MUNICIPAL AIRPORT: RUNWAY RE-HAB  
 CITY OF ASHLAND, JACKSON COUNTY, OREGON

CITY OF ASHLAND  
 20 EAST MAIN STREET  
 ASHLAND, OR. 97520

JULY, 2011  
 1" = 100'  
 SHEET 2 OF 2

DESIGNED: Logan Miles  
 DRAWN: Logan Miles  
 PROJ. NO. 0524-0011.00  
 CHK'D: J. COLTON